

Anti-TCR alpha antibody ab18861

★★★★☆ [4 Abreviews](#) [4 References](#) [1 图像](#)

概述

产品名称	Anti-TCR alpha抗体
描述	兔多克隆抗体to TCR alpha
宿主	Rabbit
经测试应用	适用于: WB
种属反应性	与反应: Human
免疫原	Recombinant full length protein (Human)
常规说明	<p>This product is manufactured by BioVision, an Abcam company and was previously called 5648 TCR alpha Antibody. 5648-100 is the same size as the 100 µg size of ab18861.</p> <p>The Life Science industry has been in the grips of a reproducibility crisis for a number of years. Abcam is leading the way in addressing this with our range of recombinant monoclonal antibodies and knockout edited cell lines for gold-standard validation. Please check that this product meets your needs before purchasing.</p> <p>If you have any questions, special requirements or concerns, please send us an inquiry and/or contact our Support team ahead of purchase. Recommended alternatives for this product can be found below, along with publications, customer reviews and Q&amp;As</p>

性能

形式	Liquid
存放说明	Shipped at 4°C. Upon delivery aliquot and store at -20°C or -80°C. Avoid repeated freeze / thaw cycles.
存储溶液	Preservative: 0.02% Thimerosal (merthiolate) Constituents: PBS, 50% Glycerol (glycerin, glycerine), 1% BSA
纯度	Immunogen affinity purified
克隆	多克隆
同种型	IgG

应用

The Abpromise guarantee [Abpromise™](#) 承诺保证使用ab18861于以下的经测试应用

“应用说明”部分 下显示的仅为推荐的起始稀释度;实际最佳的稀释度/浓度应由使用者检定。

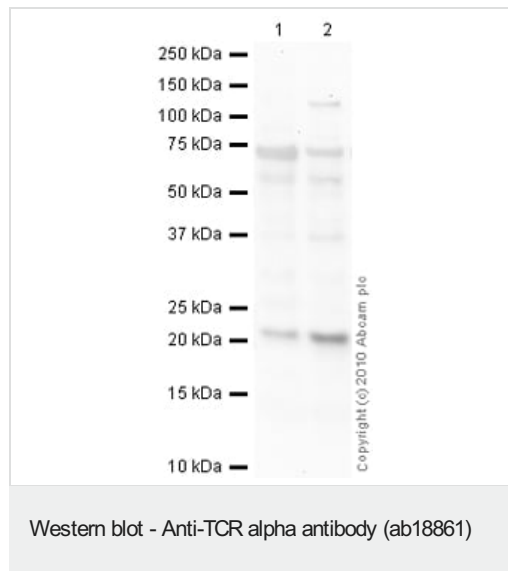
应用	Ab评论	说明
WB	★★★★★ (2)	Use a concentration of 1 - 4 µg/ml. Detects a band of approximately 21 kDa (predicted molecular weight: 16 kDa).

## 靶标

**相关性** TCR (T cell antigen receptor) recognizes foreign antigens and translates such recognition events into intracellular signals that elicit a change in the cell from a dormant to an activated state. TCR is a heterodimer composed of either alpha and beta or gamma and delta chains. CD3 chains and the CD4 or CD8 coreceptors are also required for efficient signal transduction through the TCR.

**细胞定位** Plasma membrane

## 图片



**All lanes :** Anti-TCR alpha antibody (ab18861) at 1 µg/ml

**Lane 1 :** Human thymus tissue lysate - total protein ([ab30146](#))

**Lane 2 :** Human spleen tissue lysate - total protein ([ab29699](#))

Lysates/proteins at 10 µg per lane.

### Secondary

**All lanes :** Goat Anti-Rabbit IgG H&L (HRP) preadsorbed ([ab97080](#)) at 1/5000 dilution

Developed using the ECL technique.

Performed under reducing conditions.

**Predicted band size:** 16 kDa

**Observed band size:** 21 kDa

**Additional bands at:** 56 kDa, 74 kDa. We are unsure as to the identity of these extra bands.

**Exposure time:** 90 seconds

TCR alpha contains a number of potential glycosylation sites (SwissProt) which may explain its migration at a higher molecular weight than predicted.

**Please note:** All products are "FOR RESEARCH USE ONLY. NOT FOR USE IN DIAGNOSTIC PROCEDURES"

### **Our Abpromise to you: Quality guaranteed and expert technical support**

---

- Replacement or refund for products not performing as stated on the datasheet
- Valid for 12 months from date of delivery
- Response to your inquiry within 24 hours
  
- We provide support in Chinese, English, French, German, Japanese and Spanish
- Extensive multi-media technical resources to help you
- We investigate all quality concerns to ensure our products perform to the highest standards

If the product does not perform as described on this datasheet, we will offer a refund or replacement. For full details of the Abpromise, please visit <https://www.abcam.cn/abpromise> or contact our technical team.

### **Terms and conditions**

---

- Guarantee only valid for products bought direct from Abcam or one of our authorized distributors