

Anti-Tcl1 antibody [1-21] ab91211

1 图像

概述	
产品名称	Anti-Tcl1 抗体[1-21]
描述	小鼠单克隆抗体[1-21] to Tcl1
宿主	Mouse
经测试应用	适用于: Flow Cyt
种属反应性	与反应: Human
免疫原	Synthetic peptide (Human)
阳性对照	Daudi cells
常规说明	<p>The Life Science industry has been in the grips of a reproducibility crisis for a number of years. Abcam is leading the way in addressing this with our range of recombinant monoclonal antibodies and knockout edited cell lines for gold-standard validation. Please check that this product meets your needs before purchasing.</p> <p>If you have any questions, special requirements or concerns, please send us an inquiry and/or contact our Support team ahead of purchase. Recommended alternatives for this product can be found below, along with publications, customer reviews and Q&As</p>
性能	
形式	Liquid
存放说明	Shipped at 4°C. Store at +4°C short term (1-2 weeks). Store at -20°C or -80°C. Avoid freeze / thaw cycle.
存储溶液	pH: 7.20 Preservative: 0.09% Sodium azide Constituent: PBS
纯度	Protein A purified
克隆	单克隆
克隆编号	1-21
同种型	IgG2b
轻链类型	kappa

The Abpromise guarantee Abpromise™承诺保证使用ab91211于以下的经测试应用

“应用说明”部分 下显示的仅为推荐的起始稀释度;实际最佳的稀释度/浓度应由使用者检定。

应用	Ab评论	说明
Flow Cyt		

应用说明

Flow Cyt: Use 0.5µg for 10⁶ cells in 100µl volume.
 IHC-P: Use at an assay dependent dilution.
 IP: Use at an assay dependent dilution.
 WB: Use at an assay dependent dilution. Predicted molecular weight: 13 kDa.

Not yet tested in other applications.
 Optimal dilutions/concentrations should be determined by the end user.

靶标

功能

Enhances the phosphorylation and activation of AKT1, AKT2 and AKT3. Promotes nuclear translocation of AKT1. Enhances cell proliferation, stabilizes mitochondrial membrane potential and promotes cell survival.

组织特异性

Restricted in the T-cell lineage to immature thymocytes and activated peripheral lymphocytes. Preferentially expressed early in T- and B-lymphocyte differentiation.

疾病相关

Note=Chromosomal aberrations activating TCL1A are found in chronic T-cell leukemias (T-CLL). Translocation t(14;14)(q11;q32); translocation t(7;14)(q35;q32); inversion inv(14)(q11;q32) that involves the T-cell receptor alpha/delta loci.

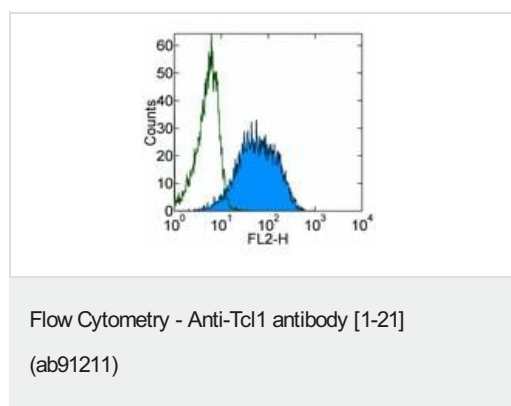
序列相似性

Belongs to the TCL1 family.

细胞定位

Cytoplasm. Nucleus. Microsome. Endoplasmic reticulum. Microsomal fraction.

图片



Staining of Daudi cells with ab91211 at 0.25 µg (blue histogram), or purified Mouse IgG2b, isotype control at 0.25 µg (green histogram), followed by treatment with Biotin anti-Mouse IgG and Phycoerythrin (PE) Streptavidin. Total viable cells were used for analysis.

Please note: All products are "FOR RESEARCH USE ONLY. NOT FOR USE IN DIAGNOSTIC PROCEDURES"

Our Abpromise to you: Quality guaranteed and expert technical support

- Replacement or refund for products not performing as stated on the datasheet
- Valid for 12 months from date of delivery
- Response to your inquiry within 24 hours

- We provide support in Chinese, English, French, German, Japanese and Spanish
- Extensive multi-media technical resources to help you
- We investigate all quality concerns to ensure our products perform to the highest standards

If the product does not perform as described on this datasheet, we will offer a refund or replacement. For full details of the Abpromise, please visit <https://www.abcam.cn/abpromise> or contact our technical team.

Terms and conditions

- Guarantee only valid for products bought direct from Abcam or one of our authorized distributors