



# Anti-TARC/CCL17 antibody ab182793

★★★★★ [9 Abreviews](#) [14 References](#) [3 图像](#)

## 概述

产品名称	Anti-TARC/CCL17抗体
描述	兔多克隆抗体to TARC/CCL17
宿主	Rabbit
经测试应用	适用于: IHC-P, WB
种属反应性	与反应: Mouse, Human
免疫原	Synthetic peptide corresponding to Human TARC/CCL17 aa 50 to the C-terminus. Database link: <a href="#">Q92583</a>
	<div>  <a href="#">Run BLAST with</a>  <a href="#">Run BLAST with</a> </div>
阳性对照	WB: HepG2 cell, 293T cell, Human cerebrum tissue, Mouse kidney tissue lysates; IHC: Human liver cancer tissue.
常规说明	<p>This gene is one of several Cys-Cys (CC) cytokine genes clustered on the q arm of chromosome 16. Cytokines are a family of secreted proteins involved in immunoregulatory and inflammatory processes. The CC cytokines are proteins characterized by two adjacent cysteines. The cytokine encoded by this gene displays chemotactic activity for T lymphocytes, but not monocytes or granulocytes. The product of this gene binds to chemokine receptors CCR4 and CCR8. This chemokine plays important roles in T cell development in thymus as well as in trafficking and activation of mature T cells.</p> <p>The Life Science industry has been in the grips of a reproducibility crisis for a number of years. Abcam is leading the way in addressing this with our range of recombinant monoclonal antibodies and knockout edited cell lines for gold-standard validation. Please check that this product meets your needs before purchasing.</p> <p>If you have any questions, special requirements or concerns, please send us an inquiry and/or contact our Support team ahead of purchase. Recommended alternatives for this product can be found below, along with publications, customer reviews and Q&amp;As</p>

## 性能

形式	Liquid
存放说明	Shipped at 4°C. Store at +4°C short term (1-2 weeks). Upon delivery aliquot. Store at -20°C long term. Avoid freeze / thaw cycle.
存储溶液	pH: 7.4 Preservative: 0.05% Sodium azide

Constituents: 50% Glycerol, 49% PBS

(without Mg<sup>2+</sup> and Ca<sup>2+</sup>)

纯度	Immunogen affinity purified
克隆	多克隆
同种型	IgG

## 应用

### The Abpromise guarantee

**Abpromise™**承诺保证使用ab182793于以下的经测试应用

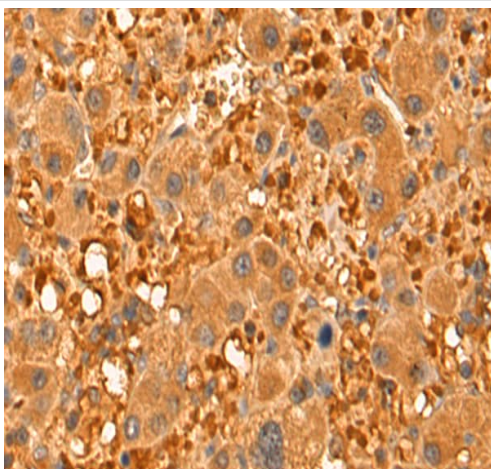
“应用说明”部分 下显示的仅为推荐的起始稀释度;实际最佳的稀释度/浓度应由使用者检定。

应用	Ab评论	说明
IHC-P	★★★★★ (4)	1/50 - 1/200.
WB	★★★★★ (1)	1/500 - 1/2000. Predicted molecular weight: 11 kDa.

## 靶标

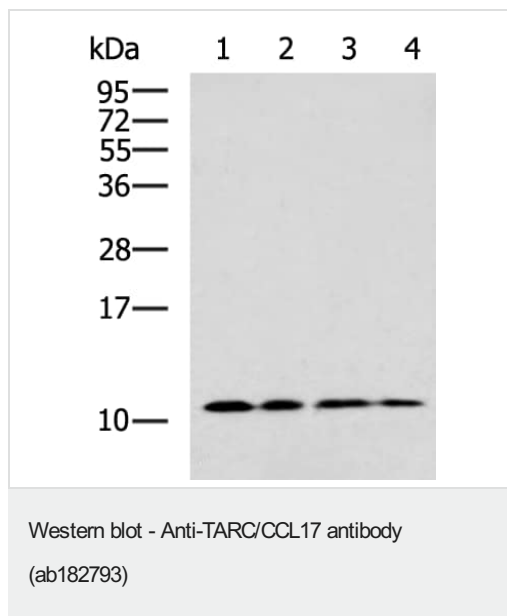
功能	Chemotactic factor for T-lymphocytes but not monocytes or granulocytes. May play a role in T-cell development in thymus and in trafficking and activation of mature T-cells. Binds to CCR4.
组织特异性	Expressed at high levels in thymus and at low levels in the lung, colon and small intestine.
序列相似性	Belongs to the intercrine beta (chemokine CC) family.
细胞定位	Secreted.

## 图片



Immunohistochemical analysis of paraffin embedded Human liver cancer tissue labeling TARC/CCL17 with ab182793 at 1/55.

Immunohistochemistry (Formalin/PFA-fixed paraffin-embedded sections) - Anti-TARC/CCL17 antibody (ab182793)



**All lanes :** Anti-TARC/CCL17 antibody (ab182793)

**Lane 1 :** HepG2 cell lysate

**Lane 2 :** 293T cell lysate

**Lane 3 :** Human cerebrum tissue lysate

**Lane 4 :** Mouse kidney tissue lysate

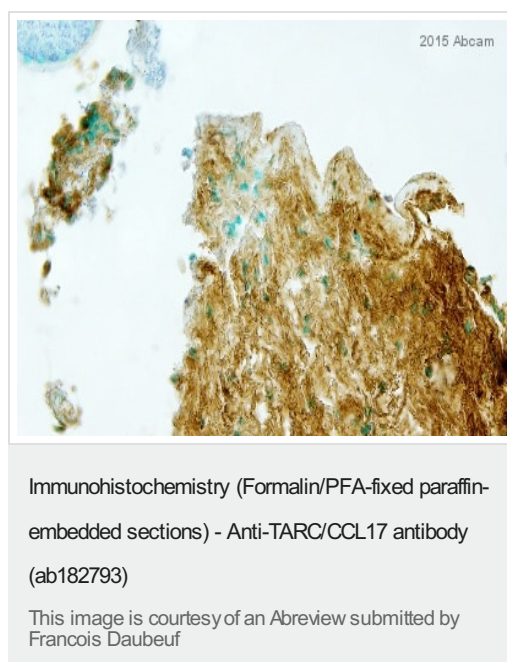
Lysates/proteins at 40 µg per lane.

#### Secondary

**All lanes :** Goat anti rabbit IgG at 1/5000 dilution

**Predicted band size:** 11 kDa

Gel: 12% SDS-PAGE



ab182793 staining TARC/CCL17 in human lung biopsy tissue sections by Immunohistochemistry (IHC-P - paraformaldehyde-fixed, paraffin-embedded sections). Tissue was fixed with paraformaldehyde and antigen retrieval was performed by heat mediation in citrate buffer, pH 6.0. Samples were incubated with primary antibody (1/2000 in PBS + 1% BSA) for 16 hours at 4°C. A Biotin-conjugated donkey anti-rabbit IgG polyclonal (1/500) was used as the secondary antibody.

TARC/CCL17 in connective tissue is revealed in brown (DAB impact). Nucleus (and Mucus) are counterstain in blue (Fastblue).

Fixative: Formalin 4% (Qpath), lungs were post-fixed (6h) before paraffin embedded in a tissue-tek® VIP6 automat.

Sections: 3µm on SuperFrost®.

Antigen retrieval step: Citrate buffer pH=6 (15 min at 95°C) in a water Bath then slide were placed in Sequenza immunostaining with Coverplate (Shandon).

Endogenous enzyme were blocked with Dual Endogenous Enzyme Block (Dako cytomation) 15min.

Extravidin-HRP was used to increase signal (1/500, 20min, RT).

**Please note:** All products are "FOR RESEARCH USE ONLY. NOT FOR USE IN DIAGNOSTIC PROCEDURES"

**Our Abpromise to you: Quality guaranteed and expert technical support**

- Replacement or refund for products not performing as stated on the datasheet
- Valid for 12 months from date of delivery
- Response to your inquiry within 24 hours
- We provide support in Chinese, English, French, German, Japanese and Spanish
- Extensive multi-media technical resources to help you
- We investigate all quality concerns to ensure our products perform to the highest standards

If the product does not perform as described on this datasheet, we will offer a refund or replacement. For full details of the Abpromise, please visit <https://www.abcam.cn/abpromise> or contact our technical team.

#### **Terms and conditions**

---

- Guarantee only valid for products bought direct from Abcam or one of our authorized distributors