

Anti-Talin 1 and 2 antibody [8D4] ab11188

★★★★★ [4 Abreviews](#) [16 References](#) [2 图像](#)

概述

产品名称	Anti-Talin 1 and 2抗体[8D4]
描述	小鼠单克隆抗体[8D4] to Talin 1 and 2
宿主	Mouse
经测试应用	适用于: IP, Flow Cyt, ICC/IF, WB
种属反应性	与反应: Rat, Chicken, Human, Xenopus laevis, Chinese hamster 不与反应: Fish
免疫原	Full length native protein (purified) corresponding to Chicken Talin 1 and 2.
阳性对照	WB: CHO cells ICC/IF: Chicken UMNSAH/DF1 cells
常规说明	<p>This product was changed from ascites to tissue culture supernatant on 25th October 2016. The following lot(s) is/are from ascites and is still in stock as of 25th October 2016- GR228677. Lot numbers higher than GR228677 will be from tissue culture supernatant. Please note that the dilutions may need to be adjusted accordingly.</p> <p>For continuous use, store at 2-8 °C for up to one month. If slight turbidity occurs upon prolonged storage, clarify the solution by centrifugation before use.</p> <p>The Life Science industry has been in the grips of a reproducibility crisis for a number of years. Abcam is leading the way in addressing this with our range of recombinant monoclonal antibodies and knockout edited cell lines for gold-standard validation. Please check that this product meets your needs before purchasing.</p> <p>If you have any questions, special requirements or concerns, please send us an inquiry and/or contact our Support team ahead of purchase. Recommended alternatives for this product can be found below, along with publications, customer reviews and Q&As</p>

性能

形式	Liquid
存放说明	Shipped at 4°C. Store at +4°C short term (1-2 weeks). Upon delivery aliquot. Store at -20°C or -80°C. Avoid freeze / thaw cycle.
存储溶液	pH: 7.40 Preservative: 0.097% Sodium azide Constituent: PBS
纯度	Proprietary Purification

纯化说明	Purified from Tissue culture supernatant.
克隆	单克隆
克隆编号	8D4
同种型	IgG1

应用

The Abpromise guarantee **Abpromise™**承诺保证使用ab11188于以下的经测试应用

“应用说明”部分 下显示的仅为推荐的起始稀释度;实际最佳的稀释度/浓度应由使用者检定。

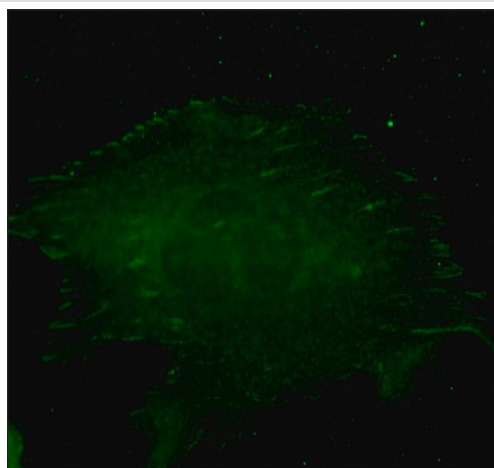
应用	Ab评论	说明
IP		Use at an assay dependent concentration.
Flow Cyt	★★★★★ (1)	Use at an assay dependent concentration. See Abreview. ab170190 - Mouse monoclonal IgG1, is suitable for use as an isotype control with this antibody.
ICC/IF	★★★★★ (1)	Use at an assay dependent concentration. See Abreview.
WB	★★★★★ (2)	Use at an assay dependent concentration. Predicted molecular weight: 270 kDa.

靶标

相关性	<p>Talin, a multifunctional constituent of cell-substratum attachment sites, is a high molecular weight protein (225-235 kDa) found in variety of tissues and cell types. It is localized at a subset of adherens junctions, specialized cell-cell and cell-matrix associations that are characterized by the presence of filamentous actin at the cytoplasmic face of the junctional complex. In cultured cells, talin is absent from cell-cell junctions and found predominantly at adhesion plaques and in fibrillar streaks underlying cell surface fibronectin. Talin interacts with at least two other proteins that are localized at adhesion plaques, vinculin and integrin. Talin and vinculin have been shown to interact with each other and both have been proposed to be involved in generating the transmembrane connection, between the extracellular matrix and the cytoskeleton, that occurs at adhesion plaques. At physiological ionic strength, talin is an elongate, flexible, monomeric protein with the ability to self-associate into dimers at higher protein concentrations. Talin 2 is related to talin 1. This protein has a different pattern of expression compared to talin 1 but, like talin 1, is thought to associate with unique transmembrane receptors to form novel linkages between extracellular matrices and the actin cytoskeleton.</p>
-----	---

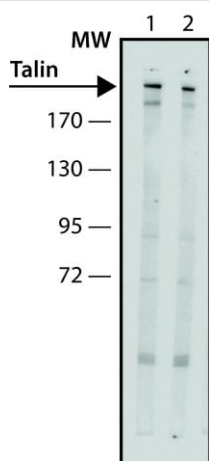
细胞定位	Cell projection, ruffle membrane (talin 1), Focal adhesion plaques and synapses (talin 2)
------	---

图片



Immunocytochemistry/ Immunofluorescence - Anti-Talin 1 and 2 antibody [8D4] (ab11188)

Immunocytochemistry analysis of Chicken UMNSAH/DF1 cells labeling Talin 1 and 2 with ab11188 at 5 µg/mL. Cells were fixed and permeabilized with methanol followed by acetone. The antibody was developed using Goat Anti-Mouse IgG Atto-488 conjugate.



Western blot - Anti-Talin 1 and 2 antibody [8D4] (ab11188)

Lane 1 : Anti-Talin 1 and 2 antibody [8D4] (ab11188) at 2 µg/ml

Lane 2 : Anti-Talin 1 and 2 antibody [8D4] (ab11188) at 1 mg/ml

All lanes : Whole extract of CHO cells

Secondary

All lanes : Goat Anti-Mouse IgG-Peroxidase

Predicted band size: 270 kDa

chemiluminescent substrate.

Please note: All products are "FOR RESEARCH USE ONLY. NOT FOR USE IN DIAGNOSTIC PROCEDURES"

Our Abpromise to you: Quality guaranteed and expert technical support

- Replacement or refund for products not performing as stated on the datasheet
- Valid for 12 months from date of delivery
- Response to your inquiry within 24 hours
- We provide support in Chinese, English, French, German, Japanese and Spanish
- Extensive multi-media technical resources to help you
- We investigate all quality concerns to ensure our products perform to the highest standards

If the product does not perform as described on this datasheet, we will offer a refund or replacement. For full details of the Abpromise, please visit <https://www.abcam.cn/abpromise> or contact our technical team.

Terms and conditions

- Guarantee only valid for products bought direct from Abcam or one of our authorized distributors