

Anti-T-bet / Tbx21 antibody [BLR110H] ab275959

重组

6 图像

概述

产品名称	Anti-T-bet / Tbx21抗体[BLR110H]
描述	兔单克隆抗体[BLR110H] to T-bet / Tbx21
宿主	Rabbit
经测试应用	适用于: WB, IP, ICC, IHC-P
种属反应性	与反应: Human
免疫原	Synthetic peptide within Human T-bet/ Tbx21 aa 485-535 (C terminal). The exact sequence is proprietary. NP_037483.1 Database link: Q9UL17
阳性对照	WB: MJ/G11 and NK-92 whole cell lysates. IP: MJ/G11 cells. IHC-P: Hodgkin's lymphoma, seminoma tissue. ICC: MJ cells.
常规说明	This product is sold under License from Bethyl Laboratories, Inc.

性能

形式	Liquid
存放说明	Shipped at 4°C. Store at +4°C short term (1-2 weeks). Upon delivery aliquot. Store at -20°C. Avoid freeze / thaw cycle.
存储溶液	pH: 8.20 Preservative: 0.09% Sodium azide Constituent: 99% Borate buffered saline
纯度	Immunogen affinity purified
克隆	单克隆
克隆编号	BLR110H
同种型	IgG

应用

The Abpromise guarantee

Abpromise™ 承诺保证使用ab275959于以下的经测试应用

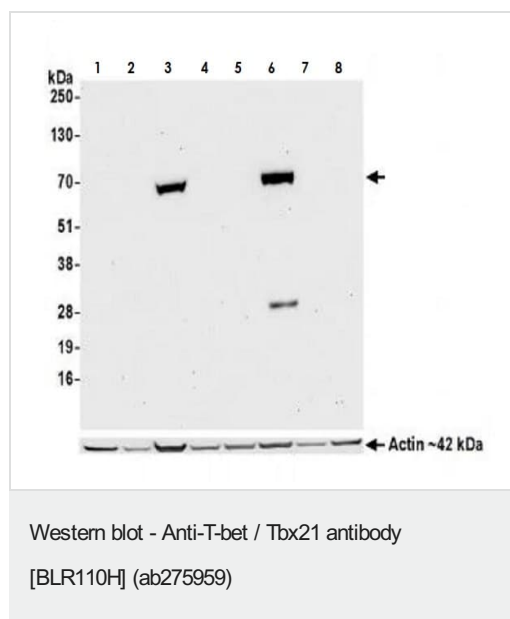
“应用说明”部分 下显示的仅为推荐的起始稀释度;实际最佳的稀释度/浓度应由使用者检定。

应用	Ab评论	说明
WB		1/1000. Predicted molecular weight: 58 kDa.
IP		Use at an assay dependent concentration. 6 µl/mg lysate
ICC		1/100 - 1/500. Epitope retrieval with citrate buffer pH6.0 is recommended for FFPE cell sections
IHC-P		1/100 - 1/500. Perform heat mediated antigen retrieval with citrate buffer pH 6 before commencing with IHC staining protocol.

靶标

功能	Transcription factor that controls the expression of the TH1 cytokine, interferon-gamma. Initiates TH1 lineage development from naive TH precursor cells both by activating TH1 genetic programs and by repressing the opposing TH2 programs.
组织特异性	T-cell specific.
疾病相关	Genetic variations in TBX21 are associated with susceptibility to asthma with nasal polyps and aspirin intolerance (ANPAI) [MIM:208550]. A condition consisting of asthma, aspirin sensitivity and nasal polyposis. Nasal polyposis is due to chronic inflammation of the paranasal sinus mucosa, leading to protrusion of edematous polyps into the nasal cavities.
序列相似性	Contains 1 T-box DNA-binding domain.
细胞定位	Nucleus.

图片



All lanes : Anti-Tbet / Tbx21 antibody [BLR110H] (ab275959) at 1/1000 dilution

Lane 1 : MCF7 (Human breast adenocarcinoma cell line) whole cell lysate

Lane 2 : HEK-293T (Human epithelial cell line from embryonic kidney transformed with large T antigen) whole cell lysate

Lane 3 : MJ/G11 (Human T lymphocyte cell line) whole cell lysate

Lane 4 : HeLa (Human epithelial cell line from cervix adenocarcinoma) whole cell lysate

Lane 5 : Jurkat (Human T cell leukemia cell line from peripheral blood) whole cell lysate

Lane 6 : NK-92 (Human peripheral blood malignant non-Hodgkin's lymphoma cell line) whole cell lysate

Lane 7 : HepG2 (Human liver hepatocellular carcinoma cell line)

whole cell lysate

Lane 8 : U-2 OS (Human bone osteosarcoma epithelial cell line)

whole cell lysate

Lysates/proteins at 50 µg per lane.

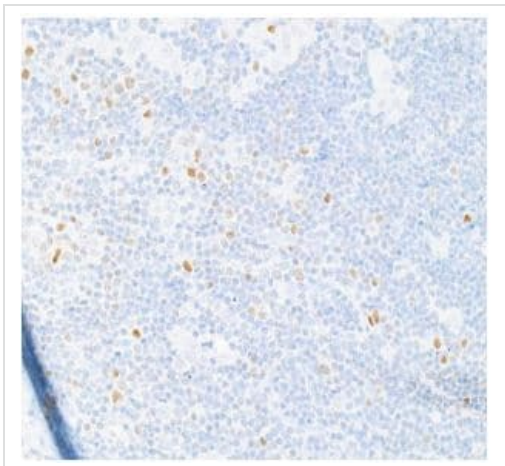
Secondary

All lanes : HRP conjugated goat anti-rabbit IgG

Predicted band size: 58 kDa

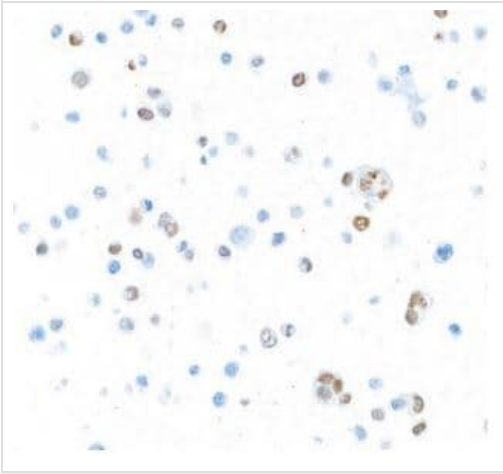
Chemiluminescence with an exposure time of 30 seconds.

Lower Panel: Rabbit anti-Actin recombinant monoclonal.



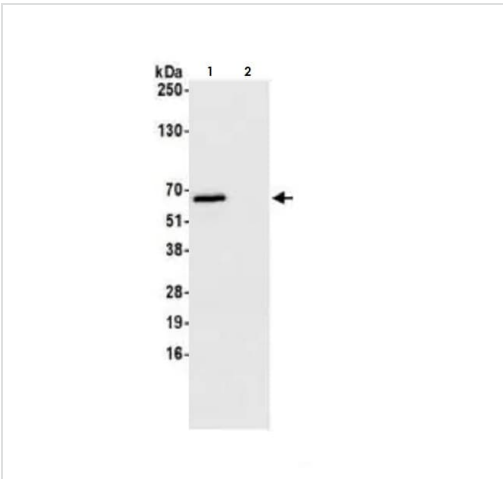
Paraffin embedded Hodgkin's lymphoma tissue stained for T-bet / Tbx21 using ab275959 at 1/500 dilution in immunohistochemical analysis. Secondary antibody HRP-conjugated goat anti-rabbit IgG was used. DAB substrate.

Immunohistochemistry (Formalin/PFA-fixed paraffin-embedded sections) - Anti-T-bet / Tbx21 antibody [BLR110H] - BSA free (ab275959)



Immunocytochemistry - Anti-T-bet / Tbx21 antibody
[BLR110H] - BSA free (ab275959)

MJ (Primary cutaneous T-cell non-Hodgkin lymphoma) cells stained for T-bet / Tbx21 using ab275959 at 1/500 dilution in ICC. Secondary antibody HRP-conjugated goat anti-rabbit IgG was used. DAB substrate.



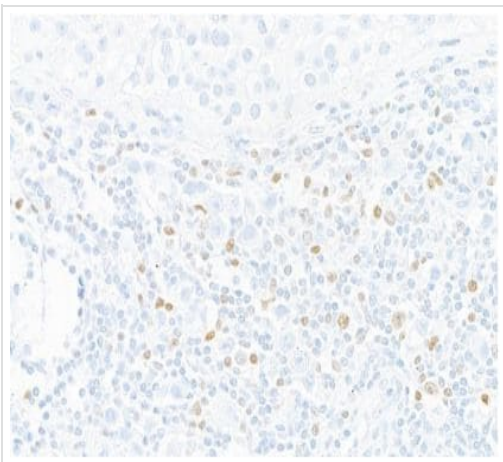
Immunoprecipitation - Anti-T-bet / Tbx21 antibody
[BLR110H] (ab275959)

Whole cell lysate (1.0 mg per IP reaction; 20% of IP loaded) from MJ/G11 cells prepared using NETN lysis buffer. ab275959 was used for immunoprecipitation at 6 μ l per reaction. For blotting ab275959 was used at 1/1000 dilution.

Lane 1: ab275959.

Lane 2: Control IgG.

Chemiluminescence with an exposure time of 3 seconds.



Immunohistochemistry (Formalin/PFA-fixed paraffin-embedded sections) - Anti-T-bet / Tbx21 antibody
[BLR110H] - BSA free (ab275959)

Paraffin embedded seminoma tissue stained for T-bet / Tbx21 using ab275959 at 1/500 dilution in immunohistochemical analysis. Secondary antibody HRP-conjugated goat anti-rabbit IgG was used. DAB substrate.

Why choose a recombinant antibody?



Research with confidence
Consistent and reproducible results



Long-term and scalable supply
Recombinant technology



Success from the first experiment
Confirmed specificity



Ethical standards compliant
Animal-free production

Anti-T-bet / Tbx21 antibody [BLR110H] (ab275959)

Please note: All products are "FOR RESEARCH USE ONLY. NOT FOR USE IN DIAGNOSTIC PROCEDURES"

Our Abpromise to you: Quality guaranteed and expert technical support

- Replacement or refund for products not performing as stated on the datasheet
- Valid for 12 months from date of delivery
- Response to your inquiry within 24 hours
- We provide support in Chinese, English, French, German, Japanese and Spanish
- Extensive multi-media technical resources to help you
- We investigate all quality concerns to ensure our products perform to the highest standards

If the product does not perform as described on this datasheet, we will offer a refund or replacement. For full details of the Abpromise, please visit <https://www.abcam.cn/abpromise> or contact our technical team.

Terms and conditions

- Guarantee only valid for products bought direct from Abcam or one of our authorized distributors