

# Anti-Syntaxin 1a (phospho S14) antibody ab63571

**5 References**   [1 图像](#)

### 概述

产品名称	Anti-Syntaxin 1a (phospho S14)抗体
描述	兔多克隆抗体to Syntaxin 1a (phospho S14)
宿主	Rabbit
经测试应用	适用于: WB
种属反应性	与反应: Mouse
免疫原	Synthetic peptide corresponding to Human Syntaxin 1a (phospho S14). Database link: <a href="#">Q16623</a>
常规说明	<p>The Life Science industry has been in the grips of a reproducibility crisis for a number of years. Abcam is leading the way in addressing this with our range of recombinant monoclonal antibodies and knockout edited cell lines for gold-standard validation. Please check that this product meets your needs before purchasing.</p> <p>If you have any questions, special requirements or concerns, please send us an inquiry and/or contact our Support team ahead of purchase. Recommended alternatives for this product can be found below, along with publications, customer reviews and Q&amp;As</p>

### 性能

形式	Liquid
存放说明	Shipped at 4°C. Store at -20°C. Stable for 12 months at -20°C.
存储溶液	pH: 7.40 Preservative: 0.02% Sodium azide Constituents: PBS, 50% Glycerol (glycerin, glycerine), 0.87% Sodium chloride
纯度	Immunogen affinity purified
纯化说明	Purified from rabbit antiserum by affinity chromatography using epitope specific phosphopeptide. The antibody against non-phosphopeptide was removed by chromatography using non-phosphopeptide corresponding to the phosphorylation site.
克隆	多克隆
同种型	IgG

### 应用

## The Abpromise guarantee

**Abpromise™** 承诺保证使用ab63571于以下的经测试应用

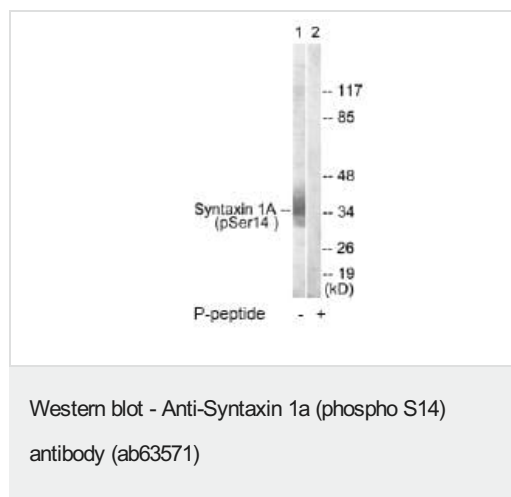
“应用说明”部分 下显示的仅为推荐的起始稀释度;实际最佳的稀释度/浓度应由使用者检定。

应用	Ab评论	说明
WB		1/500 - 1/1000. Detects a band of approximately 33 kDa (predicted molecular weight: 33 kDa).

## 靶标

功能	Potentially involved in docking of synaptic vesicles at presynaptic active zones. May play a critical role in neurotransmitter exocytosis. May mediate Ca(2+)-regulation of exocytosis acrossomal reaction in sperm.
组织特异性	Isoform 1 is highly expressed in embryonic spinal chord and ganglia and in adult cerebellum and cerebral cortex. Isoform 2 is expressed in heart, liver, fat, skeletal muscle, kidney and brain.
疾病相关	Note=STX1A is located in the Williams-Beuren syndrome (WBS) critical region. WBS results from a hemizygous deletion of several genes on chromosome 7q11.23, thought to arise as a consequence of unequal crossing over between highly homologous low-copy repeat sequences flanking the deleted region.
序列相似性	Belongs to the syntaxin family. Contains 1 t-SNARE coiled-coil homology domain.
细胞定位	Secreted and Cytoplasmic vesicle > secretory vesicle > synaptic vesicle membrane. Cell junction > synapse > synaptosome.

## 图片



**All lanes :** Anti-Syntaxin 1a (phospho S14) antibody (ab63571) at 1/500 dilution

**Lane 1 :** Extracts from mouse brain cells (5-30µg)

**Lane 2 :** Extracts from mouse brain cells (5-30µg), with immunizing phosphopeptide (5-10µg)

**Predicted band size:** 33 kDa

**Observed band size:** 33 kDa

**Please note:** All products are "FOR RESEARCH USE ONLY. NOT FOR USE IN DIAGNOSTIC PROCEDURES"

## Our Abpromise to you: Quality guaranteed and expert technical support

- Replacement or refund for products not performing as stated on the datasheet

- Valid for 12 months from date of delivery
- Response to your inquiry within 24 hours
- We provide support in Chinese, English, French, German, Japanese and Spanish
- Extensive multi-media technical resources to help you
- We investigate all quality concerns to ensure our products perform to the highest standards

If the product does not perform as described on this datasheet, we will offer a refund or replacement. For full details of the Abpromise, please visit <https://www.abcam.cn/abpromise> or contact our technical team.

#### **Terms and conditions**

---

- Guarantee only valid for products bought direct from Abcam or one of our authorized distributors