

Anti-Synaptophysin antibody [YE269] - Mouse IgG1 (Chimeric) ab309493

敲除验证 重组

10 图像

概述

产品名称	Anti-Synaptophysin抗体[YE269]-小鼠IgG1 (Chimeric)
描述	小鼠单克隆抗体[YE269] to Synaptophysin - Chimeric
宿主	Mouse
经测试应用	适用于: ICC/IF, WB, IHC-P 不适用于: IHC-Fr
种属反应性	与反应: Mouse, Rat, Human
免疫原	Synthetic peptide. This information is proprietary to Abcam and/or its suppliers.
阳性对照	WB: Mouse brain, cerebellum and hippocampus tissue lysate. Rat brain and cerebellum tissue lysate. Human cerebellum tissue lysate. Wild-type 293T whole lysate. IHC-P: Human pancreas tissue. Mouse and rat cerebrum tissue. ICC/IF: Mouse and rat primary neurons.
常规说明	<p>This mouse monoclonal chimeric antibody has been engineered from a RabMAb parent antibody (ab32127). By design, some rabbit sequence is retained as part of the variable domain. When multiplexing with other rabbit-derived antibodies, using cross absorbed FC-reactive secondary antibodies are recommended.</p> <p>This antibody clone is manufactured by Abcam. If you require a custom buffer formulation or conjugation for your experiments, please contact orders@abcam.com.</p> <p>This product is a recombinant monoclonal antibody, which offers several advantages including:</p> <ul style="list-style-type: none">- High batch-to-batch consistency and reproducibility- Improved sensitivity and specificity- Long-term security of supply- Animal-free production <p>For more information see here.</p>

性能

形式	Liquid
存放说明	Shipped at 4°C. Store at +4°C short term (1-2 weeks). Upon delivery aliquot. Store at -20°C long term. Avoid freeze / thaw cycle.

存储溶液	pH: 7.20 Preservative: 0.01% Sodium azide Constituents: 40% Glycerol (glycerin, glycerine), 0.05% BSA, 59% PBS
纯度	Protein A purified
克隆	单克隆
克隆编号	YE269
同种型	IgG1

应用

The Abpromise guarantee **Abpromise™** 承诺保证使用 ab309493 于以下的经测试应用

“应用说明”部分 下显示的仅为推荐的起始稀释度;实际最佳的稀释度/浓度应由使用者检定。

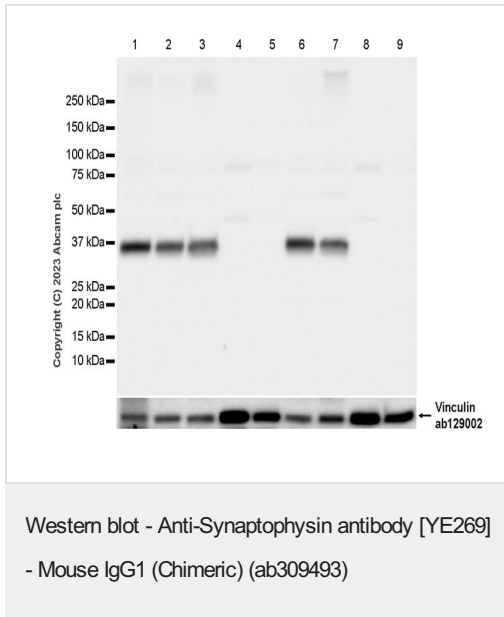
应用	Ab评论	说明
ICC/IF		1/100.
WB		1/5000. Predicted molecular weight: 33 kDa.
IHC-P		1/20000.

应用说明 Is unsuitable for IHC-Fr.

靶标

功能	Possibly involved in structural functions as organizing other membrane components or in targeting the vesicles to the plasma membrane. Involved in the regulation of short-term and long-term synaptic plasticity.
组织特异性	Characteristic of a type of small (30-80 nm) neurosecretory vesicles, including presynaptic vesicles, but also vesicles of various neuroendocrine cells of both neuronal and epithelial phenotype.
疾病相关	Mental retardation, X-linked, SYP-related
序列相似性	Belongs to the synaptophysin/synaptobrevin family. Contains 1 MARVEL domain.
结构域	The calcium-binding activity is thought to be localized in the cytoplasmic tail of the protein.
翻译后修饰	Ubiquitinated; mediated by SIAH1 or SIAH2 and leading to its subsequent proteasomal degradation.
细胞定位	Cytoplasmic vesicle, secretory vesicle, synaptic vesicle membrane. Cell junction, synapse, synaptosome.

图片



All lanes : Anti-Synaptophysin antibody [YE269] - Mouse IgG1 (Chimeric) (ab309493) at 1/5000 dilution

- Lane 1** : Mouse brain tissue lysate
- Lane 2** : Mouse cerebellum tissue lysate
- Lane 3** : Mouse hippocampus tissue lysate
- Lane 4** : Mouse heart tissue lysate
- Lane 5** : Mouse kidney tissue lysate
- Lane 6** : Rat brain tissue lysate
- Lane 7** : Rat cerebellum tissue lysate
- Lane 8** : Rat heart tissue lysate
- Lane 9** : Rat kidney tissue lysate

Lysates/proteins at 20 µg per lane.

Secondary

All lanes : Goat Anti-Mouse IgG Fc (HRP) preadsorbed ([ab98717](#)) at 1/20000 dilution

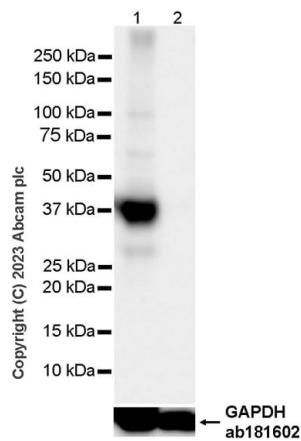
Predicted band size: 33 kDa
Observed band size: 38 kDa

Blocking and diluting buffer and concentration: 5% NFDm/TBST.

Low expression tissues: Kidney and heart (PMID:11604140).

In Western blot, anti- Vinculin antibody ([ab129002](#)) loading control staining at 1/10000 dilution.

Exposure time: 1 second.



Western blot - Anti-Synaptophysin antibody [YE269]
- Mouse IgG1 (Chimeric) (ab309493)

All lanes : Anti-Synaptophysin antibody [YE269] - Mouse IgG1
(Chimeric) (ab309493) at 1/5000 dilution

Lane 1 : Human cerebellum tissue lysate 10 µg

Lane 2 : Human kidney tissue lysate 20 µg

Secondary

All lanes : Goat Anti-Mouse IgG Fc (HRP) preadsorbed ([ab98717](#))
at 1/20000 dilution

Predicted band size: 33 kDa

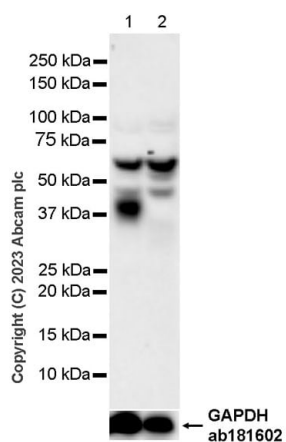
Observed band size: 38 kDa

Blocking and diluting buffer and concentration: 5% NFDm/TBST.

Low expression tissue: Kidney (PMID:11604140).

In Western blot, anti-GAPDH antibody ([ab181602](#)) loading control
staining at 1/200000 dilution.

Exposure time: 8 seconds.



Western blot - Anti-Synaptophysin antibody [YE269]
- Mouse IgG1 (Chimeric) (ab309493)

All lanes : Anti-Synaptophysin antibody [YE269] - Mouse IgG1
(Chimeric) (ab309493) at 1/5000 dilution

Lane 1 : Wild-type 293T (human embryonic kidney epithelial cell)
whole cell lysate 20 µg

Lane 2 : SYP knockout 293T whole cell lysate 20 µg

Secondary

All lanes : Goat Anti-Mouse IgG Fc (HRP) preadsorbed ([ab98717](#))
at 1/20000 dilution

Predicted band size: 33 kDa

Observed band size: 38 kDa

Blocking and diluting buffer and concentration: 5% NFDm/TBST.

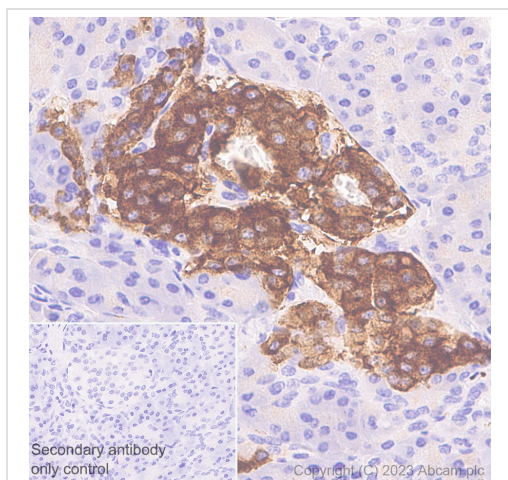
Performed under reducing conditions.

In Western blot, ab309493 was shown to bind specifically to
Synaptophysin (SYP). Target of interest was observed at 38 kDa
wild-type 293T cell lysates (lane 1) with no signal observed at this
size in SYP knockout cell line (lane 2, knockout cell line [ab267272](#) /

knockout cell lysate **ab257060**).

In Western blot, anti-GAPDH antibody (**ab181602**) loading control staining at 1/200000 dilution.

Exposure time: 59 seconds.



Immunohistochemistry (Formalin/PFA-fixed paraffin-embedded sections) - Anti-Synaptophysin antibody [YE269] - Mouse IgG1 (Chimeric) (ab309493)

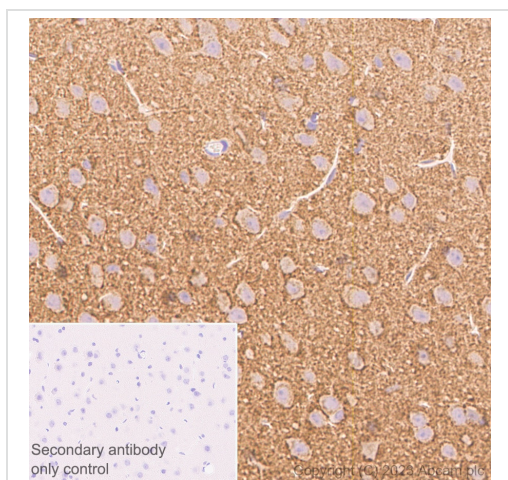
Immunohistochemical analysis of paraffin-embedded human pancreas tissue labeling Synaptophysin with ab309493 at 1/20000 (0.047 ug/ml) followed by a ready to use LeicaDS9800 (Bond™ Polymer Refine Detection).

Positive staining on the islet in human pancreas.

The section was incubated with ab309493 for 30 mins at room temperature, followed by anti-mouse IgG1 antibody (**ab125913**) for 8 mins during the LeicaDS9800 kit staining procedure. The immunostaining was performed on a Leica Biosystems BOND® RX instrument. Counterstained with Hematoxylin.

Secondary antibody only control: Secondary antibody is a ready to use LeicaDS9800 (Bond™ Polymer Refine Detection).

Heat mediated antigen retrieval was performed with Tris-EDTA buffer (pH 9.0, Epitope Retrieval Solution2) for 20 mins.



Immunohistochemistry (Formalin/PFA-fixed paraffin-embedded sections) - Anti-Synaptophysin antibody [YE269] - Mouse IgG1 (Chimeric) (ab309493)

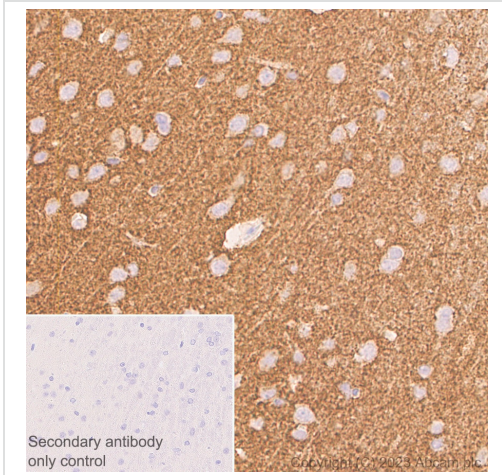
Immunohistochemical analysis of paraffin-embedded mouse cerebrum tissue labeling Synaptophysin with ab309493 at 1/20000 (0.047 ug/ml) followed by a ready to use LeicaDS9800 (Bond™ Polymer Refine Detection).

Positive staining on mouse cerebrum.

The section was incubated with ab309493 for 30 mins at room temperature, followed by anti-mouse IgG1 antibody (**ab125913**) for 8 mins during the LeicaDS9800 kit staining procedure. The immunostaining was performed on a Leica Biosystems BOND® RX instrument. Counterstained with Hematoxylin.

Secondary antibody only control: Secondary antibody is a ready to use LeicaDS9800 (Bond™ Polymer Refine Detection).

Heat mediated antigen retrieval was performed with Tris-EDTA buffer (pH 9.0, Epitope Retrieval Solution2) for 20 mins.



Immunohistochemistry (Formalin/PFA-fixed paraffin-embedded sections) - Anti-Synaptophysin antibody [YE269] - Mouse IgG1 (Chimeric) (ab309493)

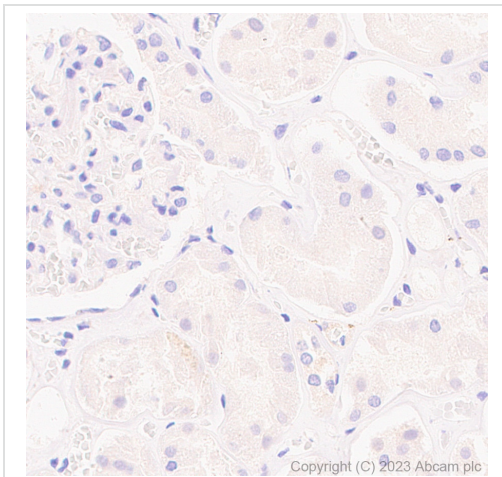
Immunohistochemical analysis of paraffin-embedded rat cerebrum tissue labeling Synaptophysin with ab309493 at 1/20000 (0.047 ug/ml) followed by a ready to use LeicaDS9800 (Bond™ Polymer Refine Detection).

Positive staining on rat cerebrum.

The section was incubated with ab309493 for 30 mins at room temperature, followed by anti-mouse IgG1 antibody (**ab125913**) for 8 mins during the LeicaDS9800 kit staining procedure. The immunostaining was performed on a Leica Biosystems BOND® RX instrument. Counterstained with Hematoxylin.

Secondary antibody only control: Secondary antibody is a ready to use LeicaDS9800 (Bond™ Polymer Refine Detection).

Heat mediated antigen retrieval was performed with Tris-EDTA buffer (pH 9.0, Epitope Retrieval Solution2) for 20 mins.



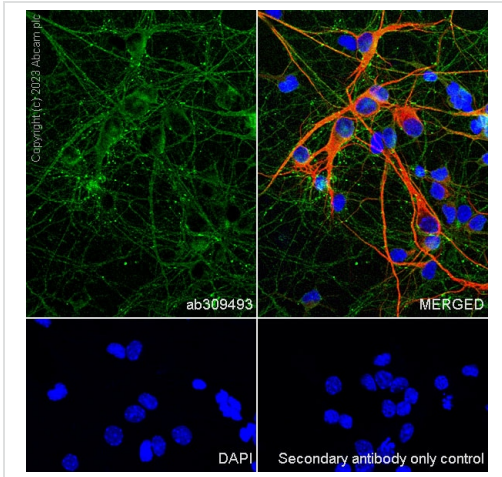
Immunohistochemistry (Formalin/PFA-fixed paraffin-embedded sections) - Anti-Synaptophysin antibody [YE269] - Mouse IgG1 (Chimeric) (ab309493)

Immunohistochemical analysis of paraffin-embedded human kidney tissue labeling Synaptophysin with ab309493 at 1/20000 (0.047 ug/ml) followed by a ready to use LeicaDS9800 (Bond™ Polymer Refine Detection).

Low expression tissue: almost no staining on human kidney.

The section was incubated with ab309493 for 30 mins at room temperature, followed by anti-mouse IgG1 antibody (**ab125913**) for 8 mins during the LeicaDS9800 kit staining procedure. The immunostaining was performed on a Leica Biosystems BOND® RX instrument. Counterstained with Hematoxylin.

Heat mediated antigen retrieval was performed with Tris-EDTA buffer (pH 9.0, Epitope Retrieval Solution2) for 20 mins.



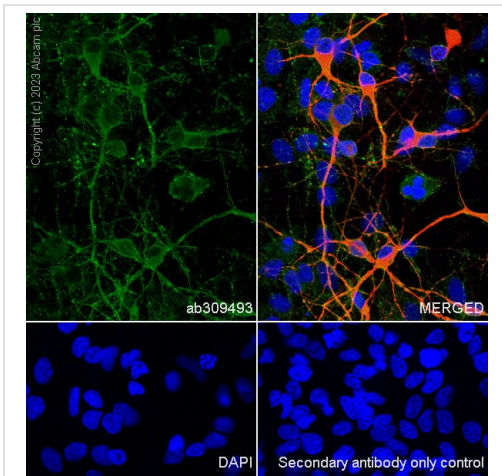
Immunocytochemistry/ Immunofluorescence - Anti-Synaptophysin antibody [YE269] - Mouse IgG1 (Chimeric) (ab309493)

Immunofluorescent analysis of 4% Paraformaldehyde-fixed, 0.1% TritonX-100 permeabilized mouse primary neurons labelling Synaptophysin with ab309493 at 1/100 dilution, followed by **ab150113** Goat Anti-Mouse IgG H&L (Alexa Fluor® 488) antibody at 1/1000 dilution (Green).

Confocal image showing cytoplasmic staining in mouse primary neuron cell line.

Confocal scanning Z step was set as 0.3 μ M followed by image processing with maximum Z projection. Image was taken with a confocal microscope (Leica-Microsystems, TCS SP8). iab183830 Anti-MAP2 rabbit monoclonal antibody was used to counterstain tubulin at 1/1000 dilution, followed by **ab150080** Goat Anti-Rabbit IgG H&L (Alexa Fluor® 594) at a 1/500 dilution (Red). The nuclear counterstain was DAPI (Blue).

Secondary antibody only control: Secondary antibody is **ab150113** Goat Anti-Mouse IgG H&L (Alexa Fluor® 488) at 1/1000 dilution.



Immunocytochemistry/ Immunofluorescence - Anti-Synaptophysin antibody [YE269] - Mouse IgG1 (Chimeric) (ab309493)

Immunofluorescent analysis of 4% Paraformaldehyde-fixed, 0.1% TritonX-100 permeabilized rat primary neurons labelling Synaptophysin with ab309493 at 1/100 dilution, followed by **ab150113** Goat Anti-Mouse IgG H&L (Alexa Fluor® 488) antibody at 1/1000 dilution (Green).

Confocal image showing cytoplasmic staining in rat primary neuron cell line.

Confocal scanning Z step was set as 0.3 μ M followed by image processing with maximum Z projection. Image was taken with a confocal microscope (Leica-Microsystems, TCS SP8). iab183830 Anti-MAP2 rabbit monoclonal antibody was used to counterstain tubulin at 1/1000 dilution, followed by **ab150080** Goat Anti-Rabbit IgG H&L (Alexa Fluor® 594) at a 1/500 dilution (Red). The nuclear counterstain was DAPI (Blue).

Secondary antibody only control: Secondary antibody is **ab150113** Goat Anti-Mouse IgG H&L (Alexa Fluor® 488) at 1/1000 dilution.

Why choose a recombinant antibody?



Research with confidence
Consistent and reproducible results



Long-term and scalable supply
Recombinant technology



Success from the first experiment
Confirmed specificity



Ethical standards compliant
Animal-free production

Anti-Synaptophysin antibody [YE269] - Mouse IgG1
(Chimeric) (ab309493)

Please note: All products are "FOR RESEARCH USE ONLY. NOT FOR USE IN DIAGNOSTIC PROCEDURES"

Our Abpromise to you: Quality guaranteed and expert technical support

- Replacement or refund for products not performing as stated on the datasheet
- Valid for 12 months from date of delivery
- Response to your inquiry within 24 hours
- We provide support in Chinese, English, French, German, Japanese and Spanish
- Extensive multi-media technical resources to help you
- We investigate all quality concerns to ensure our products perform to the highest standards

If the product does not perform as described on this datasheet, we will offer a refund or replacement. For full details of the Abpromise, please visit <https://www.abcam.cn/abpromise> or contact our technical team.

Terms and conditions

- Guarantee only valid for products bought direct from Abcam or one of our authorized distributors