

Anti-Synaptophysin antibody [SY38] ab8049

★★★★★ [15 Abreviews](#) [199 References](#) [5 图像](#)

概述

产品名称	Anti-Synaptophysin抗体[SY38]
描述	小鼠单克隆抗体[SY38] to Synaptophysin
宿主	Mouse
经测试应用	适用于: WB, ICC/IF, IHC-Fr, Flow Cyt, IHC-P
种属反应性	与反应: Mouse, Rat, Hamster, Cow, Human
免疫原	Full length native protein (purified) corresponding to Bovine Synaptophysin. Synaptophysin from presynaptic vesicles, prepared from bovine brain. Database link: P20488
阳性对照	Adrenal pheochromocytoma and pancreatic islet cell neoplasm
常规说明	<p>The Life Science industry has been in the grips of a reproducibility crisis for a number of years. Abcam is leading the way in addressing this with our range of recombinant monoclonal antibodies and knockout edited cell lines for gold-standard validation. Please check that this product meets your needs before purchasing.</p> <p>If you have any questions, special requirements or concerns, please send us an inquiry and/or contact our Support team ahead of purchase. Recommended alternatives for this product can be found below, along with publications, customer reviews and Q&As</p>

性能

形式	Liquid
存放说明	Shipped at 4°C. Store at +4°C short term (1-2 weeks). Upon delivery aliquot. Store at +4°C.
存储溶液	pH: 7.3 Preservative: 0.09% Sodium azide Constituents: 0.5% BSA, PBS
纯度	Protein A purified
克隆	单克隆
克隆编号	SY38
同种型	IgG1

应用

The Abpromise guarantee **Abpromise™**承诺保证使用ab8049于以下的经测试应用

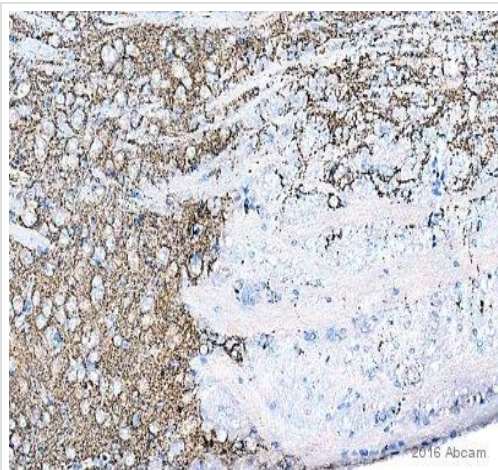
“应用说明”部分 下显示的仅为推荐的起始稀释度;实际最佳的稀释度/浓度应由使用者检定。

应用	Ab评论	说明
WB	★★★★★ (2)	1/500. Detects a band of approximately 38 kDa (predicted molecular weight: 34 kDa).
ICC/IF	★★★★★ (2)	Use at an assay dependent concentration.
IHC-Fr	★★★★★ (1)	Use at an assay dependent concentration.
Flow Cyt	★★★★★ (1)	1/20. ab170190 - Mouse monoclonal IgG1, is suitable for use as an isotype control with this antibody.
IHC-P	★★★★★ (6)	Use at an assay dependent concentration.

靶标

功能	Possibly involved in structural functions as organizing other membrane components or in targeting the vesicles to the plasma membrane. Involved in the regulation of short-term and long-term synaptic plasticity.
组织特异性	Characteristic of a type of small (30-80 nm) neurosecretory vesicles, including presynaptic vesicles, but also vesicles of various neuroendocrine cells of both neuronal and epithelial phenotype.
疾病相关	Mental retardation, X-linked, SYP-related
序列相似性	Belongs to the synaptophysin/synaptobrevin family. Contains 1 MARVEL domain.
结构域	The calcium-binding activity is thought to be localized in the cytoplasmic tail of the protein.
翻译后修饰	Ubiquitinated; mediated by SIAH1 or SIAH2 and leading to its subsequent proteasomal degradation.
细胞定位	Cytoplasmic vesicle, secretory vesicle, synaptic vesicle membrane. Cell junction, synapse, synaptosome.

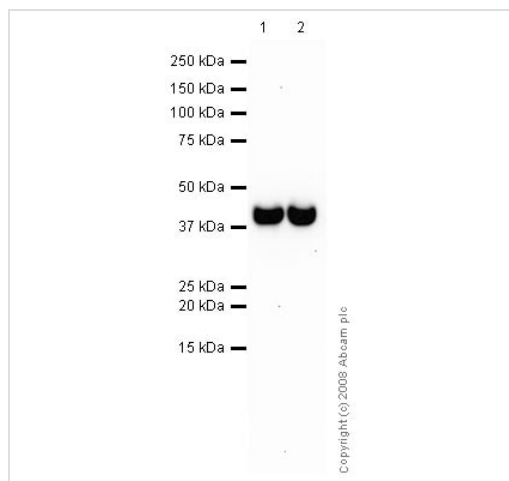
图片



Immunohistochemistry (Formalin/PFA-fixed paraffin-embedded sections) - Anti-Synaptophysin antibody [SY38] (ab8049)

This image is courtesy of an Abreview provided by Carl Hobbs

ab8049 staining Synaptophysin in Mouse brain tissue sections by Immunohistochemistry (IHC-P - paraformaldehyde-fixed, paraffin-embedded sections). Tissue was fixed with formaldehyde and blocked with 2% BSA for 10 minutes at 21°C; antigen retrieval was by heat mediation in a citric acid. Samples were incubated with primary antibody (1/100) for 16 hours at 21°C. A Biotin-conjugated Goat anti-mouse IgG polyclonal (1/300) was used as the secondary antibody.



Western blot - Anti-Synaptophysin antibody [SY38] (ab8049)

All lanes : Anti-Synaptophysin antibody [SY38] (ab8049) at 1/500 dilution

Lane 1 : Human brain tissue lysate - total protein ([ab29466](#))

Lane 2 : Brain (Mouse) Tissue Lysate

Lysates/proteins at 10 µg per lane.

Secondary

All lanes : Goat polyclonal to Mouse IgG - H&L - Pre-Adsorbed at 1/3000 dilution

Predicted band size: 34 kDa

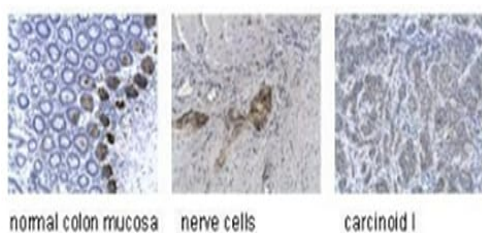
Observed band size: 38 kDa



Immunohistochemistry (Formalin/PFA-fixed paraffin-embedded sections) - Anti-Synaptophysin antibody [SY38] (ab8049)

This image is courtesy of an Abreview provided by Carl Hobbs.

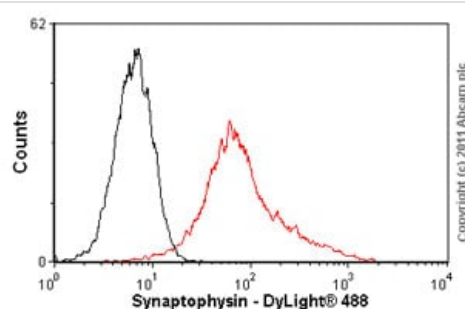
ab8049 staining MAFA in human colon tissue sections by Immunohistochemistry (IHC-P - paraformaldehyde-fixed, paraffin-embedded sections). Tissue was fixed with formaldehyde and blocked with 1% BSA for 10 minutes at 21°C; antigen retrieval was by heat mediation in citric acid. Samples were incubated with primary antibody (1/100 in TBS/BSA/azide) for 16 hours at 21°C. A Biotin-conjugated goat anti-mouse IgG polyclonal (1/300) was used as the secondary antibody.



Immunohistochemistry (Formalin/PFA-fixed paraffin-embedded sections) - Anti-Synaptophysin antibody [SY38] (ab8049)

The pictures show immunohistochemical staining of normal mucosa and neuroendocrine tumour of the small intestine. The antibody (ab8049) stains positive in a 1:10 dilution in nerve cells of the colon as well as some cells in normal colon mucosa and some neuroendocrine tumors of the digestive tract. Staining protocol: Mouse monoclonal to Synaptophysin (ab8049), diluted 1:10 in PBS plus BSA, 60 min at room temperature, secondary antibody: HRP solution with anti mouse polyclonal antibodies, 30min. DAB staining 10 min; Hematoxylin 30 sec.

These images were kindly supplied as part of the review submitted by Karin Birkenkamp-Demtroeder.



Flow Cytometry - Anti-Synaptophysin antibody [SY38] (ab8049)

Overlay histogram showing PC12 cells stained with ab8049 (red line). The cells were fixed with methanol (5 min) and then permeabilized with 0.1% PBS-Tween for 20 min. The cells were then incubated in 1x PBS / 10% normal goat serum / 0.3M glycine to block non-specific protein-protein interactions followed by the antibody (ab8049, 1/20 dilution) for 30 min at 22°C. The secondary antibody used was DyLight® 488 goat anti-mouse IgG (H+L) (**ab96879**) at 1/500 dilution for 30 min at 22°C. Isotype control antibody (black line) was mouse IgG1 [ICIGG1] (**ab91353**, 2µg/1x10⁶ cells) used under the same conditions. Acquisition of >5,000 events was performed. This antibody gave a decreased

signal in PC12 cells fixed with 4% paraformaldehyde (10 min)/permeabilized with 0.1% PBS-Tween used under the same conditions.

Please note: All products are "FOR RESEARCH USE ONLY. NOT FOR USE IN DIAGNOSTIC PROCEDURES"

Our Abpromise to you: Quality guaranteed and expert technical support

- Replacement or refund for products not performing as stated on the datasheet
- Valid for 12 months from date of delivery
- Response to your inquiry within 24 hours
- We provide support in Chinese, English, French, German, Japanese and Spanish
- Extensive multi-media technical resources to help you
- We investigate all quality concerns to ensure our products perform to the highest standards

If the product does not perform as described on this datasheet, we will offer a refund or replacement. For full details of the Abpromise, please visit <https://www.abcam.cn/abpromise> or contact our technical team.

Terms and conditions

- Guarantee only valid for products bought direct from Abcam or one of our authorized distributors