


Anti-Synaptogyrin 3 antibody ab113712

2 图像

概述

产品名称	Anti-Synaptogyrin 3抗体
描述	兔多克隆抗体to Synaptogyrin 3
宿主	Rabbit
经测试应用	适用于: WB, IHC-P
种属反应性	与反应: Mouse, Human 预测可用于: Rat 
免疫原	Synthetic peptide from within C terminal region of Human Synaptogyrin 3, conjugated to KLH.
阳性对照	Human Placenta tissue. Mouse brain tissue lysate.
常规说明	<p>The Life Science industry has been in the grips of a reproducibility crisis for a number of years. Abcam is leading the way in addressing this with our range of recombinant monoclonal antibodies and knockout edited cell lines for gold-standard validation. Please check that this product meets your needs before purchasing.</p> <p>If you have any questions, special requirements or concerns, please send us an inquiry and/or contact our Support team ahead of purchase. Recommended alternatives for this product can be found below, along with publications, customer reviews and Q&As</p>

性能

形式	Liquid
存放说明	Shipped at 4°C. Store at +4°C short term (1-2 weeks). Store at -20°C or -80°C. Avoid freeze / thaw cycle.
存储溶液	pH: 7.4 Preservative: 0.02% Sodium azide Constituent: 99% PBS
纯度	Immunogen affinity purified
克隆	多克隆
同种型	IgG

应用

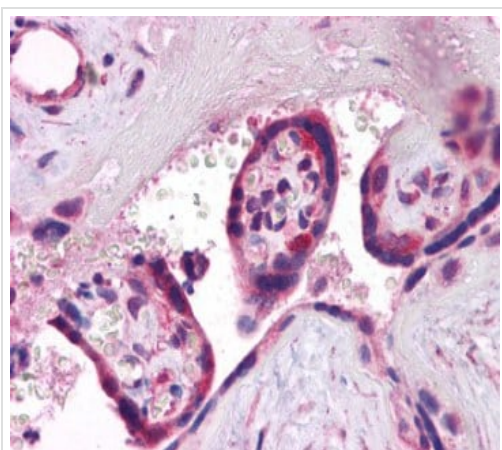
The Abpromise guarantee**Abpromise™**承诺保证使用ab113712于以下的经测试应用

“应用说明”部分 下显示的仅为推荐的起始稀释度;实际最佳的稀释度/浓度应由使用者检定。

应用	Ab评论	说明
WB		Use a concentration of 1 - 2 µg/ml. Predicted molecular weight: 25 kDa.
IHC-P		Use a concentration of 5 µg/ml. Perform heat mediated antigen retrieval with citrate buffer pH 6 before commencing with IHC staining protocol.

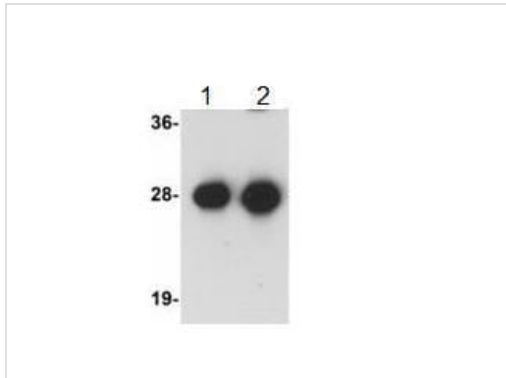
靶标

功能	Involved in the positive regulation of dopamine transporter activity. Probably facilitates the physical and functional interactions of the transporter with the dopamine vesicular storage system, allowing a more efficient loading of the vesicles with extracellular dopamine after release.
组织特异性	Expressed in brain and placenta.
序列相似性	Belongs to the synaptogyrin family. Contains 1 MARVEL domain.
细胞定位	Membrane. Cytoplasmic vesicle > secretory vesicle > synaptic vesicle. Cell junction > synapse. Found at the neuromuscular synapses.

图片

ab113712 at 5 µg/ml staining Synaptogyrin 3 in Formalin-Fixed, Paraffin-Embedded Human Placenta tissue by Immunohistochemistry.

Immunohistochemistry (Formalin/PFA-fixed paraffin-embedded sections) - Anti-Synaptogyrin 3 antibody (ab113712)



Western blot - Anti-Synaptogyrin 3 antibody
(ab113712)

Lane 1 : Anti-Synaptogyrin 3 antibody (ab113712) at 1 μ g/ml

Lane 2 : Anti-Synaptogyrin 3 antibody (ab113712) at 2 μ g/ml

All lanes : Mouse brain tissue lysate

Predicted band size: 25 kDa

Please note: All products are "FOR RESEARCH USE ONLY. NOT FOR USE IN DIAGNOSTIC PROCEDURES"

Our Abpromise to you: Quality guaranteed and expert technical support

- Replacement or refund for products not performing as stated on the datasheet
- Valid for 12 months from date of delivery
- Response to your inquiry within 24 hours

- We provide support in Chinese, English, French, German, Japanese and Spanish
- Extensive multi-media technical resources to help you
- We investigate all quality concerns to ensure our products perform to the highest standards

If the product does not perform as described on this datasheet, we will offer a refund or replacement. For full details of the Abpromise, please visit <https://www.abcam.cn/abpromise> or contact our technical team.

Terms and conditions

- Guarantee only valid for products bought direct from Abcam or one of our authorized distributors