

Anti-SVEP1 antibody ab121677

[1 Abreviews](#) [2 图像](#)

概述

产品名称	Anti-SVEP1抗体
描述	兔多克隆抗体to SVEP1
宿主	Rabbit
经测试应用	适用于: IHC-P
种属反应性	与反应: Human
免疫原	antigen sequence: GDFICTPDNT GVNCTLTCL EGYDFTEGSTD KYCAYEDGV WKPTYTTEWP DCAKKRFANH GFKSFEMFYK AARCDDTDL M KKFSEAFETT LG, corresponding to internal sequence amino acids 736-827 of Human SVEP1. Run BLAST with Expasy Run BLAST with NCBI
阳性对照	IHC-P: Human Fallopian tube and lung tissue
常规说明	<p>The Life Science industry has been in the grips of a reproducibility crisis for a number of years. Abcam is leading the way in addressing this with our range of recombinant monoclonal antibodies and knockout edited cell lines for gold-standard validation. Please check that this product meets your needs before purchasing.</p> <p>If you have any questions, special requirements or concerns, please send us an inquiry and/or contact our Support team ahead of purchase. Recommended alternatives for this product can be found below, along with publications, customer reviews and Q&As</p>

性能

形式	Liquid
存放说明	Shipped at 4°C. Upon delivery aliquot and store at -20°C. Avoid freeze / thaw cycles.
存储溶液	pH: 7.20 Preservative: 0.02% Sodium azide Constituents: 59% PBS, 40% Glycerol (glycerin, glycerine)
纯度	Immunogen affinity purified
克隆	多克隆
同种型	IgG

应用

The Abpromise guarantee

Abpromise™ 承诺保证使用 ab121677 于以下的经测试应用

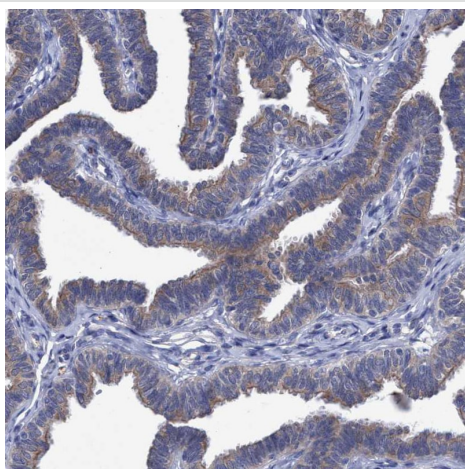
“应用说明”部分下显示的仅为推荐的起始稀释度；实际最佳的稀释度/浓度应由使用者检定。

应用	Ab评论	说明
IHC-P		1/200 - 1/500. Perform heat mediated antigen retrieval with citrate buffer pH 6 before commencing with IHC staining protocol.

靶标

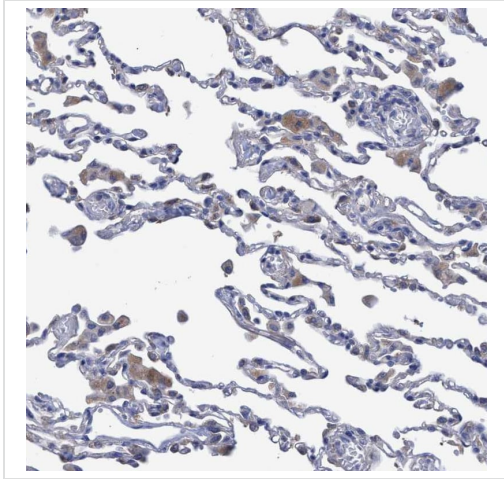
功能	May play a role in the cell attachment process.
组织特异性	Present in mesenchymal primary cultured cell lysates (at protein level). Highly expressed in placenta. Also expressed in marrow stromal cell. Weakly or not expressed in other tissues.
序列相似性	Contains 9 EGF-like domains. Contains 2 HYR domains. Contains 1 pentaxin domain. Contains 34 Sushi (CCP/SCR) domains. Contains 1 VWFA domain.
细胞定位	Secreted. Cytoplasm. Membrane.

图片



Immunohistochemical analysis of human Fallopian tube labeling SVEP1 with ab121677 at 1/200 dilution. Antigen retrieval was heat mediated with citrate buffer pH 6 before commencing with IHC staining protocol.

Immunohistochemistry (Formalin/PFA-fixed paraffin-embedded sections) - Anti-SVEP1 antibody (ab121677)



Immunohistochemical analysis of human lung labeling SVEP1 with ab121677 at 1/200 dilution. Antigen retrieval was heat mediated with citrate buffer pH 6 before commencing with IHC staining protocol.

Immunohistochemistry (Formalin/PFA-fixed paraffin-embedded sections) - Anti-SVEP1 antibody (ab121677)

Please note: All products are "FOR RESEARCH USE ONLY. NOT FOR USE IN DIAGNOSTIC PROCEDURES"

Our Abpromise to you: Quality guaranteed and expert technical support

- Replacement or refund for products not performing as stated on the datasheet
- Valid for 12 months from date of delivery
- Response to your inquiry within 24 hours
- We provide support in Chinese, English, French, German, Japanese and Spanish
- Extensive multi-media technical resources to help you
- We investigate all quality concerns to ensure our products perform to the highest standards

If the product does not perform as described on this datasheet, we will offer a refund or replacement. For full details of the Abpromise, please visit <https://www.abcam.cn/abpromise> or contact our technical team.

Terms and conditions

- Guarantee only valid for products bought direct from Abcam or one of our authorized distributors