


# Anti-SUV3L1 antibody ab176854

[1 References](#) [2 图像](#)

### 概述

产品名称	Anti-SUV3L1抗体
描述	兔多克隆抗体to SUV3L1
宿主	Rabbit
经测试应用	适用于: IP, WB
种属反应性	与反应: Human 预测可用于: Chimpanzee, Cynomolgus monkey, Rhesus monkey, Gorilla, Orangutan 
免疫原	Synthetic peptide within Human SUV3L1 aa 736-786 (C terminal). The exact sequence is proprietary. NP_003162.2 Sequence: RLVQQ GLLTPDMLKQ LEKEWMTQQT EHNKEKTESG THPKGTRRKK KEPDSD  Database link: <a href="#">Q8IYB8</a>  <a href="#">Run BLAST with</a>  <a href="#">Run BLAST with</a>
阳性对照	HeLa and 293T whole cell lysates.
常规说明	<p>The Life Science industry has been in the grips of a reproducibility crisis for a number of years. Abcam is leading the way in addressing this with our range of recombinant monoclonal antibodies and knockout edited cell lines for gold-standard validation. Please check that this product meets your needs before purchasing.</p> <p>If you have any questions, special requirements or concerns, please send us an inquiry and/or contact our Support team ahead of purchase. Recommended alternatives for this product can be found below, along with publications, customer reviews and Q&amp;As</p>

### 性能

形式	Liquid
存放说明	Shipped at 4°C. Store at +4°C short term (1-2 weeks). Upon delivery aliquot. Store at -20°C long term. Avoid freeze / thaw cycle.
存储溶液	pH: 6.8 Preservative: 0.09% Sodium azide Constituents: 99% Tris buffered saline, 0.1% BSA

纯度	Immunogen affinity purified
纯化说明	ab176854 was affinity purified using an epitope specific to SUV3L1 immobilized on solid support.
克隆	多克隆
同种型	IgG

## 应用

**The Abpromise guarantee**      **Abpromise™**承诺保证使用ab176854于以下的经测试应用

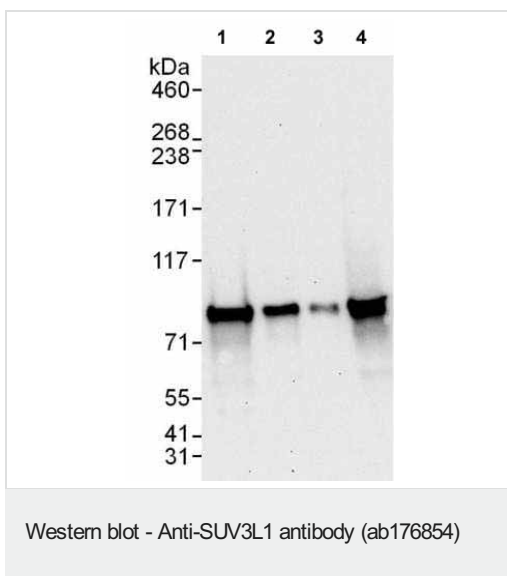
“应用说明”部分 下显示的仅为推荐的起始稀释度;实际最佳的稀释度/浓度应由使用者检定。

应用	Ab评论	说明
IP		Use at 2-5 µg/mg of lysate.
WB		1/2000 - 1/10000. Predicted molecular weight: 88 kDa.

## 靶标

功能	Major helicase player in mitochondrial RNA metabolism. Component of the mitochondrial degradosome (mtEXO) complex, that degrades 3' overhang double-stranded RNA with a 3'-to-5' directionality in an ATP-dependent manner. ATPase and ATP-dependent multisubstrate helicase, able to unwind double-stranded (ds) DNA and RNA, and RNA/DNA heteroduplexes in the 5'-to-3' direction. Plays a role in the RNA surveillance system in mitochondria; regulates the stability of mature mRNAs, the removal of aberrantly formed mRNAs and the rapid degradation of non coding processing intermediates. Also implicated in recombination and chromatin maintenance pathways. May protect cells from apoptosis. Associates with mitochondrial DNA.
组织特异性	Broadly expressed.
序列相似性	Belongs to the helicase family. Contains 1 helicase ATP-binding domain. Contains 1 helicase C-terminal domain.
细胞定位	Nucleus. Mitochondrion matrix. Mitochondrion matrix > mitochondrion nucleoid.

## 图片



**All lanes :** Anti-SUV3L1 antibody (ab176854) at 0.04 µg/ml

**Lane 1 :** HeLa whole cell lysate at 50 µg

**Lane 2 :** HeLa whole cell lysate at 15 µg

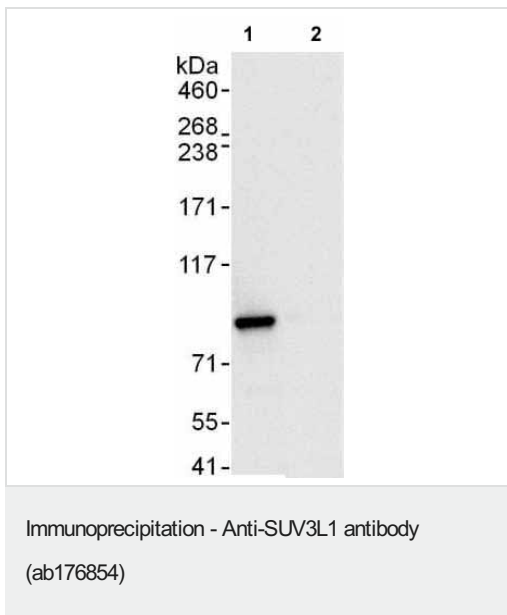
**Lane 3 :** HeLa whole cell lysate at 5 µg

**Lane 4 :** 293T whole cell lysate at 50 µg

Developed using the ECL technique.

**Predicted band size:** 88 kDa

**Exposure time:** 30 seconds



Detection of SUV3L1 in Immunoprecipitates of HeLa whole cell lysates (1 mg for IP, 20% of IP loaded) using ab176854 at 6 µg/mg lysate for IP (Lane 1). For WB detection, ab176854 was used at 1 µg/ml. Lane 2 represents control IgG IP. Detection: Chemiluminescence with an exposure time of 1 second.

**Please note:** All products are "FOR RESEARCH USE ONLY. NOT FOR USE IN DIAGNOSTIC PROCEDURES"

**Our Abpromise to you: Quality guaranteed and expert technical support**

- Replacement or refund for products not performing as stated on the datasheet

- Valid for 12 months from date of delivery
- Response to your inquiry within 24 hours
  
- We provide support in Chinese, English, French, German, Japanese and Spanish
- Extensive multi-media technical resources to help you
- We investigate all quality concerns to ensure our products perform to the highest standards

If the product does not perform as described on this datasheet, we will offer a refund or replacement. For full details of the Abpromise, please visit <https://www.abcam.cn/abpromise> or contact our technical team.

### **Terms and conditions**

---

- Guarantee only valid for products bought direct from Abcam or one of our authorized distributors