


Anti-STRAD antibody ab230118

[1 References](#) [3 图像](#)

概述

产品名称	Anti-STRAD抗体
描述	兔多克隆抗体to STRAD
宿主	Rabbit
经测试应用	适用于: IHC-P, WB
种属反应性	与反应: Rat, Human 预测可用于: Mouse, Chicken, Cow, Macaque monkey, Orangutan 
免疫原	Recombinant fragment corresponding to Human STRAD aa 1-250. Database link: Q7RTN6 Run BLAST with Run BLAST with
阳性对照	WB: Rat heart tissue lysate. IHC-P: Human brain and kidney tissue.
常规说明	<p>The Life Science industry has been in the grips of a reproducibility crisis for a number of years. Abcam is leading the way in addressing this with our range of recombinant monoclonal antibodies and knockout edited cell lines for gold-standard validation. Please check that this product meets your needs before purchasing.</p> <p>If you have any questions, special requirements or concerns, please send us an inquiry and/or contact our Support team ahead of purchase. Recommended alternatives for this product can be found below, along with publications, customer reviews and Q&As</p>

性能

存放说明	Shipped at 4°C. Store at +4°C short term (1-2 weeks). Upon delivery aliquot. Store at -20°C long term. Avoid freeze / thaw cycle.
存储溶液	pH: 7.30 Preservative: 0.02% Sodium azide Constituents: PBS, 50% Glycerol (glycerin, glycerine)
纯度	Immunogen affinity purified
克隆	多克隆
同种型	IgG

应用

The Abpromise guarantee

Abpromise™ 承诺保证使用ab230118于以下的经测试应用

“应用说明”部分 下显示的仅为推荐的起始稀释度;实际最佳的稀释度/浓度应由使用者检定。

应用	Ab评论	说明
IHC-P		1/20 - 1/200.
WB		1/1000 - 1/5000. Predicted molecular weight: 48 kDa.

靶标

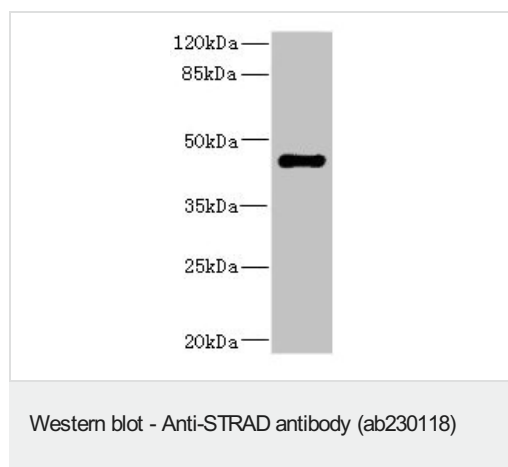
相关性

Members of the STE-20 like kinase family are known to stimulate MAPK pathways by directly activating MAPKKK. LYK5 is a novel pseudokinase member of this family consisting of a STE-20 like kinase domain but lacks several residues that are required for its catalytic activity. It specifically binds LKB1 and plays a key role in regulating the tumor suppressor activities of LKB1. It functions as an upstream activator of LKB1 and also directs the sub-cellular localization of LKB1 by anchoring it in the cytoplasm. LYK5-LKB1 interaction results in phosphorylation of LYK5 and enhanced autophosphorylation of LKB1.

细胞定位

Cytoplasmic and Nuclear

图片



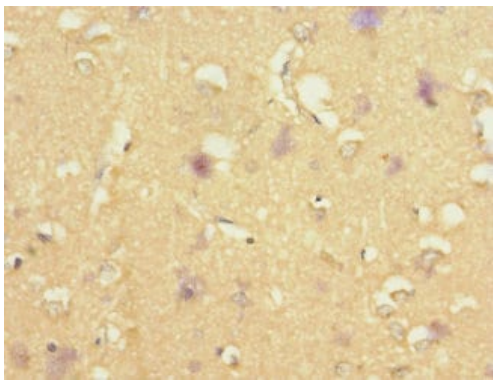
Anti-STRAD antibody (ab230118) at 1/1000 dilution + Rat heart tissue lysate

Secondary

Goat anti-rabbit IgG at 1/10000 dilution

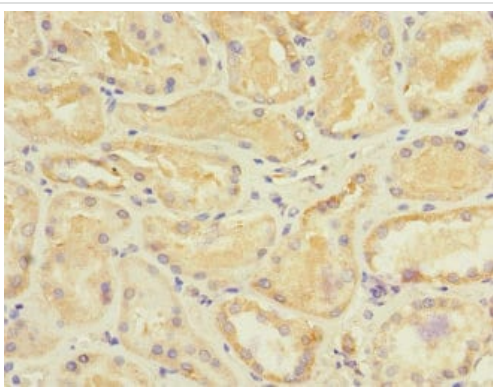
Predicted band size: 48 kDa

Observed band size: 48 kDa



Immunohistochemistry (Formalin/PFA-fixed paraffin-embedded sections) - Anti-STRAD antibody (ab230118)

Paraffin-embedded human brain tissue stained for STRAD using ab230118 at 1/100 dilution in immunohistochemical analysis.



Immunohistochemistry (Formalin/PFA-fixed paraffin-embedded sections) - Anti-STRAD antibody (ab230118)

Paraffin-embedded human kidney tissue stained for STRAD using ab230118 at 1/100 dilution in immunohistochemical analysis.

Please note: All products are "FOR RESEARCH USE ONLY. NOT FOR USE IN DIAGNOSTIC PROCEDURES"

Our Abpromise to you: Quality guaranteed and expert technical support

- Replacement or refund for products not performing as stated on the datasheet
- Valid for 12 months from date of delivery
- Response to your inquiry within 24 hours

- We provide support in Chinese, English, French, German, Japanese and Spanish
- Extensive multi-media technical resources to help you
- We investigate all quality concerns to ensure our products perform to the highest standards

If the product does not perform as described on this datasheet, we will offer a refund or replacement. For full details of the Abpromise, please visit <https://www.abcam.cn/abpromise> or contact our technical team.

Terms and conditions

- Guarantee only valid for products bought direct from Abcam or one of our authorized distributors