

Anti-STIM2 antibody ab59342

★★★★★ 5 Abreviews 7 References 1 图像

概述

产品名称	Anti-STIM2抗体
描述	兔多克隆抗体to STIM2
宿主	Rabbit
特异性	ab59342 is predicted to have no cross-reactivity to STIM1.
经测试应用	适用于: WB
种属反应性	与反应: Mouse
免疫原	Synthetic peptide corresponding to Human STIM2 (C terminal).
常规说明	<p>The Life Science industry has been in the grips of a reproducibility crisis for a number of years. Abcam is leading the way in addressing this with our range of recombinant monoclonal antibodies and knockout edited cell lines for gold-standard validation. Please check that this product meets your needs before purchasing.</p> <p>If you have any questions, special requirements or concerns, please send us an inquiry and/or contact our Support team ahead of purchase. Recommended alternatives for this product can be found below, along with publications, customer reviews and Q&As</p>

性能

形式	Liquid
存放说明	Shipped at 4°C. Store at +4°C.
存储溶液	Preservative: 0.02% Sodium azide Constituent: PBS
纯度	Affinity purified
克隆	多克隆
同种型	IgG

应用

The Abpromise guarantee **Abpromise™**承诺保证使用ab59342于以下的经测试应用

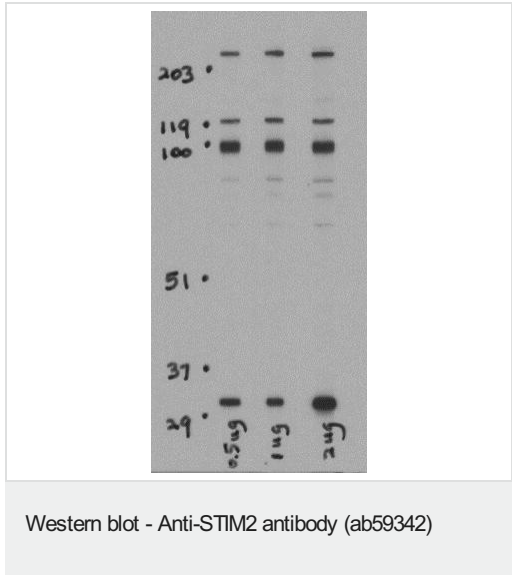
“应用说明”部分 下显示的仅为推荐的起始稀释度;实际最佳的稀释度/浓度应由使用者检定。

应用	Ab评论	说明
WB	★★★★★ (4)	Use a concentration of 0.5 - 1 µg/ml. Detects a band of approximately 95 kDa (predicted molecular weight: 84 kDa).

靶标

功能	Functions as a highly sensitive Ca(2+) sensor in the endoplasmic reticulum which activates both store-operated and store-independent Ca(2+)-influx. Regulates basal cytosolic and endoplasmic reticulum Ca(2+) concentrations. Upon mild variations of the endoplasmic reticulum Ca(2+) concentration, translocates from the endoplasmic reticulum to the plasma membrane where it probably activates the Ca(2+) release-activated Ca(2+) (CRAC) channels ORAI1, ORAI2 and ORAI3. May inhibit STIM1-mediated Ca(2+) influx.
组织特异性	Expressed in all tissues and tumor cell lines examined.
序列相似性	Contains 1 EF-hand domain. Contains 1 SAM (sterile alpha motif) domain.
翻译后修饰	Glycosylated. Phosphorylated predominantly on Ser residues.
细胞定位	Endoplasmic reticulum membrane. Dynamically translocates from a uniform endoplasmic reticulum distribution to punctual endoplasmic reticulum-plasma membrane junctions in response to decrease in endoplasmic reticulum Ca(2+) concentration.

图片



Lane 1 : Anti-STIM2 antibody (ab59342) at 0.5 µg/ml

Lane 2 : Anti-STIM2 antibody (ab59342) at 1 µg/ml

Lane 3 : Anti-STIM2 antibody (ab59342) at 2 µg/ml

All lanes : A-20 cell lysate

Lysates/proteins at 15 µg per lane.

Predicted band size: 84 kDa

Please note: All products are "FOR RESEARCH USE ONLY. NOT FOR USE IN DIAGNOSTIC PROCEDURES"

Our Abpromise to you: Quality guaranteed and expert technical support

- Replacement or refund for products not performing as stated on the datasheet

- Valid for 12 months from date of delivery
- Response to your inquiry within 24 hours
- We provide support in Chinese, English, French, German, Japanese and Spanish
- Extensive multi-media technical resources to help you
- We investigate all quality concerns to ensure our products perform to the highest standards

If the product does not perform as described on this datasheet, we will offer a refund or replacement. For full details of the Abpromise, please visit <https://www.abcam.cn/abpromise> or contact our technical team.

Terms and conditions

- Guarantee only valid for products bought direct from Abcam or one of our authorized distributors