

# Anti-STAT6 (phospho Y641) antibody ab28829

★★★★★ [12 Abreviews](#) [34 References](#) [5 图像](#)

### 概述

产品名称	Anti-STAT6 (phospho Y641)抗体
描述	兔多克隆抗体to STAT6 (phospho Y641)
宿主	Rabbit
经测试应用	适用于: IHC-P, WB
种属反应性	与反应: Human
免疫原	Synthetic peptide corresponding to Human STAT6 (phospho Y641). Synthesized phosphopeptide derived from human STAT6 around the phosphorylation site of Tyrosine 641. Database link: <a href="#">P42226</a>

### 常规说明

The Life Science industry has been in the grips of a reproducibility crisis for a number of years. Abcam is leading the way in addressing this with our range of recombinant monoclonal antibodies and knockout edited cell lines for gold-standard validation. Please check that this product meets your needs before purchasing.

If you have any questions, special requirements or concerns, please send us an inquiry and/or contact our Support team ahead of purchase. Recommended alternatives for this product can be found below, along with publications, customer reviews and Q&As

### 性能

形式	Liquid
存放说明	Shipped at 4°C. Store at +4°C short term (1-2 weeks). Upon delivery aliquot. Store at -20°C long term.
存储溶液	pH: 7.40 Preservative: 0.02% Sodium azide Constituents: 50% Glycerol (glycerin, glycerine), 0.87% Sodium chloride
纯度	Immunogen affinity purified
克隆	多克隆
同种型	IgG

### 应用

The Abpromise guarantee **Abpromise™**承诺保证使用ab28829于以下的经测试应用

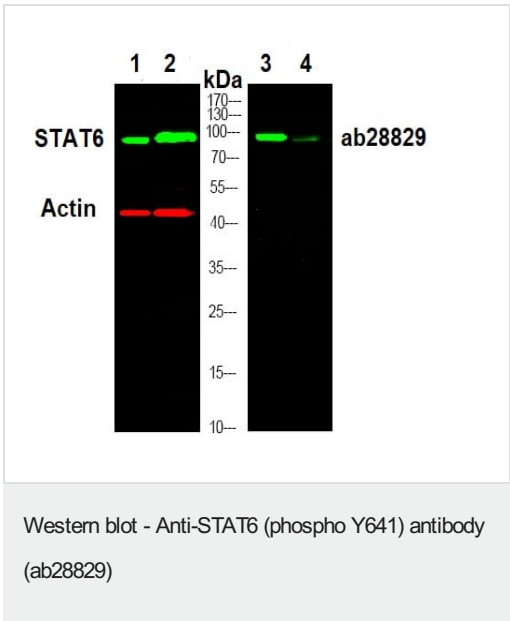
“应用说明”部分 下显示的仅为推荐的起始稀释度;实际最佳的稀释度/浓度应由使用者检定。

应用	Ab评论	说明
IHC-P	★★★★★ (6)	1/50 - 1/100.
WB	★★★★★ (1)	1/500 - 1/1000. Predicted molecular weight: 94 kDa.

靶标

功能	Carries out a dual function: signal transduction and activation of transcription. Involved in interleukin-4 signalling.
序列相似性	Belongs to the transcription factor STAT family. Contains 1 SH2 domain.
翻译后修饰	Tyrosine phosphorylated following stimulation by IL-4 and IL-3.
细胞定位	Cytoplasm. Nucleus. Translocated into the nucleus in response to phosphorylation.

图片



**Lanes 1-2 :** STAT6 antibody  
**Lanes 3-4 :** Anti-STAT6 (phospho Y641) antibody (ab28829) at 1/1000 dilution

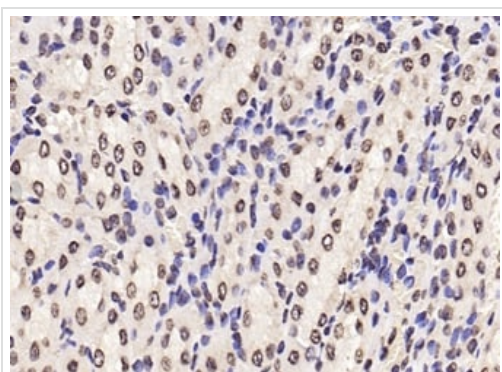
**Lanes 1 & 3 :** K562 cells treated with 100 ng/mL IL4  
**Lanes 2 & 4 :** K562 untreated cells

Lysates/proteins at 20 µg per lane.

**Secondary**  
**All lanes :** Dylight 800 secondary antibody at 1/10000 dilution

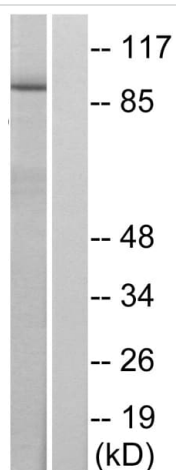
**Predicted band size:** 94 kDa

Loading control is Actin



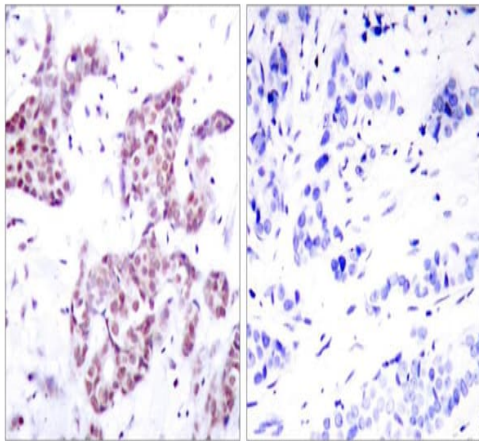
Immunohistochemistry (Formalin/PFA-fixed paraffin-embedded sections) - Anti-STAT6 (phospho Y641) antibody (ab28829)

Immunohistochemical analysis of paraffin-embedded human kidney tissue using anti-STAT6 (phospho Y641) antibody (ab28829) at 1/100 dilution.



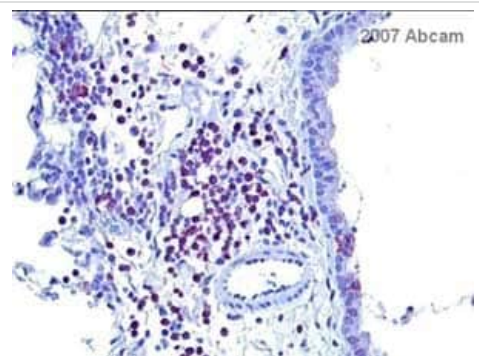
Western blot - Anti-STAT6 (phospho Y641) antibody (ab28829)

Western blot analysis of lysates from HeLa cells treated with IL-4, using STAT6 (Phospho-Tyr641) Antibody. The lane on the right is blocked with the phospho peptide.



Immunohistochemistry (Formalin/PFA-fixed paraffin-embedded sections) analysis of human breast carcinoma tissue labelling STAT6 (phospho Y641) with ab28829. Right pane - blocked with the phospho peptide.

Immunohistochemistry (Formalin/PFA-fixed paraffin-embedded sections) - Anti-STAT6 (phospho Y641) antibody (ab28829)



ab28829 at 1/100 staining mouse lung tissue sections by IHC-P. The tissue was formaldehyde fixed and blocked with serum. A heat mediated antigen retrieval step was performed prior to incubation with the antibody. Ab6720 (Goat polyclonal to Rabbit IgG H&L (biotin)) was used as the secondary antibody.

Immunohistochemistry (Formalin/PFA-fixed paraffin-embedded sections) - Anti-STAT6 (phospho Y641) antibody (ab28829)

This image is courtesy of an anonymous Abreview

**Please note:** All products are "FOR RESEARCH USE ONLY. NOT FOR USE IN DIAGNOSTIC PROCEDURES"

### Our Abpromise to you: Quality guaranteed and expert technical support

- Replacement or refund for products not performing as stated on the datasheet
- Valid for 12 months from date of delivery
- Response to your inquiry within 24 hours
- We provide support in Chinese, English, French, German, Japanese and Spanish
- Extensive multi-media technical resources to help you
- We investigate all quality concerns to ensure our products perform to the highest standards

If the product does not perform as described on this datasheet, we will offer a refund or replacement. For full details of the Abpromise, please visit <https://www.abcam.cn/abpromise> or contact our technical team.

## Terms and conditions

---

- Guarantee only valid for products bought direct from Abcam or one of our authorized distributors