

Anti-STAT6 antibody [EPR18278-222] - BSA and Azide free ab251555

重组 RabMAb

6 图像

概述

产品名称	Anti-STAT6抗体[EPR18278-222] - BSA and Azide free
描述	兔单克隆抗体[EPR18278-222] 到 STAT6 - BSA and Azide free
宿主	Rabbit
经测试应用	适用于: IP, WB, ICC/IF
种属反应性	与反应: Mouse, Rat, Human
免疫原	Synthetic peptide. This information is proprietary to Abcam and/or its suppliers.
常规说明	<p>ab251555 is the carrier-free version of ab217998.</p> <p>Our carrier-free antibodies are typically supplied in a PBS-only formulation, purified and free of BSA, sodium azide and glycerol. The carrier-free buffer and high concentration allow for increased conjugation efficiency.</p> <p>This conjugation-ready format is designed for use with fluorochromes, metal isotopes, oligonucleotides, and enzymes, which makes them ideal for antibody labelling, functional and cell-based assays, flow-based assays (e.g. mass cytometry) and Multiplex Imaging applications.</p> <p>Use our conjugation kits for antibody conjugates that are ready-to-use in as little as 20 minutes with <1 minute hands-on-time and 100% antibody recovery: available for fluorescent dyes, HRP, biotin and gold.</p> <p>This product is compatible with the Maxpar[®] Antibody Labeling Kit from Fluidigm, without the need for antibody preparation. Maxpar[®] is a trademark of Fluidigm Canada Inc.</p> <p>This product is a recombinant monoclonal antibody, which offers several advantages including:</p> <ul style="list-style-type: none">- High batch-to-batch consistency and reproducibility- Improved sensitivity and specificity- Long-term security of supply- Animal-free production <p>For more information see here.</p> <p>Our RabMAb[®] technology is a patented hybridoma-based technology for making rabbit monoclonal antibodies. For details on our patents, please refer to RabMAb[®] patents.</p>

性能

形式	Liquid
存放说明	Shipped at 4°C. Store at +4°C. Do Not Freeze.
存储溶液	pH: 7.2 Constituent: PBS
无载体	是
纯度	Protein A purified
克隆	单克隆
克隆编号	EPR18278-222
同种型	IgG

应用

The Abpromise guarantee **Abpromise™**承诺保证使用ab251555于以下的经测试应用

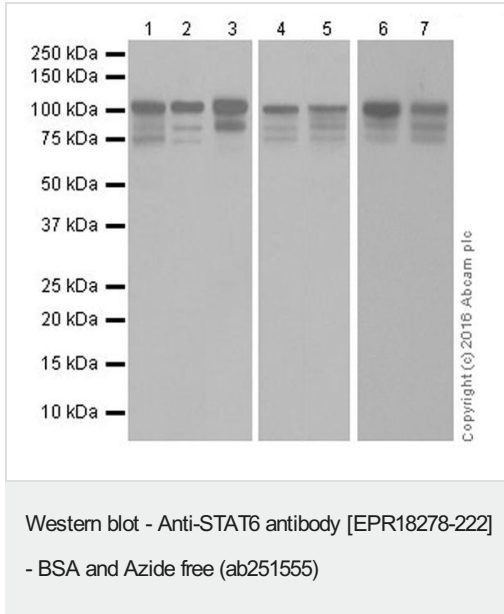
“应用说明”部分 下显示的仅为推荐的起始稀释度;实际最佳的稀释度/浓度应由使用者检定。

应用	Ab评论	说明
IP		Use at an assay dependent concentration.
WB		Use at an assay dependent concentration. Detects a band of approximately 110, 81, 75 kDa (predicted molecular weight: 94 kDa).
ICC/IF		Use at an assay dependent concentration.

靶标

功能	Carries out a dual function: signal transduction and activation of transcription. Involved in interleukin-4 signalling.
序列相似性	Belongs to the transcription factor STAT family. Contains 1 SH2 domain.
翻译后修饰	Tyrosine phosphorylated following stimulation by IL-4 and IL-3.
细胞定位	Cytoplasm. Nucleus. Translocated into the nucleus in response to phosphorylation.

图片



All lanes : Anti-STAT6 antibody [EPR18278-222] (**ab217998**) at 1/1000 dilution

Lane 1 : Human thymus lysate

Lane 2 : HeLa (Human epithelial cell line from cervix adenocarcinoma) whole cell lysate

Lane 3 : P388D1 (Mouse lymphoma N106 O91 monocyte; macrophage cell line) whole cell lysate

Lane 4 : Ramos (Human Burkitt's lymphoma cell line) whole cell lysate

Lane 5 : THP-1 (Human monocytic leukemia cell line) whole cell lysate

Lane 6 : Daudi (Human Burkitt's lymphoma cell line) whole cell lysate

Lane 7 : Raji (Human Burkitt's lymphoma cell line) whole cell lysate

Lysates/proteins at 20 µg per lane.

Secondary

All lanes : Goat Anti-Rabbit IgG H&L (HRP) (**ab97051**) at 1/100000 dilution

Predicted band size: 94 kDa

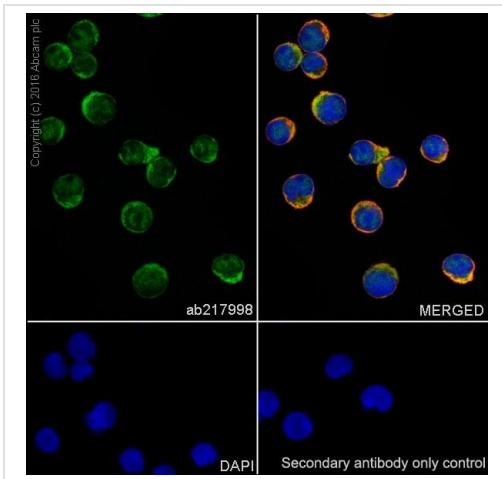
Observed band size: 110,75,81 kDa

This data was developed using **ab217998**, the same antibody clone in a different buffer formulation.

Blocking and dilution buffer: 5% NFD/MTBST.

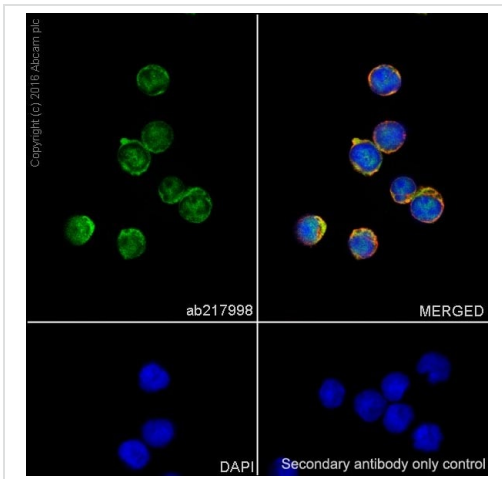
Exposure times: Lanes 1-3: 8 seconds; Lanes 4-5: 2 seconds; Lanes 6-7: 1 second.

The molecular weight observed is consistent with what has been described in the literature (PMID: 21411736). This antibody recognizes three isoforms of STAT6, isoform 1 (110kDa), isoform 2 (75kDa), isoform 3 (81kDa), which is consistent with the Uniprot annotation.



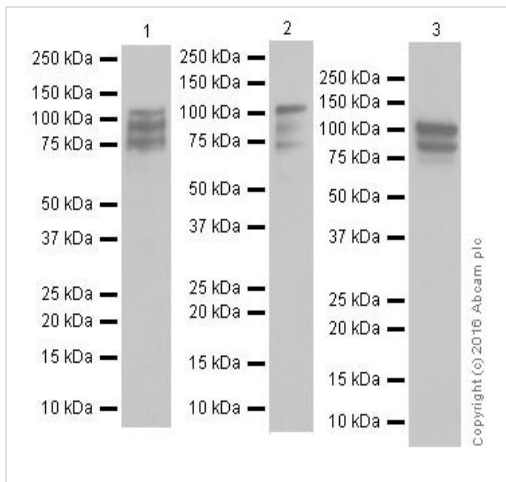
Immunocytochemistry/ Immunofluorescence - Anti-STAT6 antibody [EPR18278-222] - BSA and Azide free (ab251555)

This data was developed using [ab217998](#), the same antibody clone in a different buffer formulation. Immunofluorescent analysis of 100% methanol-fixed Raji (Human Burkitt's lymphoma cell line) cells labeling STAT6 with [ab217998](#) at 1/500 dilution, followed by Goat anti-rabbit IgG (Alexa Fluor[®] 488) ([ab150077](#)) secondary antibody at 1/1000 dilution (green). Confocal image showing cytoplasmic and nuclear staining on Raji cell line [PMID: 11781246] [PMID: 23575898]. The nuclear counterstain is DAPI (blue). Tubulin is detected with [ab195889](#) (Anti-alpha Tubulin antibody [DM1A] - Microtubule Marker (Alexa Fluor[®] 594)) at 1/200 dilution (red). Secondary antibody only control: Used PBS instead of primary antibody, secondary antibody is Goat anti-rabbit IgG (Alexa Fluor[®] 488) ([ab150077](#)) at 1/1000 dilution.



Immunocytochemistry/ Immunofluorescence - Anti-STAT6 antibody [EPR18278-222] - BSA and Azide free (ab251555)

This data was developed using [ab217998](#), the same antibody clone in a different buffer formulation. Immunofluorescent analysis of 100% methanol-fixed Daudi (Human Burkitt's lymphoma cell line) cells labeling STAT6 with [ab217998](#) at 1/500 dilution, followed by Goat anti-rabbit IgG (Alexa Fluor[®] 488) ([ab150077](#)) secondary antibody at 1/1000 dilution (green). Confocal image showing cytoplasmic and nuclear staining on Daudi cell line. The nuclear counterstain is DAPI (blue). Tubulin is detected with [ab195889](#) (Anti-alpha Tubulin antibody [DM1A] - Microtubule Marker (Alexa Fluor[®] 594)) at 1/200 dilution (red). Secondary antibody only control: Used PBS instead of primary antibody, secondary antibody is Goat anti-rabbit IgG (Alexa Fluor[®] 488) ([ab150077](#)) at 1/1000 dilution.



Western blot - Anti-STAT6 antibody [EPR18278-222]
- BSA and Azide free (ab251555)

All lanes : Anti-STAT6 antibody [EPR18278-222] (**ab217998**) at 1/2000 dilution

Lane 1 : Mouse spleen tissue lysate

Lane 2 : Rat spleen tissue lysate

Lane 3 : A20 (Mouse reticulum sarcoma cell line) whole cell lysate

Lysates/proteins at 10 µg per lane.

Secondary

All lanes : Goat Anti-Rabbit IgG H&L (HRP) (**ab97051**) at 1/100000 dilution

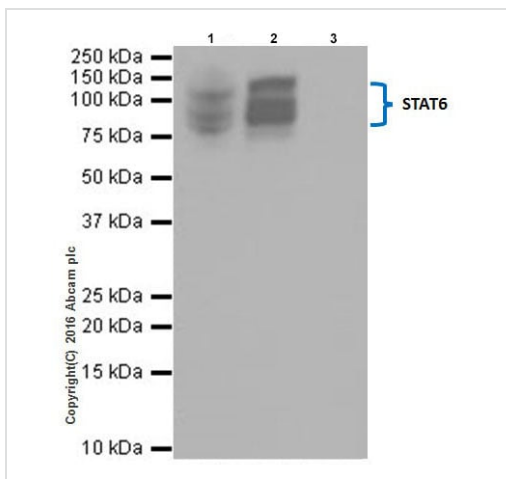
Predicted band size: 94 kDa

Observed band size: 110,75,81 kDa

This data was developed using **ab217998**, the same antibody clone in a different buffer formulation.

Blocking and dilution buffer: 5% NFDm/TBST.

Exposure time: Lane 1: 10 seconds; Lane 2: 3 seconds; Lane 3: 5 seconds.



Immunoprecipitation - Anti-STAT6 antibody
[EPR18278-222] - BSA and Azide free (ab251555)

This data was developed using **ab217998**, the same antibody clone in a different buffer formulation.

STAT6 was immunoprecipitated from 0.35 mg of Raji (Human Burkitt's lymphoma cell line) whole cell lysate with **ab217998** at 1/40 dilution. Western blot was performed from the immunoprecipitate using **ab217998** at 1/500 dilution. VeriBlot for IP Detection Reagent (HRP) (**ab131366**), was used for detection at 1/1000 dilution.

Lane 1: Raji whole cell lysate. 10 µg (Input).

Lane 2: **ab217998** IP in Raji whole cell lysate.

Lane 3: Rabbit monoclonal IgG (**ab172730**) instead of **ab217998** in Raji whole cell lysate.

Blocking and dilution buffer: 5% NFDm/TBST.

Exposure time: 1 second.

This antibody recognizes three isoforms of STAT6, isoform 1 (110kDa), isoform 2 (75kDa), isoform 3 (81kDa), respectively which is consistent with the Uniprot annotation.

Why choose a recombinant antibody?



Research with confidence
Consistent and reproducible results



Long-term and scalable supply
Recombinant technology



Success from the first experiment
Confirmed specificity



Ethical standards compliant
Animal-free production

Anti-STAT6 antibody [EPR18278-222] - BSA and Azide free (ab251555)

Please note: All products are "FOR RESEARCH USE ONLY. NOT FOR USE IN DIAGNOSTIC PROCEDURES"

Our Abpromise to you: Quality guaranteed and expert technical support

- Replacement or refund for products not performing as stated on the datasheet
- Valid for 12 months from date of delivery
- Response to your inquiry within 24 hours
- We provide support in Chinese, English, French, German, Japanese and Spanish
- Extensive multi-media technical resources to help you
- We investigate all quality concerns to ensure our products perform to the highest standards

If the product does not perform as described on this datasheet, we will offer a refund or replacement. For full details of the Abpromise, please visit <https://www.abcam.cn/abpromise> or contact our technical team.

Terms and conditions

- Guarantee only valid for products bought direct from Abcam or one of our authorized distributors