


Anti-STAT6 antibody ab227497

4 图像

概述

产品名称	Anti-STAT6抗体
描述	兔多克隆抗体to STAT6
宿主	Rabbit
经测试应用	适用于: WB, IP, IHC-P
种属反应性	与反应: Mouse, Human 预测可用于: Pig, Rhesus monkey 
免疫原	Recombinant fragment within Human STAT6 (internal sequence). The exact sequence is proprietary. Database link: P42226
阳性对照	IP: HeLa whole cell lysate. IHC-P: Mouse kidney tissue; C2C12 xenograft tissue. WB: HepG2 whole cell lysate.
常规说明	<p>The Life Science industry has been in the grips of a reproducibility crisis for a number of years. Abcam is leading the way in addressing this with our range of recombinant monoclonal antibodies and knockout edited cell lines for gold-standard validation. Please check that this product meets your needs before purchasing.</p> <p>If you have any questions, special requirements or concerns, please send us an inquiry and/or contact our Support team ahead of purchase. Recommended alternatives for this product can be found below, along with publications, customer reviews and Q&As</p>

性能

形式	Liquid
存放说明	Shipped at 4°C. Store at +4°C short term (1-2 weeks). Upon delivery aliquot. Store at -20°C long term. Avoid freeze / thaw cycle.
存储溶液	pH: 7.00 Preservative: 0.025% Proclin 300 Constituents: 78% PBS, 1% BSA, 20% Glycerol (glycerin, glycerine)
纯度	Immunogen affinity purified
克隆	多克隆
同种型	IgG

应用

The Abpromise guarantee **Abpromise™**承诺保证使用ab227497于以下的经测试应用

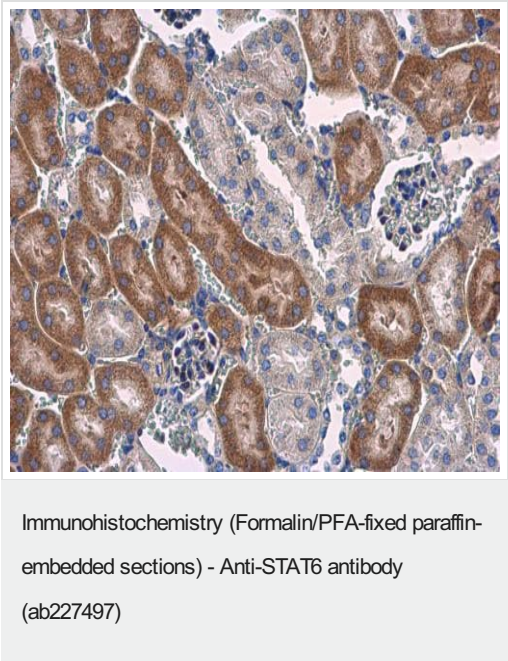
“应用说明”部分 下显示的仅为推荐的起始稀释度;实际最佳的稀释度/浓度应由使用者检定。

应用	Ab评论	说明
WB		1/500 - 1/3000. Predicted molecular weight: 94 kDa.
IP		1/500 - 1/1000.
IHC-P		1/100 - 1/1000.

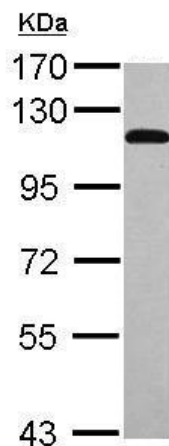
靶标

功能	Carries out a dual function: signal transduction and activation of transcription. Involved in interleukin-4 signalling.
序列相似性	Belongs to the transcription factor STAT family. Contains 1 SH2 domain.
翻译后修饰	Tyrosine phosphorylated following stimulation by IL-4 and IL-3.
细胞定位	Cytoplasm. Nucleus. Translocated into the nucleus in response to phosphorylation.

图片



Paraffin-embedded mouse kidney tissue stained for STAT6 using ab227497 at 1/500 dilution in immunohistochemical analysis.



Western blot - Anti-STAT6 antibody (ab227497)

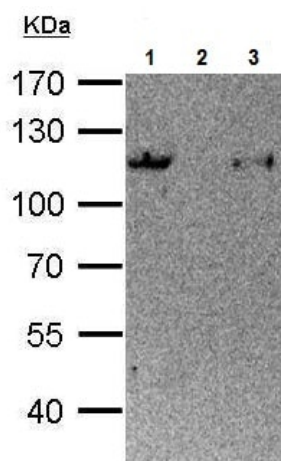
Anti-STAT6 antibody (ab227497) at 1/1000 dilution + HepG2 (human liver hepatocellular carcinoma cell line) whole cell lysate at 30 µg

Secondary

HRP-conjugated anti-rabbit IgG

Predicted band size: 94 kDa

7.5% SDS-PAGE gel.



Immunoprecipitation - Anti-STAT6 antibody (ab227497)

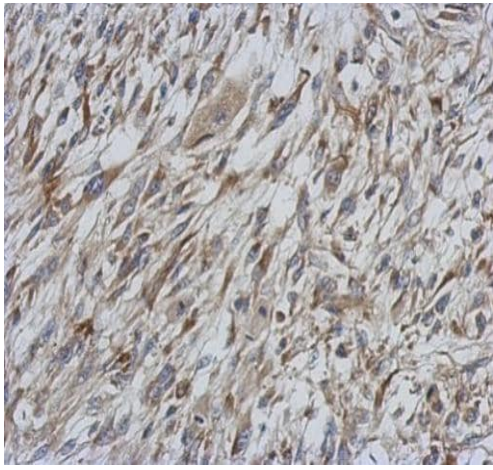
STAT6 was immunoprecipitated from HeLa (human epithelial cell line from cervix adenocarcinoma) whole cell lysate with 2 µg ab227497. Western blot was performed from the immunoprecipitate using ab227497. Anti-Rabbit IgG was used as a secondary reagent.

Lane 1: HeLa whole cell lysate 50 µg.

Lane 2: Control IP in HeLa whole cell lysate with 2 µg of preimmune rabbit IgG.

Lane 3: ab227497 IP in HeLa whole cell lysate.

10% SDS-PAGE gel.



Paraffin-embedded C2C12 (mouse) xenograft tissue stained for STAT6 using ab227497 at 1/500 dilution in immunohistochemical analysis.

Immunohistochemistry (Formalin/PFA-fixed paraffin-embedded sections) - Anti-STAT6 antibody (ab227497)

Please note: All products are "FOR RESEARCH USE ONLY. NOT FOR USE IN DIAGNOSTIC PROCEDURES"

Our Abpromise to you: Quality guaranteed and expert technical support

- Replacement or refund for products not performing as stated on the datasheet
- Valid for 12 months from date of delivery
- Response to your inquiry within 24 hours
- We provide support in Chinese, English, French, German, Japanese and Spanish
- Extensive multi-media technical resources to help you
- We investigate all quality concerns to ensure our products perform to the highest standards

If the product does not perform as described on this datasheet, we will offer a refund or replacement. For full details of the Abpromise, please visit <https://www.abcam.cn/abpromise> or contact our technical team.

Terms and conditions

- Guarantee only valid for products bought direct from Abcam or one of our authorized distributors