

Anti-STAT1 antibody [EPR4407] - BSA and Azide free ab239968

敲除验证
重组
RabMAb

7 图像

概述

产品名称	Anti-STAT1抗体[EPR4407] - BSA and Azide free
描述	兔单克隆抗体[EPR4407] to STAT1 - BSA and Azide free
宿主	Rabbit
经测试应用	适用于: ChIC/CUT&RUN-seq, Flow Cyt (Intra), IP, ICC/IF, IHC-P, WB
种属反应性	与反应: Human
免疫原	Synthetic peptide. This information is proprietary to Abcam and/or its suppliers.
阳性对照	WB: HeLa, A431, 293T, and MCF-7 cell lysates ICC/IF: MCF-7 cells Flow Cyt (intra): HeLa IHC-P: Human ovary carcinoma tissue. IP: MCF7. ChIC/CUT&RUN-Seq: HeLa cells.
常规说明	<p>ab239968 is the carrier-free version of ab109320.</p> <p>Our carrier-free antibodies are typically supplied in a PBS-only formulation, purified and free of BSA, sodium azide and glycerol. The carrier-free buffer and high concentration allow for increased conjugation efficiency.</p> <p>This conjugation-ready format is designed for use with fluorochromes, metal isotopes, oligonucleotides, and enzymes, which makes them ideal for antibody labelling, functional and cell-based assays, flow-based assays (e.g. mass cytometry) and Multiplex Imaging applications.</p> <p>Use our conjugation kits for antibody conjugates that are ready-to-use in as little as 20 minutes with <1 minute hands-on-time and 100% antibody recovery: available for fluorescent dyes, HRP, biotin and gold.</p> <p>This product is compatible with the Maxpar[®] Antibody Labeling Kit from Fluidigm, without the need for antibody preparation. Maxpar[®] is a trademark of Fluidigm Canada Inc.</p> <p>This product is a recombinant monoclonal antibody, which offers several advantages including:</p> <ul style="list-style-type: none"> - High batch-to-batch consistency and reproducibility - Improved sensitivity and specificity - Long-term security of supply - Animal-free production <p>For more information see here.</p> <p>Our RabMAb[®] technology is a patented hybridoma-based technology for making rabbit monoclonal antibodies. For details on our patents, please refer to RabMAb[®] patents.</p> <p>Mouse: We have preliminary internal testing data to indicate this antibody may not react with this species. Please contact us for more information.</p>

性能

形式	Liquid
存放说明	Shipped at 4°C. Store at +4°C. Do Not Freeze.
存储溶液	pH: 7.2 Constituent: PBS
无载体	是
纯度	Protein A purified
克隆	单克隆
克隆编号	EPR4407
同种型	IgG

应用

The Abpromise guarantee **Abpromise™**承诺保证使用ab239968于以下的经测试应用

“应用说明”部分 下显示的仅为推荐的起始稀释度;实际最佳的稀释度/浓度应由使用者检定。

应用	Ab评论	说明
ChIC/CUT&RUN-seq		Use at an assay dependent concentration.
Flow Cyt (Intra)		Use at an assay dependent concentration. ab199376 - Rabbit monoclonal IgG, is suitable for use as an isotype control with this antibody.
IP		Use at an assay dependent concentration.
ICC/IF		Use at an assay dependent concentration.
IHC-P		Use at an assay dependent concentration. Perform heat mediated antigen retrieval before commencing with IHC staining protocol.
WB		Use at an assay dependent concentration. Predicted molecular weight: 87 kDa.

靶标

功能 Signal transducer and activator of transcription that mediates signaling by interferons (IFNs). Following type I IFN (IFN-alpha and IFN-beta) binding to cell surface receptors, Jak kinases (TYK2 and JAK1) are activated, leading to tyrosine phosphorylation of STAT1 and STAT2. The phosphorylated STATs dimerize, associate with ISGF3G/IRF-9 to form a complex termed ISGF3 transcription factor, that enters the nucleus. ISGF3 binds to the IFN stimulated response element (ISRE) to activate the transcription of interferon stimulated genes, which drive the cell in an antiviral state. In response to type II IFN (IFN-gamma), STAT1 is tyrosine- and serine-

phosphorylated. It then forms a homodimer termed IFN-gamma-activated factor (GAF), migrates into the nucleus and binds to the IFN gamma activated sequence (GAS) to drive the expression of the target genes, inducing a cellular antiviral state.

疾病相关

Note=STAT1 deficiency results in impaired immune response leading to severe mycobacterial and viral diseases. In the case of complete deficiency, patients can die of viral disease. Defects in STAT1 are a cause of mendelian susceptibility to mycobacterial disease (MSMD) [MIM:209950]; also known as familial disseminated atypical mycobacterial infection. This rare condition confers predisposition to illness caused by moderately virulent mycobacterial species, such as Bacillus Calmette-Guerin (BCG) vaccine and environmental non-tuberculous mycobacteria, and by the more virulent Mycobacterium tuberculosis. Other microorganisms rarely cause severe clinical disease in individuals with susceptibility to mycobacterial infections, with the exception of Salmonella which infects less than 50% of these individuals. The pathogenic mechanism underlying MSMD is the impairment of interferon-gamma mediated immunity whose severity determines the clinical outcome. Some patients die of overwhelming mycobacterial disease with lepromatous-like lesions in early childhood, whereas others develop, later in life, disseminated but curable infections with tuberculoid granulomas. MSMD is a genetically heterogeneous disease with autosomal recessive, autosomal dominant or X-linked inheritance.

序列相似性

Belongs to the transcription factor STAT family.

Contains 1 SH2 domain.

翻译后修饰

Phosphorylated on tyrosine and serine residues in response to IFN-alpha, IFN-gamma, PDGF and EGF. Phosphorylation on Tyr-701 (lacking in beta form) by JAK promotes dimerization and subsequent translocation to the nucleus. Phosphorylation on Ser-727 by several kinases including MAPK14, ERK1/2 and CAMKII on IFN-gamma stimulation, regulates STAT1 transcriptional activity. Phosphorylation on Ser-727 promotes sumoylation though increasing interaction with PIAS. Phosphorylation on Ser-727 by PKCdelta induces apoptosis in response to DNA-damaging agents.

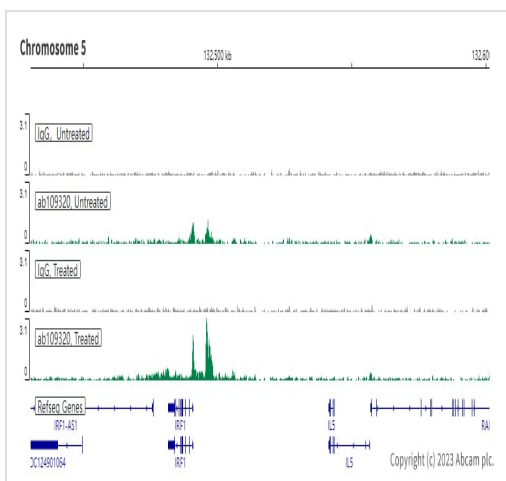
Sumoylated by SUMO1, SUMO2 and SUMO3. Sumoylation is enhanced by IFN-gamma-induced phosphorylation on Ser-727, and by interaction with PIAS proteins. Enhances the transactivation activity.

ISGylated.

细胞定位

Cytoplasm. Nucleus. Translocated into the nucleus in response to IFN-gamma-induced tyrosine phosphorylation and dimerization.

图片



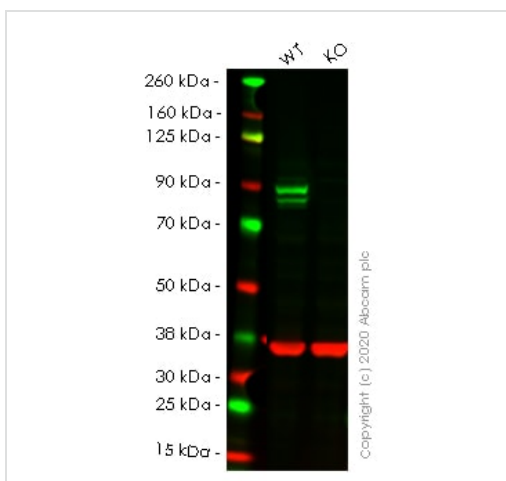
ChIC/CUT&RUN sequencing - Anti-STAT1 antibody [EPR4407] - BSA and Azide free (ab239968)

ChIC/CUT&RUN was performed using a pAG-MNase at a final concentration of 700 ng/mL, 2 x 10⁵ HeLa (Human cervix adenocarcinoma epithelial cell line) cells treated with IFN gamma (50ng/ml 1h) and 5µg of **ab109320** [EPR4407]. The resulting DNA was sequenced on the Illumina NovaSeq 6000 to a depth of 10 million reads. The negative IgG control **ab172730** is also shown.

Additional screenshots of mapped reads can be downloaded [here](#).

The University of Geneva owns patents relevant to ChIC (Chromatin Immuno-Cleavage) methods.

This data was developed using the same antibody clone in a different buffer formulation (**ab109320**).



Western blot - Anti-STAT1 antibody [EPR4407] - BSA and Azide free (ab239968)

All lanes : Anti-STAT1 antibody [EPR4407] (**ab109320**) at 1/10000 dilution

Lane 1 : Wild-type HeLa cell lysate

Lane 2 : STAT1 knockout HeLa cell lysate

Lysates/proteins at 20 µg per lane.

Performed under reducing conditions.

Predicted band size: 87 kDa

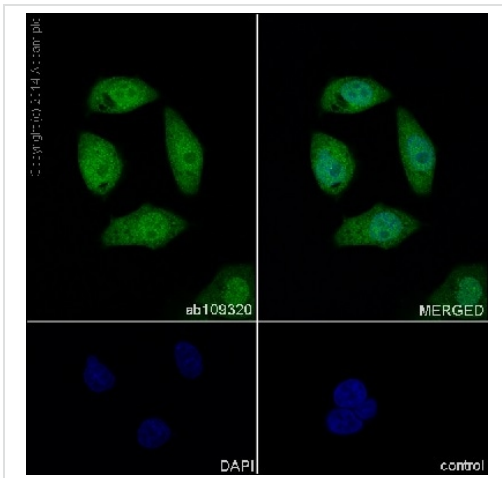
Observed band size: 87 kDa

This data was developed using the same antibody clone in a different buffer formulation (**ab109320**).

Lanes 1-2: Merged signal (red and green). Green - **ab109320** observed at 87 kDa. Red - Anti-GAPDH antibody [6C5] - Loading Control (**ab8245**) observed at 37 kDa.

ab109320 was shown to react with STAT1 in wild-type HeLa cells in western blot. Loss of signal was observed when knockout cell line **ab255346** (knockout cell lysate **ab263837**) was used. Wild-type HeLa and STAT1 knockout HeLa cell lysates were subjected to SDS-PAGE. Membrane was blocked for 1 hour at room temperature in 0.1% TBST with 3% non-fat dried milk. **ab109320** and Anti-GAPDH antibody [6C5] - Loading Control (**ab8245**) overnight at 4°C at a 1 in 10000 dilution and a 1 in 20000 dilution respectively. Blots were developed with Goat anti-Rabbit IgG H&L

(IRDye[®]800CW) preadsorbed (**ab216773**) and Goat anti-Mouse IgG H&L (IRDye[®]680RD) preadsorbed (**ab216776**) secondary antibodies at 1 in 20000 dilution for 1 hour at room temperature before imaging.



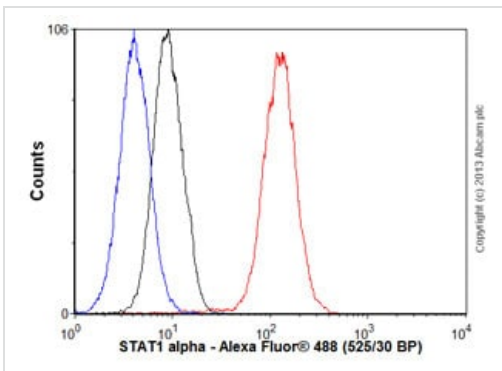
Immunocytochemistry/ Immunofluorescence - Anti-STAT1 antibody [EPR4407] - BSA and Azide free (ab239968)

Immunofluorescent analysis of 4% paraformaldehyde-fixed, 0.1% Triton X-100 permeabilized MCF-7 (Human breast adenocarcinoma cell line) cell line labeling STAT1 with **ab109320** at 1/500 dilution, followed by Goat Anti-Rabbit IgG H&L (Alexa Fluor[®] 488) (**ab150077**) secondary antibody at 1/1000 dilution (green).

Confocal image showing nuclear and cytoplasmic staining on MCF7 cells

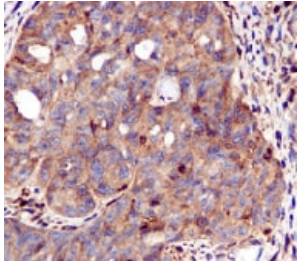
The nuclear counterstain is DAPI (blue).

This data was developed using the same antibody clone in a different buffer formulation containing PBS, BSA, glycerol, and sodium azide (**ab109320**).



Flow Cytometry (Intracellular) - Anti-STAT1 antibody [EPR4407] - BSA and Azide free (ab239968)

Overlay histogram showing HeLa cells stained with **ab109320** (red line). The cells were fixed with 80% methanol (5 min) and then permeabilized with 0.1% PBS-Tween for 20 min. The cells were then incubated in 1x PBS / 10% normal goat serum / 0.3M glycine to block non-specific protein-protein interactions followed by the antibody (**ab109320**, 1/10000 dilution) for 30 min at 22°C. The secondary antibody used was Alexa Fluor[®] 488 goat anti-rabbit IgG (H&L) (**ab150077**) at 1/2000 dilution for 30 min at 22°C. Isotype control antibody (black line) was rabbit IgG (monoclonal) (0.1 µg/1x10⁶ cells) used under the same conditions. Unlabelled sample (blue line) was also used as a control. Acquisition of >5,000 events were collected using a 20mW Argon ion laser (488nm) and 525/30 bandpass filter. This data was developed using the same antibody clone in a different buffer formulation containing PBS, BSA, glycerol, and sodium azide (**ab109320**).



Immunohistochemistry (Formalin/PFA-fixed paraffin-embedded sections) - Anti-STAT1 antibody [EPR4407] - BSA and Azide free (ab239968)

ab109320 at 1/100 dilution staining STAT1 in Human ovary carcinoma by Immunohistochemistry, Paraffin-embedded tissue.

This data was developed using the same antibody clone in a different buffer formulation containing PBS, BSA, glycerol, and sodium azide (**ab109320**).

Perform heat mediated antigen retrieval before commencing with IHC staining protocol.



Immunoprecipitation - Anti-STAT1 antibody [EPR4407] - BSA and Azide free (ab239968)

This data was developed using **ab109320**, the same antibody clone in a different buffer formulation.

STAT1 was immunoprecipitated from 0.35 mg MCF7 (Human breast adenocarcinoma epithelial cell) whole cell lysate 10 µg with **ab109320** at 1/50 dilution (2µg). VeriBlot for IP Detection Reagent (HRP)(**ab131366**) was used at 1/5000 dilution.

Lane 1: MCF7 (Human breast adenocarcinoma epithelial cell) whole cell lysate 10 µg

Lane 2: abab109320 IP in MCF7 whole cell lysate

Lane 3: Rabbit monoclonal IgG (**ab172730**) instead of **ab109320** in MCF7 whole cell lysate

Blocking and dilution buffer and concentration: 5% NFDN/TBST.

Why choose a recombinant antibody?



Research with confidence
Consistent and reproducible results



Long-term and scalable supply
Recombinant technology



Success from the first experiment
Confirmed specificity



Ethical standards compliant
Animal-free production

Anti-STAT1 antibody [EPR4407] - BSA and Azide free (ab239968)

Please note: All products are "FOR RESEARCH USE ONLY. NOT FOR USE IN DIAGNOSTIC PROCEDURES"

Our Abpromise to you: Quality guaranteed and expert technical support

- Replacement or refund for products not performing as stated on the datasheet
- Valid for 12 months from date of delivery
- Response to your inquiry within 24 hours
- We provide support in Chinese, English, French, German, Japanese and Spanish
- Extensive multi-media technical resources to help you
- We investigate all quality concerns to ensure our products perform to the highest standards

If the product does not perform as described on this datasheet, we will offer a refund or replacement. For full details of the Abpromise, please visit <https://www.abcam.cn/abpromise> or contact our technical team.

Terms and conditions

- Guarantee only valid for products bought direct from Abcam or one of our authorized distributors