


### Anti-SREBP2 antibody ab30682

★★★★★ [11 Abreviews](#) [137 References](#) [3 图像](#)

#### 概述

产品名称	Anti-SREBP2抗体
描述	兔多克隆抗体to SREBP2
宿主	Rabbit
经测试应用	适用于: ICC/IF, WB, IHC-Fr
种属反应性	与反应: Rat, Chicken, Human 预测可用于: Guinea pig, Pig, Xenopus laevis, Chinese hamster 
免疫原	Synthetic peptide corresponding to Human SREBP2 aa 455-469. Sequence: SPLLDDAKVKDEPDS  Database link: <a href="#">Q12772</a> <div>  <a href="#">Run BLAST with</a>  <a href="#">Run BLAST with</a> </div>
阳性对照	ICC: HeLa cells. WB: Human fibroblast cell lysate, Rat testis supernatant, Human retina whole cell lysate.
常规说明	<p>The Life Science industry has been in the grips of a reproducibility crisis for a number of years. Abcam is leading the way in addressing this with our range of recombinant monoclonal antibodies and knockout edited cell lines for gold-standard validation. Please check that this product meets your needs before purchasing.</p> <p>If you have any questions, special requirements or concerns, please send us an inquiry and/or contact our Support team ahead of purchase. Recommended alternatives for this product can be found below, along with publications, customer reviews and Q&amp;As</p>

#### 性能

形式	Liquid
存放说明	Shipped at 4°C. Store at +4°C short term (1-2 weeks). Upon delivery aliquot. Store at -20°C. Avoid freeze / thaw cycle.
存储溶液	pH: 7.40 Preservative: 0.02% Sodium azide Constituents: Tris buffered saline, 50% Glycerol, 0.1% BSA
纯度	Immunogen affinity purified

克隆

多克隆

同种型

IgG

应用

The Abpromise guarantee

Abpromise™承诺保证使用ab30682于以下的经测试应用

“应用说明”部分 下显示的仅为推荐的起始稀释度;实际最佳的稀释度/浓度应由使用者检定。

应用	Ab评论	说明
ICC/IF		Use a concentration of 1 µg/ml.
WB	★★★★★ (10)	1/200 - 1/1000. Detects a band of approximately 126 kDa (predicted molecular weight: 126 kDa). Block with 5% non-fat dry milk in TBS pH 7.4 for 1-2 hours at room temperature or over night at 4°C.
IHC-Fr		Use at an assay dependent concentration.

靶标

功能

Transcriptional activator required for lipid homeostasis. Regulates transcription of the LDL receptor gene as well as the cholesterol and to a lesser degree the fatty acid synthesis pathway (By similarity). Binds the sterol regulatory element 1 (SRE-1) (5'-ATCACCCAC-3') found in the flanking region of the LDRL and HMG-CoA synthase genes.

组织特异性

Ubiquitously expressed in adult and fetal tissues.

序列相似性

Belongs to the SREBP family.  
Contains 1 basic helix-loop-helix (bHLH) domain.

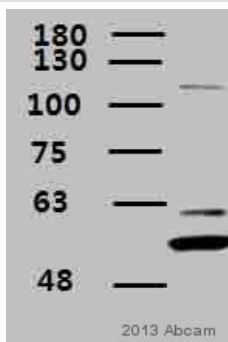
翻译后修饰

At low cholesterol the SCAP/SREBP complex is recruited into COPII vesicles for export from the ER. In the Golgi complex SREBPs are cleaved sequentially by site-1 and site-2 protease. The first cleavage by site-1 protease occurs within the luminal loop, the second cleavage by site-2 protease occurs within the first transmembrane domain and releases the transcription factor from the Golgi membrane. Apoptosis triggers cleavage by the cysteine proteases caspase-3 and caspase-7.

细胞定位

Nucleus and Endoplasmic reticulum membrane. Golgi apparatus membrane. Cytoplasmic vesicle > COPII-coated vesicle membrane. Moves from the endoplasmic reticulum to the Golgi in the absence of sterols.

图片



Western blot - Anti-SREBP2 antibody (ab30682)

This image is courtesy of an Abreview by Dongil Kim.

Anti-SREBP2 antibody (ab30682) at 1/1000 dilution + Human retina whole cell lysate at 30 µg

### Secondary

HRP-conjugated goat anti-rabbit polyclonal at 1/1000 dilution

Developed using the ECL technique.

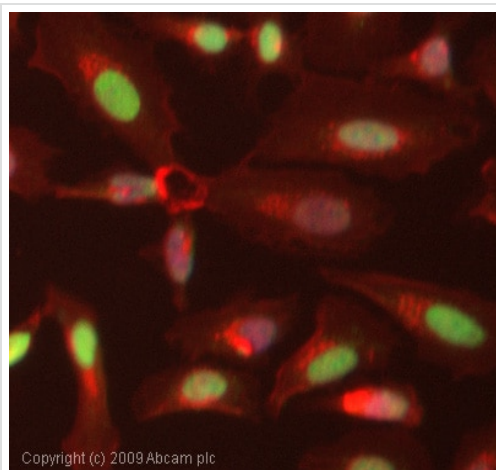
Performed under reducing conditions.

**Predicted band size:** 126 kDa

**Additional bands at:** 126, 55 kDa, 60 kDa (possible non-specific binding). We are unsure as to the identity of these extra bands.

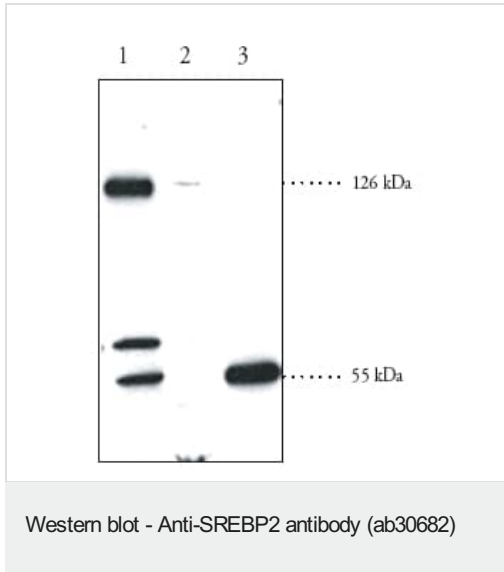
**Exposure time:** 6 minutes

Blocking: 7% milk for 60 minutes at 20°C.



Immunocytochemistry/ Immunofluorescence - Anti-SREBP2 antibody (ab30682)

ICC/IF image of ab30682 stained HeLa cells. The cells were 4% PFA fixed (10 min) and then incubated in 1%BSA / 10% normal goat serum / 0.3M glycine in 0.1% PBS-Tween for 1h to permeabilise the cells and block non-specific protein-protein interactions. The cells were then incubated with the antibody (ab30682, 1µg/ml) overnight at +4°C. The secondary antibody (green) was Alexa Fluor<sup>®</sup> 488 goat anti-rabbit IgG (H+L) used at a 1/1000 dilution for 1h. Alexa Fluor<sup>®</sup> 594 WGA was used to label plasma membranes (red) at a 1/200 dilution for 1h. DAPI was used to stain the cell nuclei (blue) at a concentration of 1.43µM.



**All lanes :** Anti-SREBP2 antibody (ab30682) at 1/200 dilution

**Lane 1 :** Human fibroblast cell lysate

**Lane 2 :** Rat brown fat homogenate

**Lane 3 :** Rat testis supernatant

Lysates/proteins at 60 µg per lane.

**Predicted band size:** 126 kDa

Observed bands 126 kDa, 55kDa (cleaved form)

**Please note:** All products are "FOR RESEARCH USE ONLY. NOT FOR USE IN DIAGNOSTIC PROCEDURES"

#### Our Abpromise to you: Quality guaranteed and expert technical support

---

- Replacement or refund for products not performing as stated on the datasheet
- Valid for 12 months from date of delivery
- Response to your inquiry within 24 hours
- We provide support in Chinese, English, French, German, Japanese and Spanish
- Extensive multi-media technical resources to help you
- We investigate all quality concerns to ensure our products perform to the highest standards

If the product does not perform as described on this datasheet, we will offer a refund or replacement. For full details of the Abpromise, please visit <https://www.abcam.cn/abpromise> or contact our technical team.

#### Terms and conditions

---

- Guarantee only valid for products bought direct from Abcam or one of our authorized distributors