

### Anti-SREBP2 antibody ab28482

★☆☆☆☆ **1 Abreviews** **24 References** **3 图像**

#### 概述

产品名称	Anti-SREBP2抗体
描述	兔多克隆抗体to SREBP2
宿主	Rabbit
特异性	ab28482 recognises Sterol regulatory element-binding protein 2 (SREBP 2)
经测试应用	<b>适用于:</b> ICC/IF
种属反应性	<b>与反应:</b> Rat, Human <b>预测可用于:</b> Guinea pig, Cow, Dog, Pig, Chimpanzee 
免疫原	Synthetic peptide corresponding to Rat SREBP2 aa 876-890. Sequence: AISWLQGDDAAVRSH <div>  <a href="#">Run BLAST with</a>  <a href="#">Run BLAST with</a> </div>
阳性对照	ICC/IF: Human HeLa cells, rat PC12 and L6 cells.
常规说明	<p>The Life Science industry has been in the grips of a reproducibility crisis for a number of years. Abcam is leading the way in addressing this with our range of recombinant monoclonal antibodies and knockout edited cell lines for gold-standard validation. Please check that this product meets your needs before purchasing.</p> <p>If you have any questions, special requirements or concerns, please send us an inquiry and/or contact our Support team ahead of purchase. Recommended alternatives for this product can be found below, along with publications, customer reviews and Q&amp;As</p>

#### 性能

形式	Liquid
存放说明	Shipped at 4°C. Upon delivery aliquot and store at -20°C. Avoid freeze / thaw cycles.
存储溶液	Preservative: 0.05% Sodium azide Constituents: PBS, 0.1% BSA
纯度	Immunogen affinity purified
克隆	多克隆
同种型	IgG

## 应用

### The Abpromise guarantee

**Abpromise™** 承诺保证使用 ab28482 于以下的经测试应用

“应用说明”部分 下显示的仅为推荐的起始稀释度; 实际最佳的稀释度/浓度应由使用者检定。

应用	Ab 评论	说明
ICC/IF		1/20 - 1/200.

## 靶标

### 功能

Transcriptional activator required for lipid homeostasis. Regulates transcription of the LDL receptor gene as well as the cholesterol and to a lesser degree the fatty acid synthesis pathway (By similarity). Binds the sterol regulatory element 1 (SRE-1) (5'-ATCACCCAC-3') found in the flanking region of the LDRL and HMG-CoA synthase genes.

### 组织特异性

Ubiquitously expressed in adult and fetal tissues.

### 序列相似性

Belongs to the SREBP family.  
Contains 1 basic helix-loop-helix (bHLH) domain.

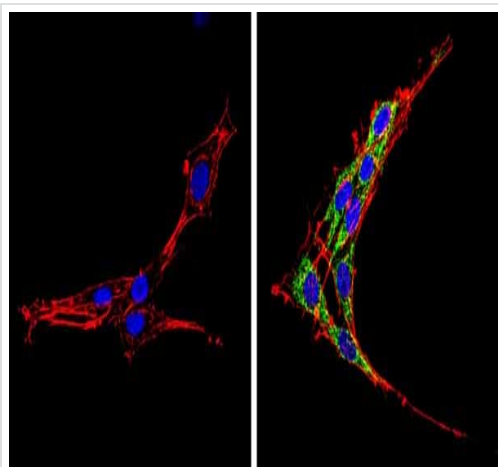
### 翻译后修饰

At low cholesterol the SCAP/SREBP complex is recruited into COPII vesicles for export from the ER. In the Golgi complex SREBPs are cleaved sequentially by site-1 and site-2 protease. The first cleavage by site-1 protease occurs within the luminal loop, the second cleavage by site-2 protease occurs within the first transmembrane domain and releases the transcription factor from the Golgi membrane. Apoptosis triggers cleavage by the cysteine proteases caspase-3 and caspase-7.

### 细胞定位

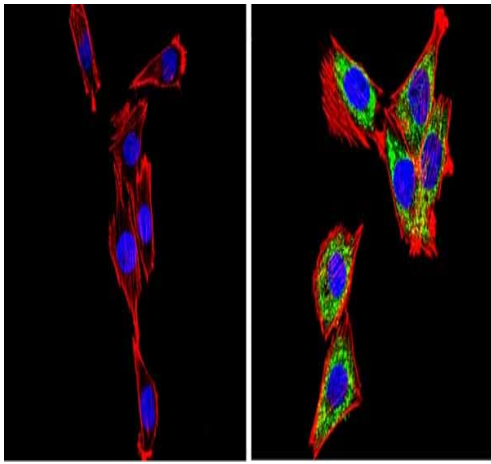
Nucleus and Endoplasmic reticulum membrane. Golgi apparatus membrane. Cytoplasmic vesicle > COPII-coated vesicle membrane. Moves from the endoplasmic reticulum to the Golgi in the absence of sterols.

## 图片



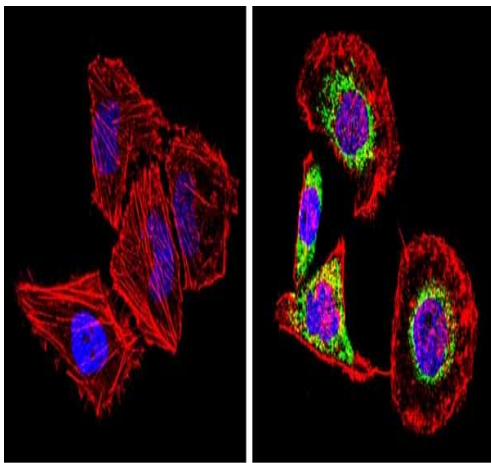
Immunocytochemistry/ Immunofluorescence - Anti-SREBP2 antibody (ab28482)

Immunocytochemistry/Immunofluorescent analysis of SREBP2 (green) showing staining in the cytoplasm of Rat PC12 cells. Formalin-fixed cells were permeabilized with 0.1% Triton X-100 in TBS for 5-10 minutes and blocked with 3% BSA-PBS for 30 minutes at room temperature. Cells were probed with ab28482 in 3% BSA-PBS at a dilution of 1:100 and incubated overnight at 4°C in a humidified chamber. Cells were washed with PBST and incubated with a DyLight-conjugated secondary antibody in PBS at room temperature in the dark. F-actin (red) was stained with a fluorescent red phalloidin and nuclei (blue) were stained with Hoechst or DAPI. Images were taken at a magnification of 60x.



Immunocytochemistry/ Immunofluorescence - Anti-SREBP2 antibody (ab28482)

Immunocytochemistry/Immunofluorescent analysis of SREBP2 (green) showing staining in the cytoplasm of rat L6 cells. Formalin-fixed cells were permeabilized with 0.1% Triton X-100 in TBS for 5-10 minutes and blocked with 3% BSA-PBS for 30 minutes at room temperature. Cells were probed with ab28482 in 3% BSA-PBS at a dilution of 1:100 and incubated overnight at 4°C in a humidified chamber. Cells were washed with PBST and incubated with a DyLight-conjugated secondary antibody in PBS at room temperature in the dark. F-actin (red) was stained with a fluorescent red phalloidin and nuclei (blue) were stained with Hoechst or DAPI. Images were taken at a magnification of 60x.



Immunocytochemistry/ Immunofluorescence - Anti-SREBP2 antibody (ab28482)

Immunocytochemistry/Immunofluorescent analysis of SREBP2 (green) showing staining in the cytoplasm of HeLa cells. Formalin-fixed cells were permeabilized with 0.1% Triton X-100 in TBS for 5-10 minutes and blocked with 3% BSA-PBS for 30 minutes at room temperature. Cells were probed with ab28482 in 3% BSA-PBS at a dilution of 1:100 and incubated overnight at 4°C in a humidified chamber. Cells were washed with PBST and incubated with a DyLight-conjugated secondary antibody in PBS at room temperature in the dark. F-actin (red) was stained with a fluorescent red phalloidin and nuclei (blue) were stained with Hoechst or DAPI. Images were taken at a magnification of 60x.

**Please note:** All products are "FOR RESEARCH USE ONLY. NOT FOR USE IN DIAGNOSTIC PROCEDURES"

### Our Abpromise to you: Quality guaranteed and expert technical support

- Replacement or refund for products not performing as stated on the datasheet
- Valid for 12 months from date of delivery
- Response to your inquiry within 24 hours
- We provide support in Chinese, English, French, German, Japanese and Spanish
- Extensive multi-media technical resources to help you
- We investigate all quality concerns to ensure our products perform to the highest standards

If the product does not perform as described on this datasheet, we will offer a refund or replacement. For full details of the Abpromise, please visit <https://www.abcam.cn/abpromise> or contact our technical team.

## Terms and conditions

---

- Guarantee only valid for products bought direct from Abcam or one of our authorized distributors