


Anti-SOCS2 antibody ab66733

1 图像

概述

产品名称	Anti-SOCS2抗体
描述	兔多克隆抗体to SOCS2
宿主	Rabbit
经测试应用	适用于: WB
种属反应性	与反应: Mouse, Human 预测可用于: Rat, Cow, Pig, Chimpanzee 
免疫原	Synthetic peptide corresponding to Human SOCS2 aa 150 to the C-terminus (C terminal) conjugated to keyhole limpet haemocyanin. (Peptide available as ab66732)
阳性对照	This antibody gave a positive signal in the following whole cell lysates: HepG2, HeLa, SW480, Raji, MOLT4 and in Mouse Thymus tissue lysate
常规说明	<p>The Life Science industry has been in the grips of a reproducibility crisis for a number of years. Abcam is leading the way in addressing this with our range of recombinant monoclonal antibodies and knockout edited cell lines for gold-standard validation. Please check that this product meets your needs before purchasing.</p> <p>If you have any questions, special requirements or concerns, please send us an inquiry and/or contact our Support team ahead of purchase. Recommended alternatives for this product can be found below, along with publications, customer reviews and Q&As</p>

性能

形式	Liquid
存放说明	Shipped at 4°C. Store at +4°C short term (1-2 weeks). Upon delivery aliquot. Store at -20°C or -80°C. Avoid freeze / thaw cycle.
存储溶液	pH: 7.40 Preservative: 0.02% Sodium azide Constituent: PBS

Batches of this product that have a concentration < 1mg/ml may have BSA added as a stabilising agent. If you would like information about the formulation of a specific lot, please contact our scientific support team who will be happy to help.

纯度	Immunogen affinity purified
克隆	多克隆
同种型	IgG

应用

The Abpromise guarantee **Abpromise™** 承诺保证使用 ab66733 于以下的经测试应用

“应用说明”部分下显示的仅为推荐的起始稀释度；实际最佳的稀释度/浓度应由使用者检定。

应用	Ab评论	说明
WB		Use a concentration of 1 µg/ml. Detects a band of approximately 22 kDa (predicted molecular weight: 22 kDa).

靶标

功能 SOCS family proteins form part of a classical negative feedback system that regulates cytokine signal transduction. SOCS2 appears to be a negative regulator in the growth hormone/IGF1 signaling pathway. Probable substrate recognition component of a SCF-like ECS (Elongin BC-CUL2/5-SOCS-box protein) E3 ubiquitin-protein ligase complex which mediates the ubiquitination and subsequent proteasomal degradation of target proteins.

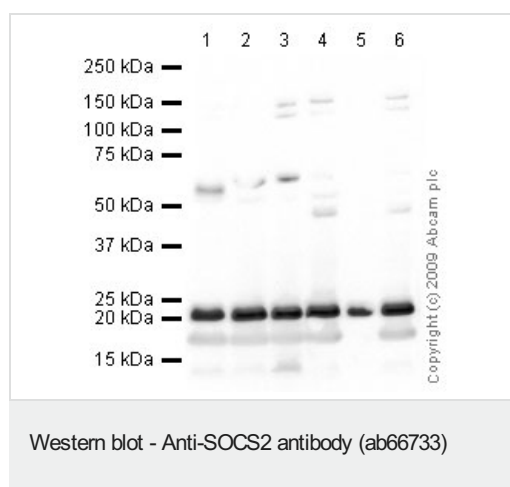
组织特异性 High expression in heart, placenta, lung, kidney and prostate.

通路 Protein modification; protein ubiquitination.

序列相似性 Contains 1 SH2 domain.
Contains 1 SOCS box domain.

结构域 The SOCS box domain mediates the interaction with the Elongin BC complex, an adapter module in different E3 ubiquitin ligase complexes.

图片



All lanes : Anti-SOCS2 antibody (ab66733) at 1 µg/ml

Lane 1 : HepG2 (Human hepatocellular liver carcinoma cell line) Whole Cell Lysate

Lane 2 : HeLa (Human epithelial carcinoma cell line) Whole Cell Lysate

Lane 3 : SW480 whole cell lysate ([ab3957](#))

Lane 4 : Raji whole cell lysate ([ab30124](#))

Lane 5 : Mouse thymus tissue lysate - total protein ([ab29285](#))

Lane 6 : MOLT4 (Human acute lymphoblastic leukemia cell line) Whole Cell Lysate

Lysates/proteins at 10 µg per lane.

Secondary

All lanes : Goat polyclonal to Rabbit IgG - H&L - Pre-Adsorbed (HRP) at 1/3000 dilution

Performed under reducing conditions.

Predicted band size: 22 kDa

Observed band size: 22 kDa

Please note: All products are "FOR RESEARCH USE ONLY. NOT FOR USE IN DIAGNOSTIC PROCEDURES"

Our Abpromise to you: Quality guaranteed and expert technical support

- Replacement or refund for products not performing as stated on the datasheet
- Valid for 12 months from date of delivery
- Response to your inquiry within 24 hours

- We provide support in Chinese, English, French, German, Japanese and Spanish
- Extensive multi-media technical resources to help you
- We investigate all quality concerns to ensure our products perform to the highest standards

If the product does not perform as described on this datasheet, we will offer a refund or replacement. For full details of the Abpromise, please visit <https://www.abcam.cn/abpromise> or contact our technical team.

Terms and conditions

- Guarantee only valid for products bought direct from Abcam or one of our authorized distributors