


Anti-SNF2L antibody ab37003

★★★★☆ [2 Abreviews](#) [9 References](#) [3 图像](#)

概述

产品名称	Anti-SNF2L抗体
描述	兔多克隆抗体to SNF2L
宿主	Rabbit
特异性	From Jan 2024, QC testing of replenishment batches of this polyclonal changed. All tested and expected application and reactive species combinations are still covered by our Abcam product promise. However, we no longer test all applications. For more information on a specific batch, please contact our Scientific Support who will be happy to help.
经测试应用	适用于: IP, WB, ICC/IF
种属反应性	与反应: Human 预测可用于: Mouse, Drosophila melanogaster, Zebrafish 
免疫原	Synthetic peptide within Human SNF2L aa 850-950 conjugated to keyhole limpet haemocyanin. The exact sequence is proprietary. (Peptide available as ab38108 , ab38109)
常规说明	<p>The Life Science industry has been in the grips of a reproducibility crisis for a number of years. Abcam is leading the way in addressing this with our range of recombinant monoclonal antibodies and knockout edited cell lines for gold-standard validation. Please check that this product meets your needs before purchasing.</p> <p>If you have any questions, special requirements or concerns, please send us an inquiry and/or contact our Support team ahead of purchase. Recommended alternatives for this product can be found below, along with publications, customer reviews and Q&As</p>

性能

形式	Liquid
存放说明	Shipped at 4°C. Store at +4°C short term (1-2 weeks). Upon delivery aliquot. Store at -20°C or -80°C. Avoid freeze / thaw cycle.
存储溶液	pH: 7.40 Preservative: 0.02% Sodium azide Constituent: PBS

Batches of this product that have a concentration < 1mg/ml may have BSA added as a stabilising agent. If you would like information about the formulation of a specific lot, please contact our

scientific support team who will be happy to help.

纯度	Immunogen affinity purified
克隆	多克隆
同种型	IgG

应用

The Abpromise guarantee **Abpromise™**承诺保证使用ab37003于以下的经测试应用

“应用说明”部分 下显示的仅为推荐的起始稀释度;实际最佳的稀释度/浓度应由使用者检定。

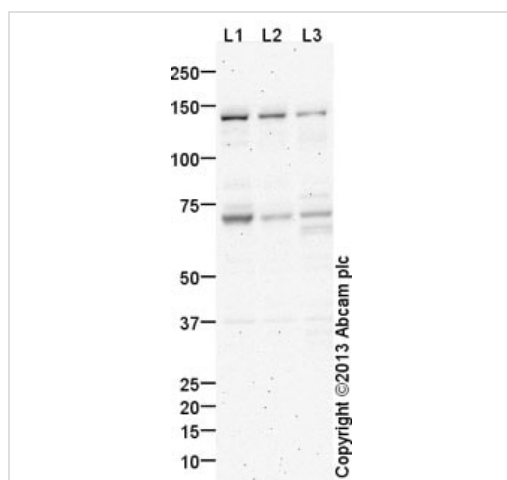
应用	Ab评论	说明
IP		Use at an assay dependent concentration.
WB	★★★★★ (2)	Use a concentration of 1 µg/ml. Detects a band of approximately 140 kDa (predicted molecular weight: 123 kDa). Abcam recommends using 3% milk as the blocking agent.
ICC/IF		Use a concentration of 1 µg/ml.

靶标

相关性 The protein encoded by this gene is a member of the SWI/SNF family of proteins. Members of this family have helicase and ATPase activities and are thought to regulate transcription of certain genes by altering the chromatin structure around those genes. Two transcript variants encoding different isoforms have been found for this gene.

细胞定位 Nuclear

图片



Western blot - Anti-SNF2L antibody (ab37003)

All lanes : Anti-SNF2L antibody (ab37003) at 1 µg/ml (blocked with 3% milk)

Lane 1 : Jurkat nuclear extract lysate ([ab14844](#))

Lane 2 : HEK293 (Human embryonic kidney cell line) Nuclear Lysate

Lane 3 : SHSY5Y Whole Cell Lysate

Lysates/proteins at 20 µg per lane.

Secondary

All lanes : Goat Anti-Rabbit IgG H&L (HRP) ([ab97051](#)) at 1/10000 dilution

Developed using the ECL technique.

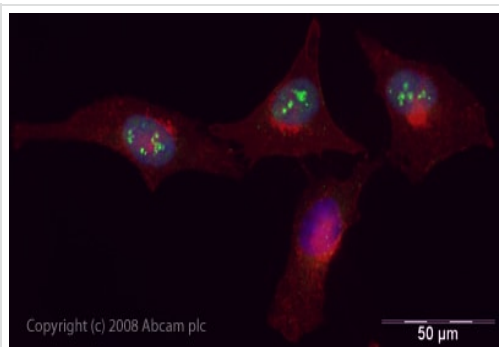
Performed under reducing conditions.

Predicted band size: 123 kDa

Observed band size: 140 kDa

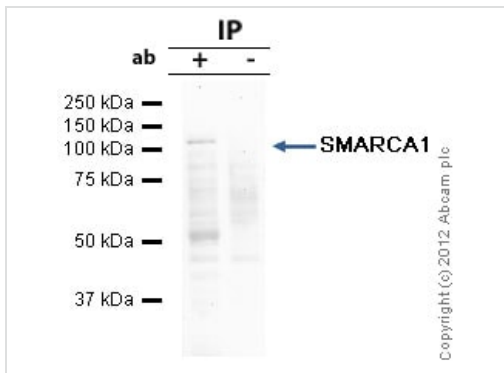
Additional bands at: 70 kDa. We are unsure as to the identity of these extra bands.

Exposure time: 16 minutes



Immunocytochemistry/ Immunofluorescence - Anti-SNF2L antibody (ab37003)

ICC/IF image of ab37003 stained human HeLa cells. The cells were PFA fixed (10 min), permeabilised in PBS-T (20 min) and incubated with the antibody (ab37003, 5µg/ml) for 1h at room temperature. 1%BSA / 10% normal goat serum / 0.3M glycine was used to quench autofluorescence and block non-specific protein-protein interactions. The secondary antibody (green) was Alexa Fluor® 488 goat anti-rabbit IgG (H+L) used at a 1/1000 dilution for 1h. Alexa Fluor® 594 WGA was used to label plasma membranes (red). DAPI was used to stain the cell nuclei (blue).



Immunoprecipitation - Anti-SNF2L antibody (ab37003)

SNF2L was immunoprecipitated using 0.5mg Jurkat whole cell extract, 5µg of Rabbit polyclonal to SNF2L and 50µl of protein G magnetic beads (+). No antibody was added to the control (-).

The antibody was incubated under agitation with Protein G beads for 10min, Jurkat whole cell extract lysate diluted in RIPA buffer was added to each sample and incubated for a further 10min under agitation.

Proteins were eluted by addition of 40µl SDS loading buffer and incubated for 10min at 70°C; 10µl of each sample was separated on a SDS PAGE gel, transferred to a nitrocellulose membrane, blocked with 5% BSA and probed with ab37003.

Secondary: Mouse monoclonal [SB62a] Secondary Antibody to Rabbit IgG light chain (HRP) ([ab99697](#)).

Band: 105kDa: SNF2L.

Please note: All products are "FOR RESEARCH USE ONLY. NOT FOR USE IN DIAGNOSTIC PROCEDURES"

Our Abpromise to you: Quality guaranteed and expert technical support

- Replacement or refund for products not performing as stated on the datasheet

- Valid for 12 months from date of delivery
- Response to your inquiry within 24 hours

- We provide support in Chinese, English, French, German, Japanese and Spanish
- Extensive multi-media technical resources to help you
- We investigate all quality concerns to ensure our products perform to the highest standards

If the product does not perform as described on this datasheet, we will offer a refund or replacement. For full details of the Abpromise, please visit <https://www.abcam.cn/abpromise> or contact our technical team.

Terms and conditions

- Guarantee only valid for products bought direct from Abcam or one of our authorized distributors