




Anti-SNAIL + SLUG antibody ab167609

19 References 3 图像

概述

产品名称	Anti-SNAIL + SLUG抗体
描述	小鼠多克隆抗体to SNAIL + SLUG
宿主	Mouse
经测试应用	适用于: WB, ICC/IF
种属反应性	与反应: Human, Recombinant fragment 预测可用于: Chimpanzee, Rhesus monkey, Gorilla, Orangutan 
免疫原	<p>Recombinant full length protein aa 1-264. Corresponding to Human SNAIL.</p> <p>Sequence:</p> <p>MPRSFLVRKPSDPNRKPNYSELQDSNPEFTFQQPYDQAHLLA AIPPPEIL NPTASLPMLIWDSVLAPQAQPIAWASLRLQESPRVAELTSLS DEDSGKGS QPPSPSPAPSSFSSSTSVSSLEAEYAAFPGLGQVPKQLAQL SEAKDLQA RKAFNCKYCNKEYLSLGALKMHRSHTLPCVCGTCGKAFSRP WLLQGHVR THTGEKPFSCPHCSRAFADRSNLRAHLQTHSDVKKYQCQACA RTFSRMSL LHKHQESGCSGCPR</p> <p>Database link: <a href="#">NP_005976.2</a>  <a href="#">Run BLAST with</a>  <a href="#">Run BLAST with</a></p>
阳性对照	SNAIL transfected 293T cell lysate. HeLa cells.
常规说明	<p>The Life Science industry has been in the grips of a reproducibility crisis for a number of years. Abcam is leading the way in addressing this with our range of recombinant monoclonal antibodies and knockout edited cell lines for gold-standard validation. Please check that this product meets your needs before purchasing.</p> <p>If you have any questions, special requirements or concerns, please send us an inquiry and/or contact our Support team ahead of purchase. Recommended alternatives for this product can be found below, along with publications, customer reviews and Q&amp;As</p>

性能

形式	Liquid
存放说明	Shipped at 4°C. Store at +4°C short term (1-2 weeks). Upon delivery aliquot. Store at -20°C long term.
存储溶液	pH: 7.4 Constituent: 99% PBS
纯度	Protein A purified
克隆	多克隆
同种型	IgG

应用

The Abpromise guarantee

Abpromise™承诺保证使用ab167609于以下的经测试应用

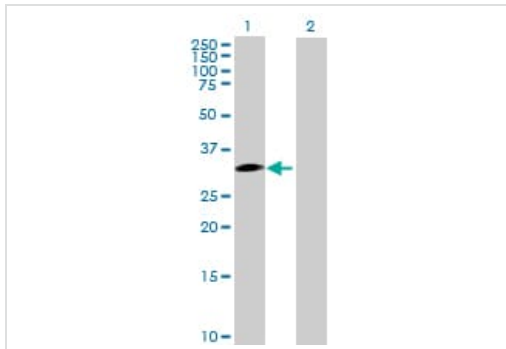
“应用说明”部分 下显示的仅为推荐的起始稀释度;实际最佳的稀释度/浓度应由使用者检定。

应用	Ab评论	说明
WB		Use a concentration of 1 µg/ml. Predicted molecular weight: 29 kDa.
ICC/IF		Use a concentration of 10 µg/ml.

靶标

相关性	<p>Function: SNAIL is involved in the epithelial to mesenchymal transition (EMT) and formation and maintenance of embryonic mesoderm (By similarity). Binds to 3 E-boxes of the E-cadherin gene promoter and represses its transcription. SLUG is a transcriptional repressor, involved in the generation and migration of neural crest cells. PTM: SNAIL is phosphorylated by GSK3B. Once phosphorylated, it becomes a target for BTRC ubiquitination. Ubiquitinated on Lys-98, Lys-137 and Lys-146 by FBXL14 and BTRC leading to degradation. BTRC-triggered ubiquitination requires previous GSK3B-mediated SNAI1 phosphorylation. Similarity: Both SNAIL and SLUG belong to the snail C2H2-type zinc-finger protein family. Tissue specificity: SNAIL is expressed in a variety of tissues with the highest expression in kidney. Expressed in mesenchymal and epithelial cell lines. SLUG is expressed in placenta and adult heart, pancreas, liver, kidney and skeletal muscle.</p>
细胞定位	<p>Slug is generally nuclear, while Snail is known to be both cytoplasmic and nuclear. Once phosphorylated (probably on Ser-107, Ser-111, Ser-115 and Ser-119) snail is exported from the nucleus to the cytoplasm where subsequent phosphorylation of the destruction motif and ubiquitination involving BTRC occurs.</p>

图片



Western blot - Anti-SNAIL + SLUG antibody  
(ab167609)

**All lanes :** Anti-SNAIL + SLUG antibody (ab167609) at 1 µg/ml

**Lane 1 :** SNAIL transfected 293T cell lysate

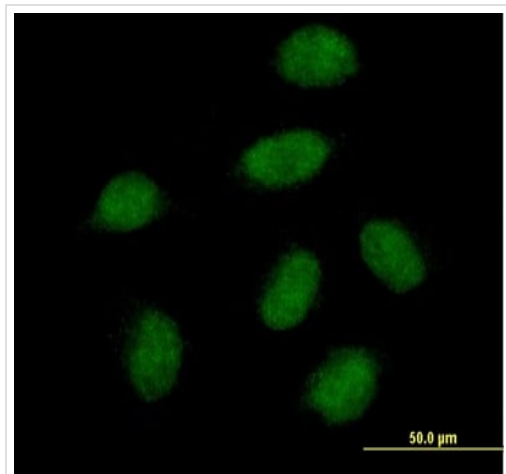
**Lane 2 :** Non-transfected 293T cell lysate

Lysates/proteins at 15 µl per lane.

#### Secondary

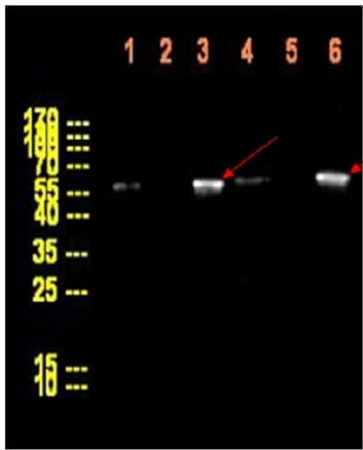
**All lanes :** Goat anti-Mouse IgG

**Predicted band size:** 29 kDa



Immunocytochemistry/ Immunofluorescence - Anti-SNAIL + SLUG antibody (ab167609)

Immunofluorescent analysis of HeLa cells labeling SNAIL with ab167609 at 10 µg/ml.



Western blot - Anti-SNAIL + SLUG antibody  
(ab167609)

**Lane 1 :** Monoclonal Mouse anti-GST at 1 µg

**Lanes 2 & 5 :** Milk at 5 %

**Lane 3 :** Anti-SNAIL + SLUG antibody (ab167609) at 1 µg

**Lane 4 :** Monoclonal Mouse anti-GST at 1 µg/ml

**Lane 6 :** Anti-SNAIL + SLUG antibody (ab167609) at 1 µg/ml

**Lanes 1-3 :** SNAIL-GST fusion protein

**Lanes 4-6 :** SLUG-GST-fusion protein

Lysates/proteins at 0.2 µg per lane.

## Secondary

**All lanes :** HRP conjugated Goat anti-mouse at 1/5000 dilution

**Predicted band size:** 29 kDa

**Additional bands at:** 55.5 kDa (possible tagged protein), 56.4 kDa (possible tagged protein)

**Exposure time:** 90 seconds

Substrate: Perkin Elmer

**Please note:** All products are "FOR RESEARCH USE ONLY. NOT FOR USE IN DIAGNOSTIC PROCEDURES"

## Our Abpromise to you: Quality guaranteed and expert technical support

- Replacement or refund for products not performing as stated on the datasheet
- Valid for 12 months from date of delivery
- Response to your inquiry within 24 hours
- We provide support in Chinese, English, French, German, Japanese and Spanish
- Extensive multi-media technical resources to help you
- We investigate all quality concerns to ensure our products perform to the highest standards

If the product does not perform as described on this datasheet, we will offer a refund or replacement. For full details of the Abpromise, please visit <https://www.abcam.cn/abpromise> or contact our technical team.

## Terms and conditions

- Guarantee only valid for products bought direct from Abcam or one of our authorized distributors