


Anti-SMNDC1 antibody ab227952

5 图像

概述

产品名称	Anti-SMNDC1抗体
描述	兔多克隆抗体to SMNDC1
宿主	Rabbit
经测试应用	适用于: WB, IHC-P, ICC/IF
种属反应性	与反应: Mouse, Human 预测可用于: Rat, Cow, Pig, Rhesus monkey 
免疫原	Recombinant fragment within Human SMNDC1 (internal sequence). The exact sequence is proprietary. Database link: O75940
阳性对照	IHC-P: Human lung cancer tissue; C2C12 and SNU1 xenograft tissues. WB: IMR32 whole cell lysate. ICC/IF: MCF7 cells.
常规说明	<p>The Life Science industry has been in the grips of a reproducibility crisis for a number of years. Abcam is leading the way in addressing this with our range of recombinant monoclonal antibodies and knockout edited cell lines for gold-standard validation. Please check that this product meets your needs before purchasing.</p> <p>If you have any questions, special requirements or concerns, please send us an inquiry and/or contact our Support team ahead of purchase. Recommended alternatives for this product can be found below, along with publications, customer reviews and Q&As</p>

性能

形式	Liquid
存放说明	Shipped at 4°C. Store at +4°C short term (1-2 weeks). Upon delivery aliquot. Store at -20°C long term. Avoid freeze / thaw cycle.
存储溶液	pH: 7.00 Preservative: 0.01% Thimerosal (merthiolate) Constituents: 1.21% Tris, 0.75% Glycine, 20% Glycerol (glycerin, glycerine)
纯度	Immunogen affinity purified
克隆	多克隆
同种型	IgG

应用

The Abpromise guarantee **Abpromise™**承诺保证使用ab227952于以下的经测试应用

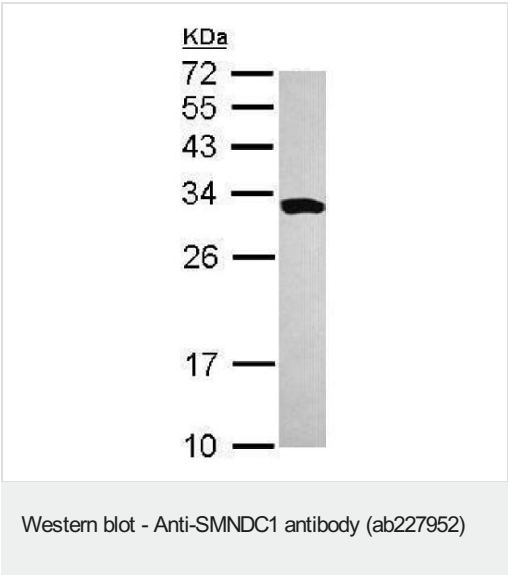
“应用说明”部分 下显示的仅为推荐的起始稀释度;实际最佳的稀释度/浓度应由使用者检定。

应用	Ab评论	说明
WB		1/500 - 1/3000. Predicted molecular weight: 27 kDa.
IHC-P		1/100 - 1/1000.
ICC/IF		1/100 - 1/1000.

靶标

功能	Necessary for spliceosome assembly. Overexpression causes apoptosis.
组织特异性	Detected at intermediate levels in skeletal muscle, and at low levels in heart and pancreas.
序列相似性	Belongs to the SMN family. Contains 1 Tudor domain.
细胞定位	Nucleus speckle. Nucleus > Cajal body. Detected in nuclear speckles containing snRNP and in Cajal (coiled) bodies.

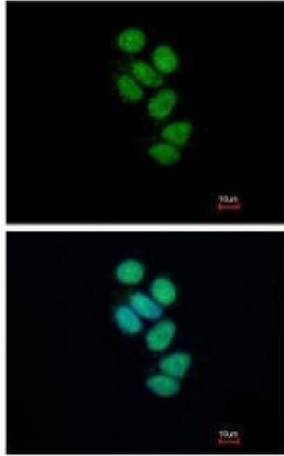
图片



Anti-SMNDC1 antibody (ab227952) at 1/1000 dilution + IMR32
(human neuroblast cell line) whole cell lysate at 30 µg

Predicted band size: 27 kDa

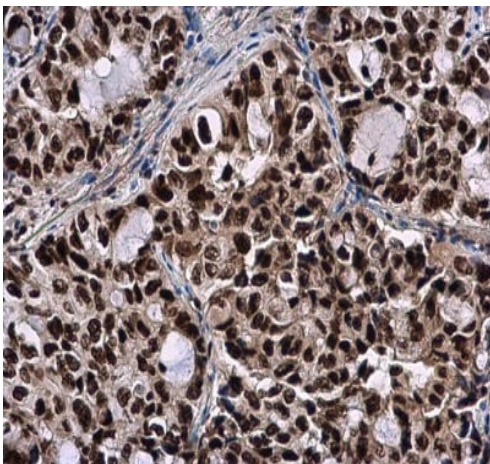
12% SDS-PAGE gel.



Immunocytochemistry/ Immunofluorescence - Anti-SMNDC1 antibody (ab227952)

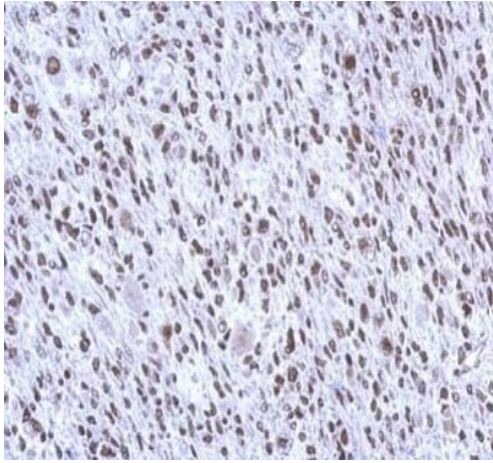
Paraformaldehyde-fixed MCF7 (human breast adenocarcinoma cell line) cells stained for SMNDC1 (green) using ab227952 at 1/500 dilution in ICC/IF.

Nuclear counter stain: Hoechst 33342 (blue).



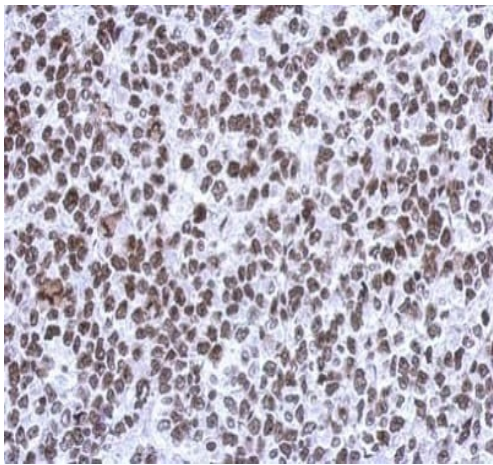
Immunohistochemistry (Formalin/PFA-fixed paraffin-embedded sections) - Anti-SMNDC1 antibody (ab227952)

Paraffin-embedded human lung cancer tissue stained for SMNDC1 using ab227952 at 1/500 dilution in immunohistochemical analysis.



Paraffin-embedded C2C12 xenograft tissue stained for SMNDC1 using ab227952 at 1/500 dilution in immunohistochemical analysis.

Immunohistochemistry (Formalin/PFA-fixed paraffin-embedded sections) - Anti-SMNDC1 antibody (ab227952)



Paraffin-embedded SNU1 xenograft tissue stained for SMNDC1 using ab227952 at 1/500 dilution in immunohistochemical analysis.

Immunohistochemistry (Formalin/PFA-fixed paraffin-embedded sections) - Anti-SMNDC1 antibody (ab227952)

Please note: All products are "FOR RESEARCH USE ONLY. NOT FOR USE IN DIAGNOSTIC PROCEDURES"

Our Abpromise to you: Quality guaranteed and expert technical support

- Replacement or refund for products not performing as stated on the datasheet

- Valid for 12 months from date of delivery
- Response to your inquiry within 24 hours
- We provide support in Chinese, English, French, German, Japanese and Spanish
- Extensive multi-media technical resources to help you
- We investigate all quality concerns to ensure our products perform to the highest standards

If the product does not perform as described on this datasheet, we will offer a refund or replacement. For full details of the Abpromise, please visit <https://www.abcam.cn/abpromise> or contact our technical team.

Terms and conditions

- Guarantee only valid for products bought direct from Abcam or one of our authorized distributors