


Anti-SMC1A antibody ab9262

★★★★★ [6 Abreviews](#) [40 References](#) [4 图像](#)

概述

产品名称	Anti-SMC1A抗体
描述	兔多克隆抗体to SMC1A
宿主	Rabbit
经测试应用	适用于: IHC-P, IP, WB
种属反应性	与反应: Mouse, Human 预测可用于: Rat, Cow 
免疫原	Synthetic peptide within Human SMC1A aa 1133-1233 conjugated to keyhole limpet haemocyanin. The exact sequence is proprietary. Database link: Q14683
阳性对照	WB: HeLa, 293T and NIH3T3 whole cell lysate. IHC-P: Human ovarian cancer tissue, mouse colon cancer tissue CT26. IP: HeLa whole cell lysate.
常规说明	<p>The Life Science industry has been in the grips of a reproducibility crisis for a number of years. Abcam is leading the way in addressing this with our range of recombinant monoclonal antibodies and knockout edited cell lines for gold-standard validation. Please check that this product meets your needs before purchasing.</p> <p>If you have any questions, special requirements or concerns, please send us an inquiry and/or contact our Support team ahead of purchase. Recommended alternatives for this product can be found below, along with publications, customer reviews and Q&As</p>

性能

形式	Liquid
存放说明	Shipped at 4°C. Store at +4°C short term (1-2 weeks). Upon delivery aliquot. Store at -20°C. Avoid freeze / thaw cycle.
存储溶液	pH: 7 Preservative: 0.1% Sodium azide Constituents: 0.021% PBS, 1.764% Sodium citrate, 1.815% Tris
纯度	Immunogen affinity purified
纯化说明	Antibodies were affinity purified using the peptide immobilized on solid support. Antibody concentration was determined by extinction coefficient: absorbance at 280nm of 1.4 equals 1.0 mg of IgG.

克隆

多克隆

同种型

IgG

应用

The Abpromise guarantee **Abpromise™**承诺保证使用ab9262于以下的经测试应用

“应用说明”部分 下显示的仅为推荐的起始稀释度;实际最佳的稀释度/浓度应由使用者检定。

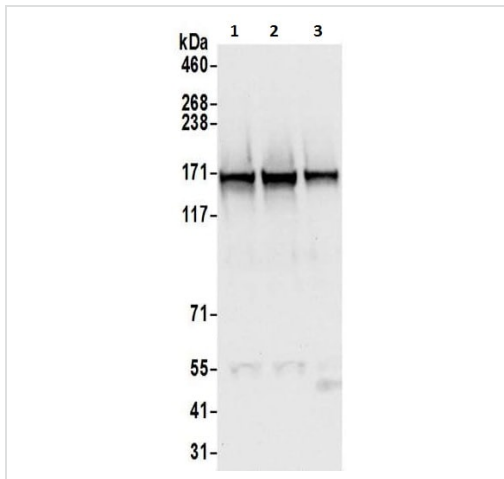
应用	Ab评论	说明
IHC-P		1/500 - 1/2000. Perform heat mediated antigen retrieval with citrate buffer pH 6 before commencing with IHC staining protocol.
IP		Use at 1-4 µg/mg of lysate.
WB	★★★★★ (5)	1/1000 - 1/10000. Detects a band of approximately 160 kDa (predicted molecular weight: 143 kDa).

靶标

功能	Involved in chromosome cohesion during cell cycle and in DNA repair. Central component of cohesin complex. The cohesin complex is required for the cohesion of sister chromatids after DNA replication. The cohesin complex apparently forms a large proteinaceous ring within which sister chromatids can be trapped. At anaphase, the complex is cleaved and dissociates from chromatin, allowing sister chromatids to segregate. The cohesin complex may also play a role in spindle pole assembly during mitosis. Involved in DNA repair via its interaction with BRCA1 and its related phosphorylation by ATM, or via its phosphorylation by ATR. Works as a downstream effector both in the ATM/NBS1 branch and in the ATR/MSH2 branch of S-phase checkpoint.
疾病相关	Defects in SMC1A are the cause of Cornelia de Lange syndrome type 2 (CDLS2) [MIM:300590]; also known as Cornelia de Lange syndrome X-linked. CDLS is a clinically heterogeneous developmental disorder associated with malformations affecting multiple systems. CDLS is characterized by facial dysmorphisms, abnormal hands and feet, growth delay, cognitive retardation and various other malformations including gastroesophageal dysfunction and cardiac, ophthalmologic and genitourinary anomalies.
序列相似性	Belongs to the SMC family. SMC1 subfamily.
结构域	The flexible hinge domain, which separates the large intramolecular coiled coil regions, allows the heterotypic interaction with the corresponding domain of SMC3, forming a V-shaped heterodimer. The two heads of the heterodimer are then connected by different ends of the cleavable RAD21 protein, forming a ring structure.
翻译后修饰	Phosphorylated by ATM upon ionizing radiation in a NBS1-dependent manner. Phosphorylated by ATR upon DNA methylation in a MSH2/MSH6-dependent manner. Phosphorylation of Ser-957 and Ser-966 activates it and is required for S-phase checkpoint activation.
细胞定位	Nucleus. Chromosome. Chromosome > centromere > kinetochore. Associates with chromatin. Before prophase it is scattered along chromosome arms. During prophase, most of cohesin complexes dissociate from chromatin probably because of phosphorylation by PLK, except at centromeres, where cohesin complexes remain. At anaphase, the RAD21 subunit of the cohesin complex is cleaved, leading to the dissociation of the complex from chromosomes, allowing chromosome separation. In germ cells, cohesin complex dissociates from chromatin at prophase

I, and may be replaced by a meiosis-specific cohesin complex. The phosphorylated form on Ser-957 and Ser-966 associates with chromatin during G1/S/G2 phases but not during M phase, suggesting that phosphorylation does not regulate cohesin function. Integral component of the functional centromere-kinetochore complex at the kinetochore region during mitosis.

图片



Western blot - Anti-SMC1A antibody (ab9262)

All lanes : Anti-SMC1A antibody (ab9262) at 0.1 µg/ml

Lane 1 : HeLa whole cell lysate

Lane 2 : 293T whole cell lysate

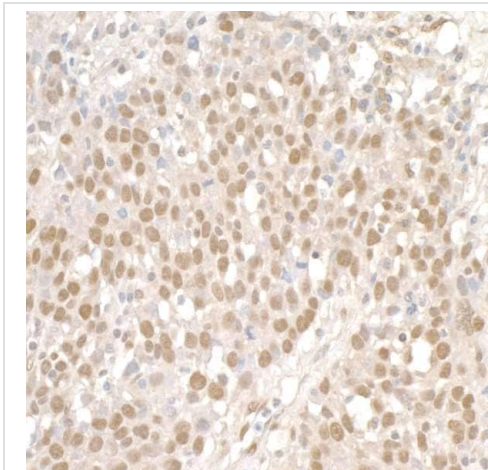
Lane 3 : NIH3T3 whole cell lysate

Lysates/proteins at 50 µg per lane.

Predicted band size: 143 kDa

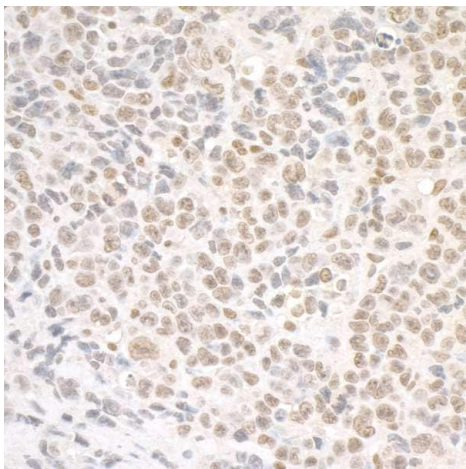
Exposure time: 3 seconds

Detection: Chemiluminescence.



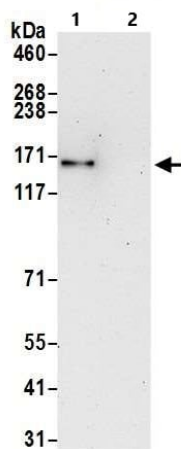
Immunohistochemistry (Formalin/PFA-fixed paraffin-embedded sections) - Anti-SMC1A antibody (ab9262)

Immunohistochemical analysis of formalin-fixed, paraffin-embedded human ovarian cancer tissue, labeling SMC1 with ab9262 at 0.2 µg/mL. Detection: DAB.



Immunohistochemistry (Formalin/PFA-fixed paraffin-embedded sections) - Anti-SMC1A antibody (ab9262)

Immunohistochemical analysis of formalin-fixed, paraffin-embedded mouse colon cancer tissue CT26, labeling SMC1 with ab9262 at 0.2 µg/mL. Detection: DAB.



Immunoprecipitation - Anti-SMC1A antibody (ab9262)

SMC1A was immunoprecipitated from 1 mg HeLa whole cell lysate with ab9262 at 6 µg per reaction. Western blot was performed on the immunoprecipitate using [ab243875](#) at 1/1000 dilution.

Lysates prepared using NETN lysis buffer.

Lane 1: ab9262 IP in HeLa whole cell lysate.

Lane 2: Control IgG in HeLa whole cell lysate.

Detection: Chemiluminescence.

Exposure time: 10 seconds.

Please note: All products are "FOR RESEARCH USE ONLY. NOT FOR USE IN DIAGNOSTIC PROCEDURES"

Our Abpromise to you: Quality guaranteed and expert technical support

- Replacement or refund for products not performing as stated on the datasheet
- Valid for 12 months from date of delivery
- Response to your inquiry within 24 hours

- We provide support in Chinese, English, French, German, Japanese and Spanish
- Extensive multi-media technical resources to help you
- We investigate all quality concerns to ensure our products perform to the highest standards

If the product does not perform as described on this datasheet, we will offer a refund or replacement. For full details of the Abpromise, please visit <https://www.abcam.cn/abpromise> or contact our technical team.

Terms and conditions

- Guarantee only valid for products bought direct from Abcam or one of our authorized distributors