

Anti-Smad2 + Smad3 antibody ab217553

[6 References](#) [4 图像](#)

概述

产品名称	Anti-Smad2 + Smad3抗体
描述	兔多克隆抗体to Smad2 + Smad3
宿主	Rabbit
经测试应用	适用于: WB, Flow Cyt, ICC/IF
种属反应性	与反应: Mouse, Rat, Human
免疫原	Synthetic peptide within Human Smad2 + Smad3 aa 30-80 conjugated to keyhole limpet haemocyanin. The exact sequence is proprietary. Database link: Q15796
阳性对照	Flow Cyt: HUVEC cells ICC/IF: HeLa cells WB: Mouse and Rat cerebrum, testis and kidney lysates, mouse heart, mouse skin, HUVEC cells, A549 cells, HeLa cells, HT1080 cells, A431 cell lysates
常规说明	<p>The Life Science industry has been in the grips of a reproducibility crisis for a number of years. Abcam is leading the way in addressing this with our range of recombinant monoclonal antibodies and knockout edited cell lines for gold-standard validation. Please check that this product meets your needs before purchasing.</p> <p>If you have any questions, special requirements or concerns, please send us an inquiry and/or contact our Support team ahead of purchase. Recommended alternatives for this product can be found below, along with publications, customer reviews and Q&As</p>

性能

形式	Liquid
存放说明	Shipped at 4°C. Store at +4°C short term (1-2 weeks). Upon delivery aliquot. Store at -20°C long term. Avoid freeze / thaw cycle.
存储溶液	pH: 7.40 Preservative: 0.02% Proclin 300 Constituents: 50% Glycerol (glycerin, glycerine), 1% BSA, 48.98% TBS, 1X Aqueous buffered solution
纯度	Protein A purified
克隆	多克隆

同种型

IgG

应用

The Abpromise guarantee

Abpromise™ 承诺保证使用 ab217553 于以下的经测试应用

“应用说明”部分 下显示的仅为推荐的起始稀释度;实际最佳的稀释度/浓度应由使用者检定。

应用	Ab评论	说明
WB		1/100 - 1/1000.
Flow Cyt		1/50.
ICC/IF		1/100.

靶标

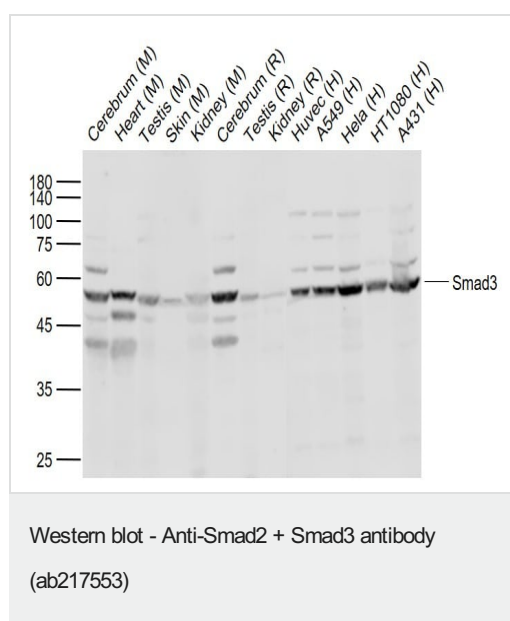
相关性

SMAD is a family of proteins similar to the gene products of the *Drosophila* gene 'mothers against decapentaplegic' (Mad) and the *C. elegans* gene Sma. SMAD proteins are signal transducers and transcriptional modulators that mediate multiple signaling pathways. They mediate the signal of the transforming growth factor (TGF)-beta, and thus regulate multiple cellular processes, such as cell proliferation, apoptosis, and differentiation.

细胞定位

Cytoplasm. Nucleus. Note: Cytoplasmic in the absence of ligand. Migrates to the nucleus when complexed with SMAD4.

图片



All lanes : Anti-Smad2 + Smad3 antibody (ab217553) at 1/1000 dilution

Lane 1 : Mouse cerebrum lysate

Lane 2 : Mouse heart lysate

Lane 3 : Mouse testis lysate

Lane 4 : Mouse Skin lysate

Lane 5 : Mouse Kidney lysate

Lane 6 : Rat cerebrum lysate

Lane 7 : Rat Testis lysate

Lane 8 : Rat kidney lysate

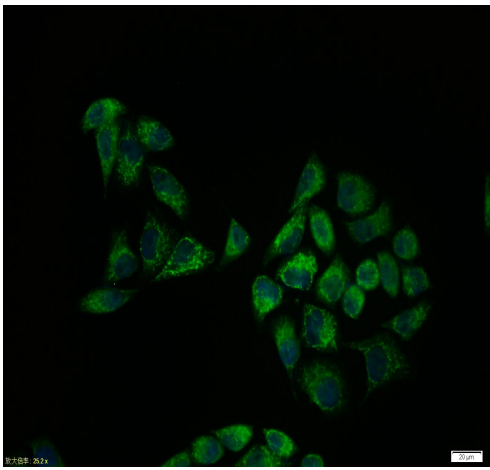
Lane 9 : HUVEC cell lysate

Lane 10 : A459 cell lysate

Lane 11 : HeLa cell lysate

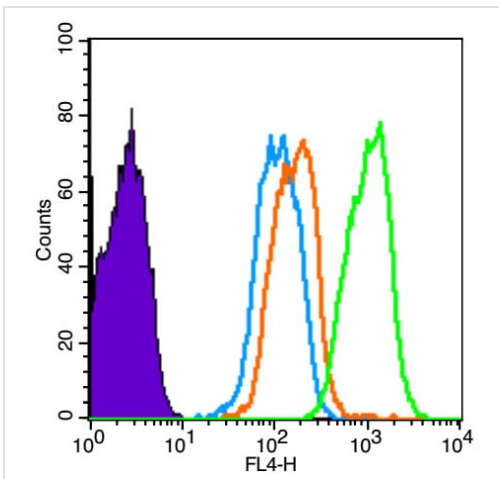
Lane 12 : HT1080 cell lysate

Lane 13 : A431 cell lysate



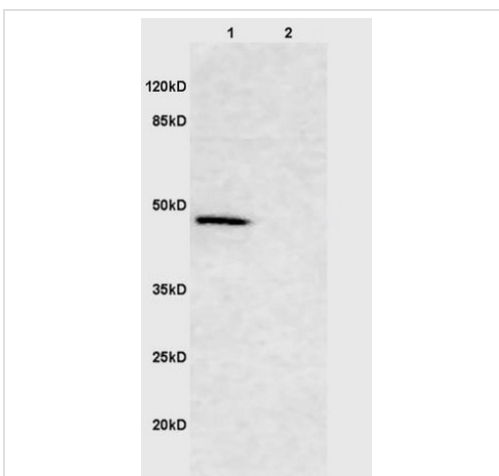
Immunocytochemistry/ Immunofluorescence - Anti-Smad2 + Smad3 antibody (ab217553)

Hela cell; 4% Paraformaldehyde-fixed; Triton X-100 at room temperature for 20 min; Blocking buffer (normal goat serum) at 37°C for 20 min; Antibody incubation with (Smad3) polyclonal Antibody, Unconjugated (ab217553) 1:100, 90 minutes at 37°C; followed by a conjugated Goat Anti-Rabbit IgG antibody at 37°C for 90 minutes, DAPI (blue) was used to stain the cell nuclei.



Flow Cytometry - Anti-Smad2 + Smad3 antibody (ab217553)

HUVEC cells(black) were fixed with 4% PFA for 10min at room temperature, permeabilized with 90% ice-cold methanol for 20 min at -20°C, and incubated in 5% BSA blocking buffer for 30 min at room temperature. Cells were then stained with Smad2/3 Polyclonal Antibody(ab217553) at 1:50 dilution in blocking buffer and incubated for 30 min at room temperature, washed twice with 2% BSA in PBS, followed by secondary antibody(blue) incubation for 40 min at room temperature. Acquisitions of 20,000 events were performed. Cells stained with primary antibody (green), and isotype control (orange).



Western blot - Anti-Smad2 + Smad3 antibody (ab217553)

All lanes : Anti-Smad2 + Smad3 antibody (ab217553) at 1/200 dilution

Lane 1 : mouse brain lysates

Lane 2 : mouse kidney lysates

Secondary

All lanes : HRP-conjugated secondary antibody at 1/3000 dilution

Observed band size: 47 kDa

12% SDS-PAGE

Please note: All products are "FOR RESEARCH USE ONLY. NOT FOR USE IN DIAGNOSTIC PROCEDURES"

Our Abpromise to you: Quality guaranteed and expert technical support

- Replacement or refund for products not performing as stated on the datasheet
- Valid for 12 months from date of delivery
- Response to your inquiry within 24 hours

- We provide support in Chinese, English, French, German, Japanese and Spanish
- Extensive multi-media technical resources to help you
- We investigate all quality concerns to ensure our products perform to the highest standards

If the product does not perform as described on this datasheet, we will offer a refund or replacement. For full details of the Abpromise, please visit <https://www.abcam.cn/abpromise> or contact our technical team.

Terms and conditions

- Guarantee only valid for products bought direct from Abcam or one of our authorized distributors