

# Anti-Smad1 antibody ab131550

**1** [References](#) **2** [图像](#)

### 概述

产品名称	Anti-Smad1抗体
描述	兔多克隆抗体to Smad1
宿主	Rabbit
经测试应用	适用于: WB, ICC/IF
种属反应性	与反应: Human
免疫原	Synthetic peptide conjugated to KLH, corresponding to a region around C terminal amino acids 461-465 (ISSVS ) of Human Smad1 (NP_001003688.1). <a href="#">Run BLAST with</a> <a href="#">Run BLAST with</a>
阳性对照	HeLa cells; HeLa cell extract
常规说明	<p>The Life Science industry has been in the grips of a reproducibility crisis for a number of years. Abcam is leading the way in addressing this with our range of recombinant monoclonal antibodies and knockout edited cell lines for gold-standard validation. Please check that this product meets your needs before purchasing.</p> <p>If you have any questions, special requirements or concerns, please send us an inquiry and/or contact our Support team ahead of purchase. Recommended alternatives for this product can be found below, along with publications, customer reviews and Q&amp;As</p>

### 性能

形式	Liquid
存放说明	Shipped at 4°C. Store at -20°C. Stable for 12 months at -20°C.
存储溶液	pH: 7.40 Preservative: 0.02% Sodium azide Constituents: 49% PBS, 50% Glycerol (glycerin, glycerine), 0.88% Sodium chloride
纯度	PBS without Mg <sup>2+</sup> and Ca <sup>2+</sup>
克隆	Immunogen affinity purified
同种型	多克隆 IgG

## 应用

### The Abpromise guarantee

**Abpromise™**承诺保证使用ab131550于以下的经测试应用

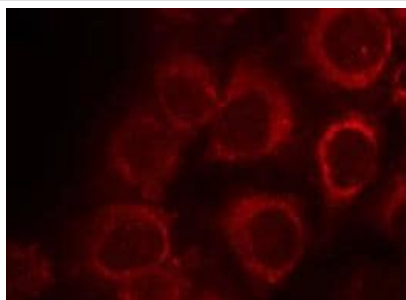
“应用说明”部分 下显示的仅为推荐的起始稀释度;实际最佳的稀释度/浓度应由使用者检定。

应用	Ab评论	说明
WB		1/500 - 1/1000. Detects a band of approximately 55 kDa (predicted molecular weight: 52 kDa).
ICC/IF		1/100 - 1/200.

## 靶标

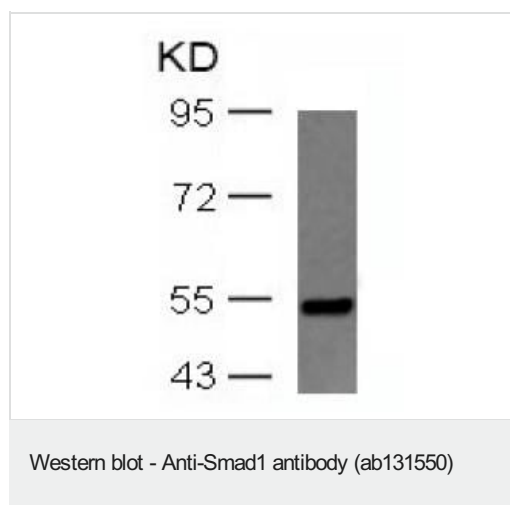
功能	Transcriptional modulator activated by BMP (bone morphogenetic proteins) type 1 receptor kinase. SMAD1 is a receptor-regulated SMAD (R-SMAD). SMAD1/OAZ1/PSMB4 complex mediates the degradation of the CREBBP/EP300 repressor SNIP1.
组织特异性	Ubiquitous. Highest expression seen in the heart and skeletal muscle.
序列相似性	Belongs to the dwarfin/SMAD family. Contains 1 MH1 (MAD homology 1) domain. Contains 1 MH2 (MAD homology 2) domain.
翻译后修饰	Phosphorylated on serine by BMP type 1 receptor kinase. Ubiquitin-mediated proteolysis by SMAD-specific E3 ubiquitin ligase SMURF1.
细胞定位	Cytoplasm. Nucleus. Cytoplasmic in the absence of ligand. Migrates to the nucleus when complexed with SMAD4. Co-localizes with LEMD3 at the nucleus inner membrane.

## 图片



Immunofluorescent analysis of methanol-fixed HeLa cells labelling Smad1 with ab131550 at 1/100 dilution.

Immunocytochemistry/ Immunofluorescence - Anti-Smad1 antibody (ab131550)



Anti-Smad1 antibody (ab131550) at 1/500 dilution + HeLa cell extract

**Predicted band size:** 52 kDa

**Observed band size:** 55 kDa

**Please note:** All products are "FOR RESEARCH USE ONLY. NOT FOR USE IN DIAGNOSTIC PROCEDURES"

#### Our Abpromise to you: Quality guaranteed and expert technical support

---

- Replacement or refund for products not performing as stated on the datasheet
- Valid for 12 months from date of delivery
- Response to your inquiry within 24 hours
- We provide support in Chinese, English, French, German, Japanese and Spanish
- Extensive multi-media technical resources to help you
- We investigate all quality concerns to ensure our products perform to the highest standards

If the product does not perform as described on this datasheet, we will offer a refund or replacement. For full details of the Abpromise, please visit <https://www.abcam.cn/abpromise> or contact our technical team.

#### Terms and conditions

---

- Guarantee only valid for products bought direct from Abcam or one of our authorized distributors