


### Anti-SLUG antibody ab27568

★★★★☆ [11 Abreviews](#) [142 References](#) [3 图像](#)

#### 概述

|       |   |
|-------|---|
| 产品名称  | Anti-SLUG抗体   |
| 描述    | 兔多克隆抗体to SLUG   |
| 宿主    | Rabbit  |
| 特异性   | ab27568 detects the overexpressing human Slug protein, however we have no data on the detection of the endogenous Human protein with this current batch. ab27568 does not cross react with overexpressed SNAIL protein in cell lysates.   |
| 经测试应用 | <b>适用于:</b> WB, IHC-Fr<br><b>不适用于:</b> ICC  |
| 种属反应性 | <b>与反应:</b> Mouse, Rat, Chicken, Human<br><b>预测可用于:</b> Cow, Dog, Pig, Xenopus laevis   |
| 免疫原   | Synthetic peptide. This information is proprietary to Abcam and/or its suppliers.   |
| 常规说明  | <p>The Life Science industry has been in the grips of a reproducibility crisis for a number of years. Abcam is leading the way in addressing this with our range of recombinant monoclonal antibodies and knockout edited cell lines for gold-standard validation. Please check that this product meets your needs before purchasing.</p> <p>If you have any questions, special requirements or concerns, please send us an inquiry and/or contact our Support team ahead of purchase. Recommended alternatives for this product can be found below, along with publications, customer reviews and Q&amp;As</p> |

#### 性能

|      |  |
|------|--|
| 形式   | Liquid   |
| 存放说明 | Shipped at 4°C. Store at +4°C short term (1-2 weeks). Upon delivery aliquot. Store at -20°C or -80°C. Avoid freeze / thaw cycle.   |
| 存储溶液 | pH: 7.40<br>Preservative: 0.02% Sodium azide<br>Constituent: PBS   |
|      | Batches of this product that have a concentration < 1mg/ml may have BSA added as a stabilising agent. If you would like information about the formulation of a specific lot, please contact our scientific support team who will be happy to help. |

|     |                             |
|-----|-----------------------------|
| 纯度  | Immunogen affinity purified |
| 克隆  | 多克隆                         |
| 同种型 | IgG                         |

应用

The Abpromise guarantee

Abpromise™承诺保证使用ab27568于以下的经测试应用

“应用说明”部分 下显示的仅为推荐的起始稀释度;实际最佳的稀释度/浓度应由使用者检定。

| 应用     | Ab评论      | 说明  |
|--------|-----------|---|
| WB     | ★★★★★ (3) | 1/500 - 1/1000. Detects a band of approximately 30-34 kDa (predicted molecular weight: 30 kDa). |
| IHC-Fr | ★★★★★ (2) | Use at an assay dependent concentration.  |

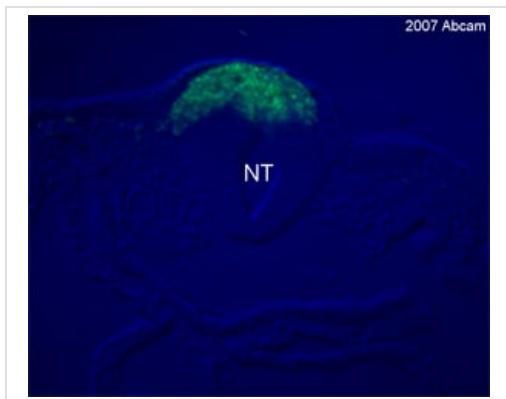
应用说明

Is unsuitable for ICC.

靶标

|       |  |
|-------|--|
| 功能    | Transcriptional repressor. Involved in the generation and migration of neural crest cells.   |
| 组织特异性 | Expressed in placenta and adult heart, pancreas, liver, kidney and skeletal muscle.  |
| 疾病相关  | Defects in SNAI2 are the cause of Waardenburg syndrome type 2D (WS2D) [MIM:608890]. WS2 is a genetically heterogeneous, autosomal dominant disorder characterized by sensorineural deafness, pigmentary disturbances, and absence of dystopia canthorum. The frequency of deafness is higher in WS2 than in WS1. |
| 序列相似性 | Belongs to the snail C2H2-type zinc-finger protein family.<br>Contains 5 C2H2-type zinc fingers.   |
| 细胞定位  | Nucleus.   |

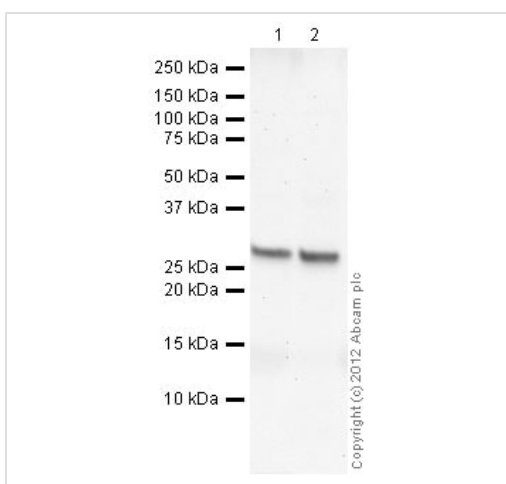
图片



Immunohistochemistry (Frozen sections) - Anti-SLUG antibody (ab27568)

This image is courtesy of Don Newgreen and Dong Cheng Zhang, Murdoch Childrens Research Institute

Transverse section showing Slug-expressing neural crest cells (green) in the dorsal neural tube (NT) in the hindbrain of a quail embryo. 4% PFA fixed embryonic day 1.7 Japanese Quail embryo, frozen in Tissutek, sectioned 12  $\mu$ m. Ab27568 1/400, incubated overnight. Goat anti-rabbit: Alexa488 (Molecular Probes) 1/1000 incubated for 2 hours.



Western blot - Anti-SLUG antibody (ab27568)

**All lanes :** Anti-SLUG antibody (ab27568) at 1  $\mu$ g/ml

**Lane 1 :** Heart (Mouse) Tissue Lysate

**Lane 2 :** Heart (Rat) Tissue Lysate

Lysates/proteins at 30  $\mu$ g per lane.

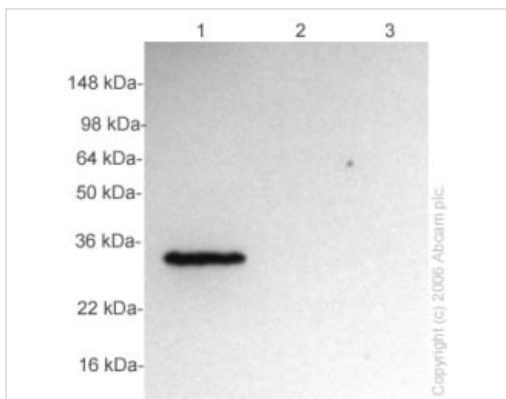
#### Secondary

**All lanes :** Goat Anti-Rabbit IgG H&L (HRP) preadsorbed (**ab97080**) at 1/5000 dilution

**Predicted band size:** 30 kDa

**Observed band size:** 30 kDa

Secondary antibody - goat **anti-rabbit HRP** (preadsorbed)



Western blot - Anti-SLUG antibody (ab27568)

This image is courtesy of Archana Dhasarathy, Ph.D., NC

**All lanes :** Anti-SLUG antibody (ab27568) at 1/1000 dilution

**Lane 1 :** MCF7 cell lysate overexpressing SLUG protein

**Lane 2 :** MCF7 lysate overexpressing SNAIL protein

**Lane 3 :** MCF7 lysate transfected with vector control plasmid

#### Secondary

**All lanes :** HRP-conjugated anti-rabbit antibody at 1/10000 dilution

Performed under reducing conditions.

**Predicted band size:** 30 kDa

### **Observed band size: 34 kDa**

ab27568 detects a band of 34 kDa in MCF7 cells that have been transfected with a vector that overexpresses the SLUG protein. This antibody does not crossreact with the SNAIL protein, as it did not recognize this protein in MCF7 cells overexpressing SNAIL. ab27568 was unable to detect endogenous SLUG in MDA-MB231 cells (not shown).

**Please note:** All products are "FOR RESEARCH USE ONLY. NOT FOR USE IN DIAGNOSTIC PROCEDURES"

### **Our Abpromise to you: Quality guaranteed and expert technical support**

---

- Replacement or refund for products not performing as stated on the datasheet
- Valid for 12 months from date of delivery
- Response to your inquiry within 24 hours
- We provide support in Chinese, English, French, German, Japanese and Spanish
- Extensive multi-media technical resources to help you
- We investigate all quality concerns to ensure our products perform to the highest standards

If the product does not perform as described on this datasheet, we will offer a refund or replacement. For full details of the Abpromise, please visit <https://www.abcam.cn/abpromise> or contact our technical team.

### **Terms and conditions**

---

- Guarantee only valid for products bought direct from Abcam or one of our authorized distributors