




Anti-SLC25A20 antibody ab224388

1 [References](#) **2** [图像](#)

概述

产品名称	Anti-SLC25A20抗体
描述	兔多克隆抗体to SLC25A20
宿主	Rabbit
经测试应用	适用于: IHC-P, WB
种属反应性	与反应: Human 预测可用于: Mouse, Rat, Cynomolgus monkey 
免疫原	Recombinant fragment corresponding to Human SLC25A20 aa 1-100. Database link: O43772 <div>  Run BLAST with  Run BLAST with </div>
阳性对照	IHC-P: Human small intestine tissue. WB: SLC25A20 overexpression HEK-293T lysate.
常规说明	<p>The Life Science industry has been in the grips of a reproducibility crisis for a number of years. Abcam is leading the way in addressing this with our range of recombinant monoclonal antibodies and knockout edited cell lines for gold-standard validation. Please check that this product meets your needs before purchasing.</p> <p>If you have any questions, special requirements or concerns, please send us an inquiry and/or contact our Support team ahead of purchase. Recommended alternatives for this product can be found below, along with publications, customer reviews and Q&As</p>

性能

形式	Liquid
存放说明	Shipped at 4°C. Store at +4°C short term (1-2 weeks). Upon delivery aliquot. Store at -20°C long term. Avoid freeze / thaw cycle.
存储溶液	pH: 7.20 Preservative: 0.02% Sodium azide Constituents: 40% Glycerol (glycerin, glycerine), PBS
纯度	Immunogen affinity purified
克隆	多克隆
同种型	IgG

应用

The Abpromise guarantee **Abpromise™**承诺保证使用ab224388于以下的经测试应用

“应用说明”部分 下显示的仅为推荐的起始稀释度;实际最佳的稀释度/浓度应由使用者检定。

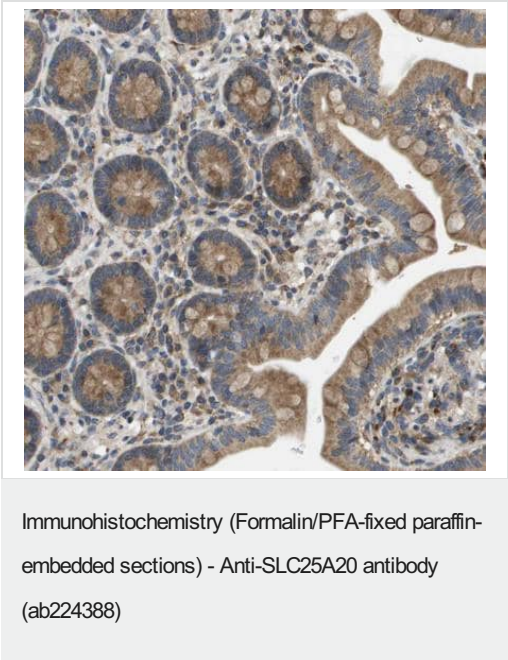
应用	Ab评论	说明
IHC-P		1/50 - 1/200. Perform heat mediated antigen retrieval with citrate buffer pH 6 before commencing with IHC staining protocol.
WB		Use a concentration of 0.04 - 0.4 µg/ml. Predicted molecular weight: 33 kDa.

靶标

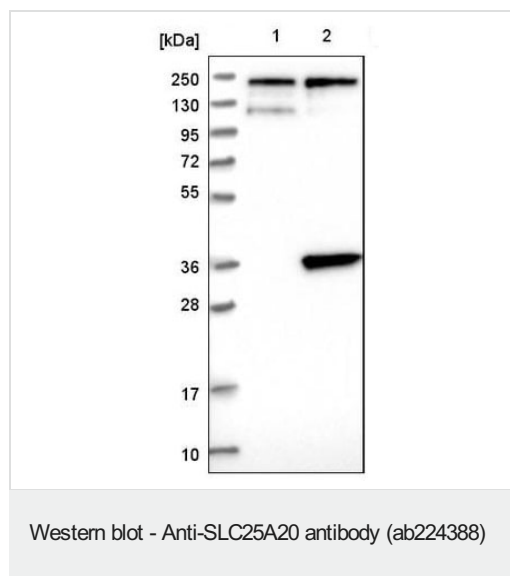
相关性 SLC25A20 is one of several closely related mitochondrial membrane carrier proteins that shuttle substrates between cytosol and the intramitochondrial matrix space. It mediates the transport of acylcarnitines into the mitochondrial matrix for their oxidation by the mitochondrial fatty acid oxidation pathway. Mutations in this gene are associated with carnitine acylcarnitine translocase deficiency, which can cause a variety of pathological conditions such as hypoglycemia, cardiac arrest, hepatomegaly, hepatic dysfunction and muscle weakness, and is usually lethal in new born and infants.

细胞定位 Mitochondrion inner membrane; Multipass membrane protein.

图片



Paraffin-embedded human small intestine tissue stained for SLC25A20 using ab224388 at 1/50 dilution in immunohistochemical analysis.



All lanes : Anti-SLC25A20 antibody (ab224388) at 1/100 dilution

Lane 1 : Vector only transfected HEK-293T (human epithelial cell line from embryonic kidney transformed with large T antigen) lysate

Lane 2 : SLC25A20 overexpression HEK-293T lysate (Co-expressed with a C-terminal myc-DDK tag, ~3.1 kDa)

Predicted band size: 33 kDa

Please note: All products are "FOR RESEARCH USE ONLY. NOT FOR USE IN DIAGNOSTIC PROCEDURES"

Our Abpromise to you: Quality guaranteed and expert technical support

- Replacement or refund for products not performing as stated on the datasheet
- Valid for 12 months from date of delivery
- Response to your inquiry within 24 hours
- We provide support in Chinese, English, French, German, Japanese and Spanish
- Extensive multi-media technical resources to help you
- We investigate all quality concerns to ensure our products perform to the highest standards

If the product does not perform as described on this datasheet, we will offer a refund or replacement. For full details of the Abpromise, please visit <https://www.abcam.cn/abpromise> or contact our technical team.

Terms and conditions

- Guarantee only valid for products bought direct from Abcam or one of our authorized distributors