

Anti-SLC22A3/OCT3 antibody [EPR6630] ab124826

重组 RabMAb

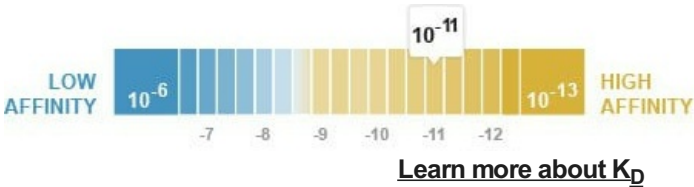
10 References 5 图像

概述

产品名称	Anti-SLC22A3/OCT3抗体[EPR6630]
描述	兔单克隆抗体[EPR6630] to SLC22A3/OCT3
宿主	Rabbit
经测试应用	适用于: Flow Cyt (Intra), WB, IHC-P 不适用于: IP
种属反应性	与反应: Human
免疫原	Synthetic peptide within Human SLC22A3/OCT3 aa 300-400. The exact sequence is proprietary.
阳性对照	Human fetal kidney, Human muscle and Human placenta lysates; Human kidney tissue
常规说明	<p>This product is a recombinant monoclonal antibody, which offers several advantages including:</p> <ul style="list-style-type: none"><li>- High batch-to-batch consistency and reproducibility</li><li>- Improved sensitivity and specificity</li><li>- Long-term security of supply</li><li>- Animal-free production</li></ul> <p>For more information <a href="#">see here</a>.</p> <p>Our RabMAb<sup>®</sup> technology is a patented hybridoma-based technology for making rabbit monoclonal antibodies. For details on our patents, please refer to <a href="#">RabMAb<sup>®</sup> patents</a>.</p> <p>Mouse, Rat: We have preliminary internal testing data to indicate this antibody may not react with these species. Please contact us for more information.</p>

性能

形式	Liquid
存放说明	Shipped at 4°C. Store at -20°C. Stable for 12 months at -20°C.
解离常数 (K <sub>D</sub> )	K <sub>D</sub> = 4.75 x 10 <sup>-11</sup> M



存储溶液	pH: 7.20 Preservative: 0.05% Sodium azide Constituents: 40% Glycerol (glycerin, glycerine), 9.85% Tris glycine, 50% Tissue culture supernatant
纯度	Protein A purified
克隆	单克隆
克隆编号	EPR6630
同种型	IgG

应用

The Abpromise guarantee
Abpromise™承诺保证使用ab124826于以下的经测试应用

“应用说明”部分 下显示的仅为推荐的起始稀释度;实际最佳的稀释度/浓度应由使用者检定。

应用	Ab评论	说明
Flow Cyt (Intra)		1/100. <b>ab172730</b> - Rabbit monoclonal IgG, is suitable for use as an isotype control with this antibody.
WB		1/10000 - 1/50000. Detects a band of approximately 80 kDa (predicted molecular weight: 61 kDa).
IHC-P		1/100 - 1/250. Perform heat mediated antigen retrieval before commencing with IHC staining protocol.

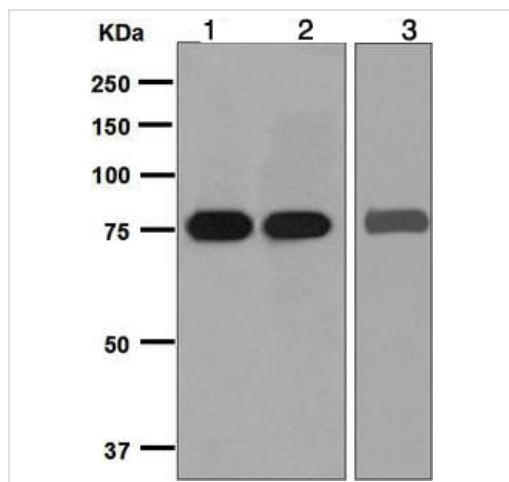
应用说明

Is unsuitable for IP.

靶标

功能	Mediates potential-dependent transport of a variety of organic cations. May play a significant role in the disposition of cationic neurotoxins and neurotransmitters in the brain.
组织特异性	Expressed in placenta, skeletal muscle, prostate, aorta, liver, fetal lung, salivary gland, adrenal gland, kidney and brain cortex. No expression detected in spleen.
序列相似性	Belongs to the major facilitator superfamily. Organic cation transporter family.
细胞定位	Membrane.

图片



Western blot - Anti-SLC22A3/OCT3 antibody [EPR6630] (ab124826)

**All lanes :** Anti-SLC22A3/OCT3 antibody [EPR6630] (ab124826) at 1/10000 dilution

**Lane 1 :** Human fetal kidney tissue lysate

**Lane 2 :** Human muscle tissue lysate

**Lane 3 :** Human placenta tissue lysate

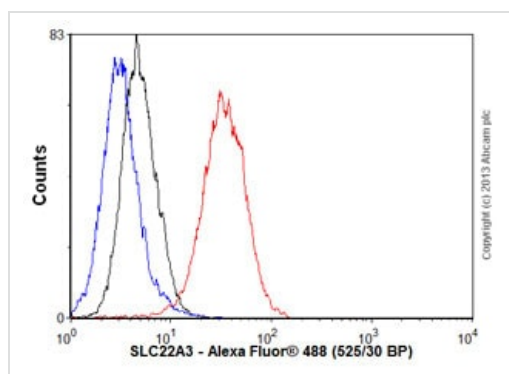
Lysates/proteins at 10 µg per lane.

#### Secondary

**All lanes :** HRP labelled goat anti-rabbit at 1/2000 dilution

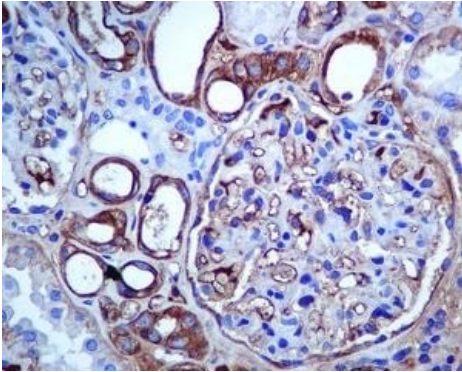
**Predicted band size:** 61 kDa

**Observed band size:** 80 kDa



Flow Cytometry (Intracellular) - Anti-SLC22A3/OCT3 antibody [EPR6630] (ab124826)

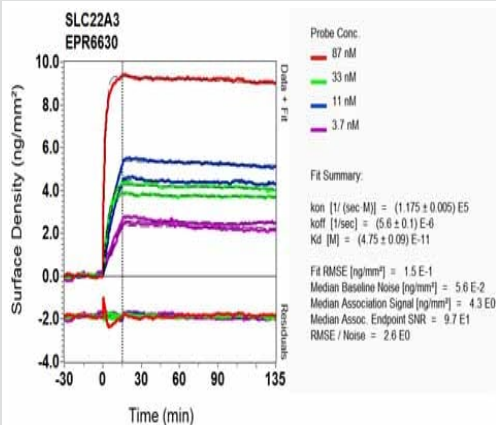
Overlay histogram showing JEG3 cells stained with ab124826 (red line). The cells were fixed with 80% methanol (5 min) and then permeabilized with 0.1% PBS-Tween for 20 min. The cells were then incubated in 1x PBS / 10% normal goat serum / 0.3M glycine to block non-specific protein-protein interactions followed by the antibody (ab124826, 1/100 dilution) for 30 min at 22°C. The secondary antibody used was Alexa Fluor® 488 goat anti-rabbit IgG (H&L) ([ab150077](#)) at 1/2000 dilution for 30 min at 22°C. Isotype control antibody (black line) was rabbit IgG (monoclonal) (0.1µg/1x10<sup>6</sup> cells) used under the same conditions. Unlabelled sample (blue line) was also used as a control. Acquisition of >5,000 events were collected using a 20mW Argon ion laser (488nm) and 525/30 bandpass filter.



Immunohistochemistry (Formalin/PFA-fixed paraffin-embedded sections) - Anti-SLC22A3/OCT3 antibody [EPR6630] (ab124826)

ab124826, at 1/100 dilution, staining SLC22A3/OCT3 in paraffin-embedded Human kidney tissue by Immunohistochemistry.

Perform heat mediated antigen retrieval before commencing with IHC staining protocol.



OIR-D Scanning - Anti-SLC22A3/OCT3 antibody [EPR6630] (ab124826)

Equilibrium disassociation constant ( $K_D$ )

Learn more about  $K_D$

[Click here to learn more about  \$K\_D\$](#)

### Why choose a recombinant antibody?



**Research with confidence**  
Consistent and reproducible results



**Long-term and scalable supply**  
Recombinant technology



**Success from the first experiment**  
Confirmed specificity



**Ethical standards compliant**  
Animal-free production

Anti-SLC22A3/OCT3 antibody [EPR6630]  
(ab124826)

**Please note:** All products are "FOR RESEARCH USE ONLY. NOT FOR USE IN DIAGNOSTIC PROCEDURES"

### Our Abpromise to you: Quality guaranteed and expert technical support

---

- Replacement or refund for products not performing as stated on the datasheet
- Valid for 12 months from date of delivery
- Response to your inquiry within 24 hours
- We provide support in Chinese, English, French, German, Japanese and Spanish
- Extensive multi-media technical resources to help you
- We investigate all quality concerns to ensure our products perform to the highest standards

If the product does not perform as described on this datasheet, we will offer a refund or replacement. For full details of the Abpromise, please visit <https://www.abcam.cn/abpromise> or contact our technical team.

### Terms and conditions

---

- Guarantee only valid for products bought direct from Abcam or one of our authorized distributors