

Anti-SIL1 antibody ab5639

[6 References](#) [1 图像](#)

概述

产品名称	Anti-SIL1抗体
描述	山羊多克隆抗体to SIL1
宿主	Goat
经测试应用	适用于: WB
种属反应性	与反应: Human
免疫原	Synthetic peptide: ELLGSVNSLLKELR , corresponding to C terminal amino acids 448-461 of Human SIL1. Run BLAST with Run BLAST with

常规说明

SIL1 is a resident endoplasmic reticulum (ER) glycoprotein that interacts with the ATPase domain of BIP and enhances nucleotide exchange.

The Life Science industry has been in the grips of a reproducibility crisis for a number of years. Abcam is leading the way in addressing this with our range of recombinant monoclonal antibodies and knockout edited cell lines for gold-standard validation. Please check that this product meets your needs before purchasing.

If you have any questions, special requirements or concerns, please send us an inquiry and/or contact our Support team ahead of purchase. Recommended alternatives for this product can be found below, along with publications, customer reviews and Q&As

性能

形式	Liquid
存放说明	Shipped at 4°C. Upon delivery aliquot and store at -20°C or -80°C. Avoid repeated freeze / thaw cycles.
存储溶液	pH: 7.30 Preservative: 0.02% Sodium azide Constituents: 0.5% Tris buffered saline, 0.5% BSA
纯度	Immunogen affinity purified
纯化说明	Purified from goat serum by ammonium sulphate precipitation followed by antigen affinity chromatography using the immunizing peptide.

Primary antibody说明	SIL1 is a resident endoplasmic reticulum (ER) glycoprotein that interacts with the ATPase domain of BIP and enhances nucleotide exchange.
克隆	多克隆
同种型	IgG

应用

The Abpromise guarantee **Abpromise™**承诺保证使用ab5639于以下的经测试应用

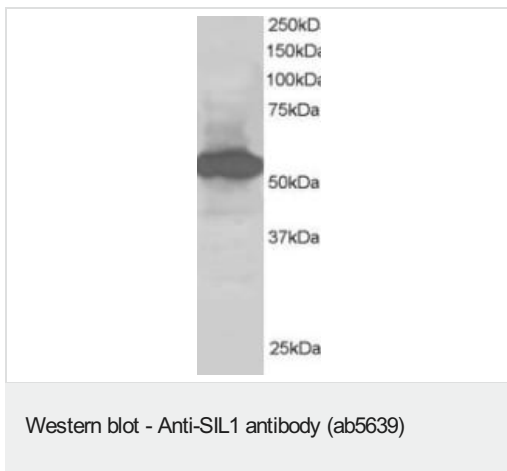
“应用说明”部分 下显示的仅为推荐的起始稀释度;实际最佳的稀释度/浓度应由使用者检定。

应用	Ab评论	说明
WB		Use a concentration of 1 - 2 µg/ml. Detects a band of approximately 55-60 kDa (predicted molecular weight: 53 kDa). A 1 hour primary incubation is recommended for this product.

靶标

功能	Required for protein translocation and folding in the endoplasmic reticulum (ER). Functions as a nucleotide exchange factor for the ER luminal chaperone HSPA5.
组织特异性	Highly expressed in tissues which produce large amounts of secreted proteins such as kidney, liver and placenta. Also expressed in colon, heart, lung, ovary, pancreas, peripheral leukocyte, prostate, spleen and thymus. Expressed at low levels throughout the brain.
疾病相关	Defects in SIL1 are a cause of Marinesco-Sjogren syndrome (MSS) [MIM:248800]. MSS is an autosomal recessive multisystem disorder which is characterized by cerebellar ataxia due to cerebellar atrophy, with Purkinje and granule cell loss and myopathy featuring marked muscle replacement with fat and connective tissue. Other cardinal features include bilateral cataracts, hypergonadotrophic hypogonadism and mild to severe mental retardation. Skeletal abnormalities, short stature, dysarthria, strabismus and nystagmus are also frequent findings. Mutational inactivation of this protein may result in ER stress-induced cell death signaling or malfunctioning chaperone machineries that mishandle client proteins which are critical for the organs targeted in MSS.
序列相似性	Belongs to the SIL1 family.
发展阶段	Expressed in fetal kidney, fetal lung, fetal liver and at low levels in fetal brain.
翻译后修饰	N-glycosylated.
细胞定位	Endoplasmic reticulum lumen.

图片



ab5639 staining (1 μ g/ml) of Human Kidney lysate (RIPA buffer, 30 μ g total protein per lane). Primary incubated for 1 hour. Detected by western blot using chemiluminescence.

ab5639 staining (1 μ g/ml) of Human Kidney lysate (RIPA buffer, 30 μ g total protein per lane). Primary incubated for 1 hour. Detected by western blot using chemiluminescence.

Please note: All products are "FOR RESEARCH USE ONLY. NOT FOR USE IN DIAGNOSTIC PROCEDURES"

Our Abpromise to you: Quality guaranteed and expert technical support

- Replacement or refund for products not performing as stated on the datasheet
- Valid for 12 months from date of delivery
- Response to your inquiry within 24 hours
- We provide support in Chinese, English, French, German, Japanese and Spanish
- Extensive multi-media technical resources to help you
- We investigate all quality concerns to ensure our products perform to the highest standards

If the product does not perform as described on this datasheet, we will offer a refund or replacement. For full details of the Abpromise, please visit <https://www.abcam.cn/abpromise> or contact our technical team.

Terms and conditions

- Guarantee only valid for products bought direct from Abcam or one of our authorized distributors