



Anti-SHOX2 antibody [1D1] ab55740

★★★★★ [2 Abreviews](#) [15 References](#) [2 图像](#)

概述

产品名称	Anti-SHOX2抗体[1D1]
描述	小鼠单克隆抗体[1D1] to SHOX2
宿主	Mouse
经测试应用	适用于: WB, IHC-Fr
种属反应性	与反应: Rat, Human, Recombinant fragment
免疫原	<p>Recombinant fragment corresponding to Human SHOX2 aa 117-204. Sequence:</p> <p>SPELKDRKDDAKGMEDEGQTKIKQRRSRTNFTLEQLNELERL FDETHYPD AFMREELSQRLGLSEARVQVWFQNRRAKCRKQENQLHK</p> <p>Database link: O60902</p> <p> Run BLAST with  Run BLAST with</p>
阳性对照	WB: Human liver tissue lysate; PC-12 cell lysate
常规说明	<p>This product was changed from ascites to tissue culture supernatant on 16/Oct/2019. Lot numbers higher than GR3303529 are from tissue culture supernatant. Please note that the dilutions may need to be adjusted accordingly. If you have any questions, please do not hesitate to contact our scientific support team.</p> <p>The Life Science industry has been in the grips of a reproducibility crisis for a number of years. Abcam is leading the way in addressing this with our range of recombinant monoclonal antibodies and knockout edited cell lines for gold-standard validation. Please check that this product meets your needs before purchasing.</p> <p>If you have any questions, special requirements or concerns, please send us an inquiry and/or contact our Support team ahead of purchase. Recommended alternatives for this product can be found below, along with publications, customer reviews and Q&As</p>

性能

形式	Liquid
存放说明	Shipped at 4°C. Upon delivery aliquot and store at -20°C or -80°C. Avoid repeated freeze / thaw cycles.

存储溶液	pH: 7.40 Constituent: PBS
纯度	Tissue culture supernatant
克隆	单克隆
克隆编号	1D1
同种型	IgG2a
轻链类型	kappa

应用

The Abpromise guarantee **Abpromise™**承诺保证使用ab55740于以下的经测试应用

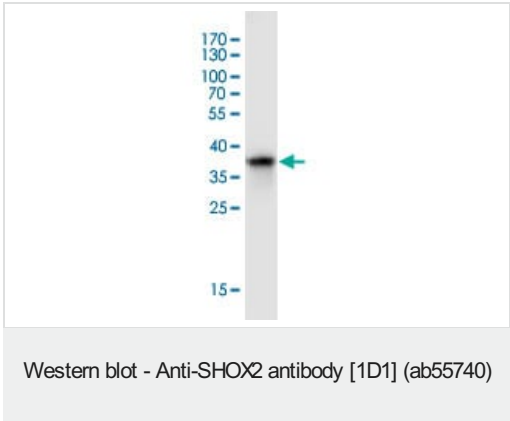
“应用说明”部分 下显示的仅为推荐的起始稀释度;实际最佳的稀释度/浓度应由使用者检定。

应用	Ab评论	说明
WB		Use a concentration of 1 - 5 µg/ml. Predicted molecular weight: 35 kDa.
IHC-Fr	★★★★★ (1)	Use at an assay dependent concentration.

靶标

功能	May be a growth regulator and have a role in specifying neural systems involved in processing somatosensory information, as well as in face and body structure formation.
组织特异性	Expressed in heart, skeletal muscle, liver, lung, bone marrow fibroblast, pancreas and placenta.
序列相似性	Belongs to the paired homeobox family. Bicoid subfamily. Contains 1 homeobox DNA-binding domain.
发展阶段	Expressed during cranofacial development as well as in heart.
细胞定位	Nucleus.

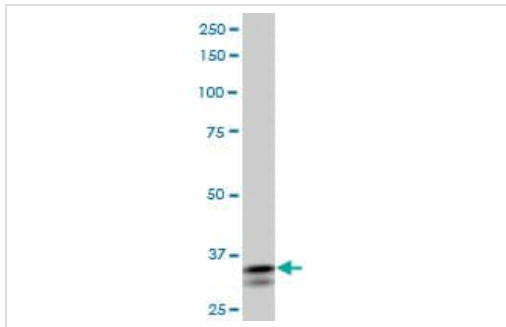
图片



Anti-SHOX2 antibody [1D1] (ab55740) + Recombinant SHOX2 Protein.

Predicted band size: 35 kDa

This image was generated using the ascites version of the product.



Western blot - Anti-SHOX2 antibody [1D1] (ab55740)

SHOX2 antibody (ab55740) at 1ug/lane + PC-12 cell lysate at 25ug/lane.

This image was generated using the ascites version of the product.

Please note: All products are "FOR RESEARCH USE ONLY. NOT FOR USE IN DIAGNOSTIC PROCEDURES"

Our Abpromise to you: Quality guaranteed and expert technical support

- Replacement or refund for products not performing as stated on the datasheet
- Valid for 12 months from date of delivery
- Response to your inquiry within 24 hours
- We provide support in Chinese, English, French, German, Japanese and Spanish
- Extensive multi-media technical resources to help you
- We investigate all quality concerns to ensure our products perform to the highest standards

If the product does not perform as described on this datasheet, we will offer a refund or replacement. For full details of the Abpromise, please visit <https://www.abcam.cn/abpromise> or contact our technical team.

Terms and conditions

- Guarantee only valid for products bought direct from Abcam or one of our authorized distributors