


Anti-SGLT1 antibody ab140918

2 图像

概述

产品名称	Anti-SGLT1抗体
描述	兔多克隆抗体to SGLT1
宿主	Rabbit
特异性	BLAST analysis of the peptide immunogen showed no homology with other Human proteins.
经测试应用	适用于: IHC-P
种属反应性	与反应: Human 预测可用于: Chimpanzee, Orangutan 
免疫原	Synthetic 17 amino acid peptide from the internal region of Human SGLT1.
阳性对照	Human liver and small intestine tissues.
常规说明	<p>The Life Science industry has been in the grips of a reproducibility crisis for a number of years. Abcam is leading the way in addressing this with our range of recombinant monoclonal antibodies and knockout edited cell lines for gold-standard validation. Please check that this product meets your needs before purchasing.</p> <p>If you have any questions, special requirements or concerns, please send us an inquiry and/or contact our Support team ahead of purchase. Recommended alternatives for this product can be found below, along with publications, customer reviews and Q&As</p>

性能

形式	Liquid
存放说明	Shipped at 4°C.
存储溶液	<p>pH: 7.4</p> <p>Preservative: 0.1% Sodium azide</p> <p>Constituent: 99% PBS</p>
纯度	Immunogen affinity purified
克隆	多克隆
同种型	IgG

应用

The Abpromise guarantee

Abpromise™ 承诺保证使用ab140918于以下的经测试应用

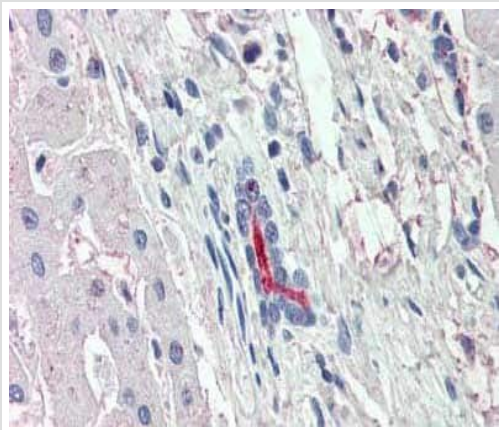
“应用说明”部分 下显示的仅为推荐的起始稀释度;实际最佳的稀释度/浓度应由使用者检定。

应用	Ab评论	说明
IHC-P		Use a concentration of 5 - 10 µg/ml. Perform heat mediated antigen retrieval before commencing with IHC staining protocol.

靶标

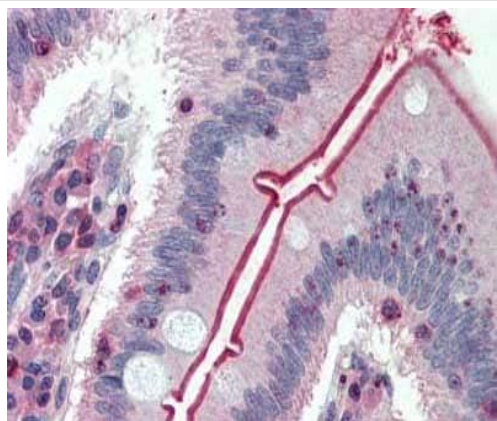
功能	Actively transports glucose into cells by Na(+) cotransport with a Na(+) to glucose coupling ratio of 2:1. Efficient substrate transport in mammalian kidney is provided by the concerted action of a low affinity high capacity and a high affinity low capacity Na(+)/glucose cotransporter arranged in series along kidney proximal tubules.
组织特异性	Expressed mainly in intestine and kidney.
疾病相关	Congenital glucose/galactose malabsorption
序列相似性	Belongs to the sodium:solute symporter (SSF) (TC 2.A.21) family.
翻译后修饰	N-glycosylation is not necessary for the cotransporter function.
细胞定位	Membrane.

图片



Immunohistochemical analysis of formalin-fixed, paraffin-embedded Human liver tissue labelling SGLT1 with **ab140618** at 10 µg/ml.

Immunohistochemistry (Formalin/PFA-fixed paraffin-embedded sections) - Anti-SGLT1 antibody (ab140918)



Immunohistochemistry (Formalin/PFA-fixed paraffin-embedded sections) - Anti-SGLT1 antibody (ab140918)

Immunohistochemical analysis of formalin-fixed, paraffin-embedded Human small intestine tissue labelling SGLT1 with **ab140618** at 10 µg/ml.

Please note: All products are "FOR RESEARCH USE ONLY. NOT FOR USE IN DIAGNOSTIC PROCEDURES"

Our Abpromise to you: Quality guaranteed and expert technical support

- Replacement or refund for products not performing as stated on the datasheet
- Valid for 12 months from date of delivery
- Response to your inquiry within 24 hours
- We provide support in Chinese, English, French, German, Japanese and Spanish
- Extensive multi-media technical resources to help you
- We investigate all quality concerns to ensure our products perform to the highest standards

If the product does not perform as described on this datasheet, we will offer a refund or replacement. For full details of the Abpromise, please visit <https://www.abcam.cn/abpromise> or contact our technical team.

Terms and conditions

- Guarantee only valid for products bought direct from Abcam or one of our authorized distributors