


Anti-SET/TAF-I antibody [EPR12973] ab181990

重组 RabMAb

★★★★★ **2 Abreviews** **9 References** **8 图像**

概述

| | |
|-------|---|
| 产品名称 | Anti-SET/TAF-I抗体[EPR12973] |
| 描述 | 兔单克隆抗体[EPR12973] to SET/TAF-I |
| 宿主 | Rabbit |
| 经测试应用 | 适用于: WB, IHC-P, ICC/IF, IP, Flow Cyt (Intra) |
| 种属反应性 | 与反应: Rat, Human 预测可用于: Mouse  |
| 免疫原 | Synthetic peptide. This information is proprietary to Abcam and/or its suppliers. |
| 阳性对照 | Jurkat , 293T, HeLa, HepG2 whole cell lysate (ab7900); Human nephroblastoma and rat spleen tissues. |
| 常规说明 | <p>This product is a recombinant monoclonal antibody, which offers several advantages including:</p> <ul style="list-style-type: none"> - High batch-to-batch consistency and reproducibility - Improved sensitivity and specificity - Long-term security of supply - Animal-free production <p>For more information see here.</p> <p>Our RabMAb[®] technology is a patented hybridoma-based technology for making rabbit monoclonal antibodies. For details on our patents, please refer to RabMAb[®] patents.</p> |

性能

| | |
|------|---|
| 形式 | Liquid |
| 存放说明 | Shipped at 4°C. Store at +4°C short term (1-2 weeks). Upon delivery aliquot. Store at -20°C long term. Avoid freeze / thaw cycle. |
| 存储溶液 | Preservative: 0.01% Sodium azide Constituents: 59% PBS, 40% Glycerol, 0.05% BSA |
| 纯度 | Protein A purified |
| 克隆 | 单克隆 |
| 克隆编号 | EPR12973 |
| 同种型 | IgG |

应用

The Abpromise guarantee

Abpromise™ 承诺保证使用 ab181990 于以下的经测试应用

“应用说明”部分 下显示的仅为推荐的起始稀释度;实际最佳的稀释度/浓度应由使用者检定。

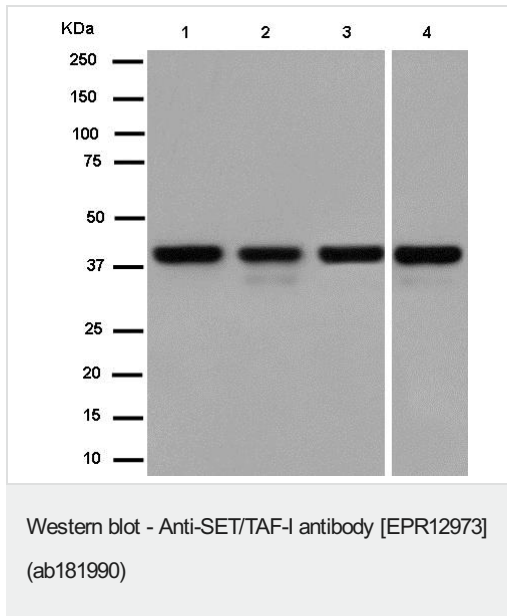
| 应用 | Ab 评论 | 说明 |
|------------------|-----------|---|
| WB | ★★★★★ (1) | 1/10000 - 1/100000. Detects a band of approximately 37, 39 kDa (predicted molecular weight: 33 kDa). |
| IHC-P | | 1/250. Perform heat mediated antigen retrieval with Tris/EDTA buffer pH 9.0 before commencing with IHC staining protocol. |
| ICC/IF | | 1/1000. |
| IP | | 1/30. |
| Flow Cyt (Intra) | | 1/10. ab172730 - Rabbit monoclonal IgG, is suitable for use as an isotype control with this antibody. |

靶标

| | |
|-------|---|
| 功能 | Multitasking protein, involved in apoptosis, transcription, nucleosome assembly and histone binding. Isoform 2 anti-apoptotic activity is mediated by inhibition of the GZMA-activated DNase, NME1. In the course of cytotoxic T-lymphocyte (CTL)-induced apoptosis, GZMA cleaves SET, disrupting its binding to NME1 and releasing NME1 inhibition. Isoform 1 and isoform 2 are potent inhibitors of protein phosphatase 2A. Isoform 1 and isoform 2 inhibit EP300/CREBBP and PCAF-mediated acetylation of histones (HAT) and nucleosomes, most probably by masking the accessibility of lysines of histones to the acetylases. The predominant target for inhibition is histone H4. HAT inhibition leads to silencing of HAT-dependent transcription and prevents active demethylation of DNA. Both isoforms stimulate DNA replication of the adenovirus genome complexed with viral core proteins; however, isoform 2 specific activity is higher. |
| 组织特异性 | Widely expressed. Low levels in quiescent cells during serum starvation, contact inhibition or differentiation. Highly expressed in Wilms' tumor. |
| 疾病相关 | Note=A chromosomal aberration involving SET is found in some cases of acute undifferentiated leukemia (AUL). Translocation t(6;9)(q21;q34.1) with NUP214/CAN. |
| 序列相似性 | Belongs to the nucleosome assembly protein (NAP) family. |
| 结构域 | The C-terminal acidic domain mediates the inhibition of histone acetyltransferases and is required for the DNA replication stimulatory activity. |
| 翻译后修饰 | Isoform 2 is phosphorylated on Ser-15 and Thr-23. Isoform 2 is acetylated on Lys-11. Some glutamate residues are glycyated by TTLL8. This modification occurs exclusively on glutamate residues and results in a glycine chain on the gamma-carboxyl group. N-terminus of isoform 1 is methylated by METTL11A/NTM1. Mainly trimethylated. |
| 细胞定位 | Cytoplasm > cytosol. Endoplasmic reticulum. Nucleus > nucleoplasm. In the cytoplasm, found both in the cytosol and associated with the endoplasmic reticulum. Following CTL attack, moves |

rapidly to the nucleus, where it is found in the nucleoplasm, avoiding the nucleolus. Similar translocation to the nucleus is also observed for lymphocyte-activated killer cells after the addition of calcium. The SET complex is associated with the endoplasmic reticulum.

图片



All lanes : Anti-SET/TAF-I antibody [EPR12973] (ab181990) at 1/100000 dilution

Lane 1 : Jurkat cell lysate

Lane 2 : 293T cell lysate

Lane 3 : HeLa cell lysate

Lane 4 : HepG2 cell lysate

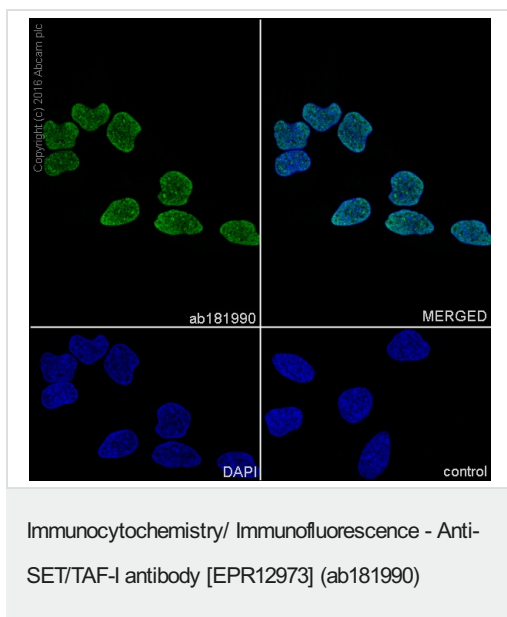
Lysates/proteins at 20 µg per lane.

Secondary

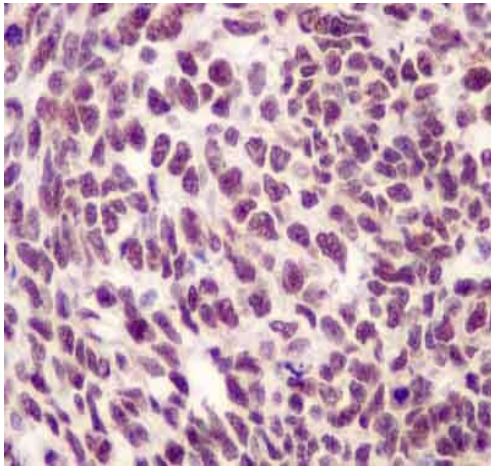
All lanes : Goat Anti-Rabbit IgG, (H+L), Peroxidase conjugated at 1/1000 dilution

Predicted band size: 33 kDa

Blocking/dilution buffer and concentration: 5% NFDM/TBST



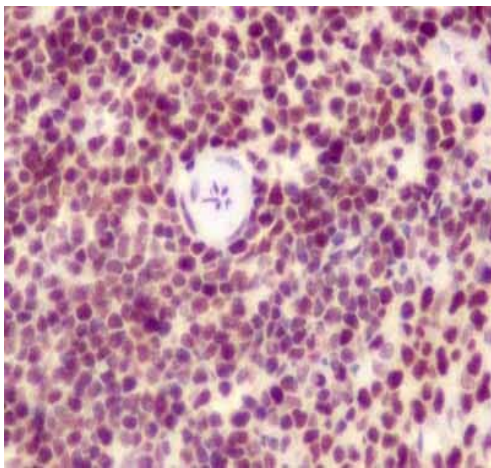
Immunocytochemistry/Immunofluorescence analysis of HeLa (Human epithelial cell line from cervix adenocarcinoma) labeling SET/TAF-I with Purified ab181990 at 1/500 dilution (5 µg/ml). Cells were fixed with 4% PFA and permeabilized with 0.1% tritonX-100. **ab150077** Goat anti rabbit IgG(Alexa Fluor® 488) at 1/1000 dilution was used as the secondary antibody. Nuclei were counterstained with DAPI. PBS was used instead of the primary antibody as the negative control.



Immunohistochemistry (Formalin/PFA-fixed paraffin-embedded sections) - Anti-SET/TAF-I antibody [EPR12973] (ab181990)

Immunohistochemical analysis of paraffin-embedded Human nephroblastoma tissue labeling SET/TAF-I with ab181990 at a 1/250 dilution. Prediluted (ready to use) HRP Polymer for Rabbit IgG was used as a secondary antibody. Counter stain: Hematoxylin

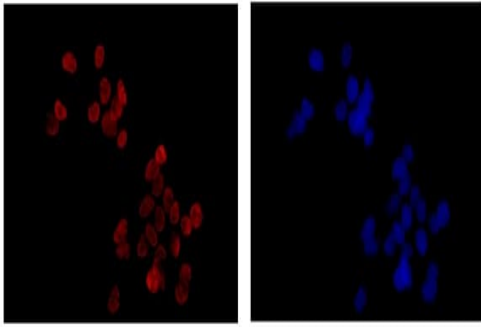
Perform heat mediated antigen retrieval with EDTA buffer pH 9 before commencing with IHC staining protocol.



Immunohistochemistry (Formalin/PFA-fixed paraffin-embedded sections) - Anti-SET/TAF-I antibody [EPR12973] (ab181990)

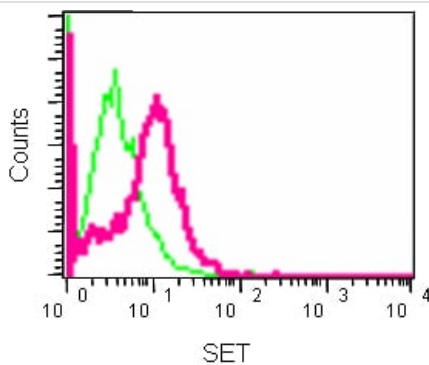
Immunohistochemical analysis of paraffin-embedded rat spleen tissue labeling SET/TAF-I with ab181990 at a 1/250 dilution. Prediluted (ready to use) HRP Polymer for Rabbit IgG was used as a secondary antibody. Counter stain: Hematoxylin

Perform heat mediated antigen retrieval with EDTA buffer pH 9 before commencing with IHC staining protocol.



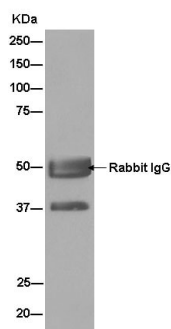
Immunocytochemistry/ Immunofluorescence - Anti-SET/TAF-I antibody [EPR12973] (ab181990)

Immunofluorescent analysis of 4% paraformaldehyde fixed HepG2 cell line staining SET/TAF-I using ab181990 at 1/1000 dilution. A Dylight 555 conjugated Goat anti rabbit IgG at 1/200 dilution was used for secondary antibody detection. Counter stain: Dapi.



Flow Cytometry (Intracellular) - Anti-SET/TAF-I antibody [EPR12973] (ab181990)

Intracellular flow cytometric analysis of 2% paraformaldehyde-fixed Hela cells labeling SET/TAF-I using ab181990 at a 1/10 dilution, or a rabbit monoclonal IgG isotype control. Secondary antibody used was goat anti rabbit IgG (FITC) at a 1/150 dilution.



Immunoprecipitation - Anti-SET/TAF-I antibody [EPR12973] (ab181990)

Immunoprecipitation of Jurkat cell lysate labeling SET/TAF-I using ab181990 at a 1/30 dilution (lane 1). A goat anti-rabbit IgG, (H+L), peroxidase conjugated secondary antibody was used at a dilution of 1/1000. Blocking/dilution buffer and concentration: 5% NFDM/TBST.

Why choose a recombinant antibody?



Research with confidence
Consistent and reproducible results



Long-term and scalable supply
Recombinant technology



Success from the first experiment
Confirmed specificity



Ethical standards compliant
Animal-free production

Anti-SET/TAF-I antibody [EPR12973] (ab181990)

Please note: All products are "FOR RESEARCH USE ONLY. NOT FOR USE IN DIAGNOSTIC PROCEDURES"

Our Abpromise to you: Quality guaranteed and expert technical support

- Replacement or refund for products not performing as stated on the datasheet
- Valid for 12 months from date of delivery
- Response to your inquiry within 24 hours
- We provide support in Chinese, English, French, German, Japanese and Spanish
- Extensive multi-media technical resources to help you
- We investigate all quality concerns to ensure our products perform to the highest standards

If the product does not perform as described on this datasheet, we will offer a refund or replacement. For full details of the Abpromise, please visit <https://www.abcam.cn/abpromise> or contact our technical team.

Terms and conditions

- Guarantee only valid for products bought direct from Abcam or one of our authorized distributors