

Anti-SESN1 antibody [EPR1930(2)] ab134091

重组 RabMAb

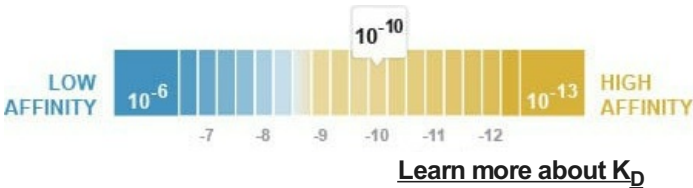
10 References 6 图像

概述

|       |  |
|-------|--|
| 产品名称  | Anti-SESN1抗体[EPR1930(2)]   |
| 描述    | 兔单克隆抗体[EPR1930(2)] to SESN1  |
| 宿主    | Rabbit   |
| 经测试应用 | 适用于: WB, Flow Cyt (Intra)<br>不适用于: ICC/IF,IHC-P or IP  |
| 种属反应性 | 与反应: Mouse, Rat, Human   |
| 免疫原   | Synthetic peptide within Human SESN1 aa 100-200 (internal sequence). The exact sequence is proprietary.  |
| 阳性对照  | WB: Human heart, Ramos, K-562, JAR, HeLa, F9, C2C12, NIH/3T3, and Rat heart lysates. Flow Cyt (intra): Daudi and permeabilized K562 cells,   |
| 常规说明  | <p>This product is a recombinant monoclonal antibody, which offers several advantages including:</p> <ul style="list-style-type: none"><li>- High batch-to-batch consistency and reproducibility</li><li>- Improved sensitivity and specificity</li><li>- Long-term security of supply</li><li>- Animal-free production</li></ul> <p>For more information <a href="#">see here</a>.</p> <p>Our RabMAb<sup>®</sup> technology is a patented hybridoma-based technology for making rabbit monoclonal antibodies. For details on our patents, please refer to <a href="#">RabMAb<sup>®</sup> patents</a>.</p> |

性能

|                        |  |
|------------------------|--|
| 形式                     | Liquid   |
| 存放说明                   | Shipped at 4°C. Store at -20°C. Stable for 12 months at -20°C. |
| 解离常数 (K <sub>D</sub> ) | K <sub>D</sub> = 2.08 x 10 <sup>-10</sup> M                    |



|      |          |
|------|----------|
| 存储溶液 | pH: 7.20 |
|------|----------|

|      |  |
|------|--|
|      | Preservative: 0.01% Sodium azide                                 |
|      | Constituents: PBS, 40% Glycerol (glycerin, glycerine), 0.05% BSA |
| 纯度   | Protein A purified   |
| 克隆   | 单克隆  |
| 克隆编号 | EPR1930(2)   |
| 同种型  | IgG  |

应用

The Abpromise guarantee      **Abpromise™**承诺保证使用ab134091于以下的经测试应用

“应用说明”部分 下显示的仅为推荐的起始稀释度;实际最佳的稀释度/浓度应由使用者检定。

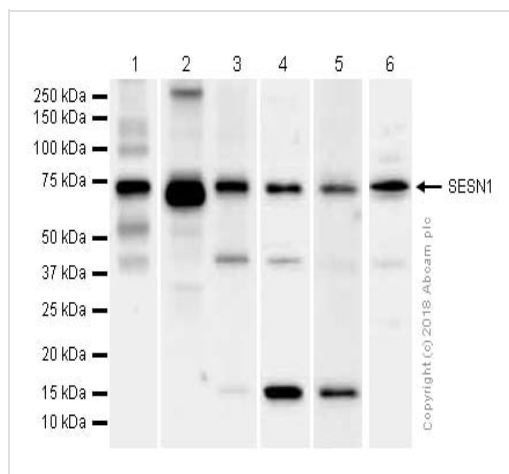
| 应用               | Ab评论 | 说明   |
|------------------|------|--|
| WB               |      | 1/1000 - 1/10000. Predicted molecular weight: 57 kDa.  |
| Flow Cyt (Intra) |      | 1/100 - 1/500.<br><b>ab172730</b> - Rabbit monoclonal IgG, is suitable for use as an isotype control with this antibody. |

应用说明      Is unsuitable for ICC/IF,IHC-P or IP.

靶标

|       |  |
|-------|--|
| 功能    | Involved in the reduction of peroxiredoxins. May also be regulator of cellular growth. |
| 组织特异性 | Widely expressed.  |
| 序列相似性 | Belongs to the sestrin family.   |
| 翻译后修饰 | Phosphorylated upon DNA damage, probably by ATM or ATR.                                |
| 细胞定位  | Nucleus.   |

图片



Western blot - Anti-SESN1 antibody [EPR1930(2)] (ab134091)

**All lanes :** Anti-SESN1 antibody [EPR1930(2)] (ab134091) at 1/1000 dilution (Purified)

**Lane 1 :** Human heart lysates

**Lane 2 :** K-562 (Human chronic myelogenous leukemia lymphoblast) whole cell lysates

**Lane 3 :** F9 (Mouse embryonal carcinoma epithelial cell) whole cell lysates

**Lane 4 :** C2C12 (Mouse myoblasts myoblast) whole cell lysates

**Lane 5 :** NIH/3T3 (Mouse embryonic fibroblast) whole cell lysates

**Lane 6 :** Rat heart lysates

Lysates/proteins at 15 µg per lane.

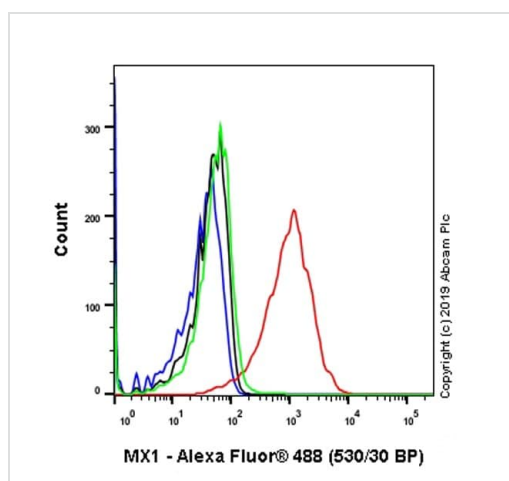
## Secondary

**All lanes :** Goat Anti-Rabbit IgG H&L (HRP) (**ab97051**) at 1/20000 dilution

**Predicted band size:** 57 kDa

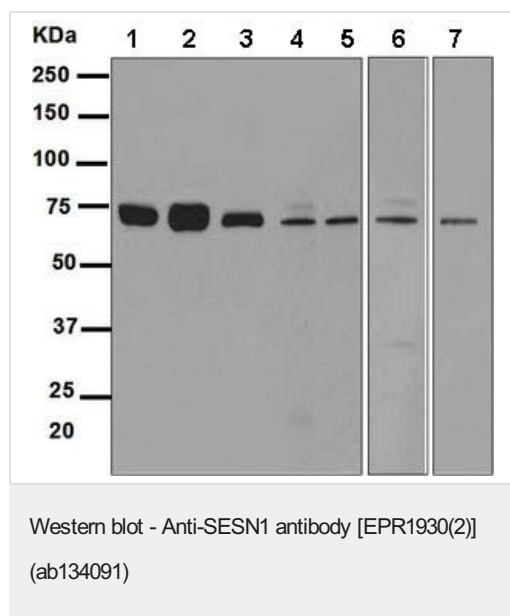
**Observed band size:** 65 kDa

The bands observed are consistent with what has been described in PMID: 29751091 and PMID: 29263116



Flow Cytometry (Intracellular) - Anti-SESN1 antibody [EPR1930(2)] (ab134091)

Intracellular Flow Cytometry analysis of Daudi (Human Burkitt's lymphoma lymphoblast) cells treated with 20 U/ml IFN alpha 1 for 24 hours (Red) / Untreated control (Green) labelling Anti-SESN1 with unpurified **ab207414** at 1/600 dilution. Cells were fixed with 2% paraformaldehyde. A Goat anti rabbit IgG (Alexa Fluor® 488, **ab150077**) was used as the secondary antibody. Black - isotype control, Rabbit monoclonal IgG (**ab172730**). Blue -unlabelled control, cells without incubation with primary and secondary antibodies.



**Lanes 1 & 3-7** : Anti-SESN1 antibody [EPR1930(2)] (ab134091) at 1/1000 dilution ((unpurified))

**Lane 2** : Anti-SESN1 antibody [EPR1930(2)] (ab134091) at 1/1000 dilution

**Lane 1** : Ramos cell lysate

**Lane 2** : K562 cell lysate

**Lane 3** : HeLa cell lysate

**Lane 4** : C2C12 cell lysate

**Lane 5** : NIH3T3 cell lysate

**Lane 6** : F9 cell lysate

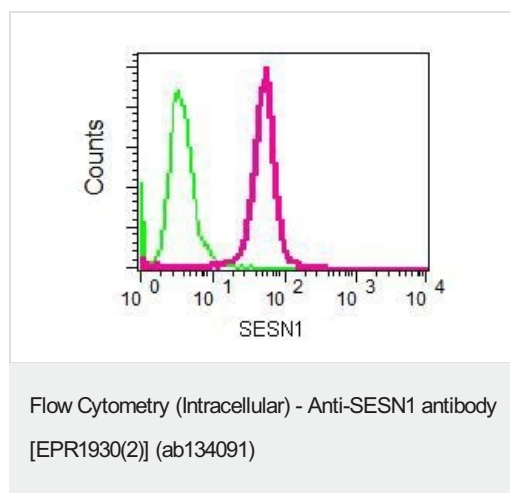
**Lane 7** : JAR cell lysate

Lysates/proteins at 10 µg per lane.

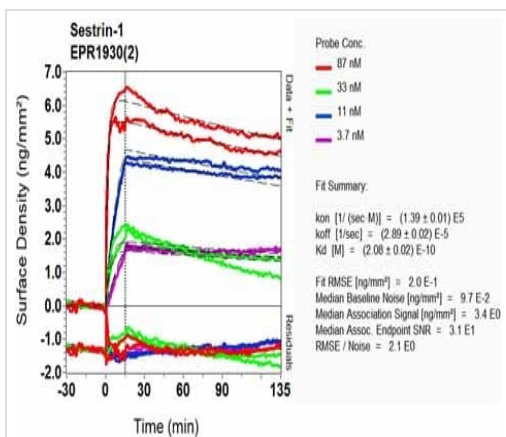
## Secondary

**All lanes** : HRP labelled goat anti-rabbit at 1/2000 dilution

**Predicted band size:** 57 kDa



Intracellular Flow Cytometry analysis of permeabilized K562 cells labeling SESN1 with unpurified ab134091 at 1/100 dilution (red). Rabbit IgG (negative control) shown in green.



OI-RD Scanning - Anti-SES1 antibody  
 [EPR1930(2)] (ab134091)

Equilibrium disassociation constant ( $K_D$ )

Learn more about  $K_D$

[Click here to learn more about  \$K\_D\$](#)

Why choose a recombinant antibody?



**Research with confidence**  
 Consistent and reproducible results



**Long-term and scalable supply**  
 Recombinant technology



**Success from the first experiment**  
 Confirmed specificity



**Ethical standards compliant**  
 Animal-free production

Anti-SES1 antibody [EPR1930(2)] (ab134091)

**Please note:** All products are "FOR RESEARCH USE ONLY. NOT FOR USE IN DIAGNOSTIC PROCEDURES"

### Our Abpromise to you: Quality guaranteed and expert technical support

- Replacement or refund for products not performing as stated on the datasheet
- Valid for 12 months from date of delivery
- Response to your inquiry within 24 hours

- We provide support in Chinese, English, French, German, Japanese and Spanish
- Extensive multi-media technical resources to help you
- We investigate all quality concerns to ensure our products perform to the highest standards

If the product does not perform as described on this datasheet, we will offer a refund or replacement. For full details of the Abpromise, please visit <https://www.abcam.cn/abpromise> or contact our technical team.

#### **Terms and conditions**

---

- Guarantee only valid for products bought direct from Abcam or one of our authorized distributors