


### Anti-SERPING1 antibody [EPR8015] ab134918

重组 RabMAb

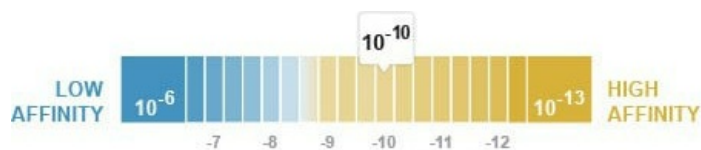
#### 3 图像

#### 概述

产品名称	Anti-SERPING1抗体[EPR8015]
描述	兔单克隆抗体[EPR8015] to SERPING1
宿主	Rabbit
经测试应用	适用于: WB 不适用于: IHC-P
种属反应性	与反应: Human 预测可用于: Mouse, Rat 
免疫原	Synthetic peptide within Human SERPING1 aa 150-250. The exact sequence is proprietary.
阳性对照	Human serum and Human plasma lysates.
常规说明	This product is a recombinant monoclonal antibody, which offers several advantages including: <ul style="list-style-type: none"> <li>- High batch-to-batch consistency and reproducibility</li> <li>- Improved sensitivity and specificity</li> <li>- Long-term security of supply</li> <li>- Animal-free production</li> </ul> For more information <a href="#">see here</a> . Our RabMAb <sup>®</sup> technology is a patented hybridoma-based technology for making rabbit monoclonal antibodies. For details on our patents, please refer to <a href="#">RabMAb<sup>®</sup> patents</a> .

#### 性能

形式	Liquid
存放说明	Shipped at 4°C. Store at -20°C.
解离常数 (K <sub>D</sub> )	K <sub>D</sub> = 1.78 x 10 <sup>-10</sup> M



[Learn more about K<sub>D</sub>](#)

存储溶液	pH: 7.2 Preservative: 0.01% Sodium azide
------	---

Constituents: 9% PBS, 40% Glycerol (glycerin, glycerine), 0.05% BSA, 50% Tissue culture supernatant

**纯度** Protein A purified  
**克隆** 单克隆  
**克隆编号** EPR8015  
**同种型** IgG

## 应用

**The Abpromise guarantee** **Abpromise™**承诺保证使用ab134918于以下的经测试应用

“应用说明”部分 下显示的仅为推荐的起始稀释度;实际最佳的稀释度/浓度应由使用者检定。

应用	Ab评论	说明
WB		1/1000 - 1/10000. Predicted molecular weight: 55 kDa.

**应用说明** Is unsuitable for IHC-P.

## 靶标

**功能** Activation of the C1 complex is under control of the C1-inhibitor. It forms a proteolytically inactive stoichiometric complex with the C1r or C1s proteases. May play a potentially crucial role in regulating important physiological pathways including complement activation, blood coagulation, fibrinolysis and the generation of kinins. Very efficient inhibitor of FXIIa. Inhibits chymotrypsin and kallikrein.

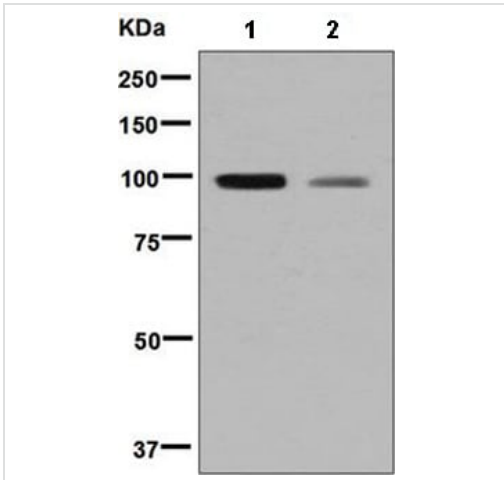
**疾病相关** Defects in SERPING1 are the cause of hereditary angioedema (HAE) [MIM:106100]; also called hereditary angioneurotic edema (HANE). HAE is an autosomal dominant disorder characterized by episodic local subcutaneous edema and submucosal edema involving the upper respiratory and gastrointestinal tracts. HAE due to C1 esterase inhibitor deficiency is comprised of two clinically indistinguishable forms. In HAE type 1, representing 85% of patients, serum levels of C1 esterase inhibitor are less than 35% of normal. In HAE type 2, the levels are normal or elevated, but the protein is non-functional.

**序列相似性** Belongs to the serpin family.

**翻译后修饰** Highly glycosylated (49%) with N- and O-glycosylation.  
Can be proteolytically cleaved by E.coli stcE.

**细胞定位** Secreted.

## 图片



Western blot - Anti-SERPING1 antibody [EPR8015] (ab134918)

**All lanes :** Anti-SERPING1 antibody [EPR8015] (ab134918) at 1/1000 dilution

**Lane 1 :** Human serum lysate

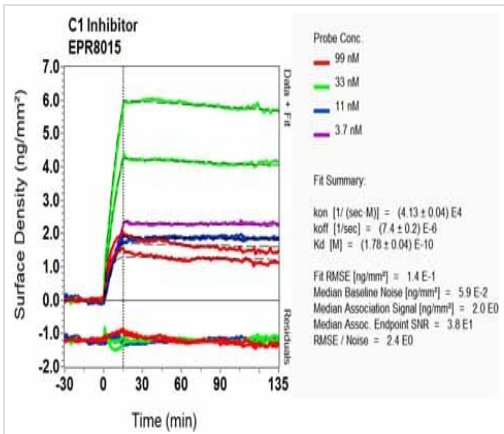
**Lane 2 :** Human plasma lysate

Lysates/proteins at 10 µg per lane.

**Secondary**

**All lanes :** Goat-anti-rabbit HRP at 1/2000 dilution

**Predicted band size:** 55 kDa







OI-RD Scanning - Anti-SERPING1 antibody [EPR8015] (ab134918)

Equilibrium disassociation constant ( $K_D$ )

Learn more about  $K_D$

[Click here to learn more about  \$K\_D\$](#)

Why choose a recombinant antibody?

 <p><b>Research with confidence</b> Consistent and reproducible results</p>	 <p><b>Long-term and scalable supply</b> Recombinant technology</p>
 <p><b>Success from the first experiment</b> Confirmed specificity</p>	 <p><b>Ethical standards compliant</b> Animal-free production</p>

Anti-SERPING1 antibody [EPR8015] (ab134918)

**Please note:** All products are "FOR RESEARCH USE ONLY. NOT FOR USE IN DIAGNOSTIC PROCEDURES"

### Our Abpromise to you: Quality guaranteed and expert technical support

---

- Replacement or refund for products not performing as stated on the datasheet
- Valid for 12 months from date of delivery
- Response to your inquiry within 24 hours
- We provide support in Chinese, English, French, German, Japanese and Spanish
- Extensive multi-media technical resources to help you
- We investigate all quality concerns to ensure our products perform to the highest standards

If the product does not perform as described on this datasheet, we will offer a refund or replacement. For full details of the Abpromise, please visit <https://www.abcam.cn/abpromise> or contact our technical team.

### Terms and conditions

---

- Guarantee only valid for products bought direct from Abcam or one of our authorized distributors