

Anti-SERPINE2/PN-1 antibody ab154591

[2 References](#) [4 图像](#)

概述

产品名称	Anti-SERPINE2/PN-1抗体
描述	兔多克隆抗体to SERPINE2/PN-1
宿主	Rabbit
经测试应用	适用于: WB, IHC-P, ICC/IF
种属反应性	与反应: Mouse, Human
免疫原	Recombinant fragment corresponding to Human SERPINE2/PN-1 aa 163-385. Database link: P07093
阳性对照	HeLa, HepG2 and Mouse brain whole cell lysates; HeLa cells; Human gastric carcinoma tissue.
常规说明	<p>The Life Science industry has been in the grips of a reproducibility crisis for a number of years. Abcam is leading the way in addressing this with our range of recombinant monoclonal antibodies and knockout edited cell lines for gold-standard validation. Please check that this product meets your needs before purchasing.</p> <p>If you have any questions, special requirements or concerns, please send us an inquiry and/or contact our Support team ahead of purchase. Recommended alternatives for this product can be found below, along with publications, customer reviews and Q&As</p>

性能

形式	Liquid
存放说明	Shipped at 4°C. Upon delivery aliquot. Store at -20°C or -80°C. Avoid freeze / thaw cycle.
存储溶液	pH: 7.00 Preservative: 0.01% Thimerosal (merthiolate) Constituents: 78.99% PBS, 1% BSA, 20% Glycerol (glycerin, glycerine)
纯度	Immunogen affinity purified
克隆	多克隆
同种型	IgG

应用

The Abpromise guarantee

Abpromise™ 承诺保证使用ab154591于以下的经测试应用

“应用说明”部分 下显示的仅为推荐的起始稀释度;实际最佳的稀释度/浓度应由使用者检定。

应用	Ab评论	说明
WB		1/500 - 1/3000. Predicted molecular weight: 44 kDa.
IHC-P		1/100 - 1/1000.
ICC/IF		1/100 - 1/1000.

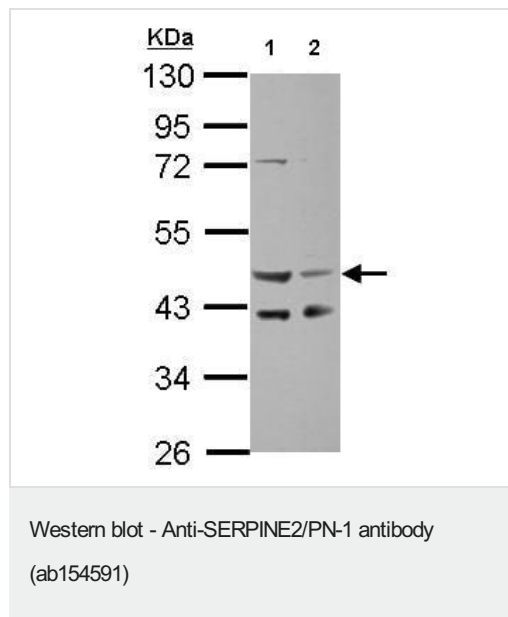
靶标

功能 Serine protease inhibitor with activity toward thrombin, trypsin, and urokinase. Promotes neurite extension by inhibiting thrombin. Binds heparin.

序列相似性 Belongs to the serpin family.

细胞定位 Secreted > extracellular space.

图片



All lanes : Anti-SERPINE2/PN-1 antibody (ab154591) at 1/2000 dilution

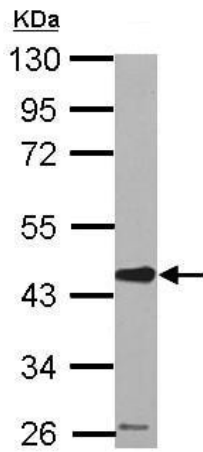
Lane 1 : HeLa whole cell lysate

Lane 2 : HepG2 whole cell lysate

Lysates/proteins at 30 µg per lane.

Predicted band size: 44 kDa

10% SDS PAGE

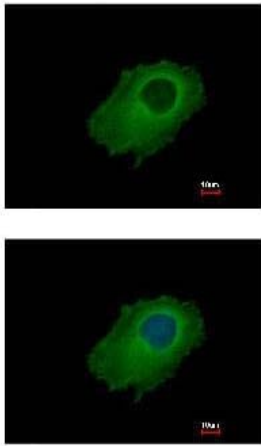


Western blot - Anti-SERPINE2/PN-1 antibody (ab154591)

Anti-SERPINE2/PN-1 antibody (ab154591) at 1/2000 dilution +
 Mouse brain whole cell lysate at 50 µg

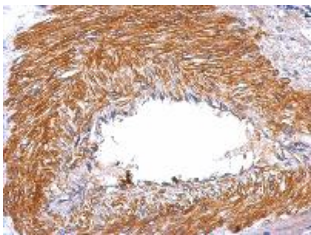
Predicted band size: 44 kDa

10% SDS PAGE



Immunocytochemistry/ Immunofluorescence - Anti-SERPINE2/PN-1 antibody (ab154591)

Immunofluorescence analysis of methanol-fixed HeLa cells labeling SERPINE2/PN-1 with ab154591 at 1/500 dilution. Lower image shows cells co-stained with Hoechst 33342.



Immunohistochemistry (Formalin/PFA-fixed paraffin-embedded sections) - Anti-SERPINE2/PN-1 antibody (ab154591)

Immunohistochemical analysis of paraffin-embedded Human Gastric carcinoma tissue labeling SERPINE2/PN-1 with ab154591 at 1/500 dilution.

Please note: All products are "FOR RESEARCH USE ONLY. NOT FOR USE IN DIAGNOSTIC PROCEDURES"

Our Abpromise to you: Quality guaranteed and expert technical support

-
- Replacement or refund for products not performing as stated on the datasheet
 - Valid for 12 months from date of delivery
 - Response to your inquiry within 24 hours

 - We provide support in Chinese, English, French, German, Japanese and Spanish
 - Extensive multi-media technical resources to help you
 - We investigate all quality concerns to ensure our products perform to the highest standards

If the product does not perform as described on this datasheet, we will offer a refund or replacement. For full details of the Abpromise, please visit <https://www.abcam.cn/abpromise> or contact our technical team.

Terms and conditions

- Guarantee only valid for products bought direct from Abcam or one of our authorized distributors