

Anti-SERCA1 ATPase antibody [IIH11] ab2818

重组

★★★★★ **3 Abreviews** **10 References** **4 图像**

概述

产品名称	Anti-SERCA1 ATPase抗体[IIH11]
描述	小鼠单克隆抗体[IIH11] to SERCA1 ATPase
宿主	Mouse
经测试应用	适用于: WB, IHC-P
种属反应性	与反应: Mouse, Rat
免疫原	Tissue, cells or virus. This information is proprietary to Abcam and/or its suppliers.
表位	This antibody recognizes an epitope between amino acids 199-505 of rabbit skeletal muscle ATPase, a region that is not exposed in native sarcoplasmic reticulum.
阳性对照	WB: Mouse and rat skeletal muscle tissue lysate. IHC-P: Mouse and rat skeletal muscle tissue.
常规说明	<p>This antibody clone is manufactured by Abcam. If you require a custom buffer formulation or conjugation for your experiments, please contact orders@abcam.com.</p> <p>This product is a recombinant monoclonal antibody, which offers several advantages including:</p> <ul style="list-style-type: none"> - High batch-to-batch consistency and reproducibility - Improved sensitivity and specificity - Long-term security of supply - Animal-free production <p>For more information see here.</p>

性能

形式	Liquid
存放说明	Shipped at 4°C. Store at +4°C short term (1-2 weeks). Upon delivery aliquot. Store at -20°C or -80°C. Avoid freeze / thaw cycle.
存储溶液	<p>pH: 7.2</p> <p>Preservative: 0.01% Sodium azide</p> <p>Constituents: PBS, 40% Glycerol (glycerin, glycerine), 0.05% BSA</p>
纯度	Protein A purified
克隆	单克隆
克隆编号	IIH11

同种型

IgG1

应用

The Abpromise guarantee

Abpromise™承诺保证使用ab2818于以下的经测试应用

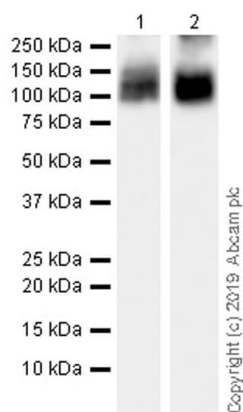
“应用说明”部分 下显示的仅为推荐的起始稀释度;实际最佳的稀释度/浓度应由使用者检定。

应用	Ab评论	说明
WB	★★★★★ (1)	Use a concentration of 0.466 µg/ml. Detects a band of approximately 110 kDa (predicted molecular weight: 110 kDa).
IHC-P		Use a concentration of 0.177 µg/ml. Perform heat mediated antigen retrieval with Tris/EDTA buffer pH 9.0 before commencing with IHC staining protocol.

靶标

功能	Key regulator of striated muscle performance by acting as the major Ca(2+) ATPase responsible for the reuptake of cytosolic Ca(2+) into the sarcoplasmic reticulum. Catalyzes the hydrolysis of ATP coupled with the translocation of calcium from the cytosol to the sarcoplasmic reticulum lumen. Contributes to calcium sequestration involved in muscular excitation/contraction.
组织特异性	Skeletal muscle, fast twitch muscle (type II) fibers.
疾病相关	Brody myopathy
序列相似性	Belongs to the cation transport ATPase (P-type) (TC 3.A.3) family. Type IIA subfamily.
发展阶段	Isoform SERCA1A accounts for more than 99% of SERCA1 isoforms expressed in adult skeletal muscle, while isoform SERCA1B predominates in neo-natal skeletal muscle.
细胞定位	Endoplasmic reticulum membrane. Sarcoplasmic reticulum membrane.

图片



Western blot - Anti-SERCA1 ATPase antibody
[IIH11] (ab2818)

All lanes : Anti-SERCA1 ATPase antibody [IIH11] (ab2818) at
1/1000 dilution

Lane 1 : Mouse skeletal muscle tissue lysate

Lane 2 : Rat skeletal muscle tissue lysate

Lysates/proteins at 20 µg per lane.

Secondary

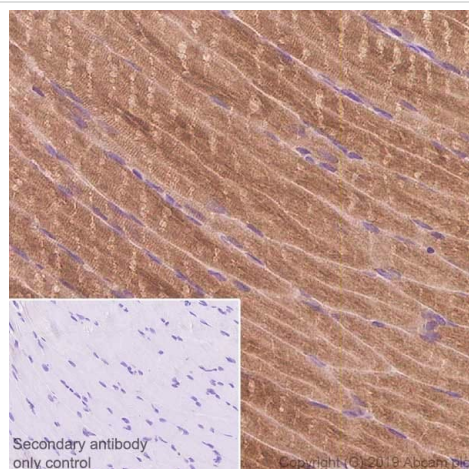
All lanes : Peroxidase-Conjugated Goat anti-Mouse IgG (H+L) at
1/10000 dilution

Predicted band size: 110 kDa

Observed band size: 110 kDa

Exposure time: 48 seconds

Blocking/Dilution buffer: 5% NFDM/TBST.

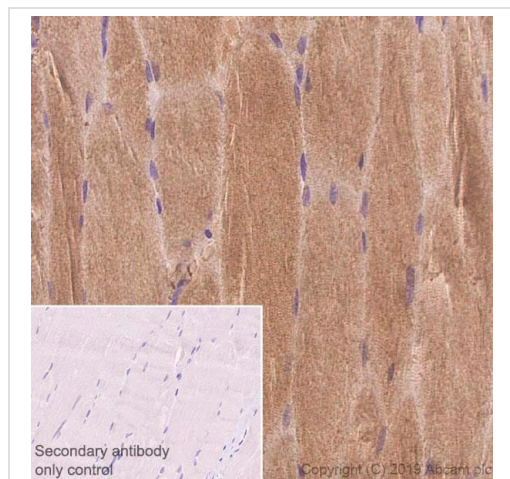


Immunohistochemistry (Formalin/PFA-fixed paraffin-
embedded sections) - Anti-SERCA1 ATPase
antibody [IIH11] (ab2818)

Immunohistochemical analysis of paraffin-embedded rat skeletal muscle tissue labeling SERCA1 ATPase with ab2818 at 0.177 µg/ml, followed by ready to use secondary. Cytoplasmic staining on rat skeletal muscle tissue is observed. The section was incubated with ab2818 for 15 mins at RT. The immunostaining staining was performed on a Leica Biosystems BOND® RX instrument. Counterstained with hematoxylin.

Secondary antibody only control: Used PBS instead of primary antibody, followed by ready to use secondary.

Heat mediated antigen retrieval with Tris-EDTA buffer (pH 9.0) for 20 mins.







Immunohistochemistry (Formalin/PFA-fixed paraffin-embedded sections) - Anti-SERCA1 ATPase antibody [11H11] (ab2818)

Immunohistochemical analysis of paraffin-embedded mouse skeletal muscle tissue labeling SERCA1 ATPase with ab2818 at 0.117µg/ml, followed by ready to use secondary. Cytoplasmic staining on mouse skeletal muscle tissue is observed. The section was incubated with ab2818 for 15 mins at RT. The immunostaining staining was performed on a Leica Biosystems BOND® RX instrument. Counterstained with hematoxylin.

Secondary antibody only control: Used PBS instead of primary antibody, followed by ready to use secondary.

Heat mediated antigen retrieval with Tris-EDTA buffer (pH 9.0) for 20 mins.

Why choose a recombinant antibody?

 <p>Research with confidence Consistent and reproducible results</p>	 <p>Long-term and scalable supply Recombinant technology</p>
 <p>Success from the first experiment Confirmed specificity</p>	 <p>Ethical standards compliant Animal-free production</p>

Anti-SERCA1 ATPase antibody [11H11] (ab2818)

Please note: All products are "FOR RESEARCH USE ONLY. NOT FOR USE IN DIAGNOSTIC PROCEDURES"

Our Abpromise to you: Quality guaranteed and expert technical support

- Replacement or refund for products not performing as stated on the datasheet
- Valid for 12 months from date of delivery

- Response to your inquiry within 24 hours
- We provide support in Chinese, English, French, German, Japanese and Spanish
- Extensive multi-media technical resources to help you
- We investigate all quality concerns to ensure our products perform to the highest standards

If the product does not perform as described on this datasheet, we will offer a refund or replacement. For full details of the Abpromise, please visit <https://www.abcam.cn/abpromise> or contact our technical team.

Terms and conditions

- Guarantee only valid for products bought direct from Abcam or one of our authorized distributors