


### Anti-SDHA antibody [EPR9042(B)] ab139181

敲除验证
重组
RabMAb

[4 References](#)
[7 图像](#)

#### 概述

产品名称	Anti-SDHA抗体[EPR9042(B)]
描述	兔单克隆抗体[EPR9042(B)] to SDHA
宿主	Rabbit
经测试应用	<b>适用于:</b> WB, IHC-P <b>不适用于:</b> ICC/IF
种属反应性	<b>与反应:</b> Human <b>预测可用于:</b> Mouse, Rat 
免疫原	Synthetic peptide within Human SDHA aa 100-200. The exact sequence is proprietary.
阳性对照	Human fetal heart, fetal kidney, HepG2 and HeLa lysate; Human kidney and testis tissues.
常规说明	<p>This product is a recombinant monoclonal antibody, which offers several advantages including:</p> <ul style="list-style-type: none"> <li>- High batch-to-batch consistency and reproducibility</li> <li>- Improved sensitivity and specificity</li> <li>- Long-term security of supply</li> <li>- Animal-free production</li> </ul> <p>For more information <a href="#">see here</a>.</p> <p>Our RabMAb<sup>®</sup> technology is a patented hybridoma-based technology for making rabbit monoclonal antibodies. For details on our patents, please refer to <a href="#">RabMAb<sup>®</sup> patents</a>.</p>

#### 性能

形式	Liquid
存放说明	Shipped at 4°C. Store at +4°C short term (1-2 weeks). Upon delivery aliquot. Store at -20°C. Avoid freeze / thaw cycle.
存储溶液	pH: 7.2 Preservative: 0.01% Sodium azide Constituents: 9% PBS, 40% Glycerol (glycerin, glycerine), 0.05% BSA, 50% Tissue culture supernatant
纯度	Protein A purified
克隆	单克隆

克隆编号EPR9042(B)

同种型IgG

应用

The Abpromise guarantee      **Abpromise™**承诺保证使用ab139181于以下的经测试应用

“应用说明”部分 下显示的仅为推荐的起始稀释度;实际最佳的稀释度/浓度应由使用者检定。

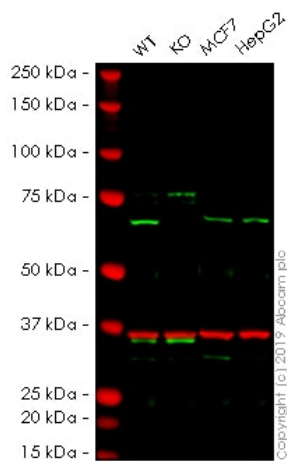
应用	Ab评论	说明
WB		1/1000 - 1/10000. Predicted molecular weight: 72 kDa.
IHC-P		1/100 - 1/250. Perform heat mediated antigen retrieval with citrate buffer pH 6 before commencing with IHC staining protocol.

应用说明      Is unsuitable for ICC/IF.

靶标

功能	Flavoprotein (FP) subunit of succinate dehydrogenase (SDH) that is involved in complex II of the mitochondrial electron transport chain and is responsible for transferring electrons from succinate to ubiquinone (coenzyme Q).
通路	Carbohydrate metabolism; tricarboxylic acid cycle; fumarate from succinate (eukaryal route): step 1/1.
疾病相关	<p>Defects in SDHA are a cause of mitochondrial complex II deficiency (MT-C2D) [MIM:252011]. A disorder of the mitochondrial respiratory chain with heterogeneous clinical manifestations. Clinical features include psychomotor regression in infants, poor growth with lack of speech development, severe spastic quadriplegia, dystonia, progressive leukoencephalopathy, muscle weakness, exercise intolerance, cardiomyopathy. Some patients manifest Leigh syndrome or Kearns-Sayre syndrome.</p> <p>Defects in SDHA are a cause of Leigh syndrome (LS) [MIM:256000]. LS is a severe disorder characterized by bilaterally symmetrical necrotic lesions in subcortical brain regions.</p> <p>Defects in SDHA are the cause of cardiomyopathy dilated type 1GG (CMD1GG) [MIM:613642]. CMD1GG is a disorder characterized by ventricular dilation and impaired systolic function, resulting in congestive heart failure and arrhythmia. Patients are at risk of premature death.</p>
序列相似性	Belongs to the FAD-dependent oxidoreductase 2 family. FRD/SDH subfamily.
细胞定位	Mitochondrion inner membrane.

图片



Western blot - Anti-SDHA antibody [EPR9042(B)]  
(ab139181)

**All lanes :** Anti-SDHA antibody [EPR9042(B)] (ab139181) at 1/1000 dilution

**Lane 1 :** Wild-type HEK-293 (Human epithelial cell line from embryonic kidney) whole cell lysate

**Lane 2 :** SDHA knockout HEK-293 (Human epithelial cell line from embryonic kidney) whole cell lysate

**Lane 3 :** MCF7 (Human breast adenocarcinoma cell line) whole cell lysate

**Lane 4 :** Hep G2 (Human liver hepatocellular carcinoma cell line) whole cell lysate

Lysates/proteins at 20 µg per lane.

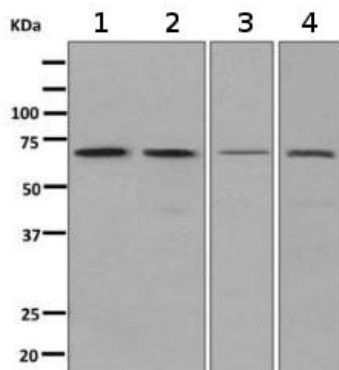
Performed under reducing conditions.

**Predicted band size:** 72 kDa

**Observed band size:** 72 kDa

**Lanes 1 - 4:** Merged signal (red and green). Green - ab139181 observed at 72 kDa. Red - loading control, **ab8245**, observed at 37 kDa.

ab139181 was shown to recognize SDHA in wild-type HEK-293 cells as signal was lost at the expected MW in SDHA knockout cells. Additional cross-reactive bands were observed in the wild-type and knockout cells. Wild-type and SDHA knockout samples were subjected to SDS-PAGE. The membrane was blocked with 3% Milk. Ab139181 and **ab8245** (Mouse anti-GAPDH loading control) were incubated overnight at 4°C at 1/1000 dilution and 1/20000 dilution respectively. Blots were developed with Goat anti-Rabbit IgG H&L (IRDye® 800CW) preabsorbed **ab216773** and Goat anti-Mouse IgG H&L (IRDye® 680RD) preabsorbed **ab216776** secondary antibodies at 1/20000 dilution for 1 hour at room temperature before imaging.



Western blot - Anti-SDHA antibody [EPR9042(B)]  
(ab139181)

**All lanes** : Anti-SDHA antibody [EPR9042(B)] (ab139181) at  
1/1000 dilution

**Lane 1** : Human fetal heart tissue lysate

**Lane 2** : Human fetal kidney tissue lysate

**Lane 3** : HepG2 cell lysate

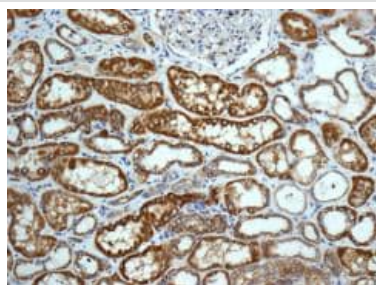
**Lane 4** : HeLa cell lysate

Lysates/proteins at 10 µg per lane.

### Secondary

**All lanes** : HRP labelled goat anti-rabbit at 1/2000 dilution

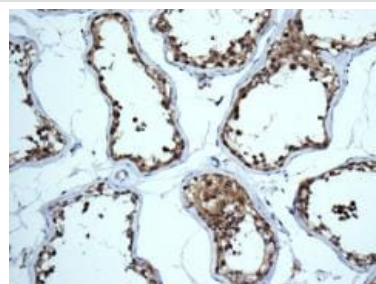
**Predicted band size:** 72 kDa



Immunohistochemistry (Formalin/PFA-fixed paraffin-  
embedded sections) - Anti-SDHA antibody  
[EPR9042(B)] (ab139181)

Immunohistochemical analysis of paraffin-embedded Human kidney  
tissue labelling SDHA with ab139181 at 1/100 dilution.

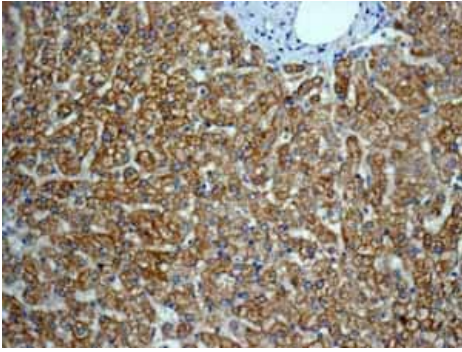
Perform heat mediated antigen retrieval with citrate buffer pH 6  
before commencing with IHC staining protocol.



Immunohistochemistry (Formalin/PFA-fixed paraffin-  
embedded sections) - Anti-SDHA antibody  
[EPR9042(B)] (ab139181)

Immunohistochemical analysis of paraffin-embedded Human testis  
tissue labelling SDHA with ab139181 at 1/100 dilution.

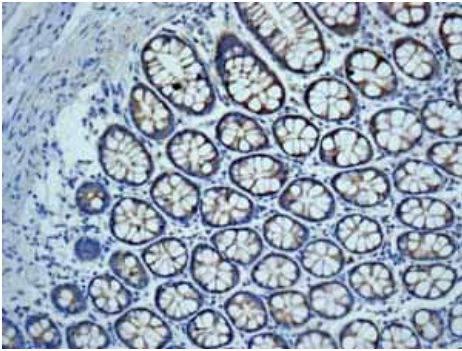
Perform heat mediated antigen retrieval with citrate buffer pH 6  
before commencing with IHC staining protocol.



Immunohistochemistry (Formalin/PFA-fixed paraffin-embedded sections) - Anti-SDHA antibody [EPR9042(B)] (ab139181)

Immunohistochemical analysis of paraffin embedded Normal Human Liver tissue using ab139181 showing +ve staining.

Perform heat mediated antigen retrieval with citrate buffer pH 6 before commencing with IHC staining protocol.



Immunohistochemistry (Formalin/PFA-fixed paraffin-embedded sections) - Anti-SDHA antibody [EPR9042(B)] (ab139181)

Immunohistochemical analysis of paraffin embedded Normal Human Colon tissue using ab139181 showing +ve staining.

Perform heat mediated antigen retrieval with citrate buffer pH 6 before commencing with IHC staining protocol.

### Why choose a recombinant antibody?



Anti-SDHA antibody [EPR9042(B)] (ab139181)

**Please note:** All products are "FOR RESEARCH USE ONLY. NOT FOR USE IN DIAGNOSTIC PROCEDURES"

### **Our Abpromise to you: Quality guaranteed and expert technical support**

---

- Replacement or refund for products not performing as stated on the datasheet
- Valid for 12 months from date of delivery
- Response to your inquiry within 24 hours
  
- We provide support in Chinese, English, French, German, Japanese and Spanish
- Extensive multi-media technical resources to help you
- We investigate all quality concerns to ensure our products perform to the highest standards

If the product does not perform as described on this datasheet, we will offer a refund or replacement. For full details of the Abpromise, please visit <https://www.abcam.cn/abpromise> or contact our technical team.

### **Terms and conditions**

---

- Guarantee only valid for products bought direct from Abcam or one of our authorized distributors