

Anti-SCP3 antibody ab15093

★★★★★ [9 Abreviews](#) [188 References](#) [5 图像](#)

概述

产品名称	Anti-SCP3抗体
描述	兔多克隆抗体to SCP3
宿主	Rabbit
经测试应用	适用于: IHC-P, ICC/IF
种属反应性	与反应: Mouse, Human
免疫原	Synthetic peptide (Human) (C terminal).
阳性对照	IHC-P: Mouse testis tissue sections.
常规说明	<p>The Life Science industry has been in the grips of a reproducibility crisis for a number of years. Abcam is leading the way in addressing this with our range of recombinant monoclonal antibodies and knockout edited cell lines for gold-standard validation. Please check that this product meets your needs before purchasing.</p> <p>If you have any questions, special requirements or concerns, please send us an inquiry and/or contact our Support team ahead of purchase. Recommended alternatives for this product can be found below, along with publications, customer reviews and Q&As</p>

性能

形式	Liquid
存放说明	Shipped at 4°C. Store at +4°C. Do Not Freeze.
存储溶液	pH: 7.40 Preservative: 0.09% Sodium azide Constituent: PBS
纯度	Immunogen affinity purified
克隆	多克隆
同种型	IgG

应用

The Abpromise guarantee **Abpromise™**承诺保证使用ab15093于以下的经测试应用

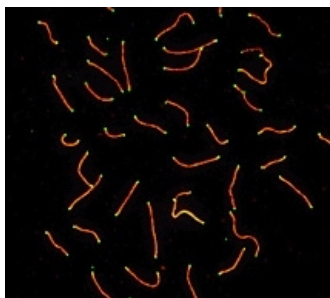
“应用说明”部分 下显示的仅为推荐的起始稀释度;实际最佳的稀释度/浓度应由使用者检定。

应用	Ab评论	说明
IHC-P	★★★★★ (2)	1/100 - 1/500. Perform heat mediated antigen retrieval with citrate buffer pH 6 before commencing with IHC staining protocol. Antigen Retrieval: Bring slides to a boil in 10 mM sodium citrate buffer (pH 6.0), then maintain at a sub-boiling temperature for 10 minutes. Cool slides on bench-top for 30 minutes. Block each section with 100-400 ul blocking solution (1% BSA in PBS) for 1 hour at room temperature
ICC/IF	★★★★★ (3)	1/100 - 1/500.

靶标

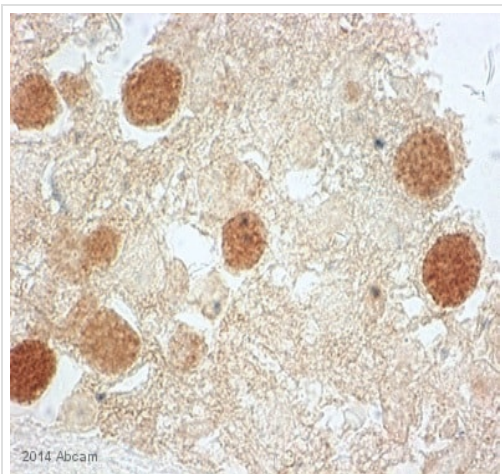
功能	Component of the transverse filaments of synaptonemal complexes (SCS), formed between homologous chromosomes during meiotic prophase. Has an essential meiotic function in spermatogenesis. May be important for testis development.
组织特异性	Testis-specific.
疾病相关	Defects in SYCP3 are a cause of azoospermia due to perturbations of meiosis (AZSPM) [MM:270960]. AZSPM is a condition of having no sperm present in the ejaculate. Testicular histology shows arrest of spermatogenesis at the pachytene stage of primary spermatocytes.
序列相似性	Belongs to the XLR/SYCP3 family.
细胞定位	Nucleus. In tripartite segments of synaptonemal complexes, irrespective of whether these are synapsed or unsynapsed.

图片



Immunocytochemistry/ Immunofluorescence - Anti-SCP3 antibody (ab15093)

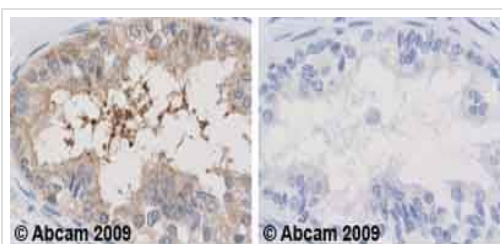
SCP3 labeled in mouse pachytene preparation (red), using ab15093. CDK2 staining, near telomeres, is also present (green).



Immunohistochemistry (Formalin/PFA-fixed paraffin-embedded sections) - Anti-SCP3 antibody (ab15093)

Image is courtesy of an anonymous AbReview

ab15093 staining SCP3 in Human TEFNA testis tissue sections by Immunohistochemistry (IHC-P - paraformaldehyde-fixed, paraffin-embedded sections). Tissue was fixed with paraformaldehyde and blocked with 5% serum for 30 minutes at 25°C; antigen retrieval was by heat mediation in a citrate buffer. Samples were incubated with primary antibody (1/200 in PBS + 5% FCS + 0.1% Triton X-100) for 1 hour at 25°C. Ab6721 (1/1000) was used as the secondary antibody.

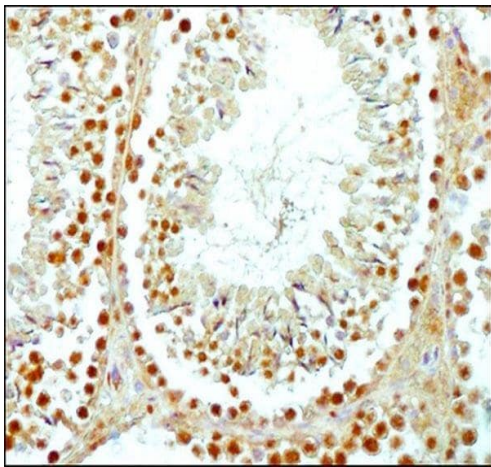


Immunohistochemistry (Formalin/PFA-fixed paraffin-embedded sections) - Anti-SCP3 antibody (ab15093)

Ab15093 staining human normal testis tissue. Staining is localized to nuclear compartment.

Left panel: with primary antibody at 4 ug/ml. Right panel: isotype control.

Sections were stained using an automated system DAKO Autostainer Plus, at room temperature. Sections were rehydrated and antigen retrieved with the Dako 3-in-1 AR buffer EDTA pH 9.0 in a DAKO PT Link. Slides were peroxidase blocked in 3% H₂O₂ in methanol for 10 minutes. They were then blocked with Dako Protein block for 10 minutes (containing casein 0.25% in PBS), then incubated with primary antibody for 20 minutes, and detected with Dako Envision Flex amplification kit for 30 minutes. Colorimetric detection was completed with diaminobenzidine for 5 minutes. Slides were counterstained with Haematoxylin and coverslipped under DePeX. Please note that for manual staining we recommend to optimize the primary antibody concentration and incubation time (overnight incubation), and amplification may be required.



Immunohistochemistry (Formalin/PFA-fixed paraffin-embedded sections) - Anti-SCP3 antibody (ab15093)

ab15093 staining SCP3 in Mouse testes tissue sections by Immunohistochemistry (IHC-P - paraformaldehyde-fixed, paraffin-embedded sections). Samples were incubated with primary antibody at 1/200 dilution



Immunocytochemistry/ Immunofluorescence - Anti-SCP3 antibody (ab15093)

This image is a courtesy of Anonymous Abreview

ab15093 staining SCP3 in pig spermatocytes by Immunocytochemistry/ Immunofluorescence. Cells were fixed with formaldehyde, permeabilized with Triton x100 and blocking with 0.15% BSA was performed for 30 minutes at 25°C. Samples were incubated with primary antibody (1/100: in PBT: PBS + 0.15% BSA+0.1% Tween 20) for 12 hours at 25°C. An Alexa Fluor®594-conjugated donkey polyclonal to rabbit IgG was used at dilution at 1/100 as secondary antibody.

Please note: All products are "FOR RESEARCH USE ONLY. NOT FOR USE IN DIAGNOSTIC PROCEDURES"

Our Abpromise to you: Quality guaranteed and expert technical support

- Replacement or refund for products not performing as stated on the datasheet
- Valid for 12 months from date of delivery
- Response to your inquiry within 24 hours
- We provide support in Chinese, English, French, German, Japanese and Spanish
- Extensive multi-media technical resources to help you

- We investigate all quality concerns to ensure our products perform to the highest standards

If the product does not perform as described on this datasheet, we will offer a refund or replacement. For full details of the Abpromise, please visit <https://www.abcam.cn/abpromise> or contact our technical team.

Terms and conditions

- Guarantee only valid for products bought direct from Abcam or one of our authorized distributors