

# Anti-SCGN/Secretagogin antibody ab111871

**3 References**   **2 图像**

### 概述

产品名称	Anti-SCGN/Secretagogin抗体
描述	兔多克隆抗体to SCGN/Secretagogin
宿主	Rabbit
经测试应用	适用于: WB, ICC/IF
种属反应性	与反应: Human 预测可用于: Mouse, Rat, Cow 
免疫原	Recombinant fragment corresponding to Human SCGN/Secretagogin aa 57-238. (AAH00336)
阳性对照	HeLa and HCT116 cells and whole cell lysates.
常规说明	<p>The Life Science industry has been in the grips of a reproducibility crisis for a number of years. Abcam is leading the way in addressing this with our range of recombinant monoclonal antibodies and knockout edited cell lines for gold-standard validation. Please check that this product meets your needs before purchasing.</p> <p>If you have any questions, special requirements or concerns, please send us an inquiry and/or contact our Support team ahead of purchase. Recommended alternatives for this product can be found below, along with publications, customer reviews and Q&amp;As</p>

### 性能

形式	Liquid
存放说明	Shipped at 4°C. Upon delivery aliquot and store at -20°C or -80°C. Avoid repeated freeze / thaw cycles.
存储溶液	<p>pH: 7.00</p> <p>Preservative: 0.01% Thimerosal (merthiolate)</p> <p>Constituents: 78.99% PBS, 1% BSA, 20% Glycerol (glycerin, glycerine)</p>
纯度	Immunogen affinity purified
纯化说明	ab111871 is purified by antigen-affinity chromatography.
克隆	多克隆
同种型	IgG

## The Abpromise guarantee

Abpromise™承诺保证使用ab111871于以下的经测试应用

“应用说明”部分 下显示的仅为推荐的起始稀释度;实际最佳的稀释度/浓度应由使用者检定。

应用	Ab评论	说明
WB		1/500 - 1/3000. Predicted molecular weight: 32 kDa.
ICC/IF		1/100 - 1/500.

## 靶标

## 组织特异性

Expressed at high levels in the pancreatic islets of Langerhans and to a much lesser extent in the gastrointestinal tract (stomach, small intestine and colon), the adrenal medulla and cortex and the thyroid C-cells. In the brain, the expression is restricted to distinct subtypes of neurons with highest expression in the molecular layer of the cerebellum (stellate and basket cells), in the anterior part of the pituitary gland, in the thalamus, in the hypothalamus and in a subgroup of neocortical neurons.

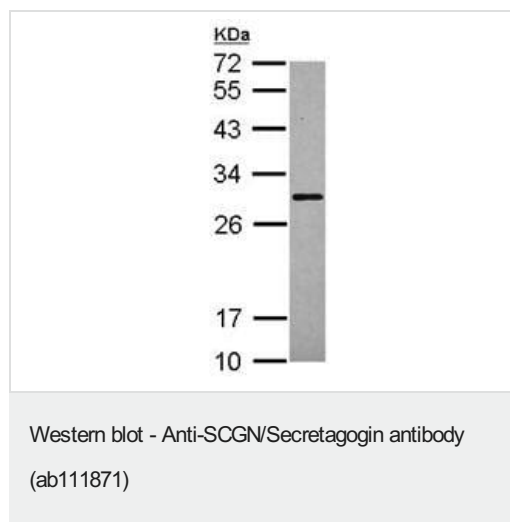
## 序列相似性

Contains 6 EF-hand domains.

## 细胞定位

Cytoplasm. Secreted. Cytoplasmic vesicle > secretory vesicle membrane. Predominantly cytoplasmic. A small proportion is associated with secretory granules and membrane fractions (By similarity). Detectable in human serum after ischemic neuronal damage.

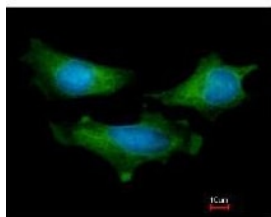
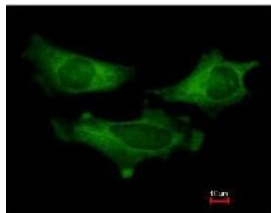
## 图片



Anti-SCGN/Secretagogin antibody (ab111871) at 1/1000 dilution +  
HeLa whole cell lysate at 30 µg

**Predicted band size:** 32 kDa

12% SDS PAGE



ab111871 at 1/200 dilution staining SCGN/Secretagoin in methanol-fixed HeLa cells by Immunofluorescence. The lower image is costained with Hoechst 33342.

Immunocytochemistry/ Immunofluorescence - Anti-SCGN/Secretagoin antibody (ab111871)

**Please note:** All products are "FOR RESEARCH USE ONLY. NOT FOR USE IN DIAGNOSTIC PROCEDURES"

### Our Abpromise to you: Quality guaranteed and expert technical support

- Replacement or refund for products not performing as stated on the datasheet
- Valid for 12 months from date of delivery
- Response to your inquiry within 24 hours
- We provide support in Chinese, English, French, German, Japanese and Spanish
- Extensive multi-media technical resources to help you
- We investigate all quality concerns to ensure our products perform to the highest standards

If the product does not perform as described on this datasheet, we will offer a refund or replacement. For full details of the Abpromise, please visit <https://www.abcam.cn/abpromise> or contact our technical team.

### Terms and conditions

- Guarantee only valid for products bought direct from Abcam or one of our authorized distributors