


# Anti-SCDGFB/PDGF-D antibody ab234666

[1 References](#) [2 图像](#)

### 概述

产品名称	Anti-SCDGFB/PDGF-D抗体
描述	兔多克隆抗体to SCDGFB/PDGF-D
宿主	Rabbit
经测试应用	适用于: ICC/IF, WB
种属反应性	与反应: Human 预测可用于: Mouse, Rat 
免疫原	Recombinant full length protein corresponding to Mouse SCDGFB/PDGF-D aa 1 to the C-terminus. Full length mature chain without signal peptide. Database link: <a href="#">Q925I7-1</a> <a href="#">Run BLAST with</a> <a href="#">Run BLAST with</a>
阳性对照	WB: A549 and HeLa whole cell lysate. ICC/IF: HepG2 cells.
常规说明	<p>The Life Science industry has been in the grips of a reproducibility crisis for a number of years. Abcam is leading the way in addressing this with our range of recombinant monoclonal antibodies and knockout edited cell lines for gold-standard validation. Please check that this product meets your needs before purchasing.</p> <p>If you have any questions, special requirements or concerns, please send us an inquiry and/or contact our Support team ahead of purchase. Recommended alternatives for this product can be found below, along with publications, customer reviews and Q&amp;As</p>

### 性能

形式	Liquid
存放说明	Shipped at 4°C. Store at +4°C short term (1-2 weeks). Upon delivery aliquot. Store at -20°C long term. Avoid freeze / thaw cycle.
存储溶液	pH: 7.40 Preservative: 0.03% Proclin 300 Constituents: 50% Glycerol (glycerin, glycerine), PBS
纯度	Protein G purified
纯化说明	Purity >95%
克隆	多克隆

## 应用

**The Abpromise guarantee**      **Abpromise™**承诺保证使用ab234666于以下的经测试应用

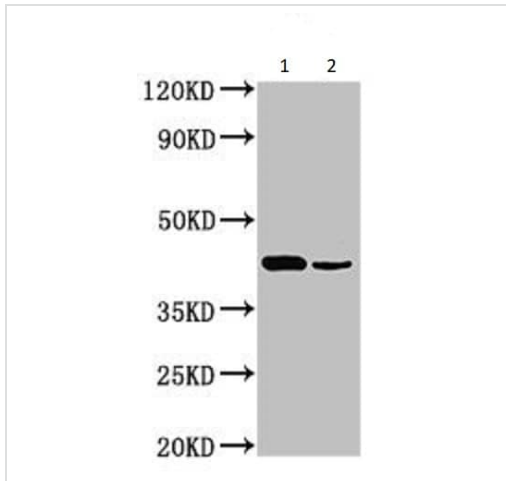
“应用说明”部分 下显示的仅为推荐的起始稀释度;实际最佳的稀释度/浓度应由使用者检定。

应用	Ab评论	说明
ICC/IF		1/50 - 1/200.
WB		1/500 - 1/5000. Detects a band of approximately 43 kDa (predicted molecular weight: 43 kDa).

## 靶标

<b>功能</b>	Potent mitogen for cells of mesenchymal origin. Binding of this growth factor to its affinity receptor elicits a variety of cellular responses. It is released by platelets upon wounding and plays an important role in stimulating adjacent cells to grow and thereby heals the wound. Activated by proteolytic cleavage and this active form acts as a specific ligand for beta platelet-derived growth factor receptor. Induces macrophage recruitment, increased interstitial pressure, and blood vessel maturation during angiogenesis.
<b>组织特异性</b>	Expressed at high levels in the heart, pancreas, adrenal gland and ovary and at low levels in placenta, liver, kidney, prostate, testis, small intestine, spleen and colon. In the kidney, expressed by the visceral epithelial cells of the glomeruli. A widespread expression is also seen in the medial smooth muscle cells of arteries and arterioles, as well as in smooth muscle cells of vasa rectae in the medullary area. Expressed in the adventitial connective tissue surrounding the suprarenal artery. In chronic obstructive nephropathy, a persistent expression is seen in glomerular visceral epithelial cells and vascular smooth muscle cells, as well as de novo expression by periglomerular interstitial cells and by some neointimal cells of arteriosclerotic vessels. Expression in normal prostate is seen preferentially in the mesenchyme of the gland while expression is increased and more profuse in prostate carcinoma. Expressed in many ovarian, lung, renal and brain cancer-derived cell lines.
<b>序列相似性</b>	Belongs to the PDGF/VEGF growth factor family. Contains 1 CUB domain.
<b>发展阶段</b>	Not detectable in the earliest stages of glomerulogenesis, and not detected in the metanephric blastema or surrounding cortical interstitial cells. In later stages of glomerulogenesis, localized to epithelial cells transitioning from the early developing nephrons of the comma- and S-shaped stages to the visceral epithelial cells of differentiated glomeruli. In the developing pelvis, expressed at the basement membrane of immature collecting ducts and by presumptive fibroblastic cells in the interstitium.
<b>翻译后修饰</b>	Proteolytic removal of the N-terminal CUB domain releasing the core domain is necessary for unmasking the receptor-binding epitopes of the core domain. Cleavage after Arg-247 or Arg-249 by urokinase plasminogen activator gives rise to the active form.
<b>细胞定位</b>	Secreted.

## 图片



Western blot - Anti-SCDGFB/PDGF-D antibody (ab234666)

**All lanes :** Anti-SCDGFB/PDGF-D antibody (ab234666) at 1/500 dilution

**Lane 1 :** A549 (Human lung carcinoma cell line) whole cell lysate

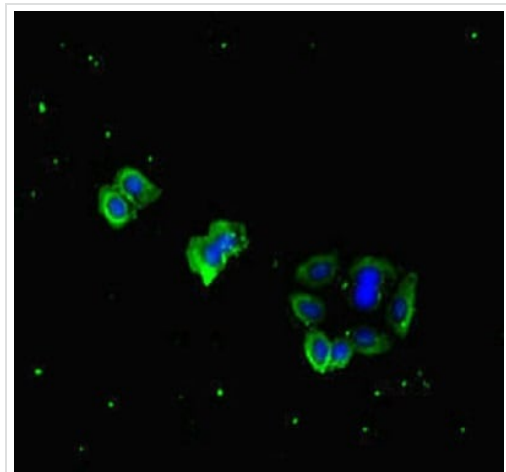
**Lane 2 :** HeLa (Human epithelial cell line from cervix adenocarcinoma) whole cell lysate

**Secondary**

**All lanes :** Goat polyclonal to rabbit IgG at 1/50000 dilution

**Predicted band size:** 43 kDa

**Observed band size:** 43 kDa



Immunocytochemistry/ Immunofluorescence - Anti-SCDGFB/PDGF-D antibody (ab234666)

HepG2 (human liver hepatocellular carcinoma cell line) cells stained for SCDGFB/PDGF-D using ab234666 at a dilution of 1/100 in ICC/IF. Secondary antibody is an Alexa Fluor®488-conjugated Goat Anti-Rabbit IgG (H+L).

**Please note:** All products are "FOR RESEARCH USE ONLY. NOT FOR USE IN DIAGNOSTIC PROCEDURES"

**Our Abpromise to you: Quality guaranteed and expert technical support**

- Replacement or refund for products not performing as stated on the datasheet
- Valid for 12 months from date of delivery
- Response to your inquiry within 24 hours
- We provide support in Chinese, English, French, German, Japanese and Spanish
- Extensive multi-media technical resources to help you
- We investigate all quality concerns to ensure our products perform to the highest standards

If the product does not perform as described on this datasheet, we will offer a refund or replacement. For full details of the Abpromise, please visit <https://www.abcam.cn/abpromise> or contact our technical team.

## Terms and conditions

---

- Guarantee only valid for products bought direct from Abcam or one of our authorized distributors