

### Anti-SAT1 antibody ab105220

★★★★★ [1 Abreviews](#) [7 References](#) [1 图像](#)

#### 概述

产品名称	Anti-SAT1抗体
描述	兔多克隆抗体to SAT1
宿主	Rabbit
经测试应用	适用于: WB
种属反应性	与反应: Human 预测可用于: Mouse, Rat, Rabbit, Cow, Pig, Macaque monkey, Gorilla, Chinese hamster 
免疫原	Synthetic peptide corresponding to Human SAT1 aa 100 to the C-terminus conjugated to keyhole limpet haemocyanin. (Peptide available as <a href="#">ab127967</a> )
阳性对照	Recombinant Human SAT1 protein ( <a href="#">ab87666</a> ) can be used as a positive control in WB. This antibody gave a positive signal in Human Adipose tissue lysate.
常规说明	<p>The Life Science industry has been in the grips of a reproducibility crisis for a number of years. Abcam is leading the way in addressing this with our range of recombinant monoclonal antibodies and knockout edited cell lines for gold-standard validation. Please check that this product meets your needs before purchasing.</p> <p>If you have any questions, special requirements or concerns, please send us an inquiry and/or contact our Support team ahead of purchase. Recommended alternatives for this product can be found below, along with publications, customer reviews and Q&amp;As</p>

#### 性能

形式	Liquid
存放说明	Shipped at 4°C. Store at +4°C short term (1-2 weeks). Upon delivery aliquot. Store at -20°C or -80°C. Avoid freeze / thaw cycle.
存储溶液	pH: 7.40 Preservative: 0.02% Sodium azide Constituents: 1% BSA, PBS  Batches of this product that have a concentration < 1mg/ml may have BSA added as a stabilising agent. If you would like information about the formulation of a specific lot, please contact our scientific support team who will be happy to help.

纯度	Immunogen affinity purified
克隆	多克隆
同种型	IgG

应用

The Abpromise guarantee

**Abpromise™**承诺保证使用ab105220于以下的经测试应用

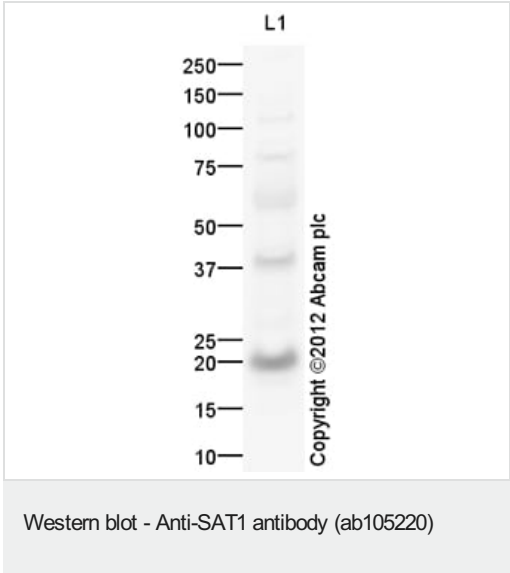
“应用说明”部分 下显示的仅为推荐的起始稀释度;实际最佳的稀释度/浓度应由使用者检定。

应用	Ab评论	说明
WB		Use a concentration of 1 µg/ml. Detects a band of approximately 20 kDa (predicted molecular weight: 20 kDa).

靶标

功能	Enzyme which catalyzes the acetylation of polyamines. Substrate specificity: norspermidine = spermidine >> spermine > N(1)-acetylspermine > putrescine. This highly regulated enzyme allows a fine attenuation of the intracellular concentration of polyamines. Also involved in the regulation of polyamine transport out of cells. Acts on 1,3-diaminopropane, 1,5-diaminopentane, putrescine, spermidine (forming N(1)- and N(8)-acetylspermidine), spermine, N(1)-acetylspermidine and N(8)-acetylspermidine.
通路	Amine and polyamine degradation; putrescine degradation; N-acetylputrescine from putrescine: step 1/1.
疾病相关	Keratosis follicularis spinulosa decalvans X-linked
序列相似性	Belongs to the acetyltransferase family. Contains 1 N-acetyltransferase domain.
细胞定位	Cytoplasm.

图片



Anti-SAT1 antibody (ab105220) at 1 µg/ml + Human adipose normal tissue lysate - total protein ([ab28980](#)) at 25 µg

**Secondary**  
Goat Anti-Rabbit IgG H&L (HRP) preadsorbed ([ab97080](#)) at 1/5000 dilution

Developed using the ECL technique.

Performed under reducing conditions.

**Predicted band size:** 20 kDa  
**Observed band size:** 20 kDa

**Additional bands at:** 110 kDa, 39 kDa, 60 kDa, 78 kDa. We are unsure as to the identity of these extra bands.

**Exposure time:** 12 minutes

**Please note:** All products are "FOR RESEARCH USE ONLY. NOT FOR USE IN DIAGNOSTIC PROCEDURES"

#### **Our Abpromise to you: Quality guaranteed and expert technical support**

---

- Replacement or refund for products not performing as stated on the datasheet
- Valid for 12 months from date of delivery
- Response to your inquiry within 24 hours
- We provide support in Chinese, English, French, German, Japanese and Spanish
- Extensive multi-media technical resources to help you
- We investigate all quality concerns to ensure our products perform to the highest standards

If the product does not perform as described on this datasheet, we will offer a refund or replacement. For full details of the Abpromise, please visit <https://www.abcam.cn/abpromise> or contact our technical team.

#### **Terms and conditions**

---

- Guarantee only valid for products bought direct from Abcam or one of our authorized distributors