

# Anti-SARS spike glycoprotein antibody [1A9] ab273433

★★★★★ [1 Abreviews](#) [14 References](#) [9 图像](#)

### 概述

<b>产品名称</b>	Anti-SARS spike glycoprotein抗体[1A9]
<b>描述</b>	小鼠单克隆抗体[1A9] to SARS spike glycoprotein
<b>宿主</b>	Mouse
<b>经测试应用</b>	<b>适用于:</b> ICC, WB, Flow Cyt, IP, Sandwich ELISA
<b>种属反应性</b>	<b>与反应:</b> SARS-CoV, SARS-CoV-2
<b>免疫原</b>	Recombinant fragment within Human coronavirus SARS spike glycoprotein aa 1000-1200. The exact immunogen sequence used to generate this antibody is proprietary information. If additional detail on the immunogen is needed to determine the suitability of the antibody for your needs, please <b>contact</b> our Scientific Support team to discuss your requirements.

[Run BLAST with](#)      [Run BLAST with](#)

<b>阳性对照</b>	WB: Infected Caco-2 cells; SARS-CoV-2 transfected HEK-293T cell lysate; SARS-Cov1 spike protein transfected Expi cell lysate, SARS-Cov1 3xFlag spike protein transfected Expi cell lysate, SARS-Cov2 spike protein transfected Expi cell lysate and SARS-Cov2 3xFlag spike protein transfected Expi cell lysate. ICC: SARS-CoV-2 transfected BHK-21, Vero E6, COS-7 cells. IP: SARS-CoV-2 transfected HEK-293T cells. Flow Cyt: Infected HEK-293T cells.
-------------	--

### 常规说明

#### Applications overview

Tick: Tested and Guaranteed to work    X: Will not work    —: No data

	WB	IHC	ICC/IF	Flow Cyt	ELISA	IP
SARS-CoV	✓	-	-	-	-	-
SARS-CoV2	✓	-	✓	✓	✓	✓

The Life Science industry has been in the grips of a reproducibility crisis for a number of years. Abcam is leading the way in addressing this with our range of recombinant monoclonal antibodies and knockout edited cell lines for gold-standard validation. Please check that this product meets your needs before purchasing.

If you have any questions, special requirements or concerns, please send us an inquiry and/or contact our Support team ahead of purchase. Recommended alternatives for this product can be found below, along with publications, customer reviews and Q&As

### 性能

形式	Liquid
存放说明	Shipped at 4°C. Store at +4°C short term (1-2 weeks). Upon delivery aliquot. Store at -20°C long term. Avoid freeze / thaw cycle.
存储溶液	pH: 7.40 Constituent: 100% PBS
纯度	Protein G purified
克隆	单克隆
克隆编号	1A9
同种型	IgG1

## 应用

**The Abpromise guarantee**      **Abpromise™** 承诺保证使用 ab273433 于以下的经测试应用

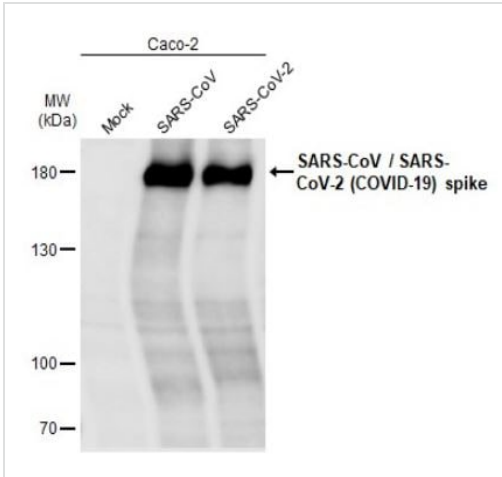
“应用说明”部分下显示的仅为推荐的起始稀释度；实际最佳的稀释度/浓度应由使用者检定。

应用	Ab评论	说明
ICC	★★★★★ (1)	1/100 - 1/2000.
WB		1/500 - 1/3000. Predicted molecular weight: 139 kDa.
Flow Cyt		Use at an assay dependent concentration.
IP		Use at an assay dependent concentration.
Sandwich ELISA		Use a concentration of 5 µg/ml.

## 靶标

**相关性**      A novel coronavirus has been identified as the causative agent of SARS (Severe Acute Respiratory Syndrome). Coronaviruses are a major cause of upper respiratory diseases in humans. The genomes of these viruses are positive stranded RNA approximately 27 to 31kb in length. SARS infection can be mediated by the binding of the viral spike protein, a glycosylated 139 kDa protein and the major surface antigen of the virus, to the angiotensin converting enzyme 2 (ACE2) on target cells. This binding can be blocked by a soluble form of ACE2.

## 图片



Western blot - Anti-SARS spike glycoprotein antibody [1A9] (ab273433)

**Lane 1** : Anti-SARS spike glycoprotein antibody [1A9] (ab273433)

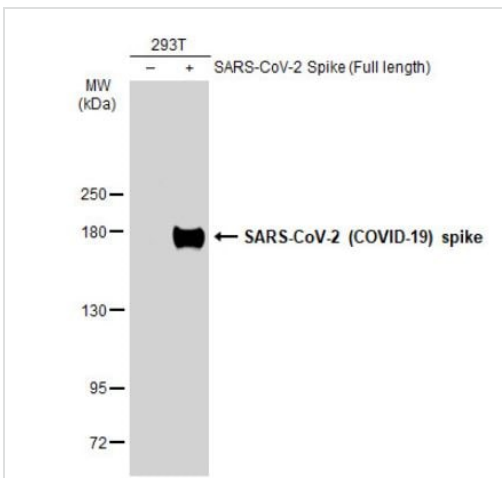
**Lanes 2-3** : Anti-SARS spike glycoprotein antibody [1A9] (ab273433) at 1/1000 dilution

**Lane 1** : Mock

**Lane 2** : SARS-CoV infected Caco-2 whole cell extract

**Lane 3** : SARS-CoV-2 infected Caco-2 whole cell extract

**Predicted band size:** 139 kDa



Western blot - Anti-SARS spike glycoprotein antibody [1A9] (ab273433)

**All lanes** : Anti-SARS spike glycoprotein antibody [1A9] (ab273433) at 1/1000 dilution

**Lane 1** : Non-transfected HEK-293T whole cell extract

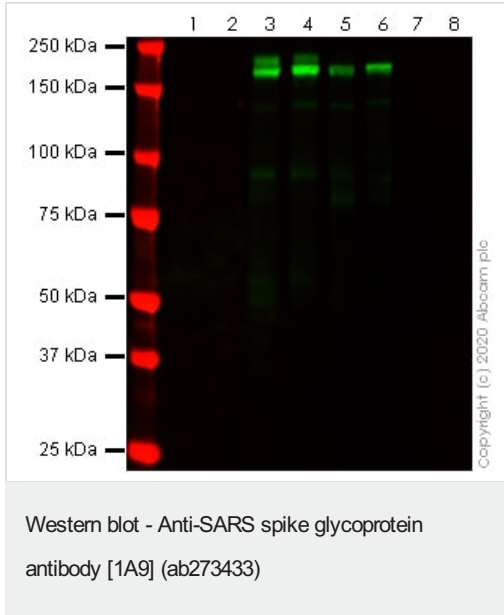
**Lane 2** : Transfected HEK-293T whole cell extract

Lysates/proteins at 30 µg per lane.

**Secondary**

**All lanes** : HRP-conjugated anti-mouse IgG antibody

**Predicted band size:** 139 kDa



**All lanes :** Anti-SARS spike glycoprotein antibody [1A9] (ab273433) at 1 µg/ml

**Lane 1 :** Mock transfected human Expi cell lysate

**Lane 2 :** PDL-1 Flag transfected human Expi cell lysate

**Lane 3 :** SARS-Cov1 spike protein transfected human Expi cell lysate

**Lane 4 :** SARS-Cov1 3xFlag spike protein transfected human Expi cell lysate

**Lane 5 :** SARS-Cov2 spike protein transfected human Expi cell lysate

**Lane 6 :** SARS-Cov2 3xFlag spike protein transfected human Expi cell lysate

**Lane 7 :** MERS Spike protein transfected human Expi cell lysate

**Lane 8 :** MERS 3xFlag Spike protein transfected human Expi cell lysate

Lysates/proteins at 10 µg per lane.

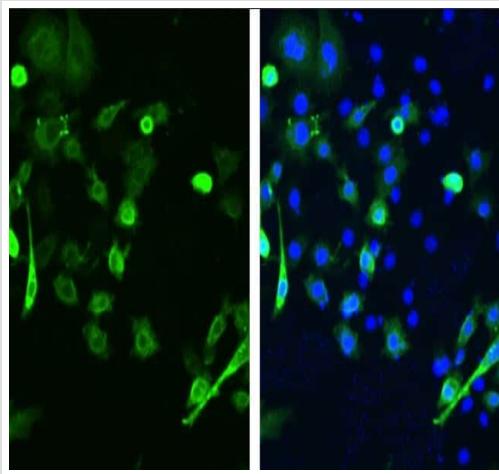
Performed under reducing conditions.

**Predicted band size:** 139 kDa

**Observed band size:** 200 kDa

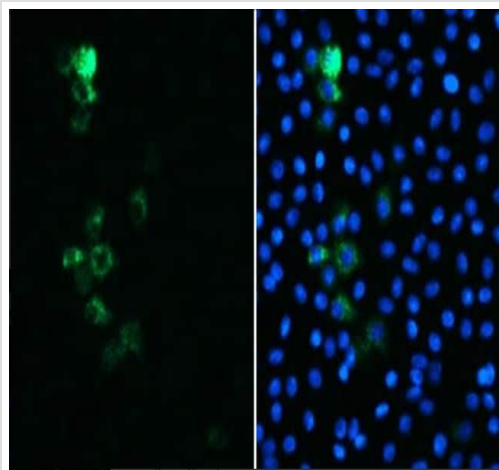
**Lanes 1 - 8:** Merged signal (red and green). Green - ab273433 observed at 200 kDa. Red - loading control.

ab273433 was shown to react with SARS spike glycoprotein in western blot. Membranes were blocked in 3% milk before incubation with ab273433 overnight at 4°C at 1 µg/ml. Blots were incubated with Donkey anti-Mouse IgG H&L (IRDye® 800CW) preabsorbed (**ab216774**) antibody at 1 in 20000 dilution for 1 hour at room temperature before imaging.



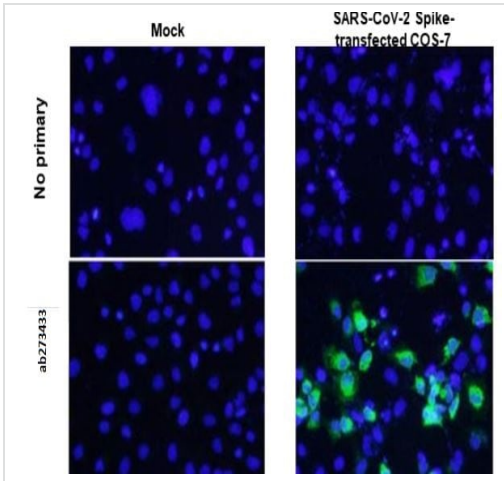
4% paraformaldehyde-fixed BHK-21 cells stained for SARS-CoV-2 (COVID-19) spike (green) using ab273433 at 1/2000 dilution in ICC.

Immunocytochemistry - Anti-SARS spike glycoprotein antibody [1A9] (ab273433)



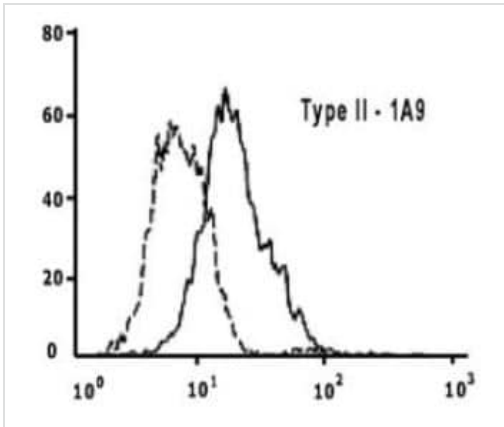
Methanol-fixed Vero E6 cells infected with SARS-CoV-2 (MOI of 1) stained for SARS-CoV-2 (green) using ab273433 at 1/2000 dilution in ICC. Counterstained with DAPI (Blue).

Immunocytochemistry - Anti-SARS spike glycoprotein antibody [1A9] (ab273433)



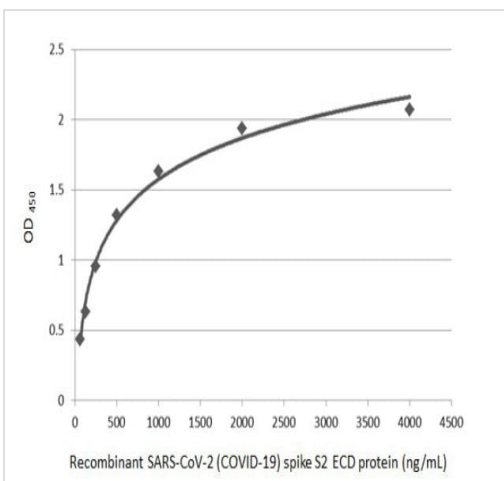
Immunocytochemistry - Anti-SARS spike glycoprotein antibody [1A9] (ab273433)

Mock and SARS-CoV-2-transfected COS-7 cells stained for SARS-CoV-2 (COVID-19) spike (green) using ab273433 at 1/2000 dilution in ICC. Nuclei were counterstained with DAPI (Blue).



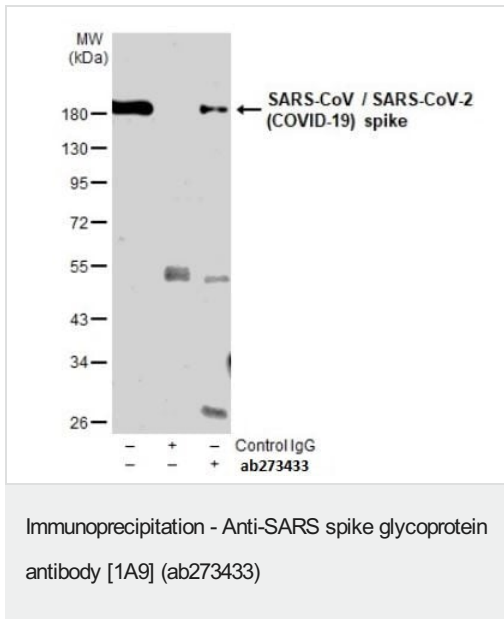
Flow Cytometry - Anti-SARS spike glycoprotein antibody [1A9] (ab273433)

Flow cytometric analysis of HEK-293T cells infected with recombinant vaccinia virus carrying the spike gene, using ab273433.



Sandwich ELISA - Anti-SARS spike glycoprotein antibody [1A9] (ab273433)

Sandwich ELISA detection of SARS spike glycoprotein using ab273433 as the capture antibody at 5 µg/mL. An alternative antibody was used as the detection antibody at 1 µg/mL followed by a Rabbit IgG antibody (HRP) at 1/10000 to detect the primary antibody.



SARS-CoV-2 Spike was immunoprecipitated from 2µg of HEK-293T whole cell lysate with ab273433. Western blot was performed from the immunoprecipitate using ab273433. EasyBlot HRP-conjugated anti mouse IgG antibody.

Lane 1: HEK-293T lysate 2 µg (Input).

Lane 2: Control IgG IP in HEK-293T lysate.

Lane 3: ab273433 IP in HEK-293T lysate.

**Please note:** All products are "FOR RESEARCH USE ONLY. NOT FOR USE IN DIAGNOSTIC PROCEDURES"

### Our Abpromise to you: Quality guaranteed and expert technical support

- Replacement or refund for products not performing as stated on the datasheet
- Valid for 12 months from date of delivery
- Response to your inquiry within 24 hours
- We provide support in Chinese, English, French, German, Japanese and Spanish
- Extensive multi-media technical resources to help you
- We investigate all quality concerns to ensure our products perform to the highest standards

If the product does not perform as described on this datasheet, we will offer a refund or replacement. For full details of the Abpromise, please visit <https://www.abcam.cn/abpromise> or contact our technical team.

### Terms and conditions

- Guarantee only valid for products bought direct from Abcam or one of our authorized distributors