

### Anti-S1P antibody ab59870

★★★★★ [5 Abreviews](#) [1 References](#) [1 图像](#)

#### 概述

产品名称	Anti-S1P抗体
描述	兔多克隆抗体to S1P
宿主	Rabbit
特异性	We have a range of domain specific antibodies for this target. For a full list please <a href="#">see all MBTPS1 antibodies</a> . ab59870 recognizes all four forms of MBTPS1 (1052, 746, 607 and 552 amino acids in length).
经测试应用	适用于: WB
种属反应性	与反应: Human
免疫原	Synthetic peptide based on the catalytic domain of human MBTPS1. Immunizing peptide available on request - please contact a member of staff to ask for availability.
常规说明	<p>The Life Science industry has been in the grips of a reproducibility crisis for a number of years. Abcam is leading the way in addressing this with our range of recombinant monoclonal antibodies and knockout edited cell lines for gold-standard validation. Please check that this product meets your needs before purchasing.</p> <p>If you have any questions, special requirements or concerns, please send us an inquiry and/or contact our Support team ahead of purchase. Recommended alternatives for this product can be found below, along with publications, customer reviews and Q&amp;As</p>

#### 性能

形式	Liquid
存放说明	Shipped at 4°C. Store at -20°C. Stable for 12 months at -20°C.
存储溶液	<p>pH: 7.40</p> <p>Preservative: 0.05% Sodium azide</p> <p>Constituents: PBS, 50% Glycerol, 2.9% Sodium chloride</p>
纯度	Immunogen affinity purified
克隆	多克隆
同种型	IgG

#### 应用

The Abpromise guarantee

Abpromise™承诺保证使用ab59870于以下的经测试应用

“应用说明”部分 下显示的仅为推荐的起始稀释度;实际最佳的稀释度/浓度应由使用者检定。

应用	Ab评论	说明
WB	★★★★★ (2)	1/1000 - 1/5000. Predicted molecular weight: 118 kDa. 1/1,000 when using colorimetric substrates such as BCIP/NBT, and 1/5,000 for chemiluminescent substrates.

靶标

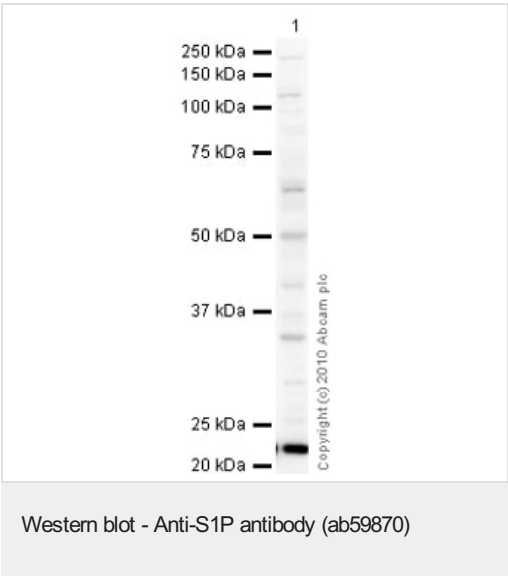
相关性

S1P (also known as MBTPS1,SKI1), was first discovered as one of two enzymes that cleave the sterol regulatory binding proteins (SREBPs), in the case of S1P at “site-1,” a hydrophillic loop extending into the lumen of the ER. The MBTPS1 domain structure contains a signal sequence followed by a propeptide domain, a catalytic domain, a transmembrane domain and a cytoplasmic domain.

细胞定位

Endoplasmic reticulum membrane; Single-pass type I membrane protein. Golgi apparatus membrane; Single-pass type I membrane protein.

图片



Anti-S1P antibody (ab59870) at 1 µg/ml + HepG2 (Human hepatocellular liver carcinoma cell line) Whole Cell Lysate at 10 µg

**Secondary**  
Goat Anti-Rabbit IgG H&L (HRP) preadsorbed ([ab97080](#)) at 1/5000 dilution

Developed using the ECL technique.

Performed under reducing conditions.

**Predicted band size:** 118 kDa

**Exposure time:** 16 minutes

The 148 kDa zymogen is processed progressively into two membrane-bound 120 and 106 kDa forms in the endoplasmic reticulum, and late into a secreted 98 kDa form. The propeptide is autocatalytically removed through an intramolecular cleavage after Leu-186. Further cleavage generates 14, 10, and 8 kDa intermediates.

**Please note:** All products are "FOR RESEARCH USE ONLY. NOT FOR USE IN DIAGNOSTIC PROCEDURES"

### **Our Abpromise to you: Quality guaranteed and expert technical support**

---

- Replacement or refund for products not performing as stated on the datasheet
- Valid for 12 months from date of delivery
- Response to your inquiry within 24 hours
  
- We provide support in Chinese, English, French, German, Japanese and Spanish
- Extensive multi-media technical resources to help you
- We investigate all quality concerns to ensure our products perform to the highest standards

If the product does not perform as described on this datasheet, we will offer a refund or replacement. For full details of the Abpromise, please visit <https://www.abcam.cn/abpromise> or contact our technical team.

### **Terms and conditions**

---

- Guarantee only valid for products bought direct from Abcam or one of our authorized distributors