


Anti-S100A4 antibody [S100A4/1481] ab218511

敲除验证

1 References 7 图像

概述	
产品名称	Anti-S100A4抗体[S100A4/1481]
描述	小鼠单克隆抗体[S100A4/1481] to S100A4
宿主	Mouse
经测试应用	适用于: Protein Array, Flow Cyt, WB, IHC-P
种属反应性	与反应: Human 预测可用于: Mouse 
免疫原	Recombinant full length protein corresponding to Human S100A4. Database link: <a href="#">P26447</a>
阳性对照	IHC-P: Human placenta tissue. WB: HeLa, A549 and A375 cell lysates. Flow Cyt: T98G cells.
常规说明	<p>The Life Science industry has been in the grips of a reproducibility crisis for a number of years. Abcam is leading the way in addressing this with our range of recombinant monoclonal antibodies and knockout edited cell lines for gold-standard validation. Please check that this product meets your needs before purchasing.</p> <p>If you have any questions, special requirements or concerns, please send us an inquiry and/or contact our Support team ahead of purchase. Recommended alternatives for this product can be found below, along with publications, customer reviews and Q&amp;As</p>
性能	
形式	Liquid
存放说明	Shipped at 4°C. Store at +4°C short term (1-2 weeks). Upon delivery aliquot. Store at -20°C long term. Avoid freeze / thaw cycle.
存储溶液	pH: 7.2 Preservative: 0.05% Sodium azide Constituents: 0.05% BSA, 99% PBS
纯度	Protein G purified
克隆	单克隆
克隆编号	S100A4/1481
同种型	IgG1

轻链类型

kappa

应用

The Abpromise guarantee

Abpromise™承诺保证使用ab218511于以下的经测试应用

“应用说明”部分 下显示的仅为推荐的起始稀释度;实际最佳的稀释度/浓度应由使用者检定。

应用	Ab评论	说明
Protein Array		Use at an assay dependent concentration.
Flow Cyt		Use a concentration of 1 - 2 µg/ml.
WB		Use a concentration of 1 - 2 µg/ml. Predicted molecular weight: 12 kDa.
IHC-P		Use a concentration of 1 - 2 µg/ml. Perform heat mediated antigen retrieval with citrate buffer pH 6 before commencing with IHC staining protocol.

靶标

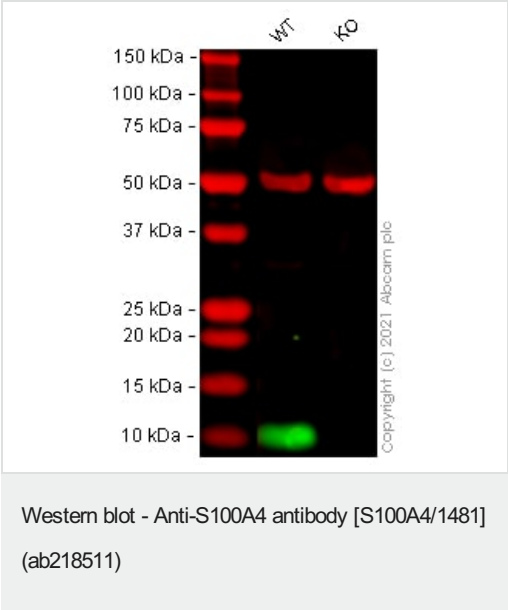
组织特异性

Ubiquitously expressed.

序列相似性

Belongs to the S-100 family.  
Contains 2 EF-hand domains.

图片



**All lanes :** Anti-S100A4 antibody [S100A4/1481] (ab218511) at 0.5 µg/ml

**Lane 1 :** Wild-type HeLa cell lysate

**Lane 2 :** S100A4 knockout HeLa cell lysate

Lysates/proteins at 20 µg per lane.

Performed under reducing conditions.

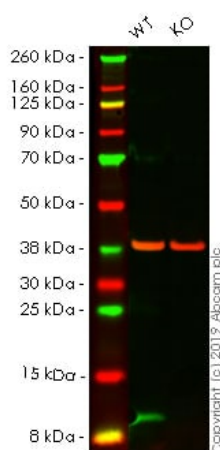
**Predicted band size:** 12 kDa

**Observed band size:** 11 kDa

**Lanes 1 - 2:** Merged signal (red and green). Green - ab218511 observed at 11 kDa. Red - loading control **ab52866** (Rabbit anti-

alpha Tubulin antibody [EP1332Y]) observed at 55 kDa.

ab218511 was shown to react with S100A4 in wild-type HeLa cells in Western blot with loss of signal observed in S100A4 knockout cell line **ab265709** (S100A4 knockout cell lysate **ab257046**). Wild-type HeLa and S100A4 knockout cell lysates were subjected to SDS-PAGE. Membranes were blocked in 3 % milk in TBS-T (0.1 % Tween<sup>®</sup>) before incubation with ab218511 and **ab52866** (Rabbit anti-alpha Tubulin antibody [EP1332Y]) overnight at 4 °C at 0.5 µg/ml and a 1 in 20000 dilution respectively. Blots were incubated with Goat anti-Mouse IgG H&L (IRDye<sup>®</sup> 800CW) preabsorbed (**ab216772**) and Goat anti-Rabbit IgG H&L (IRDye<sup>®</sup> 680RD) preabsorbed (**ab216777**) secondary antibodies at 1 in 20000 dilution for 1 h at room temperature before imaging.



Western blot - Anti-S100A4 antibody [S100A4/1481] (ab218511)

**All lanes :** Anti-S100A4 antibody [S100A4/1481] (ab218511) at 1/1000 dilution

**Lane 1 :** Wild-type HeLa cell lysate

**Lane 2 :** S100A4 knockout HeLa cell lysate

Lysates/proteins at 20 µg per lane.

Performed under reducing conditions.

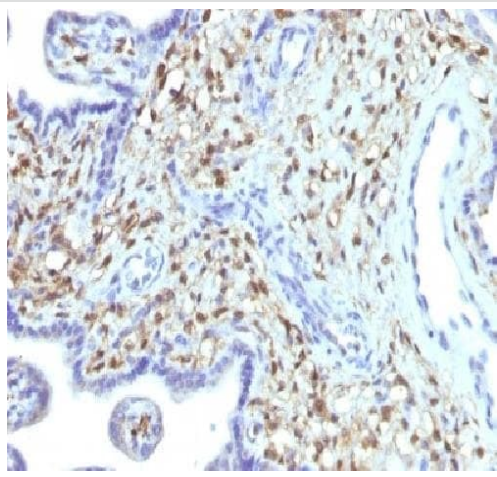
**Predicted band size:** 12 kDa

**Observed band size:** 12 kDa

**Lanes 1 - 4:** Merged signal (red and green). Green - ab218511 observed at 12 kDa. Red - loading control **ab181602** observed at 37 kDa.

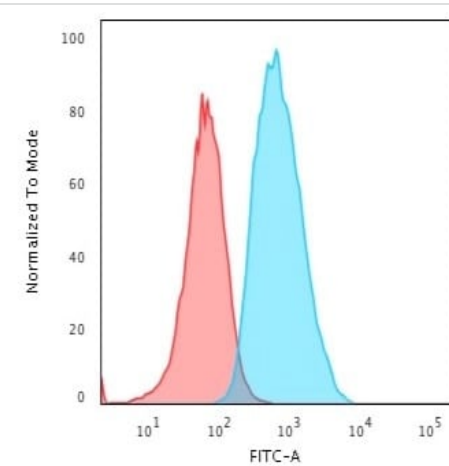
ab218511 Anti-S100A4 antibody [S100A4/1481] was shown to specifically react with S100A4 in wild-type HeLa cells. Loss of signal was observed when knockout cell line **ab261758** (knockout cell lysate **ab257045**) was used. Wild-type and S100A4 knockout samples were subjected to SDS-PAGE. ab218511 and Anti-GAPDH antibody [EPR16891] - Loading Control (**ab181602**) were incubated overnight at 4°C at 1 in 1000 dilution and 1 in 20000 dilution respectively. Blots were developed with Goat anti-Mouse IgG H&L (IRDye<sup>®</sup> 800CW) preadsorbed (**ab216772**) and Goat Anti-Rabbit IgG H&L (IRDye<sup>®</sup> 680RD) preadsorbed (**ab216777**) secondary antibodies at 1 in 20000 dilution for 1 hour at room

temperature before imaging.



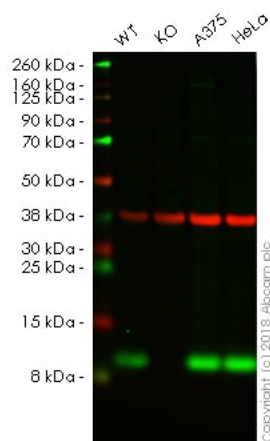
Immunohistochemical analysis of formalin-fixed paraffin-embedded human placenta tissue, labeling S100A4 using ab218511 at 1 µg/mL.

Immunohistochemistry (Formalin/PFA-fixed paraffin-embedded sections) - Anti-S100A4 antibody  
[S100A4/1481] (ab218511)



Flow Cytometric Analysis of human T98G cells using ab218511 at 1 ug/ml, followed by goat anti-Mouse IgG-CF488 (Blue); Isotype Control (Red).

Flow Cytometry - Anti-S100A4 antibody  
[S100A4/1481] (ab218511)



Western blot - Anti-S100A4 antibody [S100A4/1481] (ab218511)

**All lanes :** Anti-S100A4 antibody [S100A4/1481] (ab218511) at 1  $\mu$ g/ml

**Lane 1 :** Wild-type A549 (Human lung carcinoma cell line) whole cell lysate

**Lane 2 :** S100A4 knockout A549 (Human lung carcinoma cell line) whole cell lysate

**Lane 3 :** A-375 (Human malignant melanoma cell line) whole cell lysate

**Lane 4 :** HeLa (Human epithelial cell line from cervix adenocarcinoma) whole cell lysate

Lysates/proteins at 20  $\mu$ g per lane.

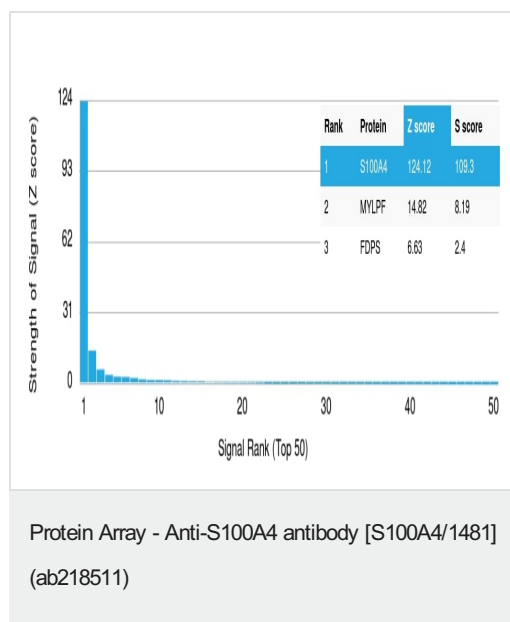
Performed under reducing conditions.

**Predicted band size:** 12 kDa

**Observed band size:** 12 kDa

**Lanes 1 -4:** Merged signal (red and green). Green - ab218511 observed at 12 kDa. Red - loading control, **ab181602**, observed at 37 kDa.

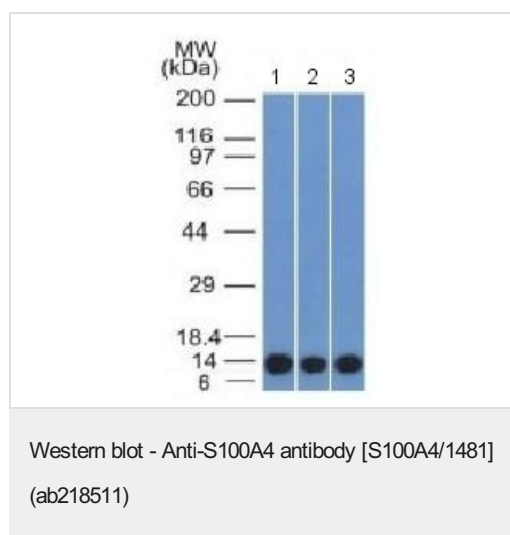
ab218511 was shown to specifically react with S100A4 in wild-type A549 cells as signal was lost in S100A4 knockout cells. Wild-type and S100A4 knockout samples were subjected to SDS-PAGE. Ab218511 and **ab181602** (Rabbit anti GAPDH loading control) were incubated overnight at 4°C at 1  $\mu$ g/ml and 1/20000 dilution respectively. Blots were developed with Goat anti-Mouse IgG H&L (IRDye® 800CW) preabsorbed **ab216772** and Goat anti-Rabbit IgG H&L (IRDye® 680RD) preabsorbed **ab216777** secondary antibodies at 1/20000 dilution for 1 hour at room temperature before imaging.



ab218511 was tested in protein array against over 19000 different full-length human proteins.

**Z- and S- Score:** The Z-score represents the strength of a signal that a monoclonal antibody (MAb) (in combination with a fluorescently-tagged anti-IgG secondary antibody) produces when binding to a particular protein on the HuProt™ array. Z-scores are described in units of standard deviations (SD's) above the mean value of all signals generated on that array. If targets on HuProt™ are arranged in descending order of the Z-score, the S-score is the difference (also in units of SD's) between the Z-score. S-score therefore represents the relative target specificity of a MAb to its intended target.

A MAb is specific to its intended target if the MAb has an S-score of at least 2.5. For example, if a MAb binds to protein X with a Z-score of 43 and to protein Y with a Z-score of 14, then the S-score for the binding of that MAb to protein X is equal to 29.



**All lanes :** Anti-S100A4 antibody [S100A4/1481] (ab218511) at 1 µg/ml

**Lane 1 :** HeLa cell lysate

**Lane 2 :** A549 cell lysate

**Lane 3 :** A375 cell lysate

**Predicted band size:** 12 kDa

**Please note:** All products are "FOR RESEARCH USE ONLY. NOT FOR USE IN DIAGNOSTIC PROCEDURES"

## Our Abpromise to you: Quality guaranteed and expert technical support

- Replacement or refund for products not performing as stated on the datasheet
- Valid for 12 months from date of delivery
- Response to your inquiry within 24 hours
- We provide support in Chinese, English, French, German, Japanese and Spanish
- Extensive multi-media technical resources to help you
- We investigate all quality concerns to ensure our products perform to the highest standards

If the product does not perform as described on this datasheet, we will offer a refund or replacement. For full details of the Abpromise, please visit <https://www.abcam.cn/abpromise> or contact our technical team.

## Terms and conditions

---

- Guarantee only valid for products bought direct from Abcam or one of our authorized distributors