

Anti-RYBP antibody [EPR13059(2)] - ChIP Grade ab185971

重组 RabMAb

★★★★★ **1 Abreviews** **6 References** **14 图像**

概述

产品名称	Anti-RYBP抗体[EPR13059(2)] - ChIP Grade
描述	兔单克隆抗体[EPR13059(2)] to RYBP - ChIP Grade
宿主	Rabbit
经测试应用	适用于: Flow Cyt (Intra), ChIP, IP, ICC/IF, IHC-P, WB
种属反应性	与反应: Mouse, Rat, Human
免疫原	Synthetic peptide. This information is proprietary to Abcam and/or its suppliers.
阳性对照	K562, SW480, HepG2 and rat PC12 cell lysates; Human placenta and Human clear carcinoma of kidney tissues; HepG2, SW480 and K562 cells IP: NIH/3T3 cell lysates Flow Cyt (intra): A431 cells
常规说明	<p>This product is a recombinant monoclonal antibody, which offers several advantages including:</p> <ul style="list-style-type: none"> - High batch-to-batch consistency and reproducibility - Improved sensitivity and specificity - Long-term security of supply - Animal-free production <p>For more information see here.</p> <p>Our RabMAb[®] technology is a patented hybridoma-based technology for making rabbit monoclonal antibodies. For details on our patents, please refer to RabMAb[®] patents.</p>

性能

形式	Liquid
存放说明	Shipped at 4°C. Store at +4°C short term (1-2 weeks). Upon delivery aliquot. Store at -20°C long term. Avoid freeze / thaw cycle.
存储溶液	<p>pH: 7.2</p> <p>Preservative: 0.01% Sodium azide</p> <p>Constituents: 59% PBS, 40% Glycerol (glycerin, glycerine), 0.05% BSA</p>
纯度	Protein A purified
克隆	单克隆
克隆编号	EPR13059(2)

同种型

IgG

应用

The Abpromise guarantee

Abpromise™承诺保证使用ab185971于以下的经测试应用

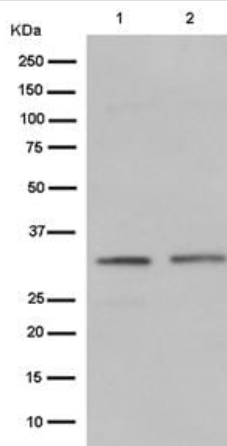
“应用说明”部分 下显示的仅为推荐的起始稀释度;实际最佳的稀释度/浓度应由使用者检定。

应用	Ab评论	说明
Flow Cyt (Intra)		1/20 - 1/40. ab172730 - Rabbit monoclonal IgG, is suitable for use as an isotype control with this antibody.
ChIP		Use at an assay dependent concentration.
IP		1/40 - 1/60.
ICC/IF	★★★★★ (1)	1/250.
IHC-P		1/50 - 1/100. Perform heat mediated antigen retrieval with citrate buffer pH 6 before commencing with IHC staining protocol.
WB		1/1000 - 1/10000. Detects a band of approximately 32 kDa (predicted molecular weight: 25 kDa).

靶标

功能	May be implicated in the regulation of the transcription as a repressor of the transcriptional activity of E4TF1. In tumor cell lines, may induce apoptosis.
组织特异性	Widely expressed with highest levels in lymphoid tissues and placenta.
序列相似性	Contains 1 RanBP2-type zinc finger.
细胞定位	Nucleus. Cytoplasm. Primarily found in the nucleus.

图片



Western blot - Anti-RYBP antibody [EPR13059(2)] - ChIP Grade (ab185971)

All lanes : Anti-RYBP antibody [EPR13059(2)] - ChIP Grade (ab185971) at 1/1000 dilution

Lane 1 : K562 cell lysate

Lane 2 : SW480 cell lysate

Lysates/proteins at 20 µg per lane.

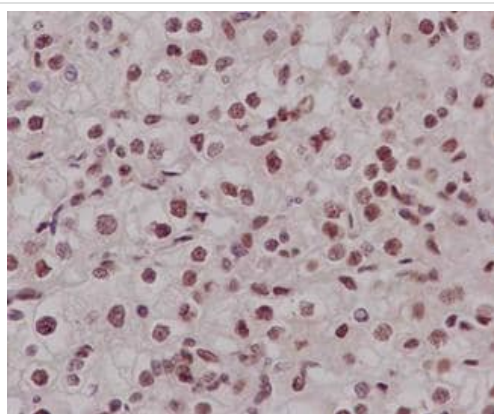
Secondary

All lanes : goat anti-rabbit IgG, (H+L), peroxidase conjugated at 1/1000 dilution

Developed using the ECL technique.

Predicted band size: 25 kDa

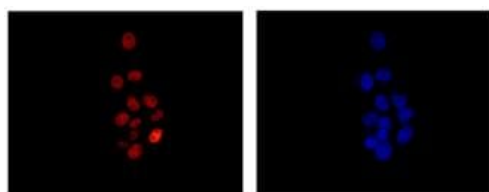
Observed band size: 32 kDa



Immunohistochemistry (Formalin/PFA-fixed paraffin-embedded sections) - Anti-RYBP antibody [EPR13059(2)] - ChIP Grade (ab185971)

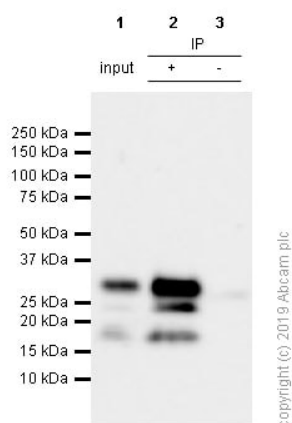
Immunohistochemical analysis of paraffin-embedded, Human clear cell carcinoma kidney tissue labeling RYBP with ab185971 at a 1/100 dilution. Counter stained with hematoxylin.

Perform heat mediated antigen retrieval with citrate buffer pH 6 before commencing with IHC staining protocol.



Immunocytochemistry/ Immunofluorescence - Anti-RYBP antibody [EPR13059(2)] - ChIP Grade (ab185971)

Immunofluorescence analysis of, paraformaldehyde-fixed, HepG2 cells labeling RYBP with ab185971 at a 1/250 dilution. As secondary antibody goat anti-rabbit IgG (Alexa Fluor®555) was used at a 1/200. In blue DAPI staining.



Immunoprecipitation - Anti-RYBP antibody
[EPR13059(2)] - ChIP Grade (ab185971)

ab185971 (purified) at 1/20 dilution (11.7 µg/mL)
immunoprecipitating RYBP in NIH/3T3 (Mouse embryonic
fibroblast) whole cell lysate 10 µg.

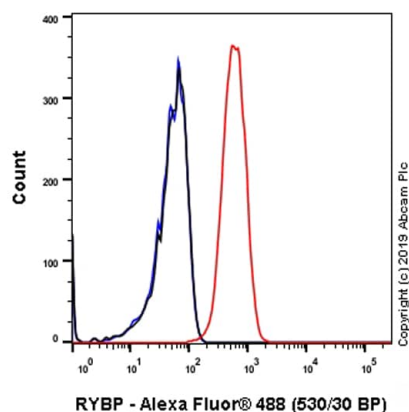
Lane 1 (input): NIH/3T3 (Mouse embryonic fibroblast) whole cell
lysate 10 µg

Lane 2 (+): ab185971 & NIH/3T3 whole cell lysate

Lane 3 (-): Rabbit monoclonal IgG (**ab172730**) instead of
ab185971 in NIH/3T3 whole cell lysate

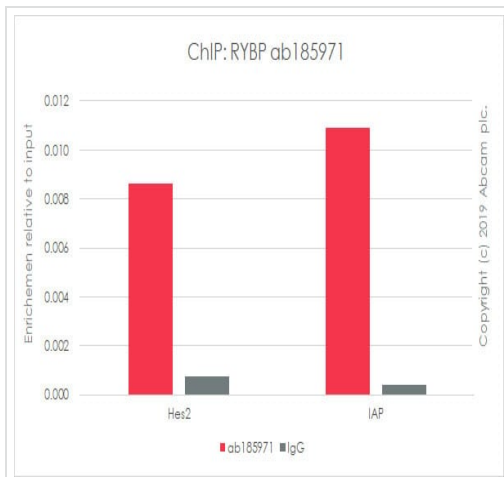
For western blotting, ab185971 at 1/500 dilution (0.468 µg/mL) and
veriBlot for IP secondary antibody (HRP) (**ab131366**) at 1/1000
dilution was used.

Blocking and diluting buffer: 5% NFDM /TBST.



Flow Cytometry (Intracellular) - Anti-RYBP antibody
[EPR13059(2)] - ChIP Grade (ab185971)

Intracellular Flow Cytometry analysis of A431 (Human epidermoid
carcinoma epithelial cell) cells labeling RYBP with purified
ab185971 at 1/20 dilution (11.7 µg/mL) (Red). Cells were fixed with
4% paraformaldehyde and permeabilised with 90% methanol. A
Goat anti rabbit IgG (Alexa Fluor® 488, **ab150077**) secondary
antibody was used at 1/2000 dilution. Isotype control - Rabbit
monoclonal IgG (**ab172730**) (black). Unlabeled control - Unlabelled
cells (blue).



ChIP - Anti-RYBP antibody [EPR13059(2)] - ChIP Grade (ab185971)

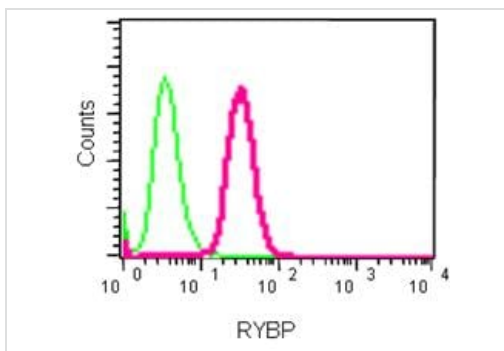
Chromatin was prepared from NIH/3T3 cells according to the Abcam Dual X-ChIP protocol*. Cells were fixed with EGS for 30 minutes, then formaldehyde for 10 minutes.

The ChIP was performed with 25 µg of chromatin, 5 µg of ab185971 (red), and 20 µl of Protein A/G sepharose beads. 5 µg of rabbit normal IgG was added to the beads control (gray). The immunoprecipitated DNA was quantified by real time PCR (Sybr green approach).

Primers and probes are located in the first kb of the transcribed region.

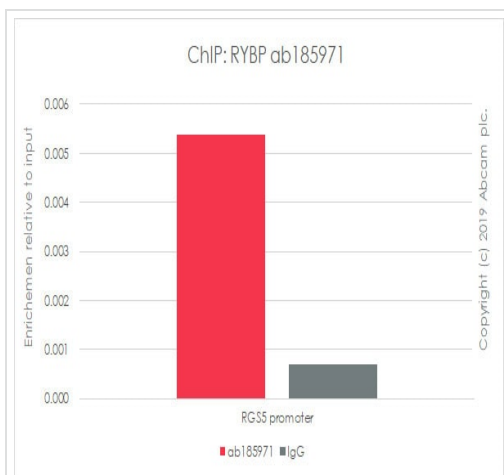
*[http://www.abcam.com/resources?](http://www.abcam.com/resources?keywords=X%20ChIP%20protocol)

keywords=X%20ChIP%20protocol



Flow Cytometry (Intracellular) - Anti-RYBP antibody [EPR13059(2)] - ChIP Grade (ab185971)

Intracellular Flow Cytometry analysis of paraformaldehyde-fixed K562 cells labeling RYBP with ab185971 at a 1/40 dilution and secondary antibody goat anti-rabbit IgG (FITC, red) at a 1/150 dilution, or negative control rabbit IgG (green).



ChIP - Anti-RYBP antibody [EPR13059(2)] - ChIP Grade (ab185971)

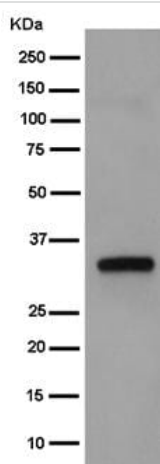
Chromatin was prepared from HEK293 cells according to the Abcam Dual X-ChIP protocol*. Cells were fixed with EGS for 30 minutes, then formaldehyde for 10 minutes.

The ChIP was performed with 25 µg of chromatin, 5 µg of ab185971 (red), and 20 µl of Protein A/G sepharose beads. 5 µg of rabbit normal IgG was added to the beads control (gray). The immunoprecipitated DNA was quantified by real time PCR (Sybr green approach).

Primers and probes are located in the first kb of the transcribed region.

*[http://www.abcam.com/resources?](http://www.abcam.com/resources?keywords=X%20ChIP%20protocol)

keywords=X%20ChIP%20protocol



Western blot - Anti-RYBP antibody [EPR13059(2)] - ChIP Grade (ab185971)

Anti-RYBP antibody [EPR13059(2)] - ChIP Grade (ab185971) at 1/10000 dilution + HepG2 cell lysate at 20 µg

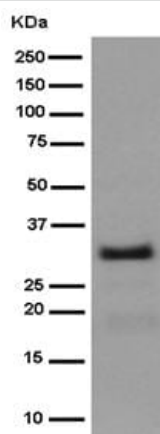
Secondary

goat anti-rabbit IgG, (H+L), peroxidase conjugated at 1/1000 dilution

Developed using the ECL technique.

Predicted band size: 25 kDa

Observed band size: 32 kDa



Western blot - Anti-RYBP antibody [EPR13059(2)] - ChIP Grade (ab185971)

Anti-RYBP antibody [EPR13059(2)] - ChIP Grade (ab185971) at 1/1000 dilution + rat PC12 cell lysate at 10 µg

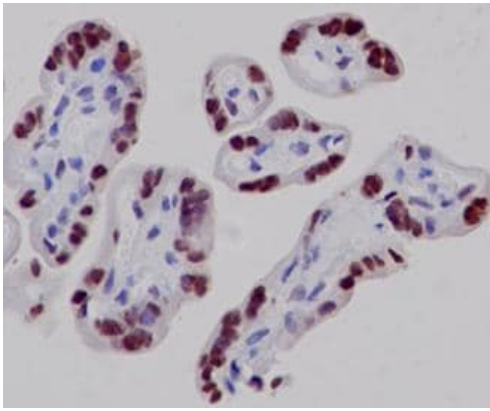
Secondary

goat anti-rabbit IgG, (H+L), peroxidase conjugated at 1/1000 dilution

Developed using the ECL technique.

Predicted band size: 25 kDa

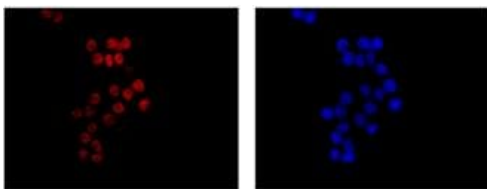
Observed band size: 32 kDa



Immunohistochemistry (Formalin/PFA-fixed paraffin-embedded sections) - Anti-RYBP antibody [EPR13059(2)] - ChIP Grade (ab185971)

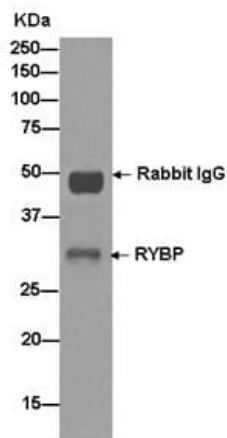
Immunohistochemical analysis of paraffin-embedded, Human placenta tissue labeling RYBP with ab185971 at a 1/100 dilution. Counter stained with hematoxylin.

Perform heat mediated antigen retrieval with citrate buffer pH 6 before commencing with IHC staining protocol.



Immunocytochemistry/ Immunofluorescence - Anti-RYBP antibody [EPR13059(2)] - ChIP Grade (ab185971)

Immunofluorescence analysis of, paraformaldehyde-fixed, SW480 cells labeling RYBP with ab185971 at a 1/250 dilution. As secondary antibody goat anti-rabbit IgG (Alexa Fluor®555) was used at a 1/200. In blue DAPI staining.



Immunoprecipitation - Anti-RYBP antibody [EPR13059(2)] - ChIP Grade (ab185971)

Western blot analysis on immunoprecipitation pellet from HepG2 cell lysate labeling RYBP with ab185971 at 1/50 dilution and goat anti-rabbit IgG, (H+L), peroxidase conjugated at a 1/1000 dilution.

Why choose a
recombinant antibody?



**Research with
confidence**
Consistent and
reproducible results



**Long-term and
scalable supply**
Recombinant
technology



**Success from the
first experiment**
Confirmed
specificity



**Ethical standards
compliant**
Animal-free
production

Anti-RYBP antibody [EPR13059(2)] - ChIP Grade
(ab185971)

Please note: All products are "FOR RESEARCH USE ONLY. NOT FOR USE IN DIAGNOSTIC PROCEDURES"

Our Abpromise to you: Quality guaranteed and expert technical support

- Replacement or refund for products not performing as stated on the datasheet
- Valid for 12 months from date of delivery
- Response to your inquiry within 24 hours
- We provide support in Chinese, English, French, German, Japanese and Spanish
- Extensive multi-media technical resources to help you
- We investigate all quality concerns to ensure our products perform to the highest standards

If the product does not perform as described on this datasheet, we will offer a refund or replacement. For full details of the Abpromise, please visit <https://www.abcam.cn/abpromise> or contact our technical team.

Terms and conditions

- Guarantee only valid for products bought direct from Abcam or one of our authorized distributors