


### Anti-RTF1 antibody [EPR13615] ab184570

重组 RabMAb

#### 6 图像

#### 概述

产品名称	Anti-RTF1抗体[EPR13615]
描述	兔单克隆抗体[EPR13615] to RTF1
宿主	Rabbit
经测试应用	适用于: ICC/IF, WB, IHC-P
种属反应性	与反应: Human 预测可用于: Mouse, Rat 
免疫原	Synthetic peptide. This information is proprietary to Abcam and/or its suppliers.
阳性对照	293, A431, HepG2 or HeLa lysate, Human papillary adenocarcinoma of thyroid or stomach tissue, HeLa cells.
常规说明	<p>This product is a recombinant monoclonal antibody, which offers several advantages including:</p> <ul style="list-style-type: none"><li>- High batch-to-batch consistency and reproducibility</li><li>- Improved sensitivity and specificity</li><li>- Long-term security of supply</li><li>- Animal-free production</li></ul> <p>For more information <a href="#">see here</a>.</p> <p>Our RabMAb<sup>®</sup> technology is a patented hybridoma-based technology for making rabbit monoclonal antibodies. For details on our patents, please refer to <a href="#">RabMAb<sup>®</sup> patents</a>.</p>

#### 性能

形式	Liquid
存放说明	Shipped at 4°C. Store at +4°C short term (1-2 weeks). Upon delivery aliquot. Store at -20°C long term. Avoid freeze / thaw cycle.
存储溶液	pH: 7.2 Preservative: 0.01% Sodium azide Constituents: 0.05% BSA, 40% Glycerol (glycerin, glycerine), 59% PBS
纯度	Protein A purified
克隆	单克隆
克隆编号	EPR13615

## 应用

## The Abpromise guarantee

**Abpromise™**承诺保证使用ab184570于以下的经测试应用

“应用说明”部分 下显示的仅为推荐的起始稀释度;实际最佳的稀释度/浓度应由使用者检定。

应用	Ab评论	说明
ICC/IF		1/100.
WB		1/1000 - 1/10000. Predicted molecular weight: 80 kDa.
IHC-P		1/50 - 1/100. Perform heat mediated antigen retrieval with Tris/EDTA buffer pH 9.0 before commencing with IHC staining protocol.

## 靶标

## 功能

Plays a role in transcription-coupled histone modification. Plays a role in regulation of transcription. Required for maximal induction of heat-shock genes (By similarity). Binds single-stranded DNA.

## 序列相似性

Contains 1 Plus3 domain.

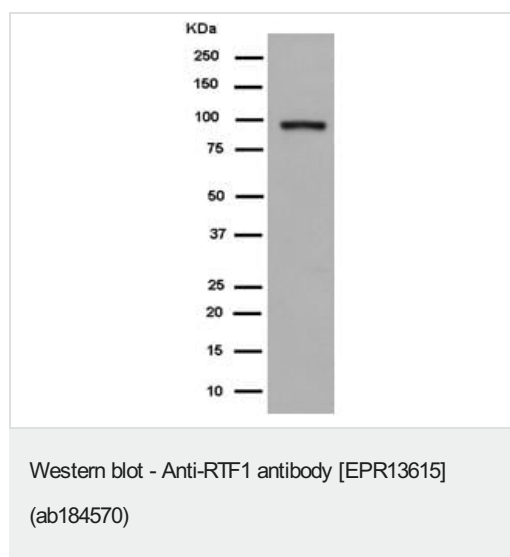
## 结构域

The Plus3 domain mediates single-stranded DNA-binding.

## 细胞定位

Nucleus > nucleoplasm.

## 图片

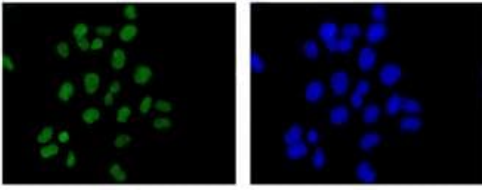


Anti-RTF1 antibody [EPR13615] (ab184570) at 1/5000 dilution + HeLa cell lysate at 20 µg

**Secondary**

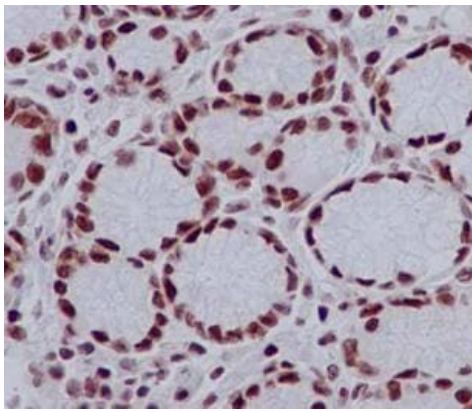
Goat Anti-Rabbit IgG, (H+L), Peroxidase conjugated at 1/1000 dilution

**Predicted band size:** 80 kDa



Immunocytochemistry/ Immunofluorescence - Anti-RTF1 antibody [EPR13615] (ab184570)

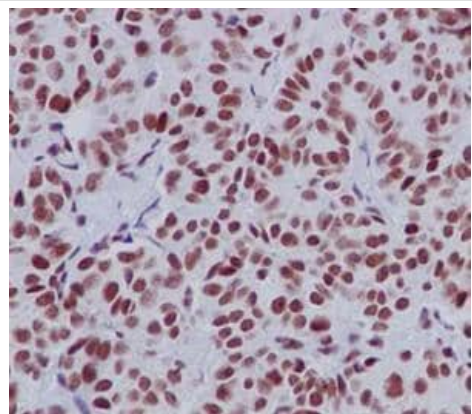
Immunofluorescence analysis of HeLa cells (fixative 4% paraformaldehyde) labeling RTF1 with ab184570 at a 1/100 dilution. Goat anti rabbit IgG (Alexa Fluor® 488) secondary used at a 1/200 dilution (left image) and counterstained with Dapi (right image).



Immunohistochemistry (Formalin/PFA-fixed paraffin-embedded sections) - Anti-RTF1 antibody [EPR13615] (ab184570)

Immunohistochemical analysis of paraffin embedded Human stomach tissue labeling RTF1 with ab184570 at a 1/100 dilution. Prediluted HRP Polymer for Rabbit IgG secondary used. Counterstained with Hematoxylin.

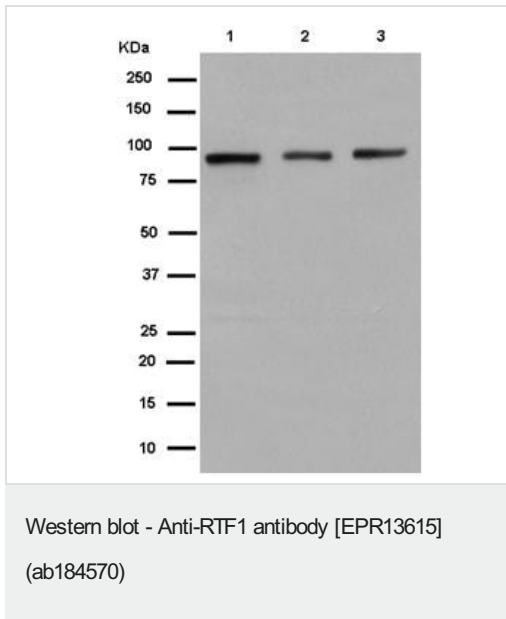
Perform heat mediated antigen retrieval with EDTA buffer pH 9 before commencing with IHC staining protocol.



Immunohistochemistry (Formalin/PFA-fixed paraffin-embedded sections) - Anti-RTF1 antibody [EPR13615] (ab184570)

Immunohistochemical analysis of paraffin embedded Human papillary adenocarcinoma of thyroid tissue labeling RTF1 with ab184570 at a 1/100 dilution. Prediluted HRP Polymer for Rabbit IgG secondary used. Counterstained with Hematoxylin.

Perform heat mediated antigen retrieval with EDTA buffer pH 9 before commencing with IHC staining protocol.



**All lanes** : Anti-RTF1 antibody [EPR13615] (ab184570) at 1/1000 dilution

**Lane 1** : 293 lysate

**Lane 2** : A431 lysate

**Lane 3** : HepG2 lysate





Lysates/proteins at 20 µg per lane.

**Secondary**

**All lanes** : Goat Anti-Rabbit IgG, (H+L), Peroxidase conjugated at 1/1000 dilution

**Predicted band size:** 80 kDa

Why choose a recombinant antibody?

 <p><b>Research with confidence</b> Consistent and reproducible results</p>	 <p><b>Long-term and scalable supply</b> Recombinant technology</p>
 <p><b>Success from the first experiment</b> Confirmed specificity</p>	 <p><b>Ethical standards compliant</b> Animal-free production</p>

Anti-RTF1 antibody [EPR13615] (ab184570)

**Please note:** All products are "FOR RESEARCH USE ONLY. NOT FOR USE IN DIAGNOSTIC PROCEDURES"

**Our Abpromise to you: Quality guaranteed and expert technical support**

- Replacement or refund for products not performing as stated on the datasheet
- Valid for 12 months from date of delivery
- Response to your inquiry within 24 hours
- We provide support in Chinese, English, French, German, Japanese and Spanish
- Extensive multi-media technical resources to help you
- We investigate all quality concerns to ensure our products perform to the highest standards

If the product does not perform as described on this datasheet, we will offer a refund or replacement. For full details of the Abpromise, please visit <https://www.abcam.cn/abpromise> or contact our technical team.

## **Terms and conditions**

---

- Guarantee only valid for products bought direct from Abcam or one of our authorized distributors