

Anti-RPIA/PRI antibody ab229967

3 图像

概述

产品名称	Anti-RPIA/PRI抗体
描述	兔多克隆抗体to RPIA/PRI
宿主	Rabbit
经测试应用	适用于: WB, IHC-P
种属反应性	与反应: Mouse, Human 预测可用于: Cow, Pig 
免疫原	Recombinant fragment corresponding to Human RPIA/PRI aa 50 to the C-terminus. Database link: P49247 <div style="text-align: right;">  Run BLAST with  Run BLAST with </div>
阳性对照	WB: Mouse kidney lysate. IHC-P: Human placenta and gastric cancer tissues.
常规说明	<p>The Life Science industry has been in the grips of a reproducibility crisis for a number of years. Abcam is leading the way in addressing this with our range of recombinant monoclonal antibodies and knockout edited cell lines for gold-standard validation. Please check that this product meets your needs before purchasing.</p> <p>If you have any questions, special requirements or concerns, please send us an inquiry and/or contact our Support team ahead of purchase. Recommended alternatives for this product can be found below, along with publications, customer reviews and Q&As</p>

性能

形式	Liquid
存放说明	Shipped at 4°C. Store at +4°C short term (1-2 weeks). Upon delivery aliquot. Store at -20°C long term. Avoid freeze / thaw cycle.
存储溶液	pH: 7.30 Preservative: 0.02% Sodium azide Constituents: PBS, 50% Glycerol (glycerin, glycerine)
纯度	Immunogen affinity purified
克隆	多克隆
同种型	IgG

应用

The Abpromise guarantee

Abpromise™ 承诺保证使用 ab229967 于以下的经测试应用

“应用说明”部分 下显示的仅为推荐的起始稀释度;实际最佳的稀释度/浓度应由使用者检定。

应用	Ab评论	说明
WB		1/1000 - 1/5000. Detects a band of approximately 33 kDa (predicted molecular weight: 33 kDa).
IHC-P		1/20 - 1/200.

靶标

通路

Carbohydrate degradation; pentose phosphate pathway; D-ribose 5-phosphate from D-ribulose 5-phosphate (non-oxidative stage): step 1/1.

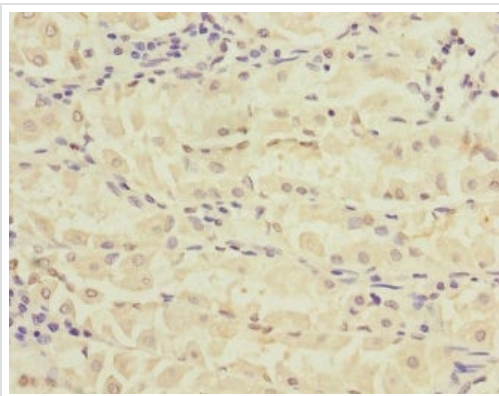
疾病相关

Defects in RPIA are the cause of ribose 5-phosphate isomerase deficiency (RPID) [MIM:608611]. A patient has been described with a deficiency of ribose 5-phosphate isomerase who presented with leukoencephalopathy and peripheral neuropathy. Proton magnetic resonance spectroscopy of the brain revealed a highly elevated level of the polyols ribitol and D-arabitol, which were subsequently also found in high concentrations in body fluids. Deficient activity of RPIA, one of the pentose phosphate pathway enzymes, has been demonstrated in fibroblasts.

序列相似性

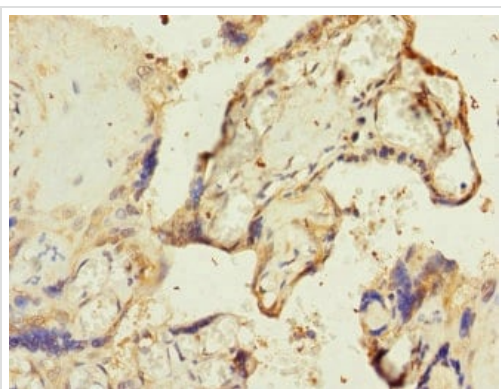
Belongs to the ribose 5-phosphate isomerase family.

图片



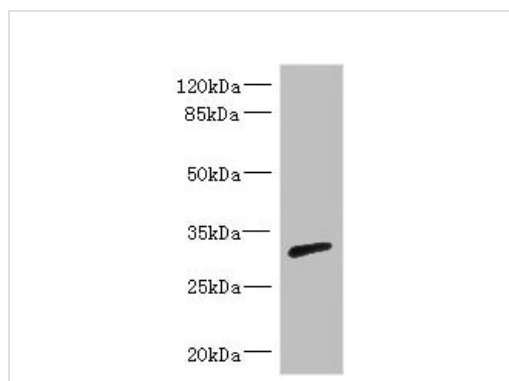
Paraffin-embedded human gastric cancer tissue stained for RPIA/PRI using ab229967 at 1/100 dilution in immunohistochemical analysis.

Immunohistochemistry (Formalin/PFA-fixed paraffin-embedded sections) - Anti-RPIA/PRI antibody (ab229967)



Paraffin-embedded human placenta tissue stained for RPIA/PRI using ab229967 at 1/100 dilution in immunohistochemical analysis.

Immunohistochemistry (Formalin/PFA-fixed paraffin-embedded sections) - Anti-RPIA/PRI antibody (ab229967)



Anti-RPIA/PRI antibody (ab229967) at 1/1000 dilution + Mouse kidney tissue

Secondary

Goat polyclonal to rabbit IgG at 1/10000 dilution

Predicted band size: 33 kDa

Observed band size: 33 kDa

Western blot - Anti-RPIA/PRI antibody (ab229967)

Please note: All products are "FOR RESEARCH USE ONLY. NOT FOR USE IN DIAGNOSTIC PROCEDURES"

Our Abpromise to you: Quality guaranteed and expert technical support

- Replacement or refund for products not performing as stated on the datasheet
- Valid for 12 months from date of delivery
- Response to your inquiry within 24 hours
- We provide support in Chinese, English, French, German, Japanese and Spanish
- Extensive multi-media technical resources to help you
- We investigate all quality concerns to ensure our products perform to the highest standards

If the product does not perform as described on this datasheet, we will offer a refund or replacement. For full details of the Abpromise, please visit <https://www.abcam.cn/abpromise> or contact our technical team.

Terms and conditions

- Guarantee only valid for products bought direct from Abcam or one of our authorized distributors