

Anti-RPA32/RPA2 antibody [EPR2876(2)] ab109084

重组 RabMAb

★★★★★ **1 Abreviews** **2 References** **9 图像**

概述

产品名称	Anti-RPA32/RPA2抗体[EPR2876(2)]
描述	兔单克隆抗体[EPR2876(2)] to RPA32/RPA2
宿主	Rabbit
经测试应用	适用于: Flow Cyt (Intra), ChIC/CUT&RUN-seq, WB, IHC-P, ICC/IF 不适用于: IP
种属反应性	与反应: Rat, Human
免疫原	Synthetic peptide. This information is proprietary to Abcam and/or its suppliers.
阳性对照	WB: HeLa, HUVEC, HepG2, and MCF7 cell lysates. IHC-P: Human colon and Human ovary carcinoma tissues. ICC/IF: C6 and HeLa cells. Flow Cyt (intra): C6 and HeLa cells. ChIC/CUT&RUN-Seq: HeLa cells.
常规说明	<p>This product is a recombinant monoclonal antibody, which offers several advantages including:</p> <ul style="list-style-type: none"> - High batch-to-batch consistency and reproducibility - Improved sensitivity and specificity - Long-term security of supply - Animal-free production <p>For more information see here.</p> <p>Our RabMAb[®] technology is a patented hybridoma-based technology for making rabbit monoclonal antibodies. For details on our patents, please refer to RabMAb[®] patents.</p> <p>Mouse: We have preliminary internal testing data to indicate this antibody may not react with this species. Please contact us for more information.</p>

性能

形式	Liquid
存放说明	Shipped at 4°C. Store at -20°C. Stable for 12 months at -20°C.
存储溶液	<p>pH: 7.20</p> <p>Preservative: 0.05% Sodium azide</p> <p>Constituents: 0.1% BSA, 40% Glycerol (glycerin, glycerine), 9.85% Tris glycine, 50% Tissue culture supernatant</p>
纯度	Tissue culture supernatant

克隆	单克隆
克隆编号	EPR2876(2)
同种型	IgG

应用

The Abpromise guarantee Abpromise™承诺保证使用ab109084于以下的经测试应用

“应用说明”部分下显示的仅为推荐的起始稀释度;实际最佳的稀释度/浓度应由使用者检定。

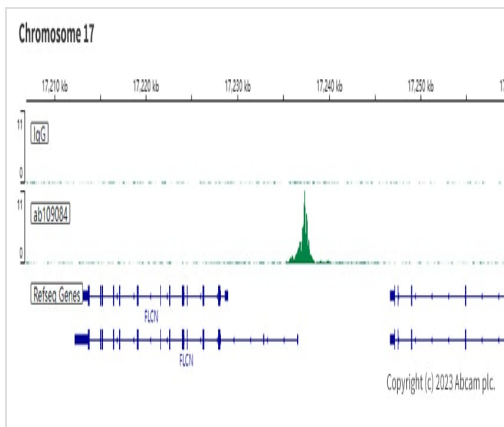
应用	Ab评论	说明
Flow Cyt (Intra)		Use at an assay dependent concentration.
ChIC/CUT&RUN-seq		Use at an assay dependent concentration. 5µg
WB		1/1000 - 1/10000. Predicted molecular weight: 29 kDa.
IHC-P		1/250 - 1/500. Perform heat mediated antigen retrieval with citrate buffer pH 6 before commencing with IHC staining protocol. Antigen retrieval is recommended.
ICC/IF	★★★★☆ (1)	Use at an assay dependent concentration.

应用说明 Is unsuitable for IP.

靶标

功能	<p>Required for DNA recombination, repair and replication. The activity of RP-A is mediated by single-stranded DNA binding and protein interactions.</p> <p>Functions as component of the alternative replication protein A complex (aRPA). aRPA binds single-stranded DNA and probably plays a role in DNA repair; it does not support chromosomal DNA replication and cell cycle progression through S-phase. In vitro, aRPA cannot promote efficient priming by DNA polymerase alpha but supports DNA polymerase delta synthesis in the presence of PCNA and replication factor C (RFC), the dual incision/excision reaction of nucleotide excision repair and RAD51-dependent strand exchange.</p>
翻译后修饰	<p>Phosphorylated in a cell-cycle-dependent manner (from the S phase until mitosis).</p> <p>Phosphorylated by ATR upon DNA damage, which promotes its translocation to nuclear foci. Can be phosphorylated in vitro by PRKDC/DNA-PK in the presence of Ku and DNA, and by CDK1.</p>
细胞定位	<p>Nucleus. Nucleus > PML body. Also present in PML nuclear bodies. Redistributes to discrete nuclear foci upon DNA damage.</p>

图片

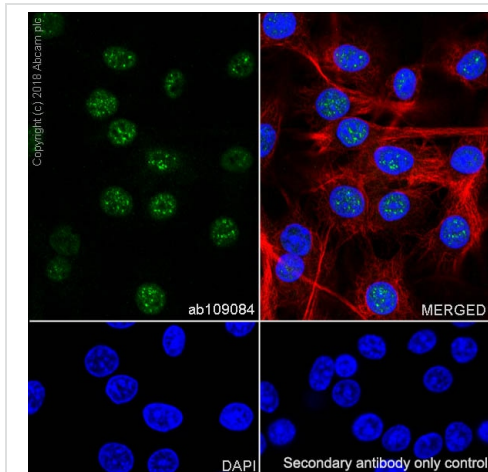


ChIC/CUT&RUN sequencing - Anti-RPA32/RPA2 antibody [EPR2876(2)] (ab109084)

ChIC/CUT&RUN was performed using a pAG-MNase at a final concentration of 700 ng/mL, 2.5×10^5 HeLa (Human cervix adenocarcinoma epithelial cell line) cells and 5 µg of ab109084 [EPR2876(2)]. The resulting DNA was sequenced on the Illumina NovaSeq 6000 to a depth of 10 million reads. The negative IgG control **ab172730** is also shown.

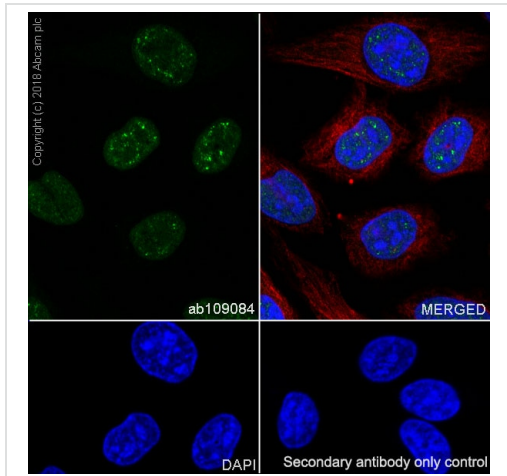
Additional screenshots of mapped reads can be downloaded [here](#).

The University of Geneva owns patents relevant to ChIC (Chromatin Immuno-Cleavage) methods.



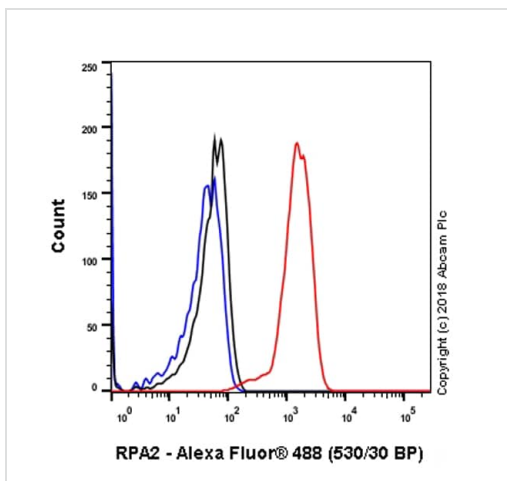
Immunocytochemistry/ Immunofluorescence - Anti-RPA32/RPA2 antibody [EPR2876(2)] (ab109084)

Immunocytochemistry/ Immunofluorescence analysis of C6 (rat glial tumor glial cell) cells labeling RPA32/RPA2 with purified ab109084 at 1:50 (9.34 µg/ml). Cells were fixed in 100% Methanol and permeabilized with None. Cells were counterstained with Ab195889 Anti-alpha Tubulin antibody [DM1A] - Microtubule Marker (Alexa Fluor® 594) 1:200 (2.5 µg/ml). Goat anti rabbit IgG (Alexa Fluor® 488, **ab150077**) was used as the secondary antibody at 1:1000 (2 µg/ml) dilution. DAPI nuclear counterstain. PBS instead of the primary antibody was used as the secondary antibody only control.



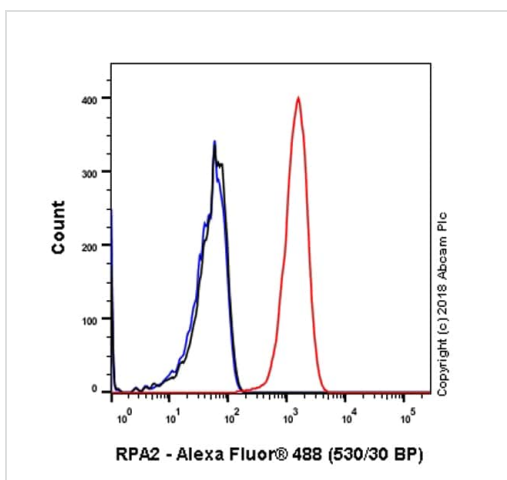
Immunocytochemistry/ Immunofluorescence - Anti-RPA32/RPA2 antibody [EPR2876(2)] (ab109084)

Immunocytochemistry/ Immunofluorescence analysis of HeLa (human cervix adenocarcinoma epithelial cell) cells labeling RPA32/RPA2 with purified ab109084 at 1:50 (9.34 µg/ml). Cells were fixed in 100% Methanol and permeabilized with None. Cells were counterstained with Ab195889 Anti-alpha Tubulin antibody [DM1A] - Microtubule Marker (Alexa Fluor® 594) 1:200 (2.5 µg/ml). Goat anti rabbit IgG (Alexa Fluor® 488, **ab150077**) was used as the secondary antibody at 1:1000 (2 µg/ml) dilution. DAPI nuclear counterstain. PBS instead of the primary antibody was used as the secondary antibody only control.



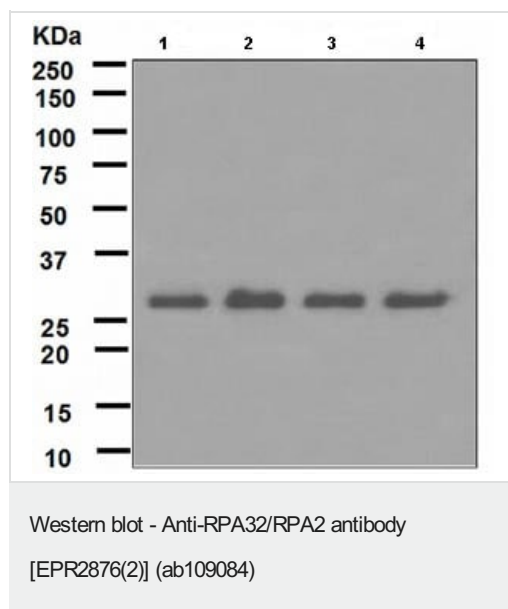
Flow Cytometry (Intracellular) - Anti-RPA32/RPA2 antibody [EPR2876(2)] (ab109084)

Intracellular Flow Cytometry analysis of C6 (rat glial tumor glial cell) cells labeling RPA32/RPA2 with purified ab109084 at 1/460 dilution (1.01 µg/ml) - Red. Cells were fixed with 4% paraformaldehyde . A Goat anti rabbit IgG (Alexa Fluor® 488, **ab150077**) secondary antibody was used at 1/2000 dilution. Isotype control - Rabbit monoclonal IgG (**ab172730**) - Black. Unlabeled control - Blue. Untreated cells - Green



Flow Cytometry (Intracellular) - Anti-RPA32/RPA2 antibody [EPR2876(2)] (ab109084)

Intracellular Flow Cytometry analysis of HeLa (human cervix adenocarcinoma epithelial cell) cells labeling RPA32/RPA2 with purified ab109084 at 1/460 dilution (1.01 µg/ml) - Red. Cells were fixed with 4% paraformaldehyde . A Goat anti rabbit IgG (Alexa Fluor® 488, **ab150077**) secondary antibody was used at 1/2000 dilution. Isotype control - Rabbit monoclonal IgG (**ab172730**) - Black. Unlabeled control - Blue. Untreated cells - Green



All lanes : Anti-RPA32/RPA2 antibody [EPR2876(2)] (ab109084)
at 1/1000 dilution

Lane 1 : HeLa cell lysate

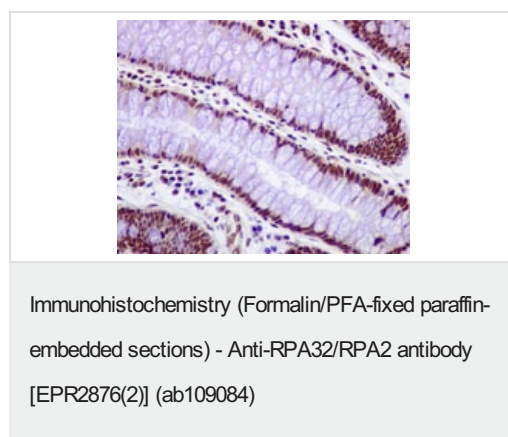
Lane 2 : HUVEC cell lysate

Lane 3 : HepG2 cell lysate

Lane 4 : MCF7 cell lysate

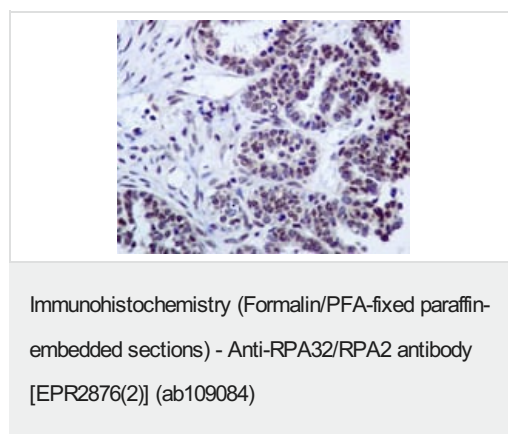
Lysates/proteins at 10 µg per lane.

Predicted band size: 29 kDa



ab109084 at 1/250 dilution staining RPA32/RPA2 in Human colon
by Immunohistochemistry, Paraffin-embedded tissue.

Perform heat mediated antigen retrieval with citrate buffer pH 6
before commencing with IHC staining protocol.



ab109084 at 1/250 dilution staining RPA32/RPA2 in Human ovary
carcinoma by Immunohistochemistry, Paraffin-embedded tissue.

Perform heat mediated antigen retrieval with citrate buffer pH 6
before commencing with IHC staining protocol.

Why choose a recombinant antibody?



Research with confidence
Consistent and reproducible results



Long-term and scalable supply
Recombinant technology



Success from the first experiment
Confirmed specificity



Ethical standards compliant
Animal-free production

Anti-RPA32/RPA2 antibody [EPR2876(2)]
(ab109084)

Please note: All products are "FOR RESEARCH USE ONLY. NOT FOR USE IN DIAGNOSTIC PROCEDURES"

Our Abpromise to you: Quality guaranteed and expert technical support

- Replacement or refund for products not performing as stated on the datasheet
- Valid for 12 months from date of delivery
- Response to your inquiry within 24 hours
- We provide support in Chinese, English, French, German, Japanese and Spanish
- Extensive multi-media technical resources to help you
- We investigate all quality concerns to ensure our products perform to the highest standards

If the product does not perform as described on this datasheet, we will offer a refund or replacement. For full details of the Abpromise, please visit <https://www.abcam.cn/abpromise> or contact our technical team.

Terms and conditions

- Guarantee only valid for products bought direct from Abcam or one of our authorized distributors