

Anti-ROS1 antibody [EPMGHR2] ab189925

重组 RabMAb

★★★★★ **1 Abreviews** **2 References** **4 图像**

概述

产品名称	Anti-ROS1抗体[EPMGHR2]
描述	兔单克隆抗体[EPMGHR2] to ROS1
宿主	Rabbit
经测试应用	适用于: IHC-P, WB
种属反应性	与反应: Human
免疫原	Synthetic peptide. This information is proprietary to Abcam and/or its suppliers.
阳性对照	IHC-P: Human lung carcinoma tissue. WB: U-118 MG whole cell lysate.
常规说明	<p>This product is a recombinant monoclonal antibody, which offers several advantages including:</p> <ul style="list-style-type: none"> - High batch-to-batch consistency and reproducibility - Improved sensitivity and specificity - Long-term security of supply - Animal-free production <p>For more information see here.</p> <p>Our RabMAb[®] technology is a patented hybridoma-based technology for making rabbit monoclonal antibodies. For details on our patents, please refer to RabMAb[®] patents.</p>

性能

形式	Liquid
存放说明	Shipped at 4°C. Store at +4°C short term (1-2 weeks). Upon delivery aliquot. Store at -20°C long term. Avoid freeze / thaw cycle.
存储溶液	<p>pH: 7.2</p> <p>Preservative: 0.01% Sodium azide</p> <p>Constituents: 40% Glycerol (glycerin, glycerine), 0.05% BSA, PBS</p>
纯度	Protein A purified
克隆	单克隆
克隆编号	EPMGHR2
同种型	IgG

应用

The Abpromise guarantee

Abpromise™承诺保证使用ab189925于以下的经测试应用

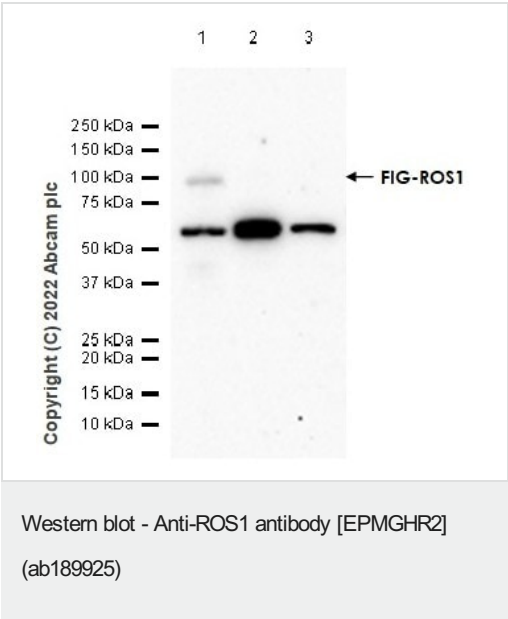
“应用说明”部分 下显示的仅为推荐的起始稀释度;实际最佳的稀释度/浓度应由使用者检定。

应用	Ab评论	说明
IHC-P	★★★★★ (1)	1/300. Perform heat mediated antigen retrieval with Tris/EDTA buffer pH 9.0 before commencing with IHC staining protocol. For unpurified use at 1/100-1/250. See <u>IHC antigen retrieval protocols</u>.
WB		1/1000. Predicted molecular weight: 264 kDa.

靶标

功能	This is probably a cell growth or differentiation factor receptor with a tyrosine-protein kinase activity.
组织特异性	Expressed in brain. Expression is increased in primary gliomas.
疾病相关	Note=A chromosomal aberration involving ROS1 is found in a glioblastoma multiforme sample. An intra-chromosomal deletion del(6)(q21q21) is responsible for the formation of GOPC-ROS1 chimeric protein which has a constitutive receptor tyrosine kinase activity.
序列相似性	Belongs to the protein kinase superfamily. Tyr protein kinase family. Insulin receptor subfamily. Contains 9 fibronectin type-III domains. Contains 1 protein kinase domain.
细胞定位	Membrane.

图片



All lanes : Anti-ROS1 antibody [EPMGHR2] (ab189925) at 1/1000 dilution

Lane 1 : U-118 MG (Human brain glioblastoma) whole cell lysate
Lane 2 : Saos-2 (Human osteosarcoma epithelial) whole cell lysate
Lane 3 : SW1353 (Human chondrosarcoma fibroblast) whole cell lysate

Lysates/proteins at 20 µg per lane.

Secondary

All lanes : Goat Anti-Rabbit IgG H&L (HRP) ([ab97051](#)) at 1/20000 dilution

Predicted band size: 264 kDa
Observed band size: 100 kDa

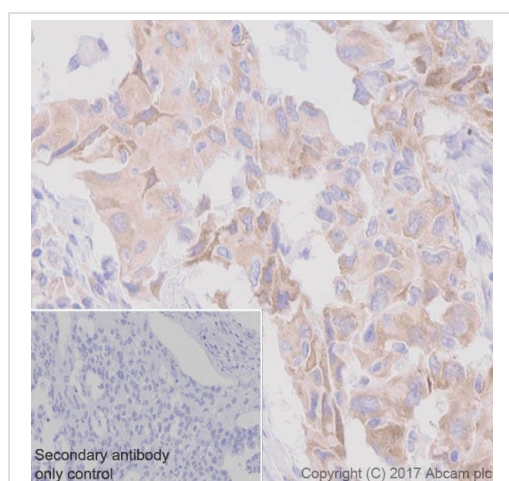
Exposure time: 180 seconds

Blocking buffer and concentration : 5% NFDM/TBST

Diluting buffer and concentration : 5% NFDM /TBST

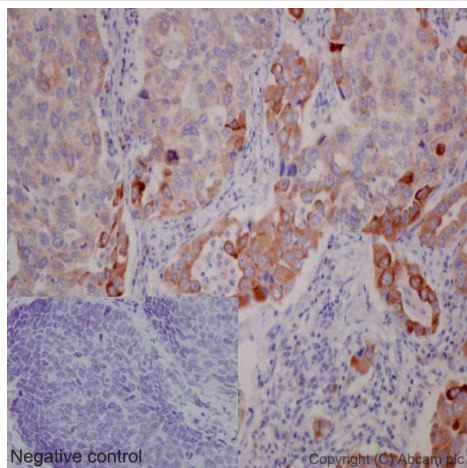
We advise using U-118MG (FIG-ROS1 fusion) or HCC78 (SLC34A2-ROS1 fusion) as a positive cell line by WB. We have been unable to identify a positive control cell line for endogenous full-length ROS1.

The identity of the lower MW band at approximately 60kDa is unknown.



Immunohistochemistry (Formalin/PFA-fixed paraffin-embedded sections) analysis of human lung carcinoma tissue sections labeling ROS1 with Purified ab189925 at 1:300 dilution (5.23 µg/ml). Heat mediated antigen retrieval was performed using EDTA Buffer, pH9.0. Tissue was counterstained with hematoxylin. ImmunoHistoProbe one step HRP Polymer (ready to use) secondary antibody was used at 1:0 dilution. PBS instead of the primary antibody was used as the negative control.

Immunohistochemistry (Formalin/PFA-fixed paraffin-embedded sections) - Anti-ROS1 antibody [EPMGHR2] (ab189925)



Immunohistochemical analysis of paraffin-embedded Human lung carcinoma tissue labeling ROS1 with unpurified ab189925 at 1/250 dilution followed by prediluted HRP Polymer for Rabbit IgG. Counter stained with hematoxylin. (Inset: negative control).

Perform heat mediated antigen retrieval with Tris/EDTA buffer pH 9.0 before commencing with IHC staining protocol.

Immunohistochemistry (Formalin/PFA-fixed paraffin-embedded sections) - Anti-ROS1 antibody
[EPMGHR2] (ab189925)

Why choose a recombinant antibody?



Research with confidence
Consistent and reproducible results



Long-term and scalable supply
Recombinant technology



Success from the first experiment
Confirmed specificity



Ethical standards compliant
Animal-free production

Anti-ROS1 antibody [EPMGHR2] (ab189925)

Please note: All products are "FOR RESEARCH USE ONLY. NOT FOR USE IN DIAGNOSTIC PROCEDURES"

Our Abpromise to you: Quality guaranteed and expert technical support

- Replacement or refund for products not performing as stated on the datasheet
- Valid for 12 months from date of delivery
- Response to your inquiry within 24 hours
- We provide support in Chinese, English, French, German, Japanese and Spanish
- Extensive multi-media technical resources to help you
- We investigate all quality concerns to ensure our products perform to the highest standards

If the product does not perform as described on this datasheet, we will offer a refund or replacement. For full details of the Abpromise, please visit <https://www.abcam.cn/abpromise> or contact our technical team.

Terms and conditions

- Guarantee only valid for products bought direct from Abcam or one of our authorized distributors